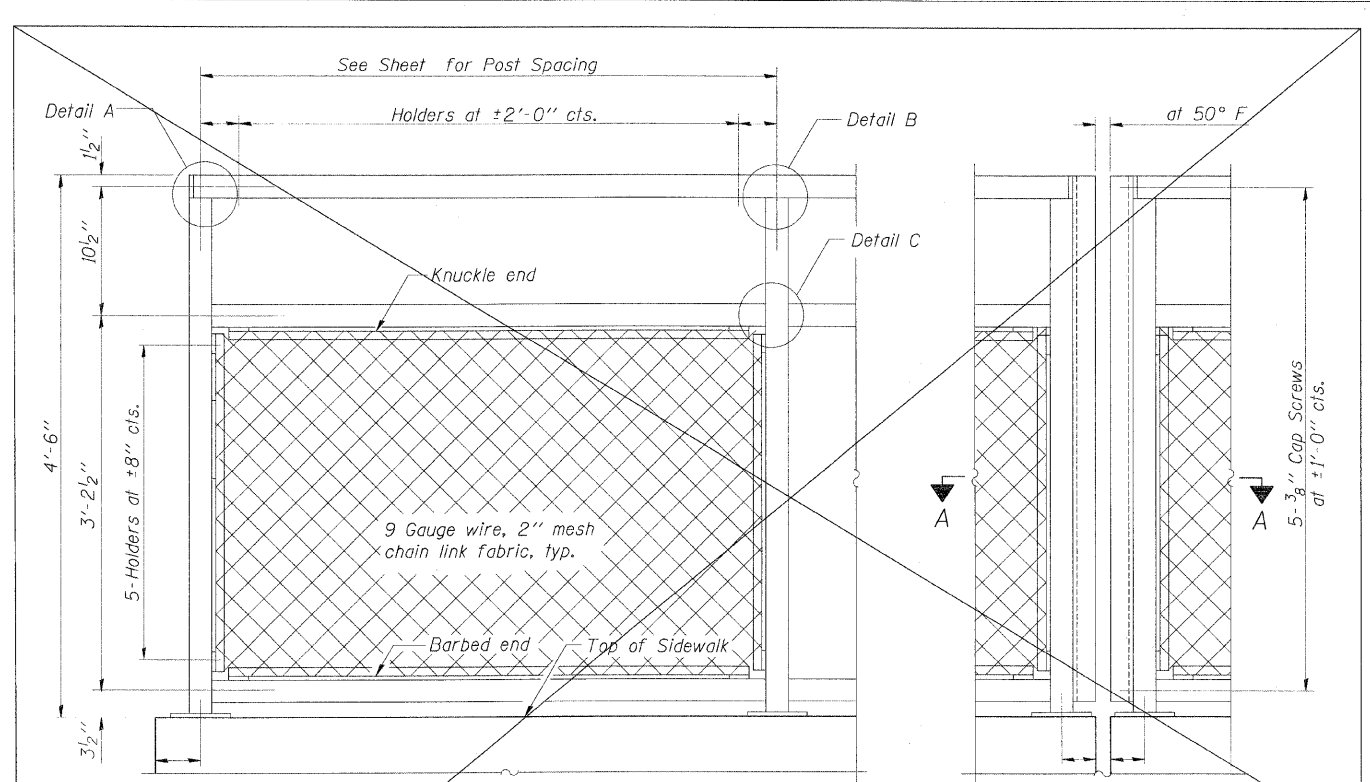
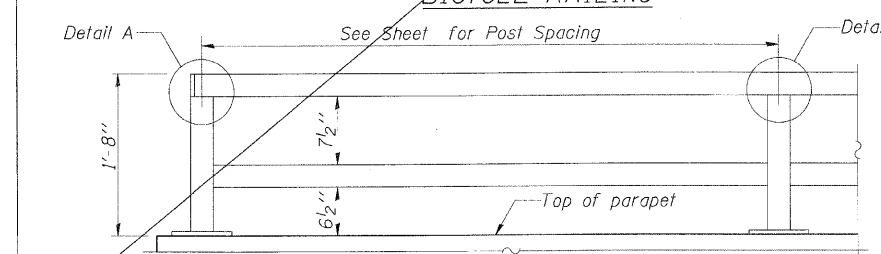


NOTE:
All steel rail elements shall be galvanized according to Article 509.05 of the Standard Specifications.

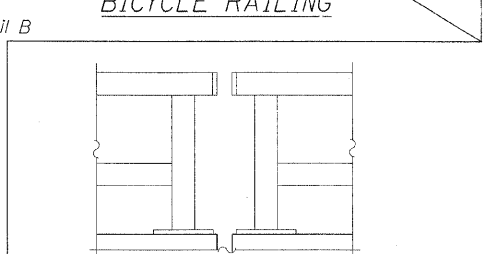


BICYCLE RAILING

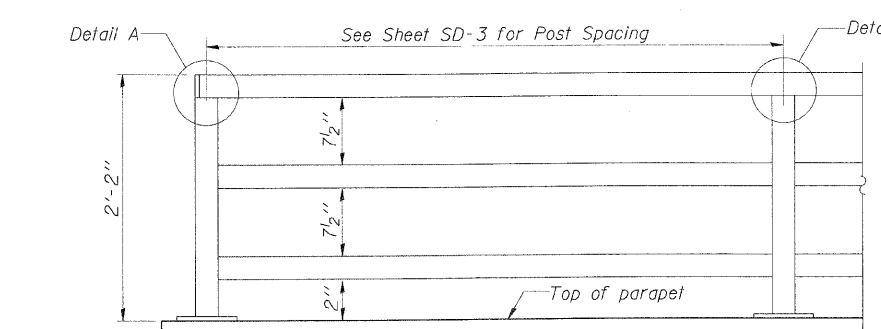
BICYCLE RAILING



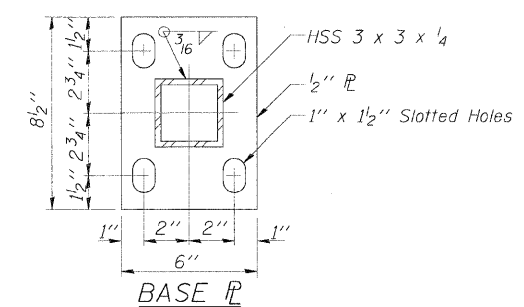
PARAPET RAILING ELEVATION
(Inside Face of Two Element Rail)



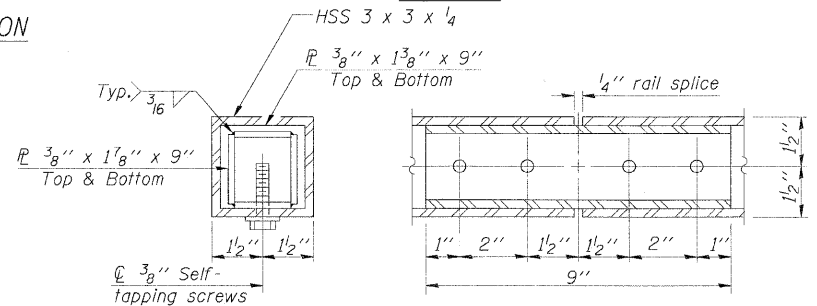
PARAPET RAILING ELEVATION AT EXPANSION JOINT
(Two Element Rail Shown-Three Element Rail Similar)



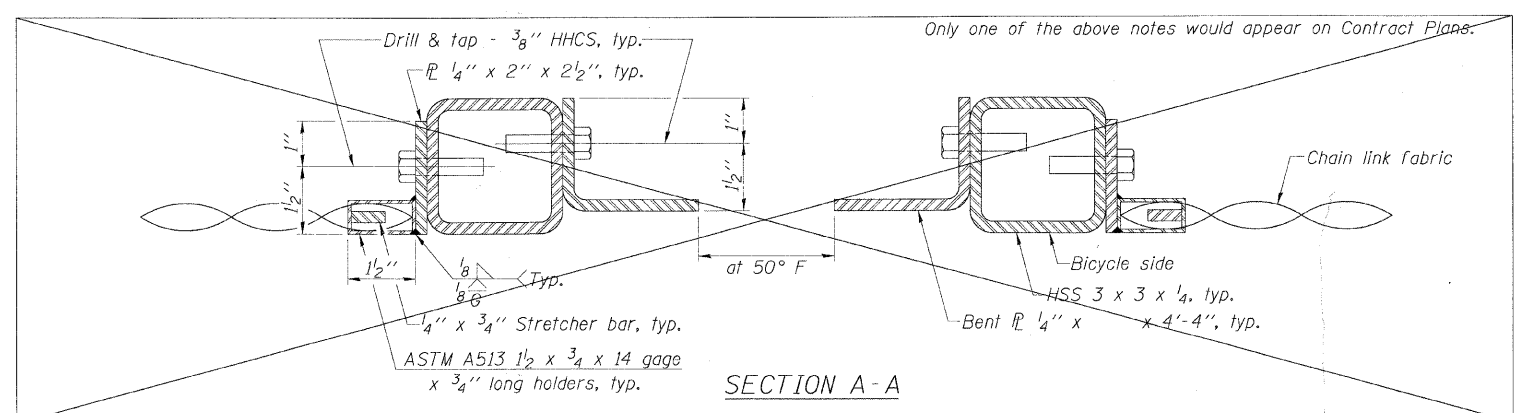
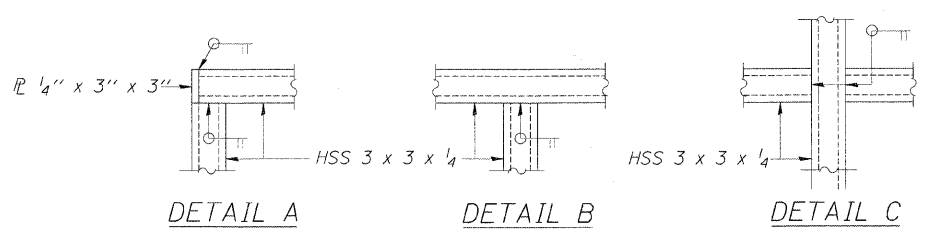
PARAPET RAILING ELEVATION
(Inside Face of Three Element Rail)



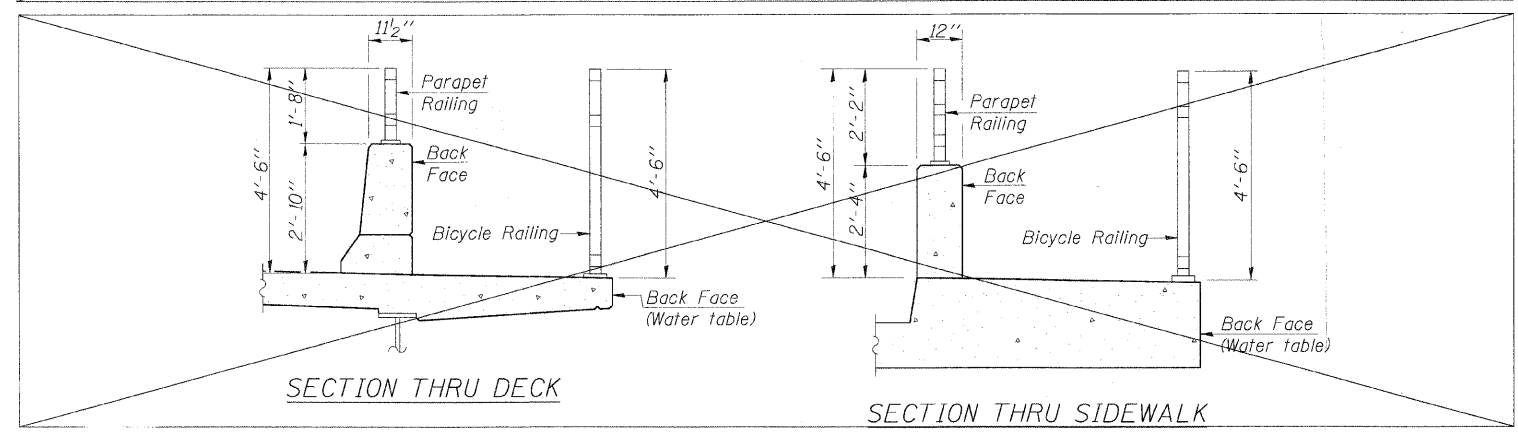
BASE PLATE



RAIL SPLICE

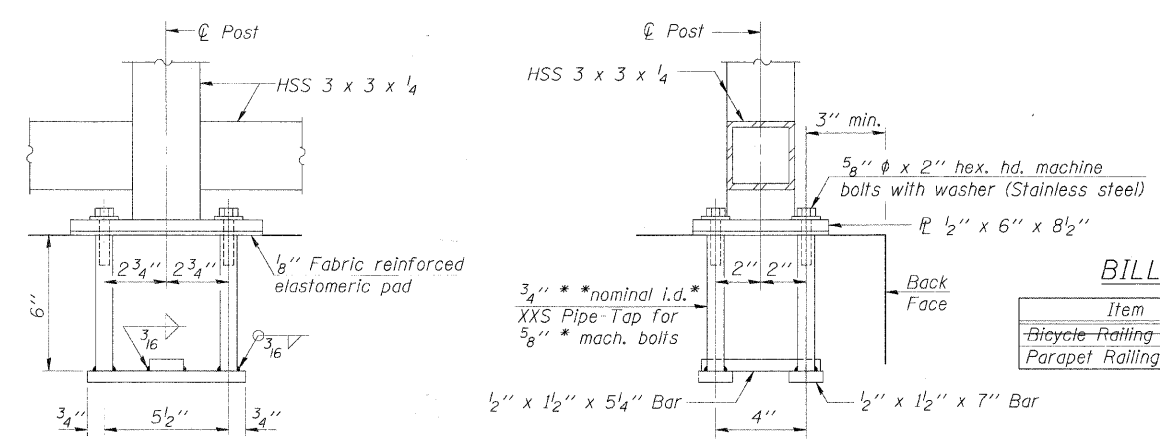


SECTION A-A



SECTION THRU DECK

SECTION THRU SIDEWALK



ANCHOR BOLT DETAILS

In lieu of the cast-in-place anchor device shown, the Contractor has the option of drilling and setting 5/8" anchor rods according to Article 509.06 of the Standard Specifications. Embedment shall be according to the manufacturer's specifications.

BILL OF MATERIAL

Item	Unit	Quantity
Bicycle Railing	Foot	
Parapet Railing	Foot	220

SHT. SD-4

REVISIONS	
NAME	DATE

MCHENRY COUNTY DIVISION OF TRANSPORTATION
WALKUP ROAD F.A.U. 0085
SECTION 00-00246-01-FP
STATION 109+80.00 TO 112+00.00
RETAINING WALL

PARAPET RAILING DETAILS

SCALE: DATE: 08/17/09 DRAWN BY: TCG CHECKED BY: MJK



TENG & ASSOCIATES, INC.
ENGINEERS/ARCHITECTS/PLANNERS
205 N. MICHIGAN AVE., CHICAGO, IL 60601
TELEPHONE: 312/616-0000

STANKIRU
T:\DOCUMENT\1810003\STRUCT\ADGN.VR000_60.DGN
8-27-2009, 4:51:50