

|               |               |      |
|---------------|---------------|------|
| PLAN          | SURVEYED      | DATE |
|               | PLOTTED       |      |
|               | CHECKED       |      |
|               | FILED         |      |
|               | CAD FILE NAME |      |
| NOTE BOOK NO. |               |      |
| BY            |               |      |

|               |           |      |
|---------------|-----------|------|
| PROFILE       | SURVEYED  | DATE |
|               | PLOTTED   |      |
|               | CHECKED   |      |
|               | FILED     |      |
|               | STRUCTURE |      |
|               | NOTATYNS  |      |
|               | CHKD      |      |
| NOTE BOOK NO. |           |      |
| BY            |           |      |

**CONSTRUCTION:**  
 THE LIGHTING POST SHALL BE HIGH-STRENGTH THICK WALLED CAST IRON. THE POLE MATERIAL SHALL CONFORM TO A.S.T.M. A48, CLASS 30 CAST IRON. THE SHAFT SHALL HAVE A DEEP 8-FLUTE PATTERN AND DECORATIVE BASE DESIGN. THE BASE SHALL HAVE AN 18 1/2" DIAMETER.

THERE SHALL BE (2) ACCESS DOORS IN THE BASE AND (1) HINGED ACCESS DOOR IN THE PEDESTAL. ALL HARDWARE SHALL BE STAINLESS STEEL. A GROUNDING LUG SHALL BE PROVIDED INSIDE ONE ACCESS DOOR.

**DIMENSIONS:**  
 THE POST SHALL HAVE A LUMINAIRE MOUNTING HEIGHT OF 12'-3". THE BASE SHALL HAVE AN 18 1/2" DIAMETER.

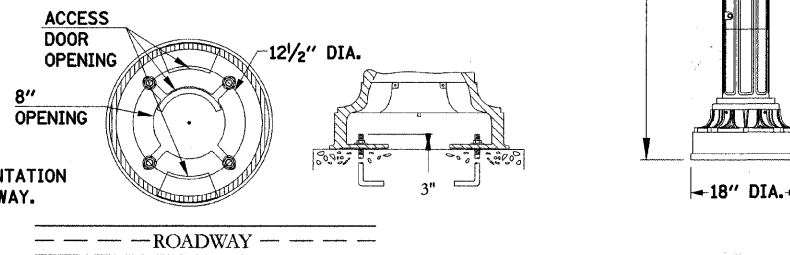
**LUMINAIRE MOUNTING:**  
 A 3" DIAMETER BY 3" TALL TENON WITH UNDERCUT SHALL BE AN INTEGRAL PART OF THE POLE PROVIDED FOR POST TOP MOUNTING OF LUMINAIRE.

**INSTALLATION:** (SEE DRAWING FOR DETAILS)  
 THE LIGHTING POLE SHALL BE PROVIDED WITH (4) 3/4" DIAMETER X 24" LONG "L-TYPE" ANCHOR BOLTS. EACH ANCHOR BOLT SHALL BE SUPPLIED ASSEMBLED WITH (2) NUTS, (2) FLAT WASHERS AND (1) SPLIT LOCK WASHER. THE POLE SHALL HAVE A 12" DIAMETER BOLT CIRCLE AND REQUIRES A 3" ANCHOR BOLT PROJECTION. ALL ANCHORAGE HARDWARE SHALL BE FULLY GALVANIZED.

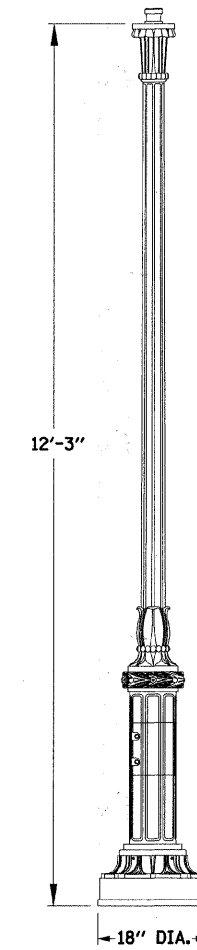
**FINISH:**  
 THE POLE SHALL BE SUPPLIED PRIME PAINTED WITH RED OXIDE PRIMER.

CATALOG NUMBER: SCI-B-F-12'  
 COLOR: BLACK

**INSTALLATION DETAIL**



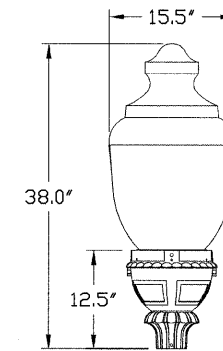
**NOTE:**  
 ANCHOR BOLT ORIENTATION PARALLEL TO ROADWAY.



**LIGHT POLE, SPECIAL (POLE DETAIL)**

SENTRY ELECTRIC = SCI-B-F-12' CAST IRON "B" SERIES POLE (SEE SPECIAL PROVISIONS)

- FEATURES:**
- SIX DIFFERENT ACORN GLOBE CONFIGURATIONS.
  - ORNAMENTAL HEAVY GAGE CAST ALUMINUM POLE TOP SLIPFITTER.
  - INTEGRAL BALLAST.
  - MOGUL BASE SOCKET STANDARD.
  - MEDIUM BASE SOCKET AVAILABLE (CONTACT FACTORY).
  - UV STABILIZED FOR COLOR CLARITY.
  - IMPACT RESISTANT DOWN TO -40° F.
  - TERMINAL BOARD STANDARD.
  - ALUMINUM BALLAST COVER.
  - TWIST LOCK PE RECEPTACLE MOUNTED IN DOOR.
  - LUMINAIRE SHIPPED AS COMPONENTS: BALLAST, OPTICAL.



**GLOBE 1H**

**LIGHT POLE, SPECIAL (LUMINAIRE DETAIL)**

GE PATRIARCH LUMINAIRE (SEE SPECIAL PROVISIONS)

|   |                    |                        |             |   |                              |   |         |        |              |           |
|---|--------------------|------------------------|-------------|---|------------------------------|---|---------|--------|--------------|-----------|
| FILE NAME =<br>...trans\fin.dwg\698.5.de:85.dgn | USER NAME = _USER_ | DESIGNED -             | REVISIONS - | <b>STATE OF ILLINOIS<br/>DEPARTMENT OF TRANSPORTATION</b> | <b>MISCELLANEOUS DETAILS</b> | F.A. RTE.                                     | SECTION | COUNTY | TOTAL SHEETS | SHEET NO. |
|   |                    | DRAWN <i>BAH</i>       | REVISIONS - |   |                              | 08-00270-00-TL                                | KANE    | 44     | 44           |           |
|   |                    | CHECKED <i>APS</i>     | REVISIONS - |   |                              | <b>CONTRACT NO. 63300</b>                     |         |        |              |           |
|   |                    | DATE -                 | REVISIONS - |   |                              | FED. ROAD DIST. NO. ILLINOIS FED. AID PROJECT |         |        |              |           |
|   |                    | PLOT SCALE = #SCALE#   |             | SCALE:  | SHEET NO.                    | OF  | SHEETS  | STA.   | TO           | STA.      |
|   |                    | PLOT DATE = 12/17/2009 |             |   |                              |   |         |        |              |           |