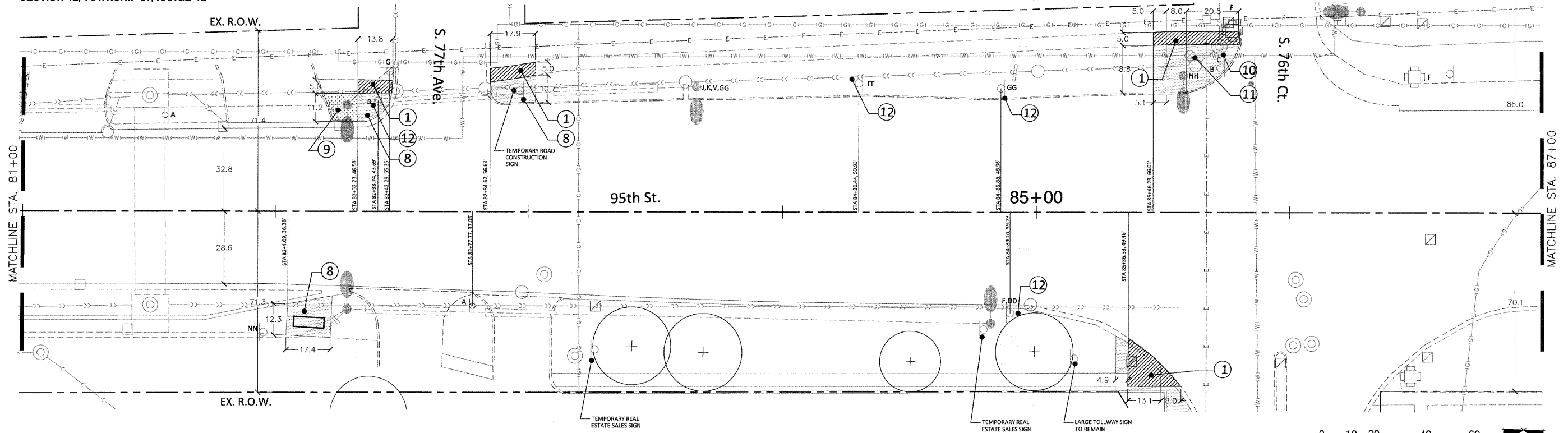


SECTION 1, TOWNSHIP 37, RANGE 12  
SECTION 12, TOWNSHIP 37, RANGE 12



DEMOLITION PLAN NOTES:

1. SIDEWALK REMOVAL.
2. TREE PROTECTION AND PRESERVATION.
3. TREE REMOVAL.
4. BUS SHELTER REMOVE AND RELOCATE.
5. PAVEMENT REMOVAL.
6. CURB AND GUTTER REMOVAL.
7. TREE TO BE RELOCATED.
8. EARTH EXCAVATION.
9. SOD STRIPPING.
10. MANHOLE TO BE ADJUSTED.
11. VALVE BOX TO BE ADJUSTED.
12. STREET SIGN TO BE REMOVED.

\* SITE SURVEY PROVIDED BY:  
ROBINSON ENGINEERING, INC.  
17000 South Park Avenue  
South Holland, Illinois 60473  
(708) 331-6700

\* SEE ALSO DEMOLITION PLAN GENERAL NOTES SHEET 3

LANDSCAPE LEGEND

- EXISTING SHADE TREE
- EXISTING EVERGREEN TREE
- TREE PROTECTION FENCING

STREET SIGN LEGEND

- \*SEE SHEET 5 FOR EXISTING SIGN SCHEDULE
- SIGN ON FREE STANDING POLE
  - SIGN MOUNTED ON TRAFFIC LIGHT POLE OR STREET LIGHT POLE

FILE NAME = pri\_existing conditions - IDOT P18

USER NAME =	DESIGNED -- BCL	REVISED -- 10/30/2009
PLOT SCALE = 1"=20'	CHECKED -- KLG	REVISED -- 11/30/2009
PLOT DATE = 8/21/2009	DRAWN -- BCL/RJA	REVISED -- 12/17/2009
	CHECKED -- KLG/LMV	REVISED --

STATE OF ILLINOIS  
DEPARTMENT OF TRANSPORTATION

EXISTING CONDITIONS/ REMOVAL PLAN

SCALE: 1"=20' SHEET NO. 18 OF 62 SHEETS STA. 81+00 TO STA. 87+00

F.A.P. RTE.	SECTION	COUNTY	TOTAL SHEETS	SHEET NO.
29	09-00056-00-LS	COOK	62	18
CONTRACT NO. 63321				
FED. ROAD DIST. NO. ILLINOIS FED. AID PROJECT ARA-9003(343)				