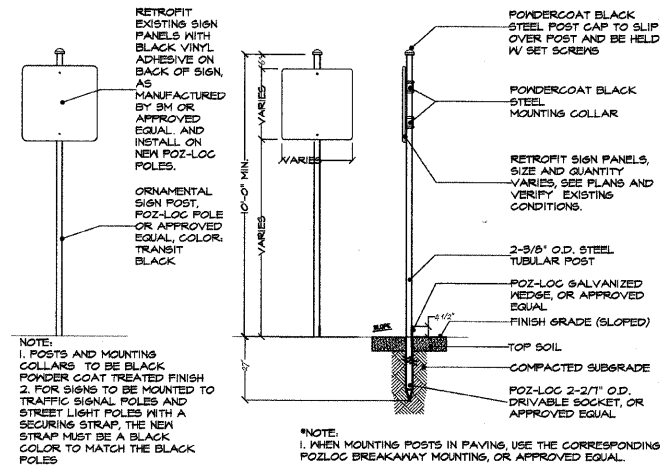


1 INTENTIONALLY OMITTED
51

2 INTENTIONALLY OMITTED
51

3 INTENTIONALLY OMITTED
51

4 INTENTIONALLY OMITTED
51

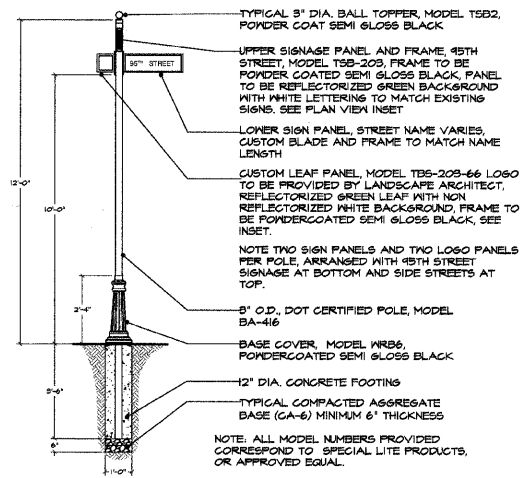


NOTE:
1. POSTS AND MOUNTING COLLARS TO BE BLACK POWDER COAT TREATED FINISH
2. FOR SIGNS TO BE MOUNTED TO TRAFFIC SIGNAL POLES AND STREET LIGHT POLES WITH A SECURING STRAP, THE NEW STRAP MUST BE A BLACK COLOR TO MATCH THE BLACK POLES

NOTE:
1. WHEN MOUNTING POSTS IN PAVING, USE THE CORRESPONDING POZLOC BREAKAWAY MOUNTING, OR APPROVED EQUAL.

RELOCATE SIGN PANEL ASSEMBLY, RELOCATE SIGN PANEL, AND ORNAMENTAL SIGN POST DETAILS

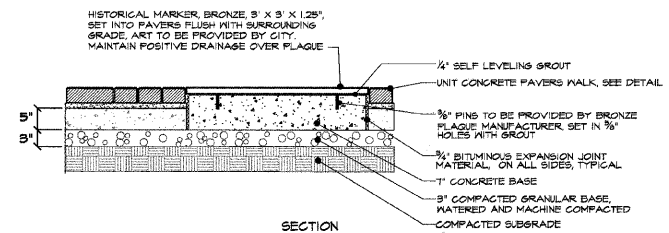
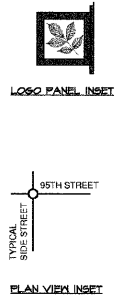
NOT TO SCALE



NOTE: ALL MODEL NUMBERS PROVIDED CORRESPOND TO SPECIAL LITE PRODUCTS, OR APPROVED EQUAL.

ORNAMENTAL STREET SIGN POST, COMPLETE

NOT TO SCALE



HISTORICAL MARKER SIGN POST, COMPLETE

NOT TO SCALE

USER NAME =	DESIGNED — BCL	REVISED — 10/30/2009
	CHECKED — KLG	REVISED — 11/30/2009
PLOT SCALE = N.T.S.	DRAWN — BCL/RJA	REVISED — 12/17/2009
PLOT DATE = 8/21/2009	CHECKED — KLG/LMV	REVISED —

F.A.P. RTE.	SECTION	COUNTY	TOTAL SHEETS	SHEET NO.
29	09-00056-00-LS	COOK	62	51
CONTRACT NO. 63321				
FED. ROAD DIST. NO. 1 ILLINOIS FED. AID PROJECT ARA-9003(343)				