

STATE OF ILLINOIS DEPARTMENT OF TRANSPORTATION DIVISION OF HIGHWAYS

PLANS FOR PROPOSED FEDERAL AID HIGHWAY

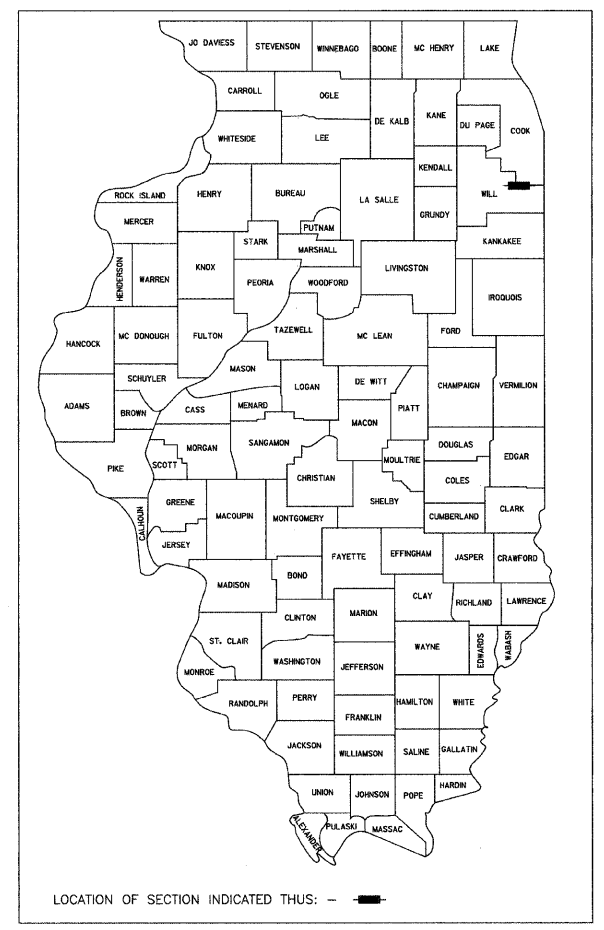
UNIVERSITY PARKWAY (FAU 2967)
CRAWFORD (NORTHWEST) TO STEGER/MONEE (SOUTHEAST)
LAPP RESURFACING

SECTION: 09-00018-00-RS
PROJECT: ARA-9003(431)
VILLAGE OF UNIVERSITY PARK
WILL COUNTY
JOB NO.: C-91-866-09

F.A.U. RTE.	SECTION	COUNTY	TOTAL SHEETS	SHEET NO.
2967	09-00018-00-RS	WILL	10	1
STA. TO STA.		ILLINOIS FED. AID PROJECT		
ARA-9003 (431)		CONTRACT NO. 63328		

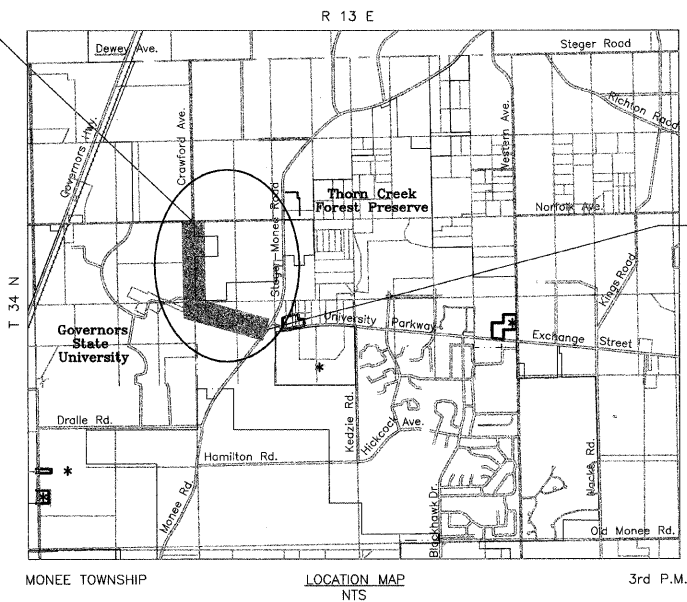
INDEX TO SHEETS	PAGE
TITLE SHEET	1
GENERAL NOTES	2
SUMMARY OF QUANTITIES	3
TYPICAL SECTIONS	4
SITE PLAN	5-6
DISTRICT ONE TYPICAL PAVEMENT MARKINGS	7
BUTT JOINT AND HMA TAPER DETAILS	8
TRAFFIC CONTROL FOR SIDE ROADS, INTERSECTIONS AND DRIVEWAYS	9
RAISED REFLECTIVE PAVEMENT MARKERS	10

TRAFFIC DATA
ADT(YEAR) = 8800 VPD (2007)
SPEED LIMIT = 40 MPH
DESIGN CONSIDERATION: COLLECTOR

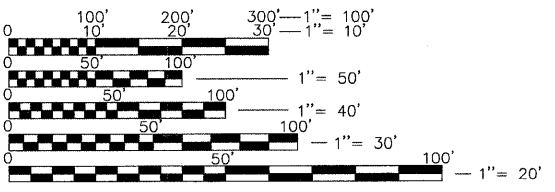


PROJECT IS LOCATED IN
VILLAGE OF UNIVERSITY PARK

PROJECT BEGINS
STA 9+50



PROJECT ENDS
STA 62+22



GROSS LENGTH OF PROJECT = 5272' (1.0 MILES)
NET LENGTH OF PROJECT = 5272' (1.0 MILES)

FIELD ENGINEER: MELCHOR MANGOBA (847)705-4408

J.U.L.I.E.
JOINT UTILITY LOCATION INFORMATION FOR EXCAVATION
1-800-892-0123 OR 811

CONTRACT NO. 63328

STATE OF ILLINOIS DEPARTMENT OF TRANSPORTATION
DIVISION OF HIGHWAYS

APPROVED Al R. McCowan
MAYOR
LOCAL AGENCY REPRESENTATIVE

PASSED DECEMBER 7, 2009
Christopher Holt
LOCAL AGENCY ENGINEER

Releasing for Bid Based on Limited Review DECEMBER 8, 2009
Diana M. O'Keefe
Deputy Director of Highways, Region I Engineer

CMT
CRAWFORD MURPHY & TILLY, INC.
CONSULTING ENGINEERS
550 NORTH COMMONS DR. STE. 116
AURORA, ILLINOIS 60504
(630) 820-1022

PROFESSIONAL ENGINEER
JOEL S. KOENIG
062-045311
STATE OF ILLINOIS

SUBMITTED BY Joel S. Koenig
Joel Koenig, P.E.

DATE DECEMBER 1, 2009

PRINTED BY THE AUTHORITY
OF THE STATE OF ILLINOIS

F.A.U. RTE.	SECTION	COUNTY	TOTAL SHEETS	SHEET NO.
2967	09-00018-00-RS	WILL	10	2
STA.		TO STA.		
ARA-9003 (431)		ILLINOIS	FED. AID PROJECT	
CONTRACT NO. 63328				

GENERAL NOTES:

1. ALL CONTRACTORS SHALL BE RESPONSIBLE FOR THE FOLLOWING ITEMS, WHICH SHALL ALSO BE INCLUDED IN THE COST OF CONSTRUCTION.
 - A. EXAMINATION OF THE ENGINEERING PLANS AND SPECIFICATIONS AND THE EXISTING SITE CONDITIONS PRIOR TO SUBMITTING A BID, AND NOTIFYING THE ENGINEER AT ONCE OF ANY DISCREPANCIES.
 - B. CALLING ATTENTION TO THE ENGINEER OF ANY ERRORS OR DISCREPANCIES ON THE PLANS WHICH MAY BE SUSPECTED ON LINES AND GRADES. THE CONTRACTOR SHALL NOT PROCEED WITH THE WORK UNTIL THE PLANS BELIEVED TO BE IN ERROR HAVE BEEN VERIFIED OR CORRECTED BY THE ENGINEER.
 - C. THE PROVIDING OF SAFE AND HEALTHFUL WORK CONDITIONS THROUGHOUT THE PROSECUTION OF THE CONSTRUCTION WORK. THIS SHALL INCLUDE, BUT NOT BE LIMITED TO: THE REMOVAL OF DEBRIS, THE PROTECTION OF CONSTRUCTION HAZARDS WITH BARRICADES, AND THE KEEPING OF PUBLIC STREET PAVEMENT, SIDEWALK AND RIGHT OF WAY CLEAN OF CONSTRUCTION DIRT AND DEBRIS.
2. CONTRACTOR SHALL CLEAN STREETS TRAVELED ON DURING CONSTRUCTION PROCEDURES ON A DAILY BASIS REMOVING ALL MUD AND DUST.
3. ALL EXCESS EXCAVATED MATERIAL SHALL BE DISPOSED OF OFFSITE BY THE CONTRACTOR AT A LEGAL DUMPSITE, THESE COSTS SHALL BE INCLUDED IN THE COST OF CLASS D PATCHES.
4. ALL DISTURBED AREAS SHALL BE CLEANED UP AND RESTORED AS APPLICABLE. CLEAN UP SHOULD FOLLOW CLOSELY BEHIND CONSTRUCTION OPERATIONS. PAVEMENT SHALL BE MAINTAINED IN A CLEAN AND NEAT FASHION.
5. WHENEVER DURING CONSTRUCTION OPERATIONS LOOSE MATERIAL IS DEPOSITED IN THE FLOW LINE OF DRAINAGE STRUCTURES SUCH THAT THE NATURAL FLOW OF WATER IS OBSTRUCTED, IT SHALL BE REMOVED AT THE CLOSE OF EACH WORKING DAY. AT THE CONCLUSION OF CONSTRUCTION OPERATIONS, ALL UTILITY STRUCTURES SHALL BE FREE FROM DIRT AND DEBRIS. THE WORK SPECIFIED ABOVE WILL NOT BE PAID FOR SEPARATELY BUT SHALL BE INCLUDED IN THE COST OF INLET AND PIPE PROTECTION.
6. THE RESTORATION TO THE ORIGINAL CONDITION OR BETTER OF ANY OFFSITE AREAS THAT ARE DAMAGED BY CONTRACTOR DURING CONSTRUCTION, SHALL BE INCLUDED IN THE COST OF CONSTRUCTION.
7. THE TRAFFIC CONTROL AND PROTECTION OF ALL WORK CONDUCTED WITHIN PUBLIC RIGHT-OF-WAY, SHALL BE IN ACCORDANCE WITH THE APPLICABLE ARTICLES OF SECTIONS 107, 701-702 AND 1084 OF THE "STANDARD SPECIFICATIONS FOR ROAD AND BRIDGE CONSTRUCTION" LATEST EDITION, AND THE LATEST EDITION OF THE FHWA AND "ILLINOIS SUPPLEMENTAL MANUAL ON UNIFORM TRAFFIC CONTROL DEVICES FOR STREETS AND HIGHWAYS."
8. CONTRACTOR SHALL RESTRICT HIS OPERATIONS TO PROPERTY, EASEMENTS AND RIGHT-OF-WAY AS SHOWN ON THE ENGINEERING PLANS.
9. PRIOR TO COMMENCING CONSTRUCTION, CONTRACTOR SHALL ARRANGE TO HAVE ALL UNDERGROUND UTILITIES INCLUDING WATER, GAS, ELECTRIC, STORM SEWER, SANITARY SEWER, TELEPHONE, AND CABLE TV SUITABLY MARKED PRIOR TO CONSTRUCTION. SHOULD A UTILITY BE IN CONFLICT WITH THE PROPOSED CONSTRUCTION, THE ENGINEER SHALL BE NOTIFIED AT ONCE. IF UTILITIES INTERFERE WITH THE CONSTRUCTION ALIGNMENT, AND WITHOUT CLAIM BY THE CONTRACTOR FOR DELAYS DUE TO THE UTILITY LINES ENCOUNTERED. AQUA ILLINOIS WATER COMPANY SHOULD BE NOTIFIED 48 HOURS IN ADVANCE OF WATERMAIN AND SANITARY CROSSINGS.
10. CONTRACTOR SHALL PROTECT ALL PROPERTY PINS AND SURVEY MONUMENTS AND SHALL RESTORE ANY WHICH ARE DISTURBED BY HIS OPERATIONS AT NO ADDITIONAL COST TO THE CONTRACT.
11. ALL EXISTING TRAFFIC SIGNS, FENCES, GUARDRAILS, STREET SIGNS, ETC. WHICH INTERFERE WITH CONSTRUCTION OPERATIONS AND NOT NOTED FOR REMOVAL OR DISPOSAL SHALL BE MAINTAINED BY THE CONTRACTOR OR TEMPORARILY RELOCATED. THIS IS CONSIDERED INCLUDED IN THE COST OF MOBILIZATION AND NO ADDITIONAL COMPENSATION SHALL BE ALLOWED. DAMAGE TO THESE ITEMS SHALL BE REPAIRED BY THE CONTRACTOR AT HIS OWN EXPENSE. IN ADDITION, ALL MAILBOXES THAT INTERFERE WITH CONSTRUCTION SHALL BE SIMILARLY RELOCATED AT NO ADDITIONAL COST.
12. SITE CONDITIONS DURING THE COURSE OF CONSTRUCTION OF THIS PROJECT SHALL BE HIS SOLE AND COMPLETE RESPONSIBILITY, INCLUDING SAFETY OF ALL PERSONS AND PROPERTY; THIS REQUIREMENT SHALL APPLY CONTINUOUSLY AND IS NOT LIMITED TO NORMAL WORKING HOURS. THE CONTRACTOR SHALL DEFEND, INDEMNIFY AND HOLD THE OWNER AND ENGINEER HARMLESS FROM ANY AND ALL LIABILITY, REAL OR ALLEGED, IN CONNECTION WITH THE PERFORMANCE OR WORK ON THIS PROJECT.
13. TAKE THE NECESSARY PRECAUTIONS TO PROTECT EXISTING FENCE, POSTS AND GATES DURING CONSTRUCTION. ALL WORK AND MATERIAL NECESSARY TO REPLACE EXISTING FENCE, POSTS AND GATES DAMAGED BECAUSE OF NONCOMPLIANCE WILL BE AT THE CONTRACTORS OWN EXPENSE, AND NO EXTRA COMPENSATION WILL BE ALLOWED.
14. MAINTAIN ACCESS TO ALL BUSINESSES, RESIDENCES, AGRICULTURAL AREAS AND ALL OTHER SITES NECESSARY FOR THE MAINTENANCE OF COMMERCE AND SAFETY AT ALL TIMES. THE CONTRACTOR MAY PLACE TEMPORARY PLATES OR OTHER SUCH DEVICES IN A SAFE AND ACCESSIBLE MANOR TO TEMPORARILY MAINTAIN ACCESS. IN NO CASE MAY MORE THAN ONE POINT OF ACCESS TO ANY RESIDENCE, BUSINESS OR SITE BE UNDER CONSTRUCTION SIMULTANEOUSLY. COSTS FOR MAINTAINING ACCESS SHALL BE INCLUDED IN THE COST OF CONSTRUCTION.
15. ALL FIELD TILE ENCOUNTERED DURING CONSTRUCTION OPERATIONS SHALL BE REPAIRED WITH NEW PIPE PER THE SPECIFICATIONS. A RECORD OF THE LOCATION OF ALL FIELD TILE OR ON SITE DRAIN PIPE ENCOUNTERED SHALL BE KEPT BY THE CONTRACTOR AND TURNED OVER TO THE ENGINEER UPON COMPLETION OF THE PROJECT. FIELD TILE REPAIR SHALL BE CONSIDERED INCLUDED IN THE COST OF INLET AND PIPE PROTECTION.
16. CONTRACTOR SHALL PROTECT ANY CULVERTS ENCOUNTERED OR REMOVE AND REPLACE THEM AT NO ADDITIONAL COST.
17. ALL SAWCUTTING SHALL BE INCLUDED IN REMOVAL ITEMS AND SHALL BE PERFORMED PRIOR TO BEGINNING REMOVAL. ANY ITEMS OF WORK REMOVED PRIOR TO SAWCUTTING WILL NOT BE MEASURED FOR PAYMENT, BUT SHALL BE INCLUDED IN THE COST OF CONSTRUCTION
18. IT SHALL BE THE CONTRACTORS RESPONSIBILITY TO VERIFY ALL DIMENSIONS AND CONDITIONS EXISTING IN THE FIELD PRIOR TO ORDERING MATERIALS AND BEGINNING CONSTRUCTION.
19. ALL EXISTING OR PROPOSED STORM SEWER DAMAGED BY THE CONTRACTOR DURING CONSTRUCTION SHALL BE REPLACED BY THE CONTRACTOR AND IS INCLUDED IN THE COST OF INLET AND PIPE PROTECTION.
20. THE CONTRACTOR SHALL NOT OPEN OR SHUT ANY WATER VALVES OR FIRE HYDRANTS. CONTACT AQUA ILLINOIS WATER DEPARTMENT (708-534-6513) FOR THEM TO TURN VALVES OR OPERATE HYDRANTS. UNAUTHORIZED USE SHALL SUBJECT THE OFFENDER TO ARREST AND PROSECUTION.
21. A SUPPLY OF WATER FOR CONSTRUCTION OR OTHER SPECIAL PURPOSES MUST BE APPLIED FOR IN WRITING AND UPON DEPOSIT (\$75.00) APPLICATION MAY BE MADE TO AQUA ILLINOIS WATER COMPANY 24560 S. WESTERN AVENUE, UNIVERSITY PARK, IL (708-534-6513). THIS WORK IS INCLUDED IN THE COST OF MOBILIZATION.

REVISIONS	
NAME	DATE

VILLAGE OF UNIVERSITY PARK
UNIVERSITY PARK, IL
UNIVERSITY PARKWAY RESURFACING
CRAWFORD AVENUE TO STEGER-MONEE ROAD

GENERAL NOTES

SCALE: VERT. NA
HORIZ. NA
DATE: OCTOBER, 2009

DRAWN BY: CMH
CHECKED BY: JSK



F.A.U. RTE.	SECTION	COUNTY	TOTAL SHEETS	SHEET NO.
2967	09-00018-00-RS	WILL.	10	3
STA.		TO STA.		
ARA-9003 (431)		ILLINOIS	FED. AID PROJECT	
CONTRACT NO. 63328				

SUMMARY OF QUANTITIES

SPECIAL PROVISION	ITEM NO.	DESCRIPTION	UNIT	CONSTRUCTION CODE
				1000 TOTAL QUANTITY
	21101615	TOPSOIL FURNISH AND PLACE - 4"	SY YD	4400
	25000210	SEEDING CLASS 2A	ACRE	0.9
	25100105	MULCH METHOD 1	ACRE	0.9
	28000400	PERIMETER EROSION BARRIER	FOOT	400
	28000500	INLET AND PIPE PROTECTION	EACH	5
	40600100	BITUMINOUS MATERIALS (PRIME COAT)	GAL	4200
	40600300	AGGREGATE PRIME COAT	TON	24
	40603335	HOT-MIX ASPHALT SURFACE COURSE, MIX "D", N50	TON	2500
	40600625	LEVELING BINDER (MACHINE METHOD), N50	TON	720
	40600982	HOT-MIX SURFACE REMOVAL, BUTT JOINT	SY YD	1200
	44201705	CLASS D PATCH, TYPE II - 5"	SQ YD	300
	44201709	CLASS D PATCH, TYPE III - 5"	SQ YD	300
	44201711	CLASS D PATCH, TYPE IV - 5"	SQ YD	300
	44300100	AREA REFLECTIVE CRACK CONTROL TREATMENT	SQ YD	15600
	48101200	AGGREGATE SHOULDERS TYPE B	TON	1100
	67100100	MOBILIZATION	L SUM	1
	70102620	TRAFFIC CONTROL AND PROTECTION STD. 701501	L SUM	1
	70102635	TRAFFIC CONTROL AND PROTECTION STD. 701701	L SUM	1
	70106800	CHANGEABLE MESSAGE SIGN	CAL MO	6
	70300210	TEMPORARY PAVEMENT MARKING-LETTERS AND SYMBOLS	SQ FT	10
	70300220	TEMPORARY PAVEMENT MARKING-LINE 4"	FOOT	4000
	70300240	TEMPORARY PAVEMENT MARKING-LINE 6"	FOOT	300
	70300260	TEMPORARY PAVEMENT MARKING-LINE 12"	FOOT	10
	70300280	TEMPORARY PAVEMENT MARKING-LINE 24"	FOOT	400
Δ	78000100	THERMOPLASTIC PVMT. MKG. - LETTERS & SYMBOLS	SQ FT	150
Δ	78000200	THERMOPLASTIC PVMT. MKG. - LINE 4"	FOOT	14800
Δ	78000400	THERMOPLASTIC PVMT. MKG. - LINE 6"	FOOT	500
Δ	78000600	THERMOPLASTIC PVMT. MKG. - LINE 12"	FOOT	100
Δ	78000650	THERMOPLASTIC PVMT. MKG. - LINE 24"	FOOT	130
Δ	78100100	RAISED REFLECTIVE PAVEMENT MARKER	EACH	70

Δ = SPECIALTY ITEM

INDEX OF STANDARDS

606001-04	CONCRETE CURB TYPE B AND COMBINATION CONCRETE CURB AND GUTTER
701006-03	OFF-RD OPERATIONS, 2L, 2W, 15' (4.5 M) TO 24' (600 MM) FROM PAVEMENT EDGE
701301-03	LANE CLOSURE, 2L, 2W, SHORT TIME OPERATIONS
701501-05	URBAN LANE CLOSURE, 2L, 2W UNDIVIDED
701701-06	URBAN LANE CLOSURE, MULTILANE INTERSECTION
701901-01	TRAFFIC CONTROL DEVICES
780001-02	TYPICAL PAVEMENT MARKINGS
280001-05	TEMPORARY EROSION CONTROL SYSTEMS
442201-03	CLASS C AND D PATCHES
635001-01	DELINEATORS
720001-01	SIGN PANEL MOUNT DETAILS
720006-02	SIGN PANEL ERECT DETAILS
720011-01	METAL POSTS FOR SIGNS, MARKERS, AND DELINEATORS

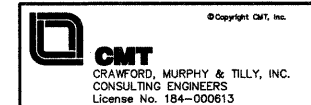
REVISIONS	
NAME	DATE

VILLAGE OF UNIVERSITY PARK
UNIVERSITY PARK, IL
UNIVERSITY PARKWAY RESURFACING
CRAWFORD AVENUE TO STEGER-MONEE ROAD

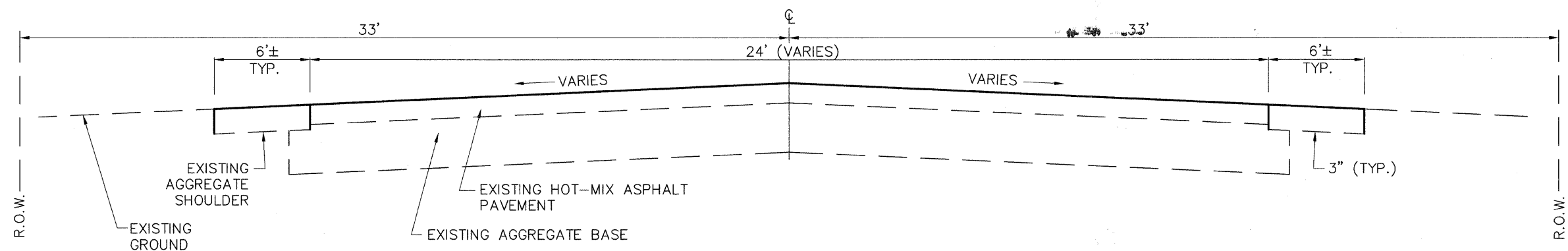
SUMMARY OF QUANTITIES

SCALE: VERT. NA
HORIZ. NA
DATE: OCTOBER, 2009

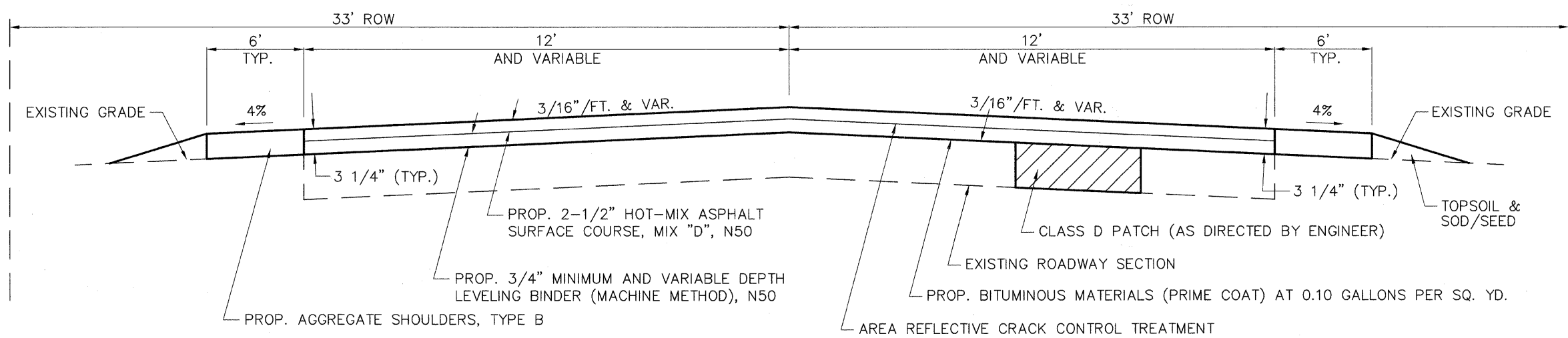
DRAWN BY: CMH
CHECKED BY: JSK



F.A.U. RTE.	SECTION	COUNTY	TOTAL SHEETS	SHEET NO.
2967	09-00018-00-RS	WILL	10	4
STA.		TO STA.		
ARA-9003 (431)		ILLINOIS	FED. AID PROJECT	
CONTRACT NO. 63328				



EXISTING TYPICAL SECTION
 STA 9+50 TO STA 62+22, UNIVERSITY PARKWAY
 N.T.S.



PROPOSED TYPICAL SECTION
 STA 10+40 TO STA 61+70, UNIVERSITY PARKWAY
 N.T.S.

HOT-MIX ASPHALT MIXTURE REQUIREMENTS

LOCATION	MIXTURE TYPE	AIR VOIDS
PAVEMENT	HOT-MIX ASPHALT SURFACE COURSE, MIX "D", N50 (IL 9.5mm), 2-1/2"	4% @ 50 Gyr.
PAVEMENT	LEVELING BINDER (MACHINE METHOD), N50, 3/4"	4% @ 50 Gyr.
PATCHING	CLASS D PATCHES (HMA BINDER IL-19mm)	4% @ 70 Gyr.

THE UNIT WEIGHT USED TO CALCULATE ALL HMA SURFACE MIXTURE QUANTITIES IS 112 LBS/SQ YD/IN. CONTRACTOR SHALL MILL PRIOR TO PATCHING

THE "AC TYPE" FOR POLYMERIZED HMA MIXES SHALL BE "SBS/SBR PG 70 -22" AND FOR NON-POLYMERIZED HMA THE "AC TYPE" SHALL BE "PG 64 -22" UNLESS MODIFIED BY DISTRICT ONE SPECIAL PROVISIONS. FOR "PERCENT OF RAP" SEE DISTRICT ONE SPECIAL PROVISIONS.



REVISIONS	
NAME	DATE

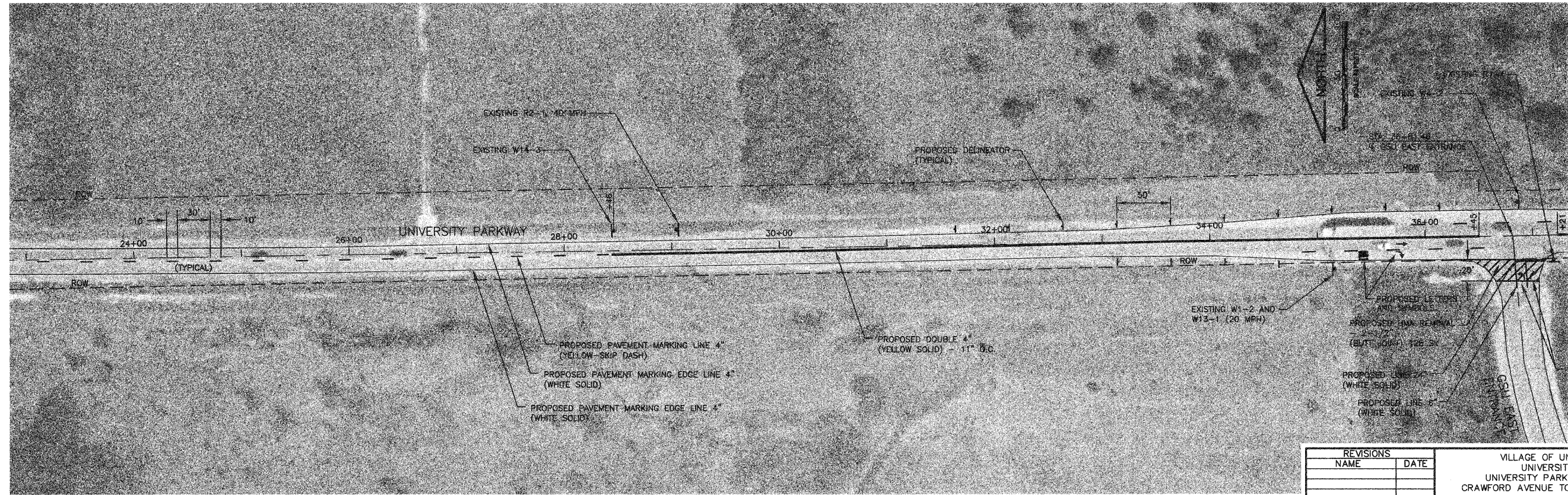
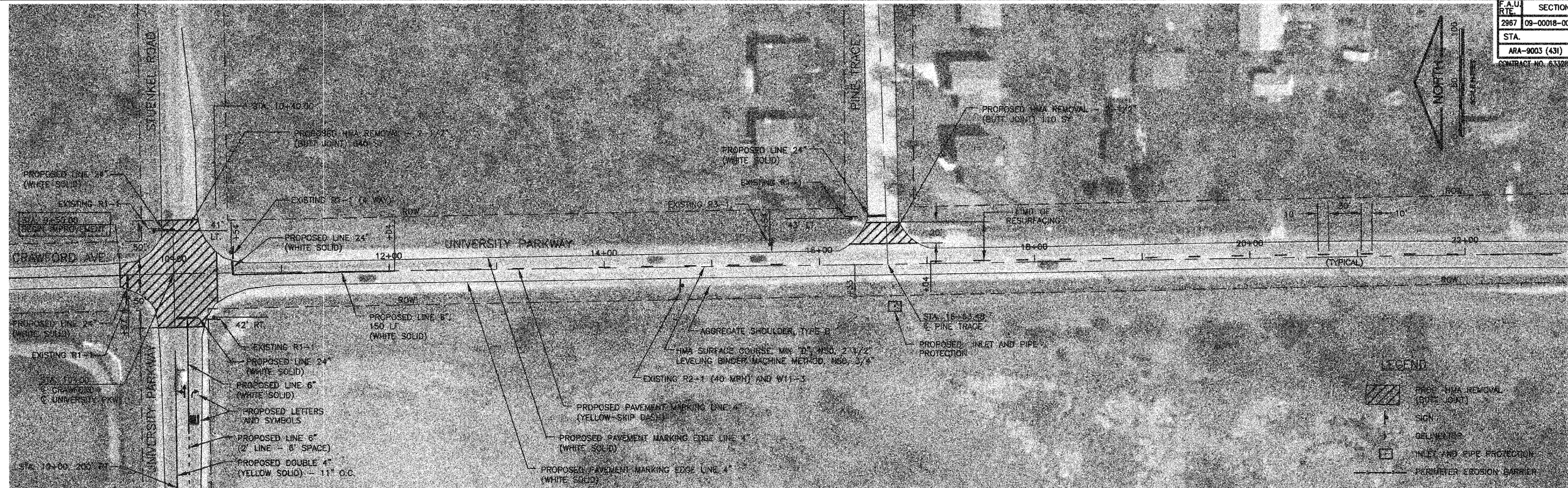
VILLAGE OF UNIVERSITY PARK
 UNIVERSITY PARK, IL
 UNIVERSITY PARKWAY RESURFACING
 CRAWFORD AVENUE TO STEGER-MONEE ROAD

TYPICAL SECTION

SCALE: VERT. NA
 HORIZ. NA
 DATE: OCTOBER, 2009

DRAWN BY: CMH
 CHECKED BY: JSK

F.A.U. RTE.	SECTION	COUNTY	TOTAL SHEETS	SHEET NO.
2967	09-00018-00-RS	WILL	10	5
STA.	TO STA.			
ARA-9003 (431)	ILLINOIS FED. AID PROJECT			
CONTRACT NO. 63328				



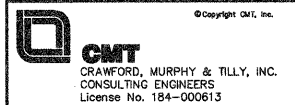
REVISIONS	
NAME	DATE

VILLAGE OF UNIVERSITY PARK
 UNIVERSITY PARK, IL
 UNIVERSITY PARKWAY RESURFACING
 CRAWFORD AVENUE TO STEGER-MONEE ROAD

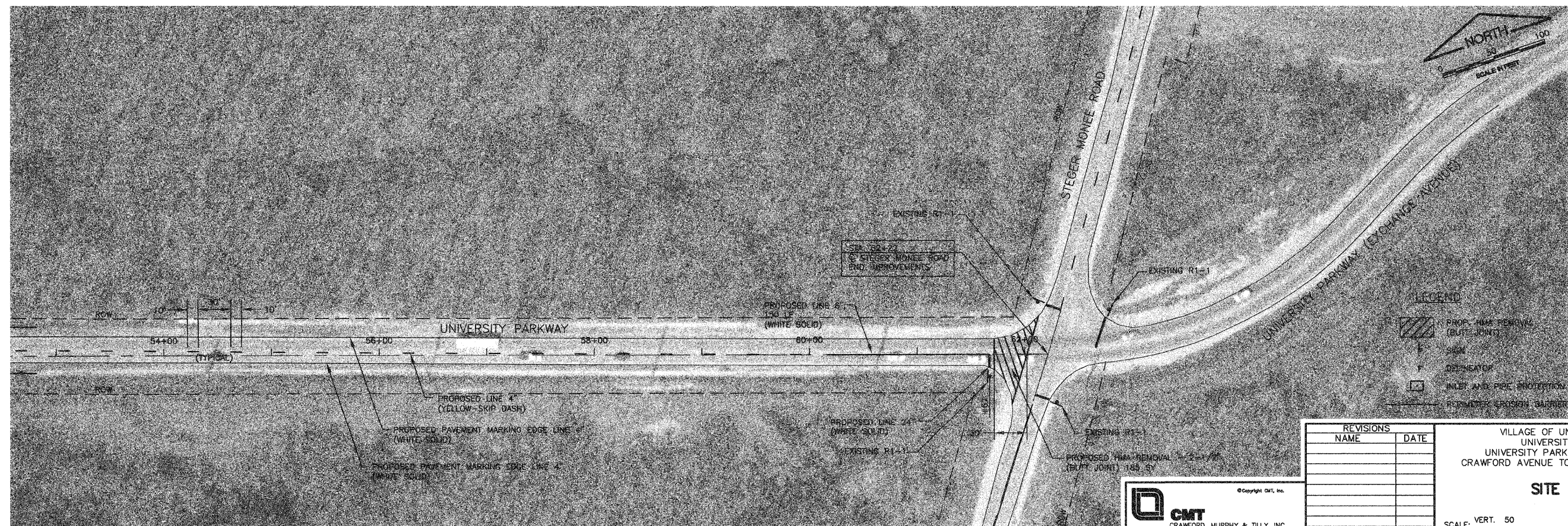
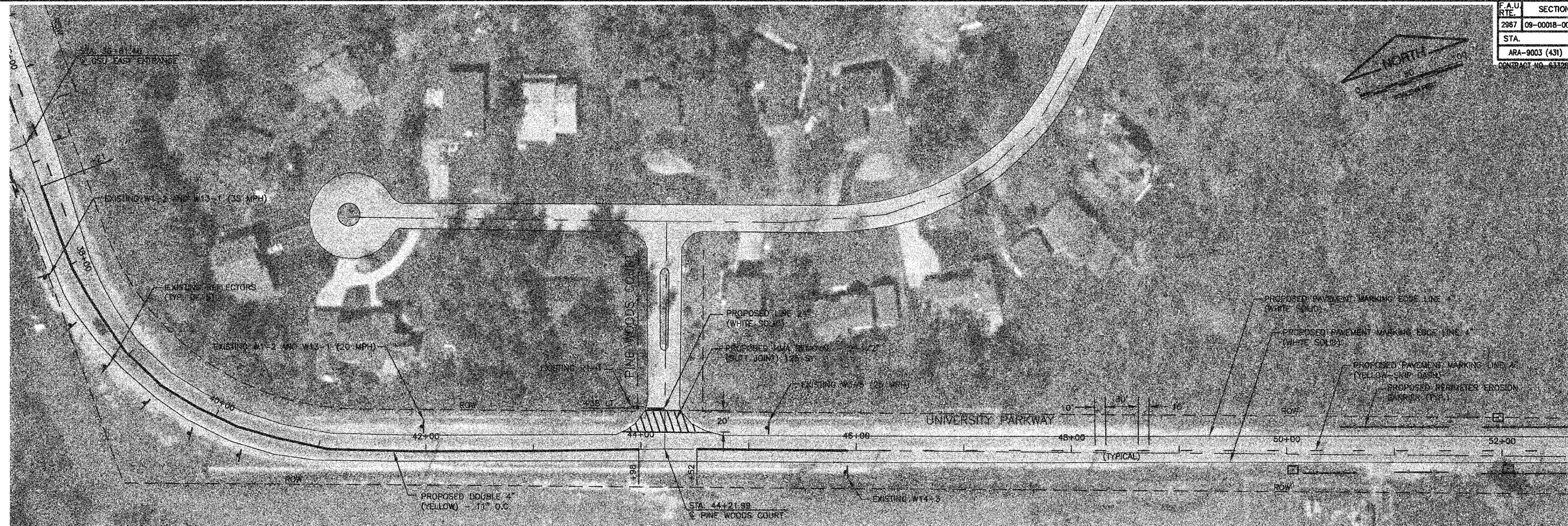
SITE PLAN

SCALE: VERT. 50
 HORIZ. 50
 DATE: OCTOBER, 2009

DRAWN BY: RJB
 CHECKED BY: JSK



F.A.U. RTE.	SECTION	COUNTY	TOTAL SHEETS	SHEET NO.
2987	09-00018-00-RS	WILL	10	6
STA.	TO STA.			
ARA-9003 (431)	ILLINOIS		FED. AID PROJECT	
CONTRACT NO. 63326				



LEGEND

	PROP. HMA REMOVAL (BLATT JOINT)
	SIGN
	DEPRESSOR
	INLET AND PIPE PROTECTION
	PERIMETER EROSION BARRIER

REVISIONS	
NAME	DATE

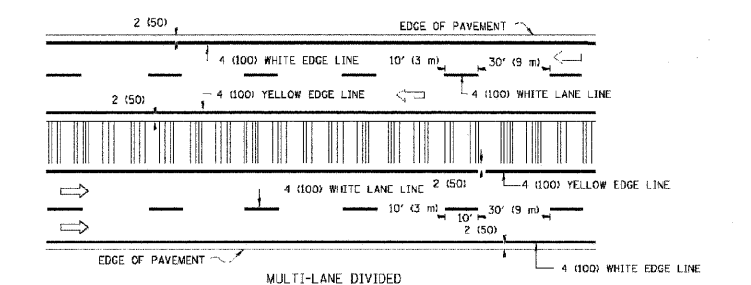
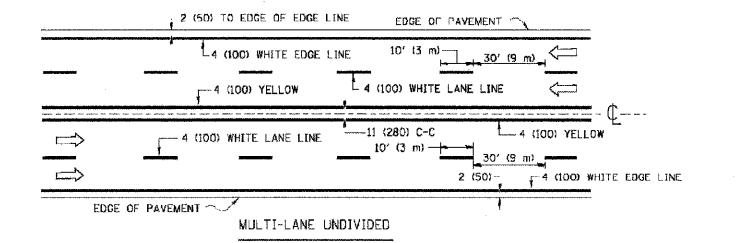
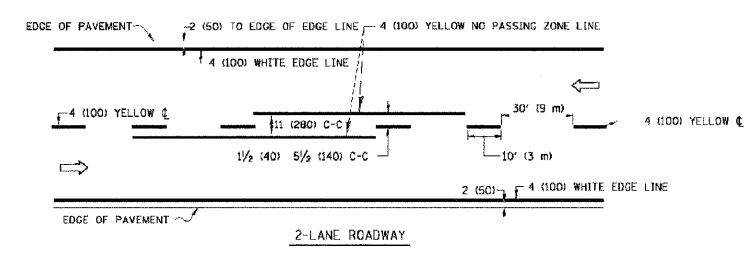
VILLAGE OF UNIVERSITY PARK
 UNIVERSITY PARK, IL
 UNIVERSITY PARKWAY RESURFACING
 CRAWFORD AVENUE TO STEGER-MONEE ROAD

SITE PLAN

SCALE: VERT. 50
 HORIZ. 50
 DATE: OCTOBER, 2009

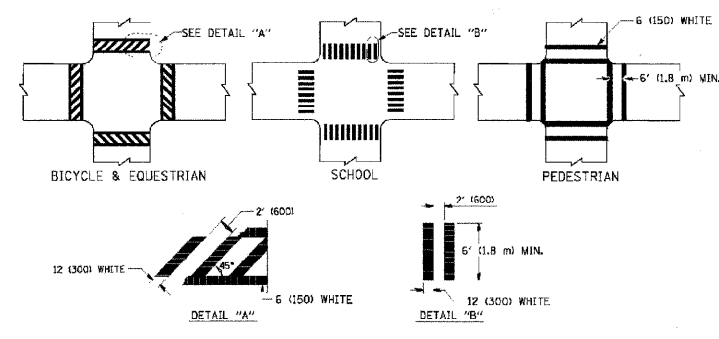
DRAWN BY: RJB
 CHECKED BY: JSK

CMT
 CRAWFORD, MURPHY & TILLY, INC.
 CONSULTING ENGINEERS
 License No. 184-000613

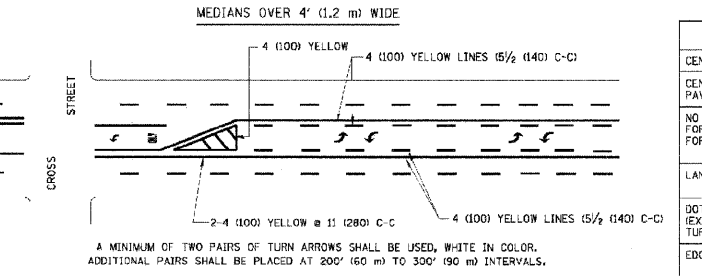
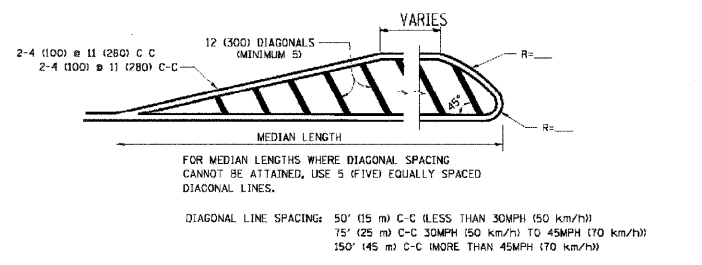
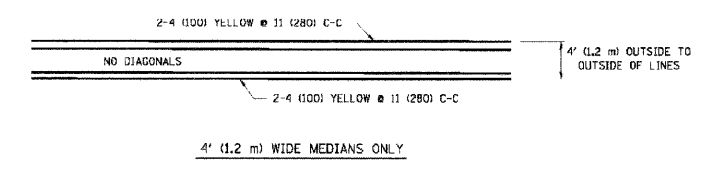


NOTE: MEDIANS WITH BARRIER CURB DO NOT REQUIRE AN EDGE LINE

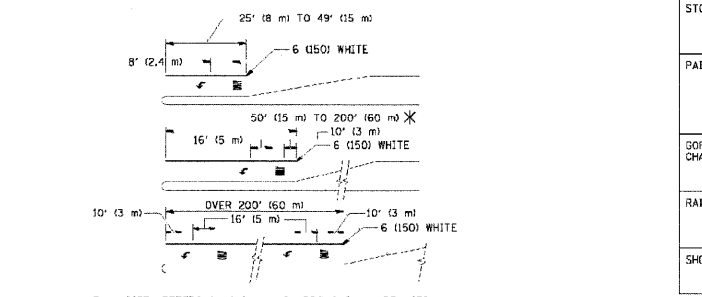
TYPICAL LANE AND EDGE LINE MARKING



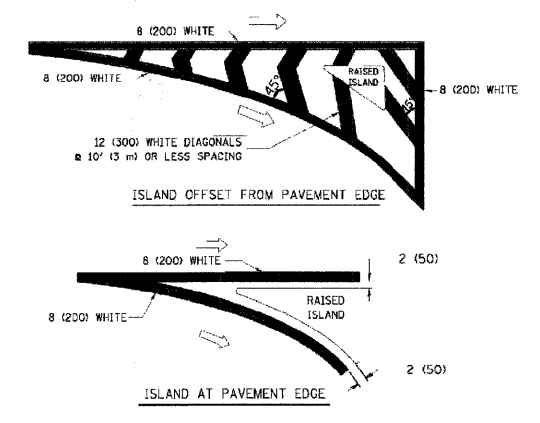
TYPICAL CROSSWALK MARKING



TYPICAL PAINTED MEDIAN MARKING



TYPICAL TURN LANE MARKING



TYPICAL ISLAND MARKING

TYPE OF MARKING	WIDTH OF LINE	PATTERN	COLOR	SPACING / REMARKS
CENTERLINE ON 2 LANE PAVEMENT	4 (100)	SKIP-DASH	YELLOW	10' (3 m) LINE WITH 30' (9 m) SPACE
CENTERLINE ON MULTI-LANE UNDIVIDED PAVEMENT	2 @ 4 (100)	SOLID	YELLOW	11 (280) C-C
NO PASSING ZONE LINES FOR ONE DIRECTION FOR BOTH DIRECTIONS	4 (100) 2 @ 4 (100)	SOLID SOLID	YELLOW YELLOW	5 1/2 (140) C-C FROM SKIP-DASH CENTERLINE 11 (280) C-C OMIT SKIP-DASH CENTERLINE BETWEEN
LANE LINES	4 (100) 5 (125) ON FREEWAYS	SKIP-DASH SKIP-DASH	WHITE WHITE	10' (3 m) LINE WITH 30' (9 m) SPACE
DOTTED LINES (EXTENSIONS OF CENTER, LANE OR TURN LANE MARKINGS)	SAME AS LINE BEING EXTENDED	SKIP-DASH	SAME AS LINE BEING EXTENDED	2' (600) LINE WITH 6' (1.8 m) SPACE
EDGE LINES	4 (100)	SOLID	YELLOW-LEFT WHITE-RIGHT	OUTLINE MOUNTABLE MEDIANS IN YELLOW; EDGE LINES ARE NOT USED NEXT TO BARRIER CURB
TURN LANE MARKINGS	6 (150) LINE; FULL SIZE LETTERS & SYMBOLS 18" (450mm)	SOLID	WHITE	SEE TYPICAL TURN LANE MARKING DETAIL
TWO WAY LEFT TURN MARKING	2 @ 4 (100) EACH DIRECTION 8' (2.4m) LEFT ARROW	SKIP-DASH AND SOLID IN PAIRS	YELLOW WHITE	10' (3 m) LINE WITH 30' (9 m) SPACE FOR SKIP-DASH 5 1/2 (140) C-C BETWEEN SOLID LINE AND SKIP-DASH LINE SEE TYPICAL TWO-WAY LEFT TURN MARKING DETAIL
CROSSWALK LINES (PEDESTRIAN) A. DIAGONALS (DIKE & EQUESTRIAN) B. LONGITUDINAL BARS (SCHOOL)	2 @ 6 (150) 12 (300) @ 45° 12 (300) @ 90°	SOLID SOLID SOLID	WHITE WHITE WHITE	NOT LESS THAN 6' (1.8 m) APART 2' (600) APART 2' (600) APART SEE TYPICAL CROSSWALK MARKING DETAILS.
STOP LINES	24 (600)	SOLID	WHITE	PLACE 4' (1.2 m) IN ADVANCE OF AND PARALLEL TO CROSSWALK IF PRESENT. OTHERWISE, PLACE AT DESIRED STOPPING POINT. PARALLEL TO CROSSROAD CENTERLINE, WHERE POSSIBLE
PAINTED MEDIANS	2 @ 4 (100) WITH 12 (300) DIAGONALS @ 45° NO DIAGONALS USED FOR 4' (1.2 m) WIDE MEDIANS	SOLID	YELLOW; TWO WAY TRAFFIC WHITE; ONE WAY TRAFFIC	11 (280) C-C FOR THE DOUBLE LINE SEE TYPICAL PAINTED MEDIAN MARKING.
GORE MARKING AND CHANNELIZING LINES	8 (200) WITH 12 (300) DIAGONALS @ 45°	SOLID	WHITE	DIAGONALS: 15' (4.5 m) C-C (LESS THAN 30MPH (50 km/h)) 20' (6 m) C-C (30MPH (50 km/h) TO 45MPH (70 km/h)) 30' (9 m) C-C (OVER 45MPH (70 km/h))
RAILROAD CROSSING	24 (600) TRANSVERSE LINES; "RR" IS 6' (1.8 m) LETTERS; 16 (400) LINE FOR "X"	SOLID	WHITE	SEE STATE STANDARD 780001 AREA OF: "RR"=3.6 SQ. FT. (0.33 m²) EACH "X"=94.0 SQ. FT. (8.70 m²)
SHOULDER DIAGONALS	12 (300) @ 45°	SOLID	WHITE - RIGHT YELLOW - LEFT	50' (15 m) C-C (LESS THAN 30MPH (50 km/h)) 75' (25 m) C-C (30 MPH (50 km/h) TO 45MPH (70 km/h)) 150' (45 m) C-C (OVER 45MPH (70 km/h))

FOR FURTHER DETAILS ON PAVEMENT MARKING REFER TO STANDARD SPECIFICATIONS FOR ROAD AND BRIDGE CONSTRUCTION AND STATE STANDARD 780001.

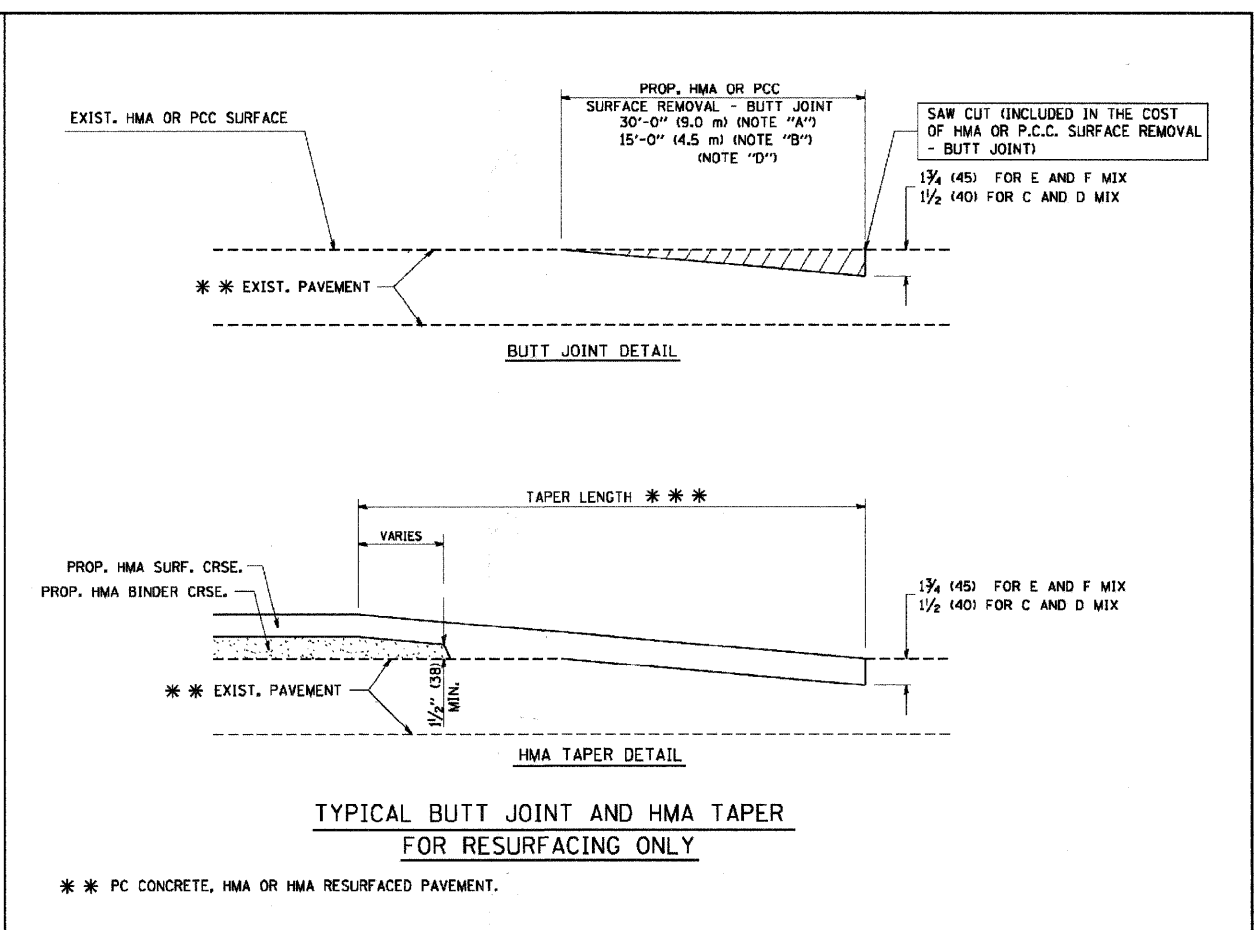
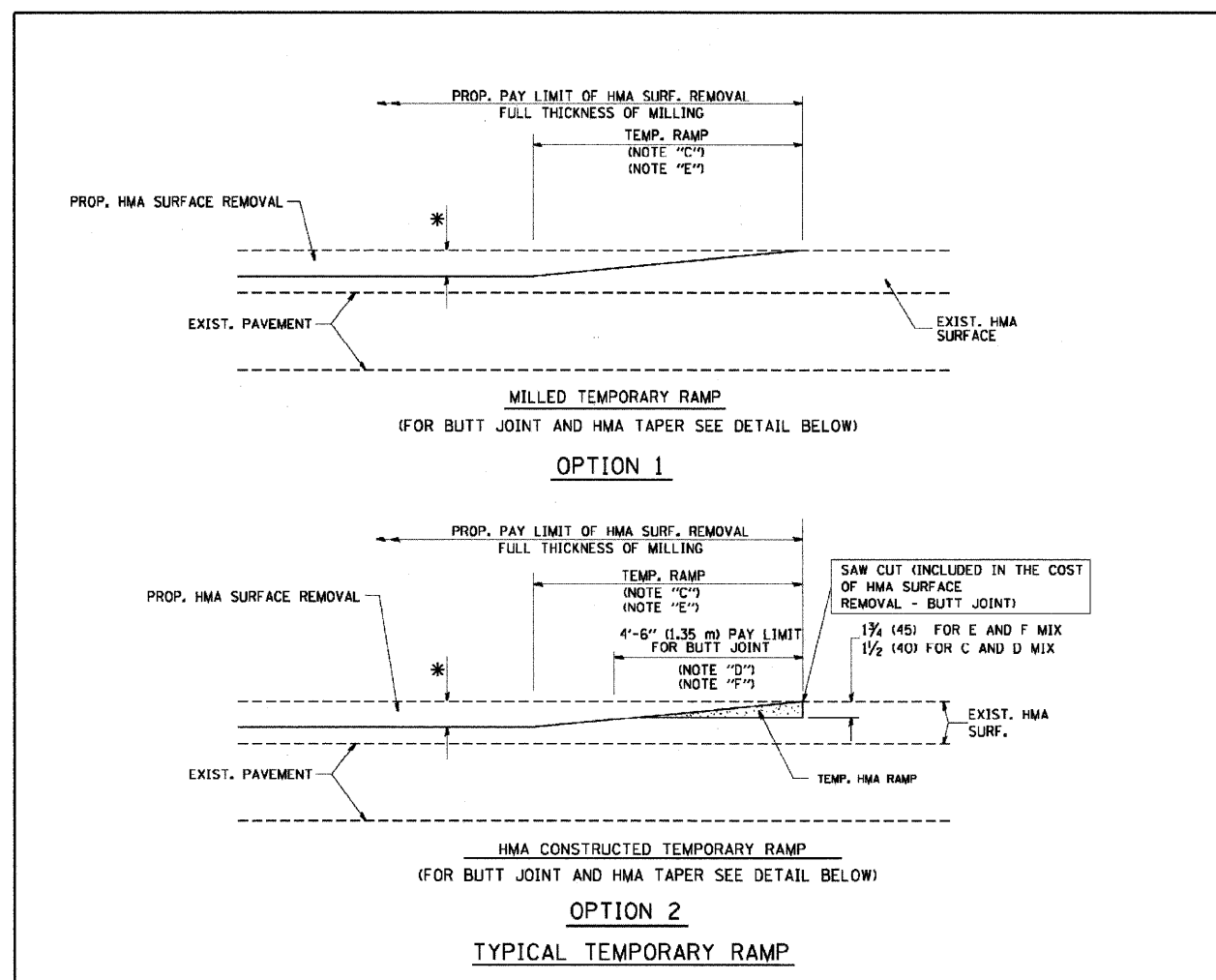
All dimensions are in inches (millimeters) unless otherwise shown.

DESIGNED	EVERS	REVISION	T. RAMMACHER 10-27-94
DRAWN	-	REVISION	-C. JUCCIUS 09-09-09
CHECKED	-	REVISION	-
DATE	03-19-90	REVISION	-

STATE OF ILLINOIS
DEPARTMENT OF TRANSPORTATION

DISTRICT ONE		F.A.U. RTE.	SECTION	COUNTY	TOTAL SHEETS	SHEET NO.
TYPICAL PAVEMENT MARKINGS		TC-13				
SCALE: NONE	SHEET NO. 1 OF 1 SHEETS	STA.	TO STA.		CONTRACT NO.	
		FED. ROAD DIST. NO. 1 ILLINOIS FED. AID PROJECT				

F.A.U. RTE.	SECTION	COUNTY	TOTAL SHEETS	SHEET NO.
2967	09-00018-00-RS	WILL	10	8
STA.		TO STA.		
ARA-9003 (431)		ILLINOIS FED. AID PROJECT		
CONTRACT NO. 63328				



NOTES

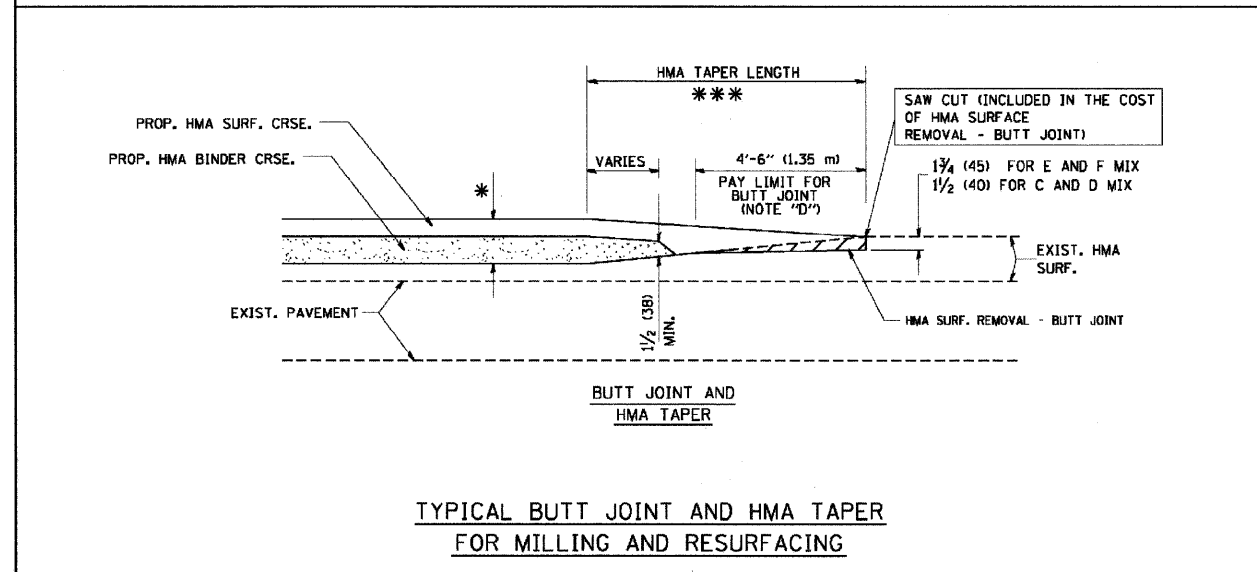
A: MAINLINE ROADWAYS AND MAJOR SIDE ROADS.
 B: MINOR SIDE ROADS.
 C: THE TEMP. RAMP SHALL BE CONSTRUCTED IMMEDIATELY UPON REMOVAL OF THE EXISTING HMA SURFACE.
 D: THE BUTT JOINT SHALL BE CONSTRUCTED IMMEDIATELY PRIOR TO PLACING THE PROPOSED HMA COURSES.
 E: TAPER THE TEMP. RAMP AT A RATE OF 3'-0" (900 mm) PER 1 INCH (25 mm) OF MILLING THICKNESS.
 F: INSTALLATION AND REMOVAL OF THE 4'-6" (1.35 m) TEMP. RAMP IS INCLUDED IN COST OF HMA SURFACE REMOVAL - BUTT JOINT
 G: SEE ARTICLE 406.08 AND 406.14 OF THE STANDARD SPECIFICATIONS FOR "HMA AND/OR PCC SURFACE REMOVAL, BUTT JOINT".

* SEE TYPICAL SECTIONS FOR MILLING THICKNESS.

*** 20'-0" (6.1 m) PER 1 (25) RESURFACING (NOTE "A")
 10'-0" (3.0 m) PER 1 (25) RESURFACING (NOTE "B")

BASIS OF PAYMENT:
 THE BUTT JOINT WILL BE PAID FOR AT THE CONTRACT UNIT PRICE PER SQUARE YARD (SQUARE METER) FOR "HOT-MIX ASPHALT SURFACE REMOVAL - BUTT JOINT" OR FOR "PORTLAND CEMENT CONCRETE SURFACE REMOVAL - BUTT JOINT".

ALL DIMENSIONS ARE IN INCHES (MILLIMETERS) UNLESS OTHERWISE SHOWN.



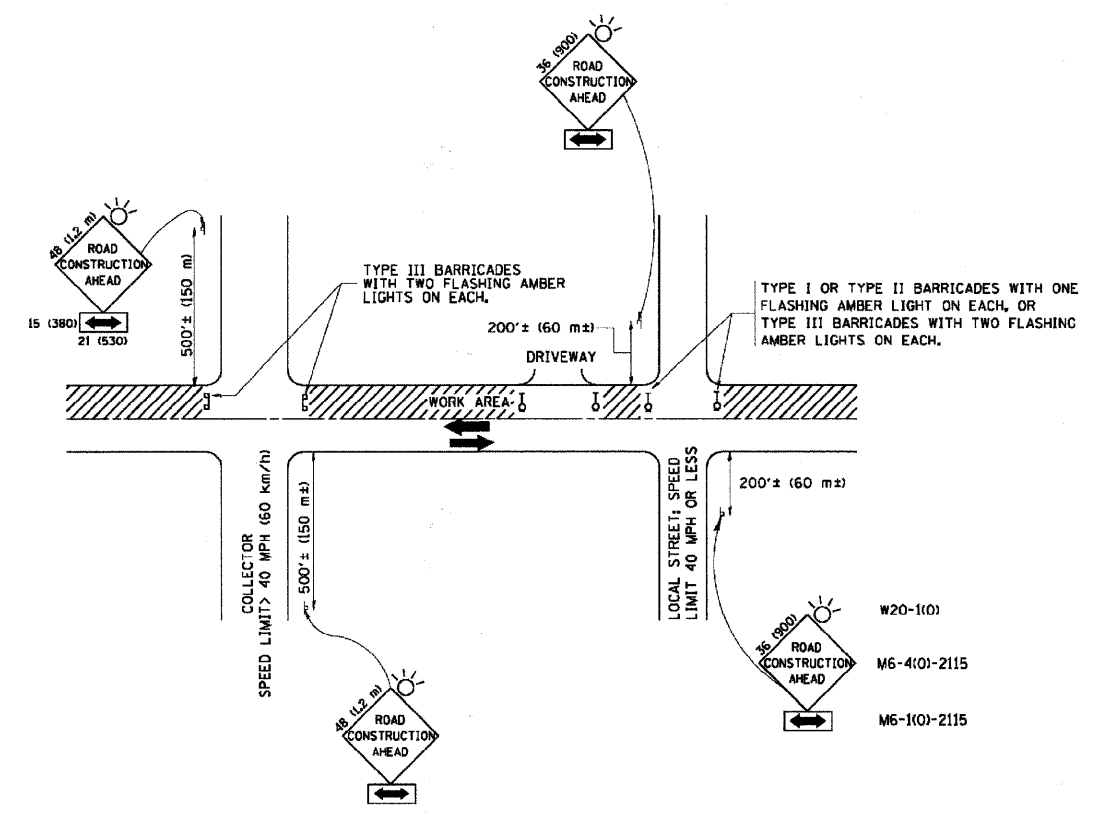
FILE NAME = W:\data\22x34\bc32.dgn	USER NAME = geglent	DESIGNED - M. DE YONG	REVISED - R. SHAH 10-25-94
		DRAWN -	REVISED - A. ABBAS 03-21-97
PLOT SCALE = 50.0000' / IN.		CHECKED -	REVISED - M. GOMEZ 04-06-01
PLOT DATE = 1/4/2000		DATE - 06-13-90	REVISED - R. BORO 01-01-07

**STATE OF ILLINOIS
DEPARTMENT OF TRANSPORTATION**

BUTT JOINT AND HMA TAPER DETAILS	
SCALE: NONE	SHEET NO. 1 OF 1 SHEETS
STA.	TO STA.

F.A.U. RTE.	SECTION	COUNTY	TOTAL SHEETS	SHEET NO.
	BD400-05	BD32		
CONTRACT NO.			FED. ROAD DIST. NO. 1 ILLINOIS FED. AID PROJECT	

F.A.U. RTE.	SECTION	COUNTY	TOTAL SHEETS	SHEET NO.
2967	09-00018-00-RS	WILL	10	9
STA.		TO STA.		
ARA-9003 (431)		ILLINOIS	FED. AID PROJECT	
CONTRACT NO. 63328				



TRAFFIC CONTROL AND PROTECTION FOR SIDE ROADS, INTERSECTIONS, AND DRIVEWAYS

NOTES:

- A. FOR NO LANE RESTRICTION ON THE SIDE ROAD OR DRIVEWAYS**
- SIDE ROAD WITH A SPEED LIMIT OF 40 MPH (60 km/h) OR LESS AS SHOWN ON THE DRAWING AND AS DIRECTED BY THE ENGINEER:
 - ONE ROAD CONSTRUCTION AHEAD SIGN 36 x 36 (900x900) WITH A FLASHER AND FLAG MOUNTED ON IT APPROXIMATELY 200' (60 m) IN ADVANCE OF THE MAIN ROUTE.
 - THE CLOSED PORTION OF THE MAIN ROUTE SHALL BE PROTECTED BY BLOCKING WITH TYPE I, TYPE II OR TYPE III BARRICADES, 1/3 OF THE CROSS SECTION OF THE CLOSED PORTION.
 - SIDE ROAD WITH A SPEED LIMIT GREATER THAN 40 MPH (60 km/h) AS SHOWN ON THE DRAWING AND AS DIRECTED BY THE ENGINEER:
 - ONE ROAD CONSTRUCTION AHEAD SIGN 48 x 48 (1.2 m x 1.2 m) WITH A FLASHER MOUNTED ON IT APPROXIMATELY 500' (150 m) IN ADVANCE OF THE MAIN ROUTE.
 - THE CLOSED PORTION OF THE MAIN ROUTE SHALL BE PROTECTED BY BLOCKING WITH TYPE III BARRICADES, 1/2 OF THE CROSS SECTION OF THE CLOSED PORTION.
 - WHEN THE SIDE ROAD LIES BETWEEN THE BEGINNING OF THE MAINLINE SIGNING AND THE WORK ZONE, A SINGLE HEADED ARROW (M6-1) SHALL BE USED IN LIEU OF THE DOUBLE HEADED ARROW (M6-4).
- B. FOR A LANE CLOSURE ON A SIDE ROAD OR DRIVEWAY:**
- USE APPLICABLE PORTIONS OF THE TYPICAL APPLICATION OF TRAFFIC CONTROL DEVICES (STD. 701501, STD. 701606 OR THE APPROPRIATE STANDARD). THE SPACING OF SIGNS AND BARRICADES SHALL BE ADJUSTED FOR FIELD CONDITIONS AS DIRECTED BY THE ENGINEER. THE DIRECTIONAL ARROW SHALL BE COVERED OR REMOVED WHEN NO LONGER CONSISTENT WITH THE SIDE ROAD LANE CLOSURE.
- C. ADVANCE WARNING SIGNS ARE TO BE OMITTED ON DRIVEWAY UNLESS OTHERWISE NOTED.**
- D. THE TRAFFIC CONTROL AND PROTECTION FOR SIDE ROADS, INTERSECTIONS, AND DRIVEWAYS SHALL BE INCIDENTAL TO THE COST OF SPECIFIED TRAFFIC CONTROL STANDARDS OR ITEMS.**

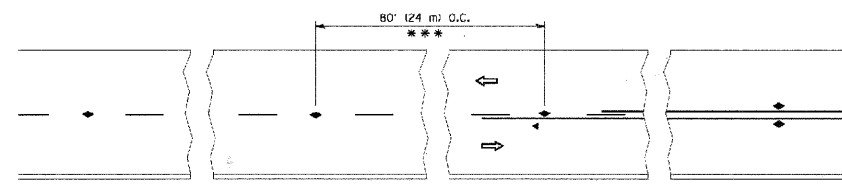
All dimensions are in millimeters (inches) unless otherwise shown.

FILE NAME M:\data\aid\22x31\td18.dgn	USER NAME gaglianobt	DESIGNED LHA	REVISED J. OBERLE 10-18-95
		DRAWN	REVISED A. HOUSEH 03-06-96
		CHECKED	REVISED A. HOUSEH 10-15-96
		DATE 06-89	REVISED T. RAMMACHER 01-06-00

**STATE OF ILLINOIS
DEPARTMENT OF TRANSPORTATION**

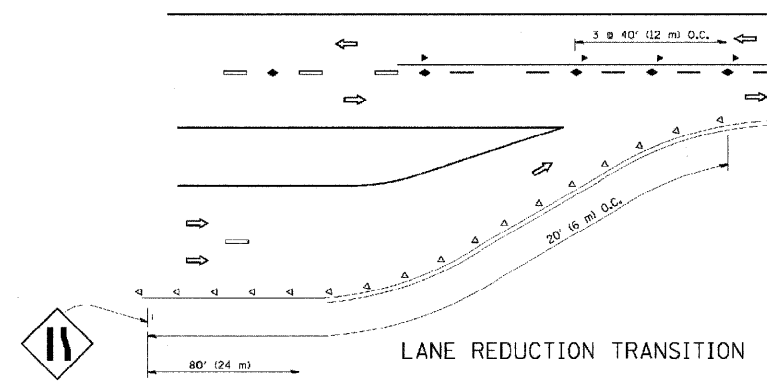
TRAFFIC CONTROL AND PROTECTION FOR SIDE ROADS, INTERSECTIONS, AND DRIVEWAYS		F.A.U. RTE.	SECTION	COUNTY	TOTAL SHEETS	SHEET NO.
SCALE: NONE	SHEET NO. 1 OF 1 SHEETS	STA.	TO STA.	TC-10 CONTRACT NO.		
FED. ROAD DIST. NO. 1 (ILLINOIS) FED. AID PROJECT						

F.A.U. RTE.	SECTION	COUNTY	TOTAL SHEETS	SHEET NO.
2967	09-00018-00-RS	WILL	10	10
STA.	TO STA.			
ARA-9003 (431)	ILLINOIS	FED. AID PROJECT		
CONTRACT NO. 63328				

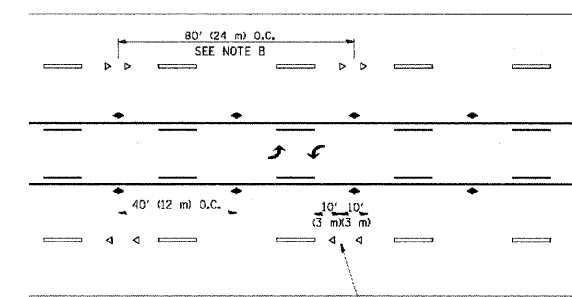


*** REDUCE TO 40' (12 m) O.C. ON CURVES WITH POSTED OR ADVISORY SPEED 45 M.P.H. (70 km/h) OR LESS.

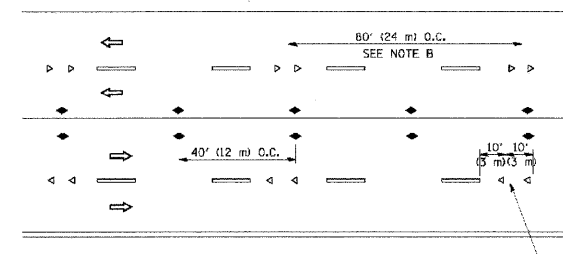
TWO-LANE/TWO-WAY



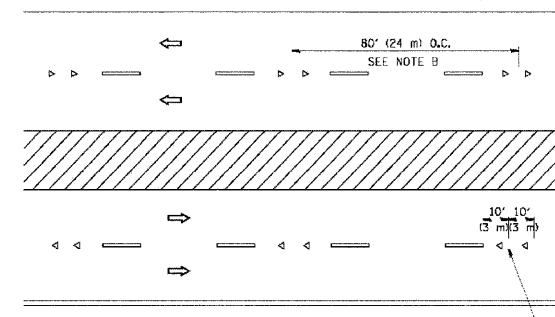
LANE REDUCTION TRANSITION



TWO-WAY LEFT TURN



MULTI-LANE/UNDIVIDED



MULTI-LANE/DIVIDED

GENERAL NOTES

1. MARKERS USED WITH DASHED LINES SHALL BE CENTERED IN THE GAP BETWEEN SEGMENTS.
2. MARKERS USED ADJACENT TO SOLID LINES SHALL BE OFFSET 2 TO 3 (50 TO 75) TOWARD TRAFFIC AS SHOWN.
3. MARKERS THROUGH TANGENTS LESS THAN 500' (150 m) IN LENGTH BETWEEN CURVES SHALL BE INSTALLED AT THE LESSER OF THE TWO CURVE SPACINGS.

SYMBOLS

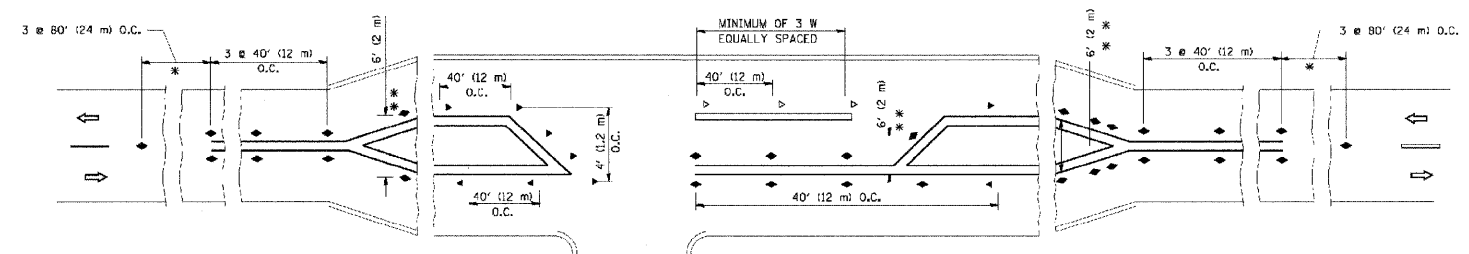
- YELLOW STRIPE
- WHITE STRIPE
- ◀ ONE-WAY AMBER MARKER
- ◀ ONE-WAY CRYSTAL MARKER (W/O)
- ◆ TWO-WAY AMBER MARKER

LANE MARKER NOTES

- A. USE DOUBLE LANE LINE MARKERS SPACED AS SHOWN.
- B. REDUCE TO 40' (12 m) O.C. ON CURVES WHERE ADVISORY SPEEDS ARE 10 M.P.H. (20 km/h) LOWER THAN POSTED SPEEDS.

DESIGN NOTES

1. DOUBLE LANE LINE MARKERS SHALL BE USED UNLESS SPECIFIED OTHERWISE.
2. EXCEPT AS SHOWN ON THE LANE REDUCTION TRANSITION AND FREEWAY EXIT RAMP DETAIL, MARKERS ARE NOT TO BE SPECIFIED ON RIGHT EDGE LINES.
3. THE EXACT MARKER LIMITS, SPACING, AND COLOR SHOULD BE INCLUDED IN THE PLANS.
4. MARKERS SHOULD NOT BE USED ALONGSIDE CURBS EXCEPT FOR EXTREMELY SHORT SECTIONS OF CURBS WHERE NOT MORE THAN TWO MARKERS WOULD BE INVOLVED.



LEFT TURN

* SEE TWO-LANE/TWO-WAY WHERE MARKERS CONTINUE
 ** WHERE THE MEDIAN WIDTH IS 6' (2 m) OR LESS USE TWO-WAY MARKERS.

All dimensions are in inches (millimeters) unless otherwise shown.

DESIGNED -	T. RAMMACHER 09-19-94
DRAWN -	T. RAMMACHER 03-12-99
CHECKED -	T. RAMMACHER 01-06-09
DATE -	C. JUCIUS 09-09-09

STATE OF ILLINOIS
 DEPARTMENT OF TRANSPORTATION

TYPICAL APPLICATIONS			
RAISED REFLECTIVE PAVEMENT MARKERS (SNOW-PLOW RESISTANT)			
SCALE: NONE	SHEET NO. 1 OF 1 SHEETS	STA.	TO STA.

F.A.U. RTE.	SECTION	COUNTY	TOTAL SHEETS	SHEET NO.
TC-11		CONTRACT NO.		
FED. ROAD DIST. NO. 1 ILLINOIS FED. AID PROJECT				