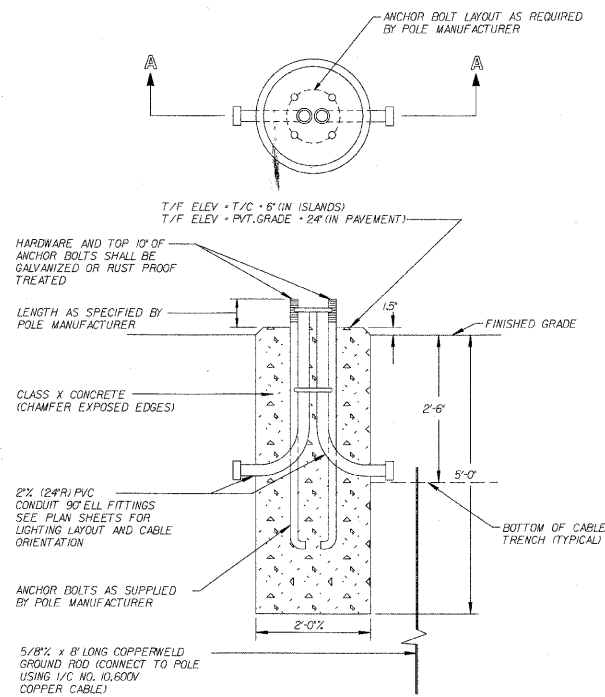


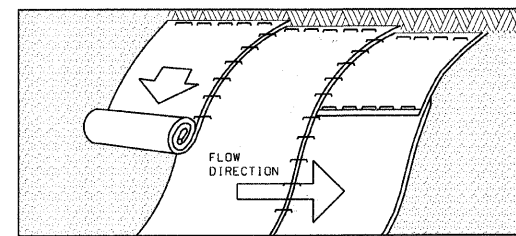
CAP NOTES

1. REMOVE CONCRETE AS REQUIRED FOR MINIMUM CAP
2. ATTACH ANCHOR BOLT EXTENSION TO EXISTING ANCHOR BOLT AND WELD IN PLACE
3. FOUNDATION EXTENSION SHALL BE FORMED
4. RESET POLE AFTER CONCRETE HAS CURED
5. RECONNECT ELECTRICAL POWER AND GROUND

LIGHT POLE FOUNDATION EXTENSION



**SECTION A-A
LIGHT POLE FOUNDATION**



SLOPE INSTALLATION

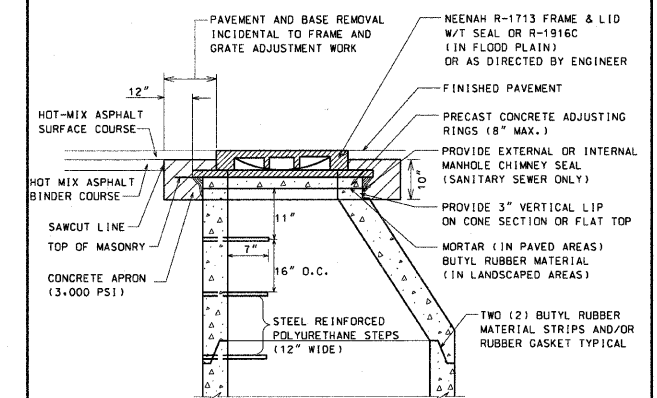
NOTES:

1. PREPARE SOIL BEFORE INSTALLING BLANKETS, INCLUDING APPLICATION OF LIME, FERTILIZER, AND SEED.
2. BEGIN AT THE TOP OF THE SLOPE (OR CHANNEL) BY ANCHORING THE BLANKET IN A 6" DEEP X 6" WIDE TRENCH. BACKFILL AND COMPACT THE TRENCH AFTER STAPLING.
3. ROLL THE BLANKETS DOWN (STARTING AT DOWNSTREAM PROCEEDING UPSTREAM) HORIZONTALLY ACROSS THE SLOPE.
4. THE EDGES OF PARALLEL BLANKETS MUST BE STAPLED WITH AN APPROXIMATE (MIN) 4" OVERLAP.
5. WHEN BLANKETS MUST BE SPLICED DOWN THE SLOPE, PLACE BLANKETS END OVER END (SHINGLE STYLE) WITH APPROXIMATELY A (MIN) 6" OVERLAP. USE A DOUBLE ROW OF STAGGERED STAPLES 4" APART TO SECURE BLANKETS.
6. IN HIGH FLOW CHANNEL APPLICATIONS, A STAPLE CHECK SLOT IS RECOMMENDED AT 30 TO 40 FOOT INTERVALS. USE A ROW OF STAPLES 4" APART OVER ENTIRE WIDTH OF THE CHANNEL. PLACE A SECOND ROW 4" BELOW THE FIRST ROW IN A STAGGERED PATTERN.
7. THE TERMINAL END OF THE BLANKETS MUST BE ANCHORED IN A 6" DEEP X 6" WIDE TRENCH. BACKFILL AND COMPACT THE TRENCH AFTER STAPLING.

NOT TO SCALE

EROSION CONTROL BLANKET DETAIL

REVISED:01-01-09



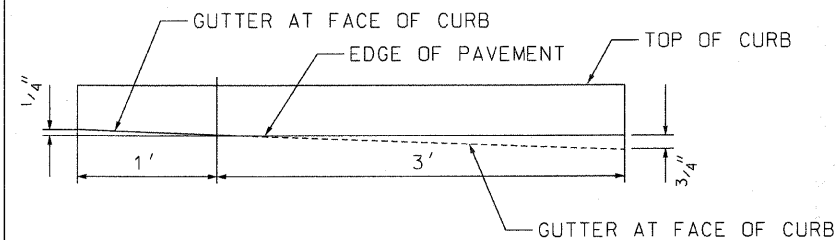
NOTE:

THE REQUIRED MANHOLE FRAME AND GRATE ADJUSTMENTS, DUE TO THE PAVEMENT RESURFACING, INCLUDING POURING OF CONCRETE APRON, SHALL BE PERFORMED BEFORE PLACING HOT-MIX ASPHALT SURFACE COURSE.

NOT TO SCALE

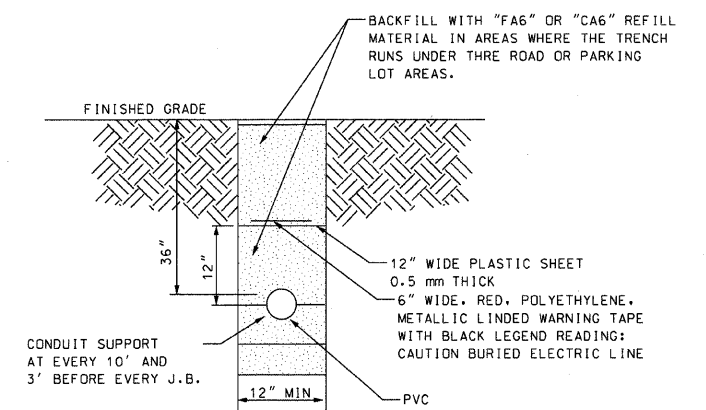
STRUCTURE FRAME & GRATE ADJUSTMENT DETAIL

REVISED:01-01-09



TRANSITION DETAIL FROM REVERSE PITCH TO STANDARD PITCH CURB AND GUTTER (B6.12)

NOT TO SCALE



CONDUIT TRENCH DETAIL

NOT TO SCALE

PLANS PREPARED BY: 	SURVEY - DJG	DESIGNED - DJG	REVISED - 10/05/09 PER BLRS
	UTILITIES - JC	DRAWN - DJG	REVISED -
	CHECKED - DJG	CHECKED - LVA	REVISED -
	DATE - 04-23-09	DATE - 09-17-09	REVISED -

**VILLAGE OF GLENVIEW
PROJECT E 08-56**

**STATE OF ILLINOIS
DEPARTMENT OF TRANSPORTATION**

SCALE: NONE SHEET NO. 21 OF 24 SHEETS

F.A. RTE.	SECTION	COUNTY	TOTAL SHEETS	SHEET NO.
NA	08-00169-00-PK	COOK	24	21
CONTRACT NO. 63360			ILLINOIS FED. AID PROJECT	