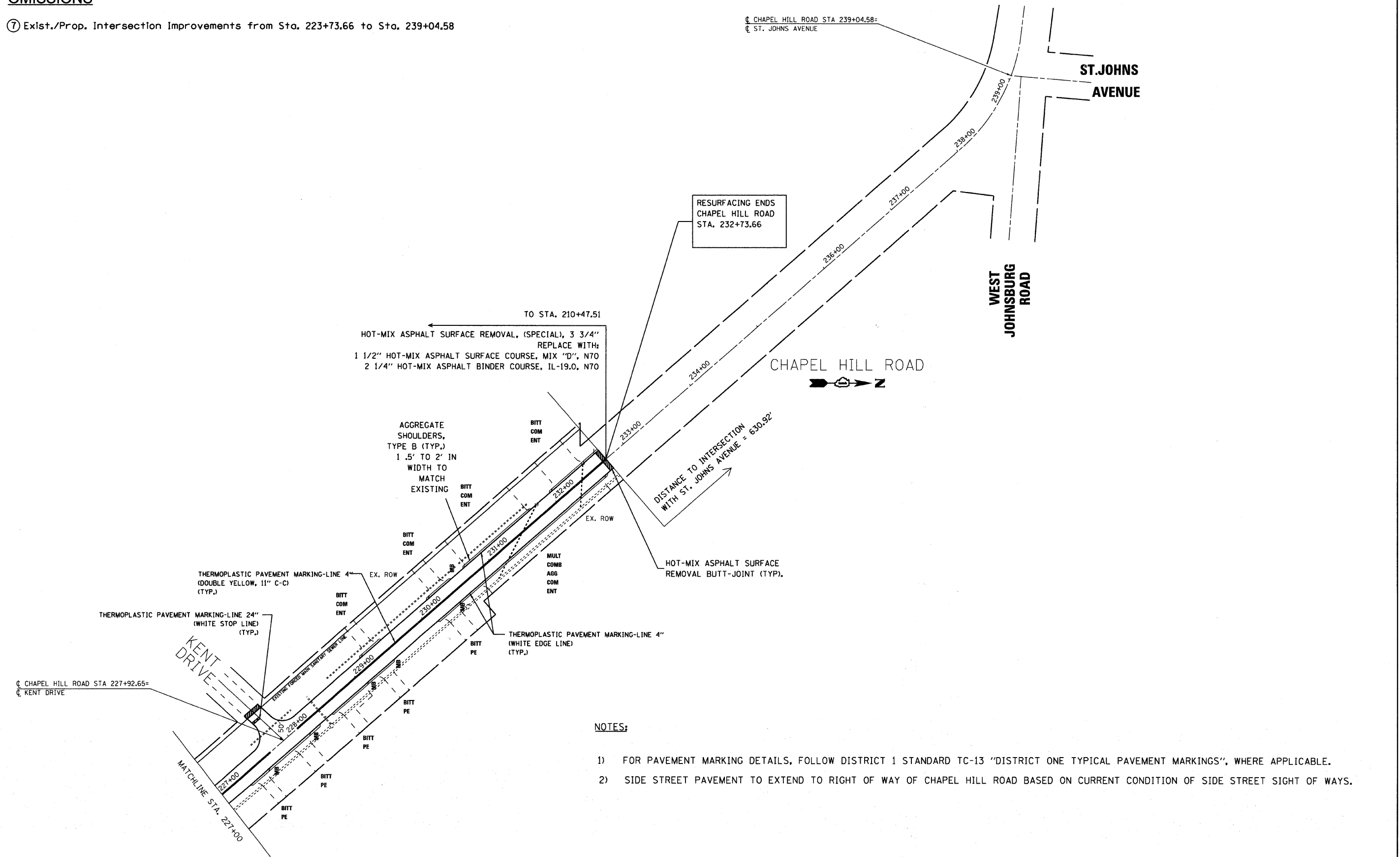


**OMISSIONS**

⑦ Exist./Prop. Intersection Improvements from Sta. 223+73.66 to Sta. 239+04.58



**NOTES:**

- 1) FOR PAVEMENT MARKING DETAILS, FOLLOW DISTRICT 1 STANDARD TC-13 "DISTRICT ONE TYPICAL PAVEMENT MARKINGS", WHERE APPLICABLE.
- 2) SIDE STREET PAVEMENT TO EXTEND TO RIGHT OF WAY OF CHAPEL HILL ROAD BASED ON CURRENT CONDITION OF SIDE STREET SIGHT OF WAYS.

FILE NAME =	USER NAME = #USER*	DESIGNED -	REVISED -	<b>McHENRY COUNTY DIVISION OF TRANSPORTATION CHAPEL HILL ROAD IMPROVEMENTS</b>	<b>PROPOSED PLAN</b>			F.A.U. RTE.	SECTION	COUNTY	TOTAL SHEETS	SHEET NO.
#FILE#		DRAWN -	REVISED -		SCALE: 1"=50'	SHEET NO. 10 OF 10 SHEETS	STA. 227+00 TO STA. 240+00	0167	09-00366-00-RS	McHENRY	19	14
		CHECKED -	REVISED -					CONTRACT NO. 63380				
		DATE -	REVISED -		FED. ROAD DIST. NO. ILLINOIS FED. AID PROJECT							