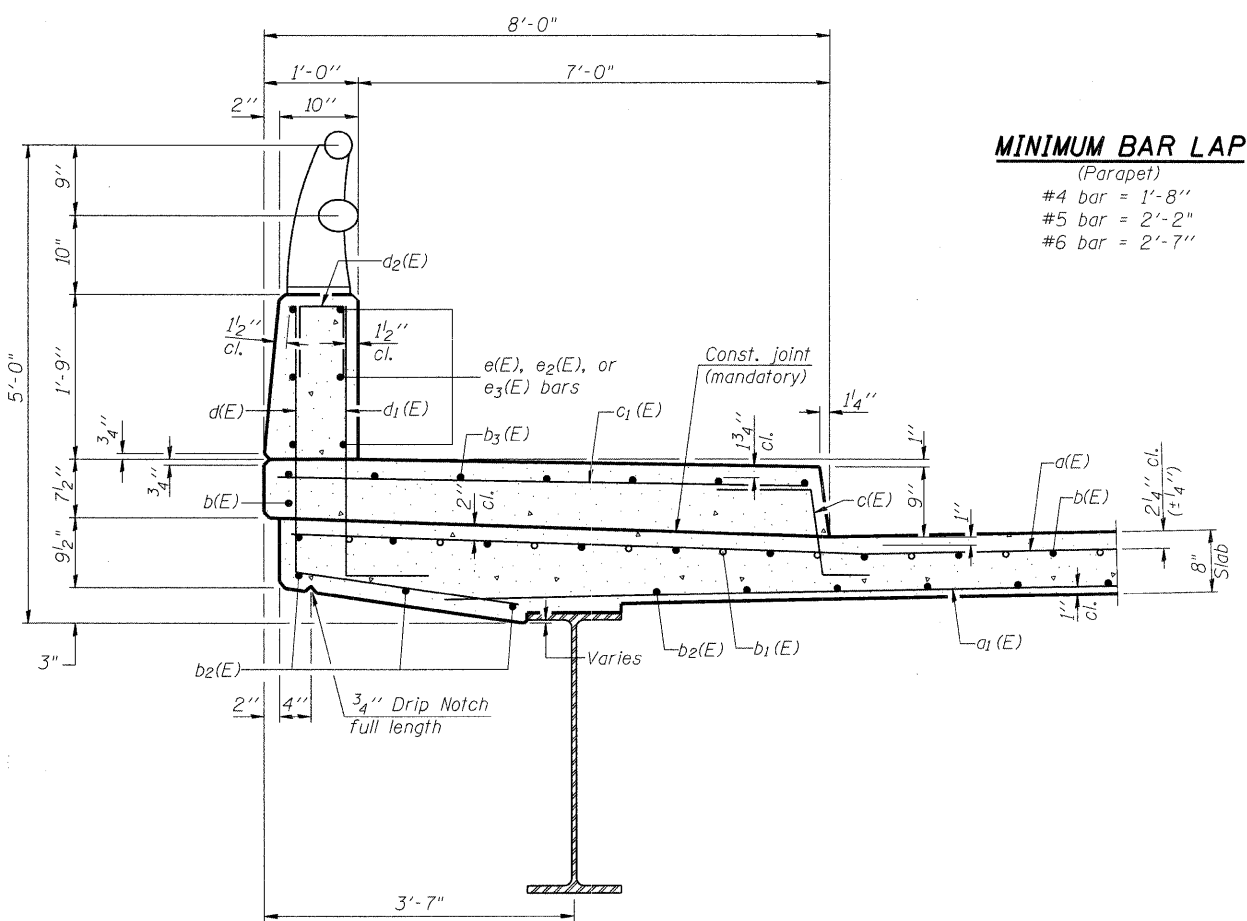


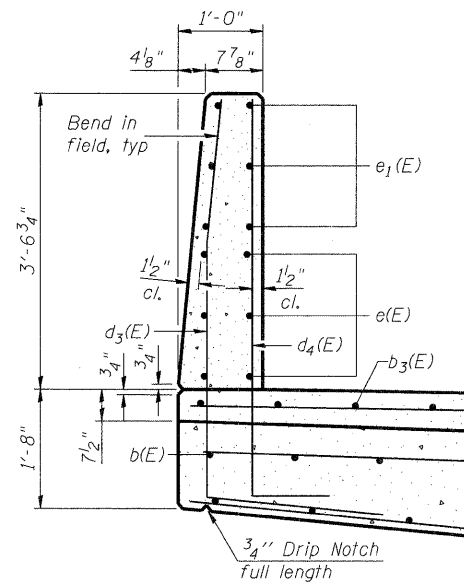
**INSIDE ELEVATION OF PARAPET**

\* Trim bars to fit



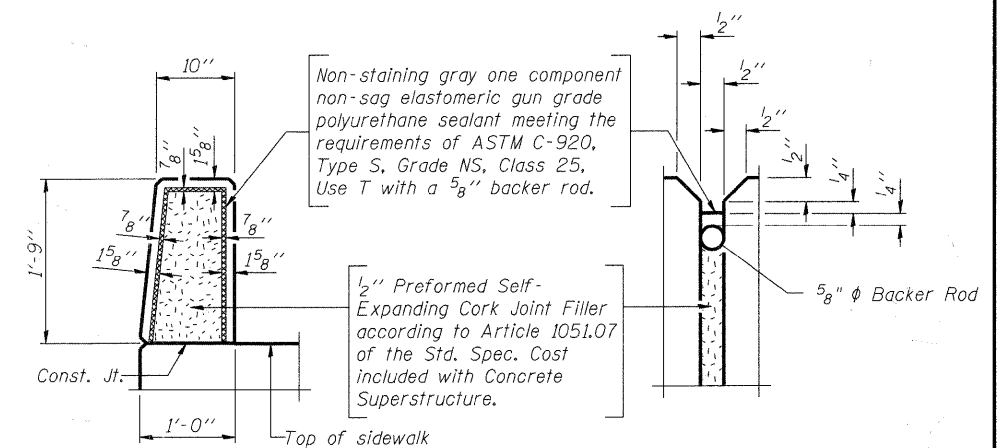
**MINIMUM BAR LAP**

- (Parapet)
- #4 bar = 1'-8"
- #5 bar = 2'-2"
- #6 bar = 2'-7"



**SECTION C-C**

See Section Thru Sidewalk for additional details.



**PARAPET JOINT DETAILS**

**SUPERSTRUCTURE DETAILS**

THOMPSON ROAD  
OVER NIPPERSINK CREEK  
SECTION NO. 06-00005-00-BR  
McHENRY COUNTY  
STATION 206+30.48  
STRUCTURE NO. 056-6006

DATE: 11/18/09

DESIGNED	MGH/JPG
CHECKED	KMA
DRAWN	WJH
CHECKED	RGD

**SECTION THRU SIDEWALK**

**SEC GROUP, INC.**  
 Illinois Professional Design Firm # 184-000108  
 • Engineering • Surveying • Planning • Landscape Architecture  
 420 N. Front Street, McHenry, IL 60050  
 T. 815.385.1778 F. 815.385.1781  
 www.secgroupinc.com  
 • McHenry, IL • Yorkville, IL • New Lenox, IL • Chicago, IL

SHEET NO. <b>S-12</b>	F.A.U. RTE.	SECTION	COUNTY	TOTAL SHEETS	SHEET NO.
	4081	06-00005-00-BR	McHENRY	45	23
<b>S-25</b> SHEETS		CONTRACT NO. 63409			
FED. ROAD DIST. NO. 1 ILLINOIS FED. AID PROJECT					

FILE NAME: 060563-S06101.dwg, 20/2009  
 PLOT DRIVER: pnf.plt  
 PEN TABLE: standard-trans.tbl