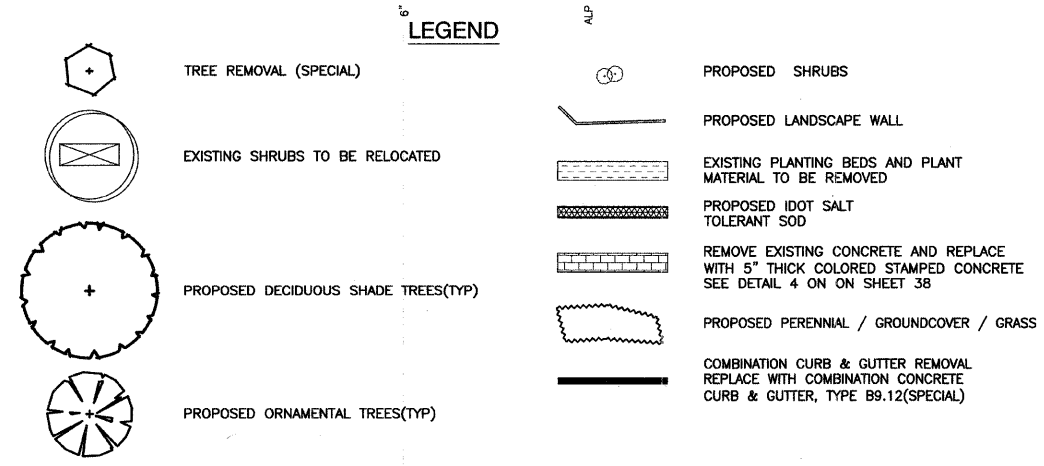
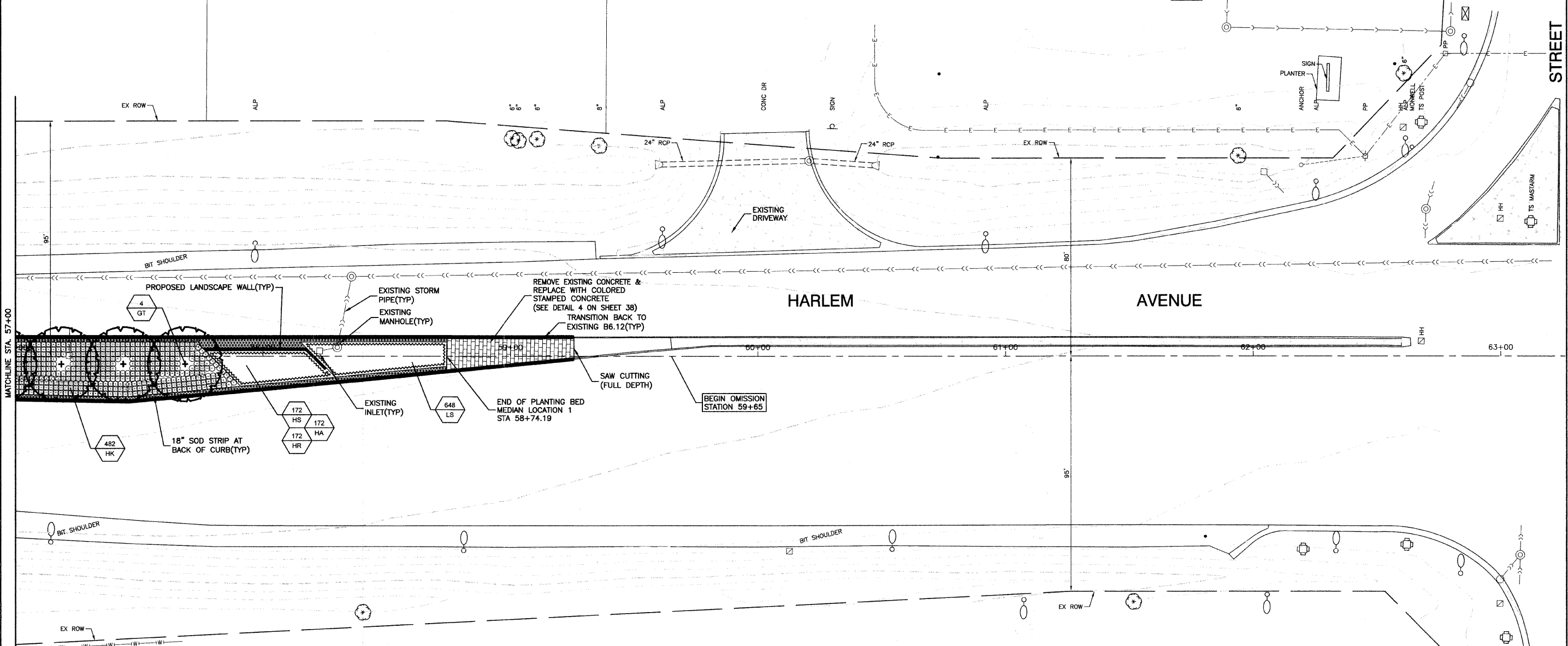
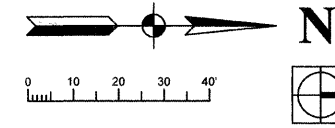


SECTION 1, TOWNSHIP 35, RANGE 12
SECTION 6, TOWNSHIP 35, RANGE 13



NOTES:
ALL PLANTINGS SHALL FOLLOW IDOT BUREAU OF DESIGN & ENVIRONMENT MANUAL - CHAPTER 59 - LANDSCAPE DESIGN AND EROSION CONTROL 59-7.09 PLANTING IN URBANIZED AREA FOR SIGHT DISTANCES.
ALL AREAS TO BE LANDSCAPED SHALL BE EXCAVATED TO THE DEPTH APPROPRIATE FOR THE PROPOSED PLANTINGS. NO SOD SHALL REMAIN IN NEW PLANTING AREAS.
PLANT QUANTITIES SHOWN ON DRAWINGS ARE APPROXIMATE. CONTRACTOR SHALL PROVIDE PLANT MATERIALS SUFFICIENT TO COVER AREAS SHOWN ON PLANS AT THE SPACINGS INDICATED.
ANY AREAS OUTSIDE OF THE LANDSCAPE BEDS THAT ARE DISTURBED SHALL BE REPLACED IN KIND.
FOR LANDSCAPE PLANTING DETAILS SEE SHEETS 36 & 37.
FOR PROPOSED LANDSCAPE WALL DETAILS SEE SHEET 38.
NO PLANTING SHALL BE CLOSER THAN 18" FROM BACK OF MEDIAN CURB. NO TREES SHALL BE CLOSER THAN 4' FROM BACK OF MEDIAN CURB.
FOR ADDITIONAL PLANTING NOTES SEE SHEET 36.
FOR PLANT SCHEDULE SEE SHEET 2.
FOR CONCRETE DETAILS SEE SHEET 38.

BENCH MARK:172
SQUARE CUT ON W. FACE OF CONC BASE OF ALP, 2ND POLE S. OF I-80 EXIT RAMP TO NORTHBOUND HARLEM AVENUE ELEVATION=704.09

FILE NAME = 09463-PLAN-01 - P10	USER NAME =	DESIGNED -- SDG	REVISED --
		CHECKED -- JSP	REVISED --
	PLOT SCALE =	DRAWN -- PS	REVISED --
	PLOT DATE = 11-30-09	CHECKED -- AG	REVISED --

STATE OF ILLINOIS
DEPARTMENT OF TRANSPORTATION

HARLEM AVENUE BEAUTIFICATION - STREETSCAPING LANDSCAPING PLAN		F.A.P. RTE. 348	SECTION 09-00108-00-LS	COUNTY COOK	TOTAL SHEETS 38	SHEET NO. 6
SCALE: 1"=20'		SHEET NO. 6 OF 38 SHEETS		STA. TO STA.	CONTRACT NO. 63412	
		FED. ROAD DIST. NO. 1 ILLINOIS		FED. AID PROJECT ARA-00D1(809)		