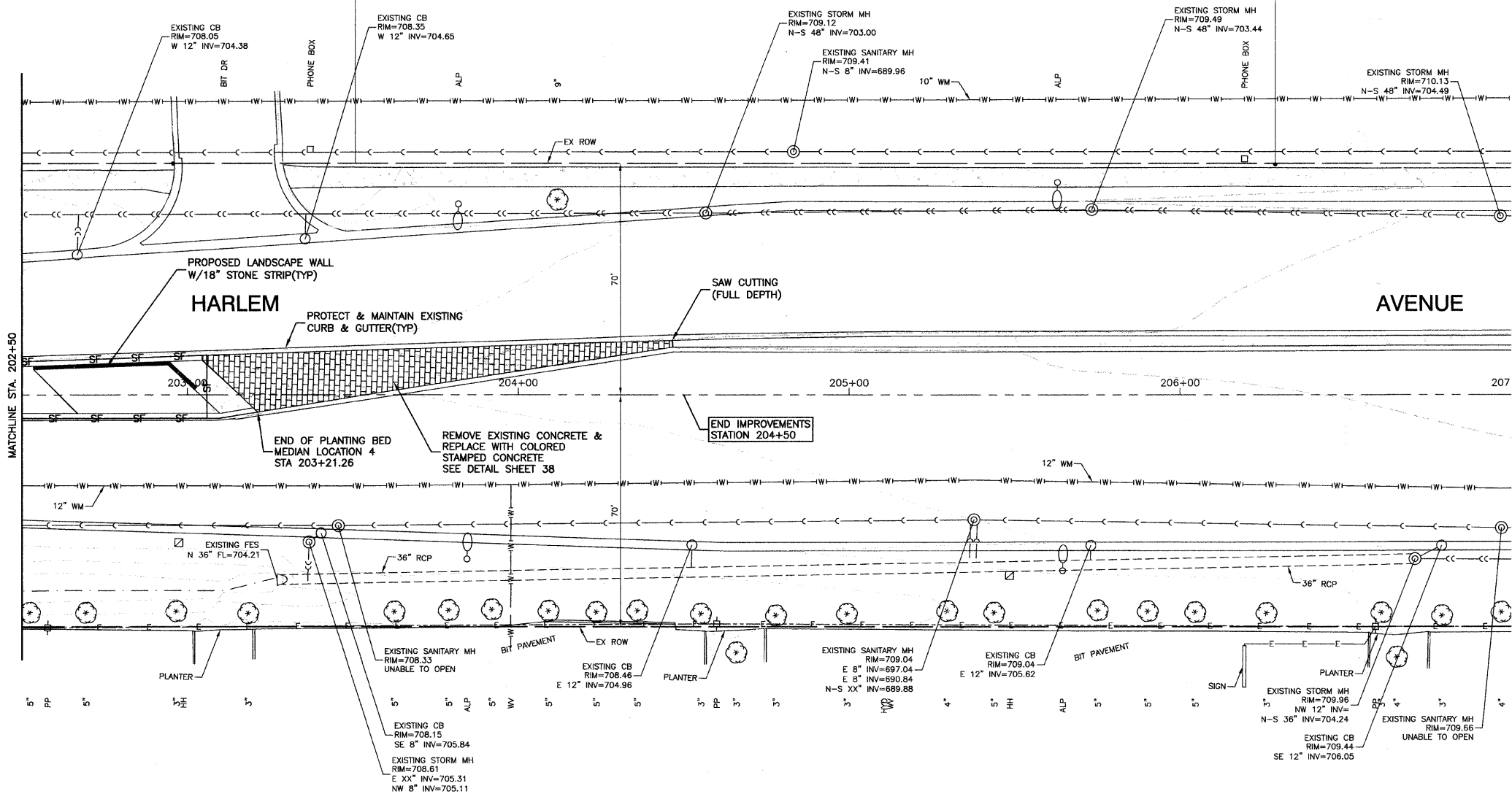
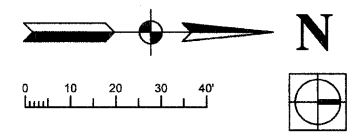


SECTION 24, TOWNSHIP 36, RANGE 12  
SECTION 19, TOWNSHIP 36, RANGE 13



**LEGEND**

— SF —	PERIMETER EROSION BARRIER
◊	INLET FILTER

NOTES:  
PROPOSED PLANTINGS NOT SHOWN FOR CLARITY.  
SEE LANDSCAPING PLANS.

**BENCH MARK:35**  
SQUARE CUT ON SW CONC BASE OF ALP, 3RD POLE N. OF  
167TH STREET, EAST SIDE OF HARLEM AVENUE  
ELEVATION=702.30

FILE NAME = 09493-PLAN-01 - 023	USER NAME =	DESIGNED — SDG	REVISED —	<b>STATE OF ILLINOIS</b> <b>DEPARTMENT OF TRANSPORTATION</b>	<b>HARLEM AVENUE</b> <b>BEAUTIFICATION - STREETSCAPING</b> <b>DRAINAGE AND EROSION CONTROL PLAN</b>	F.A.P. RTE.	SECTION	COUNTY	TOTAL SHEETS	SHEET NO.	
	PLOT SCALE =	CHECKED — JSP	REVISED —			348	09-00108-00-LS	COOK	38	24	
PLOT DATE = 11-30-09	DRAWN — PS	REVISED —		SCALE: 1"=20'	SHEET NO. 24 OF 38 SHEETS	STA.	TO STA.	CONTRACT NO. 63412			
	CHECKED — AG	REVISED —				FED. ROAD DIST. NO. 1	ILLINOIS	FED. AID PROJECT	ARA-00D1(809)		