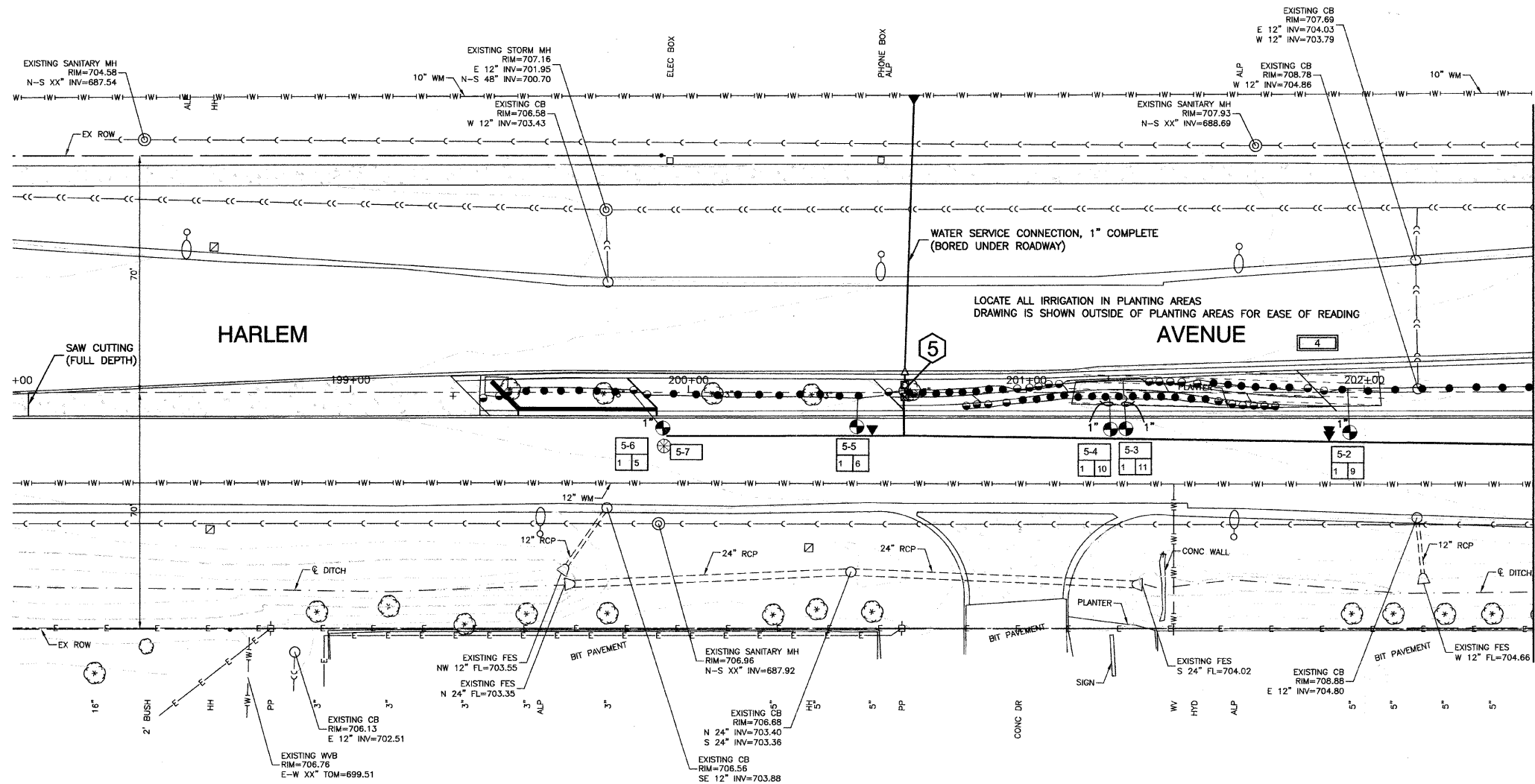
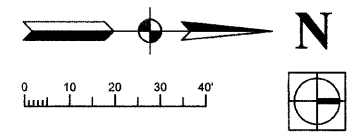


SECTION 24, TOWNSHIP 36, RANGE 12  
SECTION 19, TOWNSHIP 36, RANGE 13



**LEGEND**

- 1 HUNTER XCH XC HYBRID CONTROLLER - BATTERY OPERATED OUTDOOR CONTROLLER WITH RAIN CLICK \*OR ENGINEER APPROVED EQUAL. COORDINATE WITH ENGINEER FOR MOUNTING LOCATION. INSTALL AND GROUND TO MANUFACTURER'S RECOMMENDATIONS AND DETAILS. CONTROLLER IS TO BE LOCATED IN A KS-M2 ENCLOSURE BY BPOI \*OR ENGINEER APPROVED EQUAL. COLOR TO BE DARK GREEN. INSTALL ENCLOSURE PER MANUFACTURER'S RECOMMENDATIONS. CONTRACTOR TO VERIFY ENCLOSURE SIZE.
  - CL 160 PVC PIPE - MAINLINE, SEE PLAN FOR SIZES
  - 1" & 1.5" PE HD100 PIPE
  - HUNTER INSTITUTIONAL SPRAY WITH CHECK VALVE
    - 12" PRO SPRAY NOZZLES FULL CIRCLE \*OR ENGINEER APPROVED EQUAL
    - NOZZLE RADIUS VARIES
  - HUNTER INSTITUTIONAL SPRAY WITH CHECK VALVE
    - 12" PRO SPRAY NOZZLES PART CIRCLE \*OR ENGINEER APPROVED EQUAL
    - NOZZLE RADIUS VARIES
  - HUNTER HQ-44RC SERIES QUICK COUPLER
    - \*OR ENGINEER APPROVED EQUAL
  - EXTRA WIRE DROP, LABEL AND LOCATE IN ADJACENT VALVE BOX.
  - ISOLATION GATE VALVE - SIZE TO PIPE
  - HUNTER PGV ELECTRIC VALVES \*OR ENGINEER APPROVED EQUAL
    - SIZE PER PLAN VALVES TO HAVE DC LATCHING SOLENOID.
  - BLOW OUT TAP WITH PLUG
  - RPZ BACKFLOW PREVENTER AND METER - PROVIDED BY THIS CONTRACTOR RPZ TO BE LOCATED IN A ARTIFICIAL ROCK ENCLOSURE. COLOR AND STYLE TO BE APPROVED. CONTRACTOR IS RESPONSIBLE TO ENSURE THAT THE BACKFLOW FITS IN THE ENCLOSURE. INSTALL PER MANUFACTURER'S RECOMMENDATIONS. METER TO BE INSTALLED IN VILLAGE APPROVED VAULT.
  - POINT OF CONNECTION - COORDINATE WITH ENGINEER & GENERAL CONTRACTOR IRRIGATION TAPS VARY. FOLLOW STATE AND LOCAL CODES FROM TAP THROUGH BACKFLOW PREVENTOR, METER AND SYSTEM.
- 
- CONTROLLER NUMBER  
STATION NUMBER
- 1 MEDIAN LOCATION
- 124 VALVE #  
1135 ZONE CPM  
VALVE SIZE
- 50 SYSTEM STATIC PRESSURE  
(NOTIFY OWNER IF PRESSURE IS LESS)
- CONTROLLER SIZING:
- 1 8 STATION
  - 2 4 STATION
  - 3 12 STATION
  - 4 12 STATION
  - 5 8 STATION
- PULSE WIRE COLOR CODE #16 GA. VALVE #
- |        |   |   |    |    |
|--------|---|---|----|----|
| RED    | 1 | 5 | 8  | 13 |
| YELLOW | 2 | 6 | 10 | 14 |
| ORANGE | 3 | 7 | 11 | 15 |
| BLUE   | 4 | 8 | 12 | 16 |
- WHITE - COMMON #16 GA.

NOTES:  
PROPOSED PLANTINGS NOT SHOWN FOR CLARITY.  
SEE LANDSCAPING PLANS.

**BENCH MARK:35**  
SQUARE CUT ON SW CONC BASE OF ALP, 3RD POLE N. OF  
167TH STREET, EAST SIDE OF HARLEM AVENUE  
ELEVATION=702.30

FILE NAME = 09493-PLAN-01 - IR22	USER NAME =	DESIGNED - SDG	REVISED -	<b>STATE OF ILLINOIS DEPARTMENT OF TRANSPORTATION</b>	<b>HARLEM AVENUE BEAUTIFICATION - STREETSCAPING IRRIGATION PLAN</b>		F.A.P. RTE.	SECTION	COUNTY	TOTAL SHEETS	SHEET NO.		
	PLOT SCALE =	CHECKED - JSP	REVISED -		348	09-00108-00-LS	COOK	38	33				
	PLOT DATE = 11-30-09	DRAWN - PS	REVISED -		SCALE: 1"=20'			SHEET NO. 33 OF 38 SHEETS		STA. TO STA.		CONTRACT NO. 63412	
		CHECKED - AG	REVISED -		FED. ROAD DIST. NO. 1 ILLINOIS		FED. AID PROJECT ARA-00D1(809)						