

STATE OF ILLINOIS
DEPARTMENT OF TRANSPORTATION
DIVISION OF HIGHWAYS

F.A.P. RTE.	SECTION	COUNTY	TOTAL SHEETS	SHEET NO.
363	08-00370-00-SP	KANE	32	1
FED. ROAD DIST. NO.	ILLINOIS	CONTRACT NO.	63416	

PLANS FOR PROPOSED FEDERAL AID HIGHWAY

**F.A.P. ROUTE 363 (FABYAN PARKWAY – C.H. 8)
 AT VAN NORTWICK AVENUE
 SECTION 08-00370-00-SP
 PROJECT NO: HSIP-9003 (056)
 SAFETY IMPROVEMENT
 KANE COUNTY
 JOB NO: C-91-510-08**

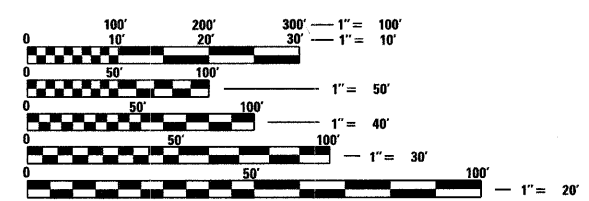


INDEX OF SHEETS

SHEET NO.	DESCRIPTION
1	COVER SHEET
2	GENERAL NOTES AND STANDARDS
3	SUMMARY OF QUANTITIES
4	SCHEDULE OF QUANTITIES - EARTHWORK AND DRAINAGE
5	EXISTING TYPICAL SECTIONS
6	PROPOSED TYPICAL SECTIONS
7	ALIGNMENT, TIES AND BENCHMARKS
8-10	SUGGESTED STAGES OF CONSTRUCTION
11	LANDSCAPING & EROSION CONTROL PLAN
12-15	PLAN & PROFILE
16-19	DRAINAGE AND UTILITIES
20	PAVEMENT MARKING PLAN
21	BD-01 DISTRICT 1 DETAIL, DRIVEWAY DETAILS - DISTANCE BETWEEN R.O.W. AND FACE OF CURB & EDGE OF SHOULDER >= 15' (4.5m)
22	BD-07 DISTRICT 1 DETAIL, DETAIL OF STORM SEWER CONNECTION TO EXISTING SEWER
23	BD-32 DISTRICT 1 DETAIL, BUTT JOINT AND HMA TAPER DETAILS
24	TC-10 DISTRICT 1 DETAIL, TRAFFIC CONTROL AND PROTECTION FOR SIDE ROADS, INTERSECTIONS, AND DRIVEWAYS
25	TC-13 DISTRICT 1 DETAIL, DISTRICT ONE TYPICAL PAVEMENT MARKINGS
26	TC-26 DISTRICT 1 DETAIL, DRIVEWAY ENTRANCE SIGNING
27	TC-11 DISTRICT 1 DETAIL, TYPICAL APPLICATIONS RAISED REFLECTIVE PAVEMENT MARKERS (SNOW-FLW RESISTANT)
28-32	CROSS SECTIONS

THIS PROJECT IS LOCATED IN THE CITY OF GENEVA AND THE CITY OF BATAVIA.

Call Before You Dig 800-4-A-DAVE Simply Call 811	48 HOURS BEFORE CONSTRUCTION
	SECTION(S): N.E. 1/4 SEC.16
	N.W. 1/4 SEC.15
	TOWNSHIP: 39 NORTH
	RANGE: 8 EAST OF 3RD P.M.

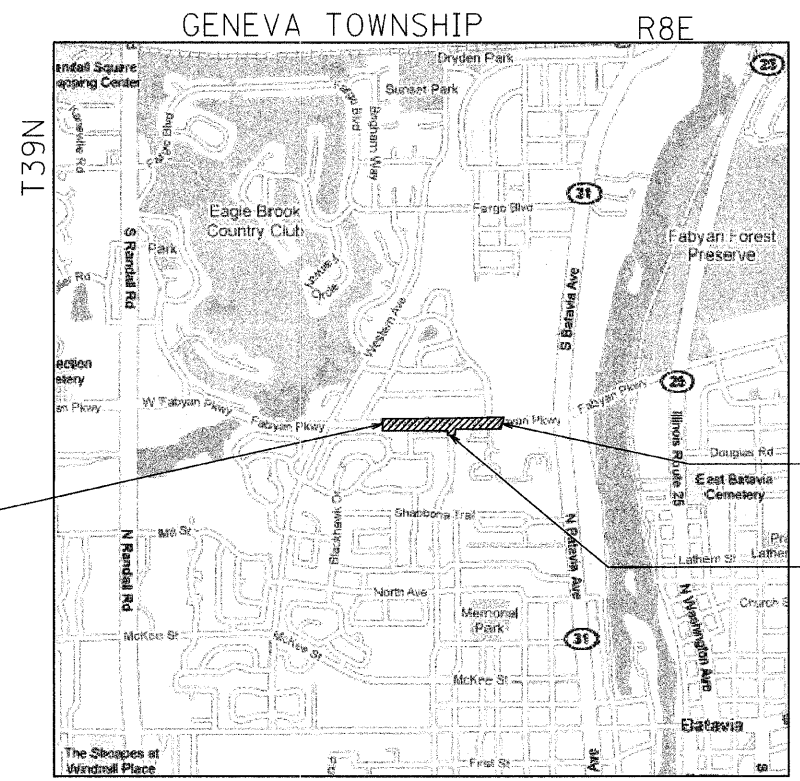


FULL SIZE PLANS HAVE BEEN PREPARED USING STANDARD ENGINEERING SCALES. REDUCED SIZED PLANS WILL NOT CONFORM TO STANDARD SCALES. IN MAKING MEASUREMENTS ON REDUCED PLANS, THE ABOVE SCALES MAY BE USED.

J.U.L.I.E.
 JOINT UTILITY LOCATION INFORMATION FOR EXCAVATION
 1-800-892-0123
 OR 811

PROJECT ENGINEER RDT
PROJECT MANAGER JAC

CONTRACT NO. 63416



IMPROVEMENT BEGINS
STA. 44+10.88

IMPROVEMENT ENDS
STA. 63+54.00

LIMIT OF CONSTRUCTION
VAN NORTWICK AVENUE
OFFSET 60.82' RT

LOCATION MAP SCALE: 1" = 1500'

GROSS LENGTH OF IMPROVEMENT: 1943.12 LIN. FT. = 0.3680 MILES
 EQUATIONS: NONE
 OMISSIONS: NONE
 NET LENGTH OF IMPROVEMENT: 1943.12 LIN. FT. = 0.3680 MILES

DESIGN DESIGNATION:
PRINCIPAL ARTERIAL

TRAFFIC DATA
 2009 ADT: 27,500
 2010 ADT: 28,000
 POSTED SPEED: 40 MPH
 DESIGN SPEED: 40 MPH



John A. Clark
 JOHN A. CLARK, P.E.
 NO. 062-055684
 EXP. DATE: 11/30/2011
 SHEETS 1-32

STATE OF ILLINOIS
 DEPARTMENT OF TRANSPORTATION
 DIVISION OF HIGHWAYS

APPROVED DECEMBER 7, 2009
[Signature]
 COUNTY ENGINEER, KANE COUNTY

PASSED DECEMBER 8, 2009
[Signature]
 DISTRICT ONE ENGINEER OF LOCAL ROADS & STREETS

RELEASING FOR BID
 BASED ON LIMITED
 REVIEW DECEMBER 15, 2009
[Signature]
 DEPUTY DIRECTOR OF HIGHWAYS, REGION ONE ENGINEER

STV Incorporated
 engineers/architects/scientists/construction managers
 200 W Monroe - Suite 1650
 Chicago, Illinois 60606
 (312) 553-0655
 FAX: (312) 553-0661

**PRINTED BY THE AUTHORITY
 OF THE STATE OF ILLINOIS**

FIELD ENGINEER: MARILIN SOLOMON 847-705-4407