

GENERAL STAGING NOTES

1. POSITIVE DRAINAGE SHALL BE MAINTAINED AT ALL TIMES.
2. USE AGGREGATE SURFACE COURSE TO PROVIDE TEMPORARY ACCESS AT DRIVEWAYS AS REQUIRED AND AT THE DIRECTION OF THE ENGINEER. THIS WORK WILL BE PAID AS TEMPORARY ACCESS (PRIVATE ENTRANCE). INSTALL TEMPORARY INFORMATION SIGNING AT DRIVEWAYS AS REQUIRED AND AT THE DIRECTION OF THE ENGINEER.
3. ACCESS TO CARRIAGE DRIVE, VAN NORTWICK AVENUE, ALLEN DRIVE AND RIVER ROCK ROAD MUST BE MAINTAINED AT ALL TIMES.
4. TEMPORARY TRAFFIC CONTROLS SHALL BE IN PLACE AT THE BEGINNING OF EACH STAGE AS SHOWN ON THE PLANS.
5. TO AVOID CONFLICTS WITH TEMPORARY AND NEW PAVEMENT MARKING, THE CONTRACTOR SHALL REMOVE EXISTING PAVEMENT MARKINGS WHERE REQUIRED AND AT THE DIRECTION OF THE ENGINEER.
6. TRAFFIC CONTROL SHALL CONFORM TO STANDARDS 701606, 701701, 701901 AND AS SHOWN ON THE PLANS.
7. FOR MULTILANE RESURFACING, STANDARDS 701606 AND AS SHOWN ON THE PLANS SHALL BE USED FROM THE BEGINNING OF BUSINESS ON MONDAY TO 4:30 PM FRIDAY.
8. NO PAVING OR EXCAVATING OPERATIONS SHALL BE PERFORMED AT NIGHT UNLESS AUTHORIZED BY THE ENGINEER.
9. TEMPORARY PAVEMENT MARKINGS PLACED ON NEW FINAL PAVEMENT OR EXISTING PAVEMENT TO BE UNDISTURBED SHALL BE PAVEMENT MARKING TAPE, TYPE III PER ARTICLE 703.05 OF THE STANDARD SPECIFICATIONS.
10. DURING CONSTRUCTION STAGES, TEMPORARY DRAINAGE PROVISIONS WILL BE PROVIDED BY THE CONTRACTOR AS APPROVED BY THE ENGINEER.
11. THE CONTRACTOR SHALL SUBMIT MAINTENANCE OF TRAFFIC PLANS FOR THE APPROVAL OF THE ENGINEER.
12. SHORT TERM PAVEMENT MARKINGS SHALL BE USED AS NECESSARY AT THE DIRECTION OF THE ENGINEER.

STAGE 1 TRAFFIC

1. TRAFFIC SHALL UTILIZE EXISTING PAVEMENT. TRAFFIC LANES SHALL BE A MINIMUM OF 11' WIDE ON FABYAN PARKWAY.

STAGE 1 CONSTRUCTION

1. THE WIDENING ON THE NORTH SIDE OF FABYAN PARKWAY FROM STA. 51+61.09 TO STA. 61+94.00 SHALL BE CONSTRUCTED, INCLUDING PAVEMENT, CURB AND GUTTER, DRAINAGE STRUCTURES, EARTHWORK, AND OTHER WORK WITHIN THE WORK ZONE AS SHOWN ON THE PLANS.

STAGE 2 TRAFFIC

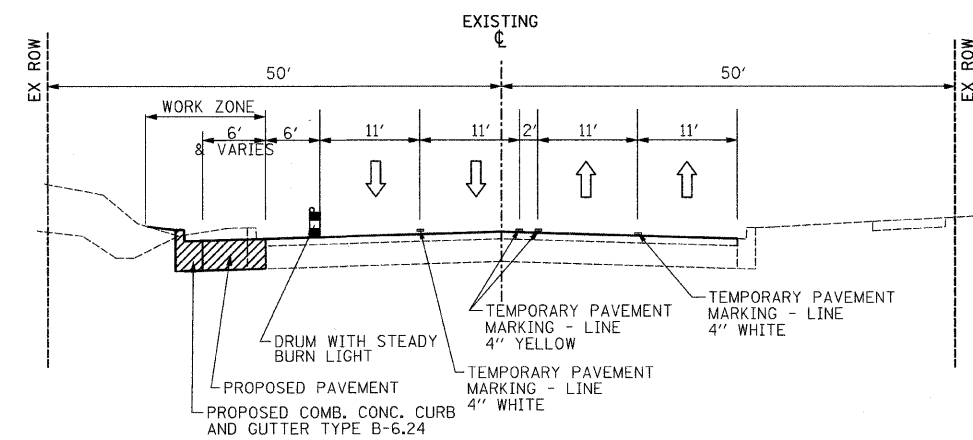
1. TRAFFIC SHALL UTILIZE EXISTING PAVEMENT ON FABYAN PARKWAY.

STAGE 2 CONSTRUCTION

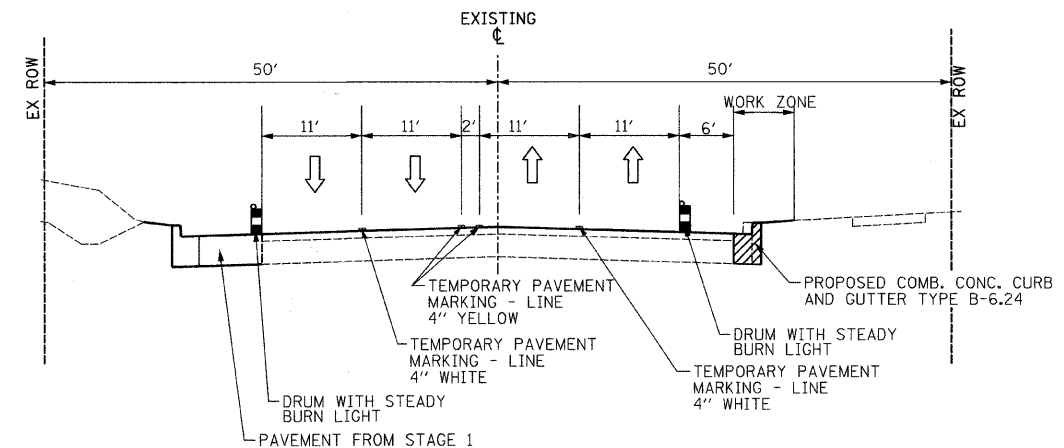
1. REMOVE AND REPLACE THE CURB AND GUTTER ON THE SOUTH SIDE OF FABYAN PARKWAY FROM STA. 51+61.90 TO STA. 58+46.22.

STAGE 3

1. PERFORM HOT-MIX ASPHALT SURFACE REMOVAL, PERFORM PAVEMENT PATCHING AS DIRECTED BY THE ENGINEER AND RESURFACE EXISTING PAVEMENT FROM STA. 43+88.10 TO 61+94.00. LANE CLOSURES FOR PAVEMENT PATCHING AND PAVING OPERATIONS SHALL BE PERFORMED IN ACCORDANCE WITH IDOT STANDARD 701606.



**MAINTENANCE OF TRAFFIC TYPICAL SECTION
FABYAN PARKWAY
STAGE 1**



**MAINTENANCE OF TRAFFIC TYPICAL SECTION
FABYAN PARKWAY
STAGE 2**

FILE NAME =	USER NAME = #USCR#	DESIGNED RDT	REVISED -	STATE OF ILLINOIS DEPARTMENT OF TRANSPORTATION	FABYAN PARKWAY SUGGESTED STAGES OF CONSTRUCTION - NOTES	F.A.P. RTE.	SECTION	COUNTY	TOTAL SHEETS	SHEET NO.
#FILE#		DRAWN RDT	REVISED -			363	08-00370-00-SP	KANE	32	8
	PLOT SCALE = #SCALE#	CHECKED JAC	REVISED -			C-91-510-08		CONTRACT NO. 63416		
	PLOT DATE = #DATE#	DATE 12-08-09	REVISED -			ILLINOIS FED. AID PROJECT HSIP-9003 (056)				
				SCALE: NTS	SHEET NO. 8 OF 33 SHEETS	STA.	TO STA.			