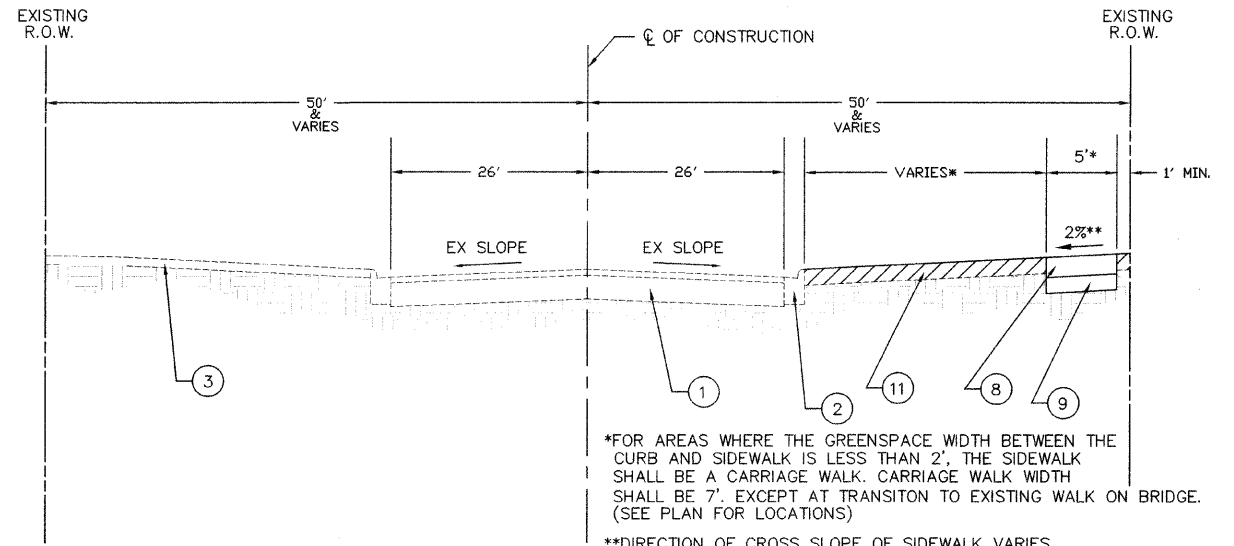
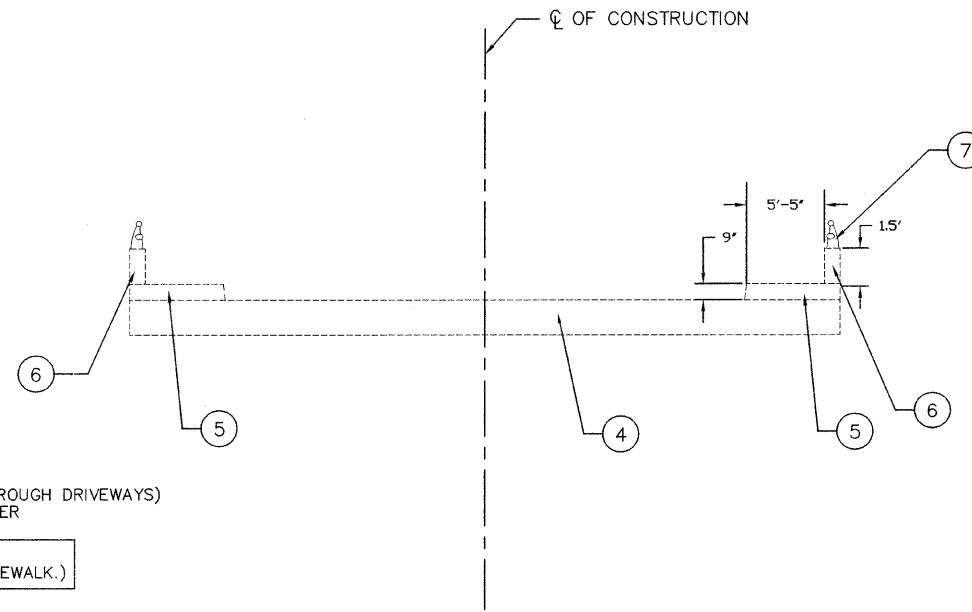


EXISTING TYPICAL CROSS SECTION



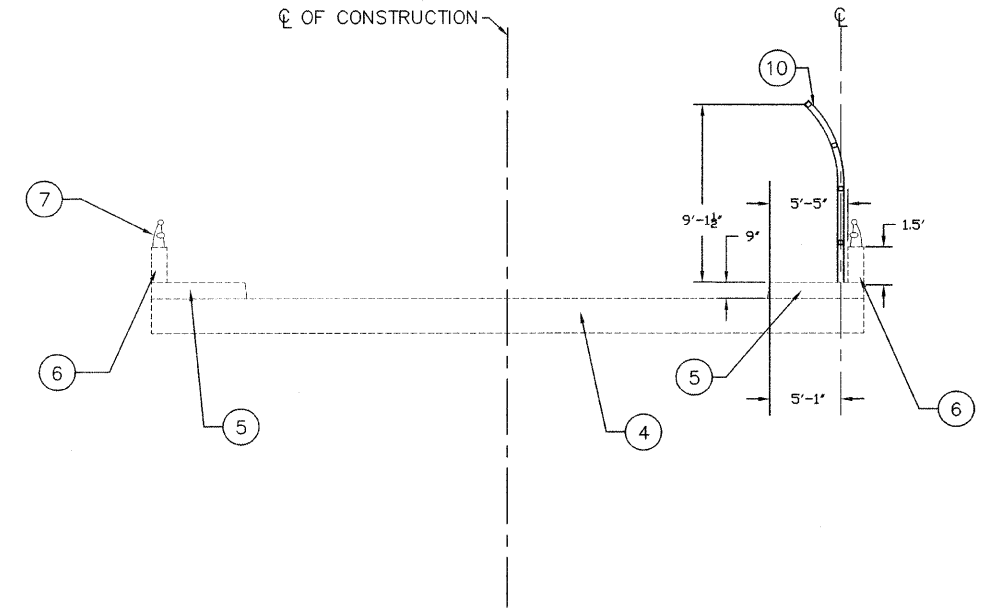
PROPOSED TYPICAL CROSS SECTION

- ① EXISTING ROADWAY
- ② EXISTING CURB & GUTTER
- ③ EXISTING PARKWAY
- ④ EXISTING BRIDGE
- ⑤ EXISTING SIDEWALK
- ⑥ EXISTING CONCRETE PARAPET
- ⑦ EXISTING TYPE L BRIDGE RAIL
- ⑧ PORTLAND CEMENT CONCRETE SIDEWALK, 5-INCH (8-INCH THROUGH DRIVEWAYS) AT LOCATIONS AS SHOWN ON PLANS OR DIRECTED BY ENGINEER
- ⑨ PROPOSED 4" (COMPACTED) AGGREGATE BASE COUSE (CA-6) (INCLUDED IN THE COST OF PORTLAND CEMENT CONCRETE SIDEWALK.)
- ⑩ BRIDGE FENCE RAILING (SIDEWALK) (SEE DETAIL)
- ⑪ PARKWAY RESTORATION (4" TOPSOIL & CLASS 2A SEED WITH EROSION CONTROL BLANKET) (LIMITS TO BE AS SHOWN ON THE PLANS OR DIRECTED BY THE ENGINEER.)



EXISTING TYPICAL BRIDGE CROSS SECTION

(BRIDGE STRUCTURE NUMBER 0162126)



PROPOSED TYPICAL BRIDGE CROSS SECTION

(BRIDGE STRUCTURE NUMBER 0162126)

MIXTURE TYPE	AIR VOIDS • N _{DES}
DRIVEWAYS	
HOT MIX ASPHALT SURFACE COURSE, MIX C, N50 (IL-9.5mm) 3"	4% @ 50 Gyr.
PATCHING, [REDACTED]	
HOT-MIX ASPHALT SURFACE COURSE, MIX D, N70 (IL-9.5mm) 1 1/2"	4% @ 70 Gyr.
CLASS D PATCHES, TYPE I, 6 INCH (HMA BINDER IL-19.0mm)	

NOTE:
 1. THE "AC TYPE" FOR POLYMERIZED HMA MIXES SHALL BE "SBS/SBR PG 70-22" AND FOR NON-POLYMERIZED HMA THE "AC TYPE" SHALL BE "PG 64-22" UNLESS MODIFIED BY DISTRICT ONE SPECIAL PROVISIONS.
 FOR "PERCENT OF RAP" SEE DISTRICT ONE SPECIAL PROVISIONS

NOTE:
 IT IS OUR UNDERSTANDING THAT IDOT INTENDS TO REMOVE AND RECONSTRUCT THE I-57 BRIDGE (STRUCTURE NUMBER 0162126) AS PART OF THE FUTURE I-57/I-294 INTERCHANGE WHICH IS CURRENTLY IN PHASE 1 ENGINEERING.

FILE NAME =	USER NAME =	DESIGNED -- GGA/JDH	REVISED -- 11-30-09
H:\09\09-024\PLANS\TYPICAL SECTION.dwg		DRAWN -- GGA/BKL/BJB	REVISED --
	PLOT SCALE =	CHECKED -- MAW	REVISED --
	PLOT DATE = 11/30/09 - 20:27 by Mark	DATE --	REVISED --

**STATE OF ILLINOIS
 DEPARTMENT OF TRANSPORTATION**

**KEDZIE AVENUE FROM 153RD ST. TO 159TH ST.
 SIDEWALK CONSTRUCTION
 TYPICAL SECTIONS**

SCALE:	SHEET NO. 3 OF 19 SHEETS	STA. TO STA.	F.A.U. RTE. 2831	SECTION 09-00041-00-SW	COUNTY COOK	TOTAL SHEETS 19	SHEET NO. 3
			FED. ROAD DIST. NO. 1 ILLINOIS		FED. AID PROJECT ARA 9003(395)		

CONTRACT NO. 63421