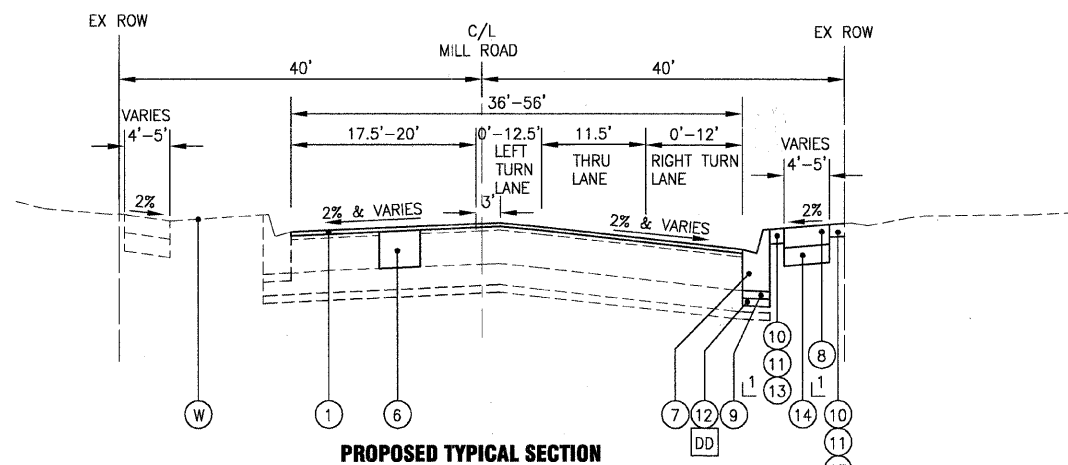


**EXISTING TYPICAL SECTION  
MILL ROAD  
STA. 119+53 TO STA. 125+63  
(NOT TO SCALE)**

- 1 AS INDICATED IN PLANS
- 2 AS INDICATED IN PLANS OR AS DETERMINED BY THE ENGINEER
- 3 AS REQUIRED



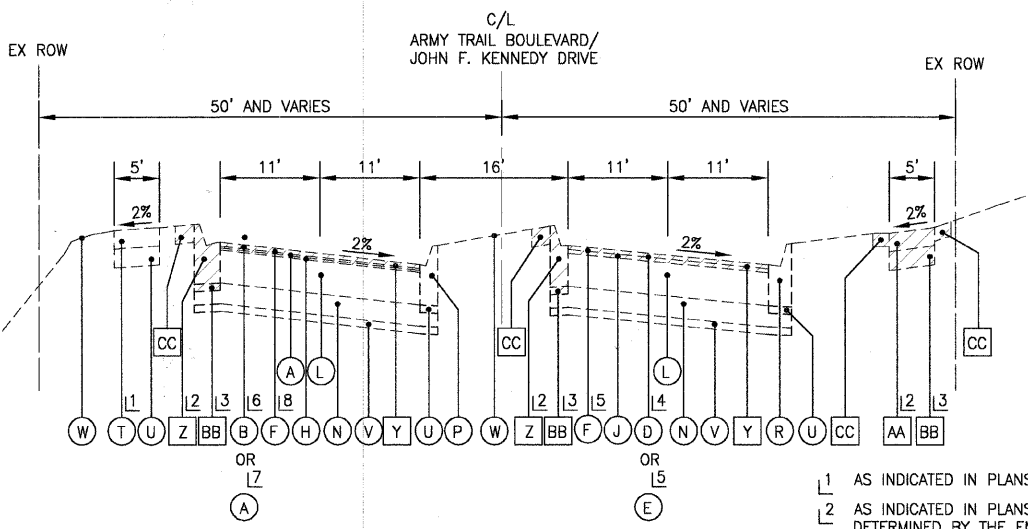
**PROPOSED TYPICAL SECTION  
MILL ROAD  
STA. 119+53 TO STA. 125+63  
(NOT TO SCALE)**

1 INCLUDED IN PAY ITEM ABOVE

\*\* POROUS GRANULAR EMBANKMENT, SUBGRADE (PGES) HAS BEEN PROVIDED FOR USE AT THE LOCATIONS INDICATED FOR SOILS THAT TEND TO BE UNSUITABLE OR UNSTABLE. THE ACTUAL NEED FOR REMOVAL AND REPLACEMENT WITH PGES WILL BE DETERMINED IN THE FIELD AT THE TIME OF CONSTRUCTION BY THE GEOTECHNICAL ENGINEER. ALL POTENTIALLY UNSTABLE SOILS SHOULD BE TESTED WITH A STATIC CONE PENETROMETER AND TREATED IN ACCORDANCE WITH ARTICLE 301.03 AND THE UNDERCUT GUIDELINES IN THE IDOT SUBGRADE STABILITY MANUAL. IF UNSTABLE AND/OR UNSUITABLE MATERIAL IS NOT ENCOUNTERED, THEN THE QUANTITY SHALL BE DEDUCTED AND NO ADDITIONAL COMPENSATION WILL BE DUE TO THE CONTRACTOR.

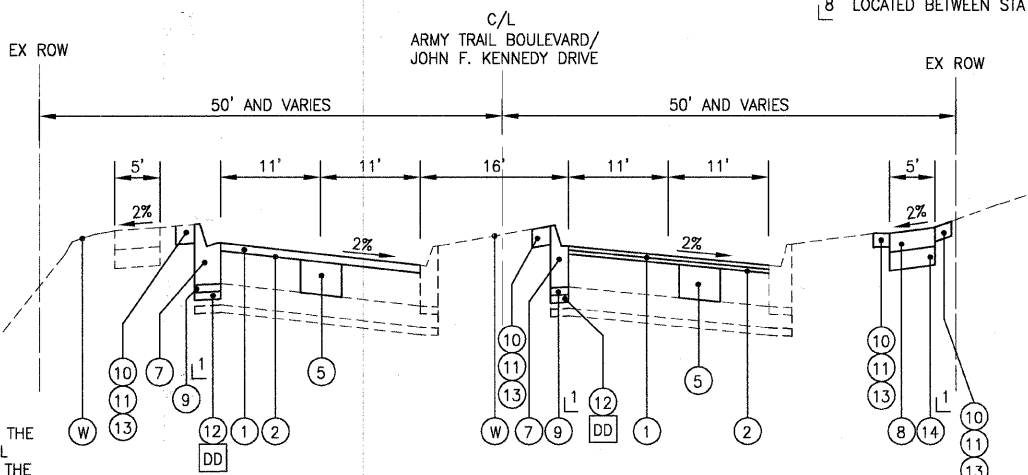
**EXISTING LEGEND**

- |  |   |
|--|---|
| (A) HOT-MIX ASPHALT SURFACE COURSE, 1"                 | (R) COMBINATION CONCRETE CURB AND GUTTER, TYPE B-6.18   |
| (B) HOT-MIX ASPHALT SURFACE COURSE, 1 1/4"             | (S) COMBINATION CONCRETE CURB AND GUTTER, TYPE B-6.24   |
| (C) HOT-MIX ASPHALT SURFACE COURSE, 1 3/4"             | (T) EXISTING SIDEWALK   |
| (D) HOT-MIX ASPHALT SURFACE COURSE, 2"                 | (U) AGGREGATE BASE COURSE   |
| (E) HOT-MIX ASPHALT SURFACE COURSE, 2 1/2"             | (V) EXISTING SUB-GRADE  |
| (F) AREA REFLECTIVE CRACK CONTROL TREATMENT (PETROMAT) | (W) GROUND SURFACE  |
| (G) HOT-MIX ASPHALT BINDER COURSE, 1 3/4"              | (X) HOT-MIX ASPHALT SURFACE REMOVAL, 2"   |
| (H) HOT-MIX ASPHALT BINDER COURSE, 2"                  | (Y) HOT-MIX ASPHALT SURFACE REMOVAL, 4 1/2"   |
| (J) HOT-MIX ASPHALT BINDER COURSE, 2 1/4"              | (Z) COMBINATION CONCRETE CURB AND GUTTER REMOVAL AND REPLACEMENT  |
| (K) HOT-MIX ASPHALT BASE COURSE, 5 1/4" - 8 1/2"       | (AA) SIDEWALK REMOVAL   |
| (L) HOT-MIX ASPHALT BASE COURSE, 6 1/4" - 8 1/4"       | (BB) AGGREGATE BASE COURSE REMOVAL (INCLUDED IN THE COST OF ITEM REMOVED ABOVE)   |
| (M) HOT-MIX ASPHALT BASE COURSE, 9 3/4"                | (CC) PARKWAY REMOVAL (INCLUDED IN THE COST OF COMBINATION CONCRETE CURB AND GUTTER REMOVAL AND REPLACEMENT OR TOPSOIL FURNISH AND PLACE (PULVERIZED) VARIABLE DEPTH - 4" MIN) |
| (N) CRUSHED LIMESTONE, 3 1/2" - 14"                    | (DD) REMOVAL AND DISPOSAL OF UNSUITABLE MATERIALS **  |
| (P) SUB-BASE GRANULAR MATERIAL, TYPE B, 12"            | (Hatched) ITEM TO BE REMOVED  |



**EXISTING TYPICAL SECTION  
ARMY TRAIL BOULEVARD/JOHN F. KENNEDY DRIVE  
STA. 198+90 TO STA. 232+27  
(NOT TO SCALE)**

- 1 AS INDICATED IN PLANS
- 2 AS INDICATED IN PLANS OR AS DETERMINED BY THE ENGINEER
- 3 AS REQUIRED
- 4 LOCATED BETWEEN STA 198+90 TO STA 209+00
- 5 LOCATED BETWEEN STA 209+00 TO STA 232+27
- 6 LOCATED BETWEEN STA 198+90 TO STA 216+00
- 7 LOCATED BETWEEN STA 216+00 TO STA 232+27
- 8 LOCATED BETWEEN STA 205+50 TO STA 232+27



**PROPOSED TYPICAL SECTION  
ARMY TRAIL BOULEVARD/JOHN F. KENNEDY DRIVE  
STA. 198+90 TO STA. 232+27  
(NOT TO SCALE)**

1 INCLUDED IN PAY ITEM ABOVE

**PROPOSED LEGEND**

- 1 HOT-MIX ASPHALT SURFACE COURSE, MIX "D", N70 - 2"
- 2 HOT-MIX ASPHALT BINDER COURSE, IL-19.0, N70 - 2 1/2"
- 3 NOT USED
- 4 NOT USED
- 5 CLASS D PATCHES, TYPE I - IV, 8 INCH
- 6 CLASS D PATCHES, TYPE I - IV, 12 INCH
- 7 COMBINATION CONCRETE CURB AND GUTTER REMOVAL AND REPLACEMENT
- 8 PORTLAND CEMENT CONCRETE SIDEWALK 5 INCH
- 9 AGGREGATE BASE COURSE, TYPE B 4"
- 10 TOPSOIL FURNISH AND PLACE (PULVERIZED) VARIABLE DEPTH - 4" MIN. (SEE LEGEND NOTES 1 & 2 THIS SHEET)
- 11 SEEDING, CLASS 1A (SEE LEGEND NOTE 1 THIS SHEET)
- 12 POROUS GRANULAR EMBANKMENT, SUBGRADE\*\* (AS DETERMINED BY THE ENGINEER) - 6" MIN
- 13 EXCELSIOR BLANKET, SPECIAL
- 14 AGGREGATE BASE COURSE, TYPE B 3"

**LEGEND NOTES:**

1. PARKWAY DAMAGED BY COMBINATION CONCRETE CURB AND GUTTER REMOVAL AND REPLACEMENT SHALL BE RESTORED WITH PULVERIZED TOPSOIL, EXCELSIOR BLANKET, SPECIAL AND SEED FOR A MINIMUM DISTANCE OF 2' PERPENDICULAR TO THE BACK OF CURB. RESTORATION SHALL BE INCLUDED IN THE COMBINATION CONCRETE CURB AND GUTTER REMOVAL AND REPLACEMENT PAY ITEM.
2. PARKWAY DAMAGED BY WATER MAIN INSTALLATION, DRIVEWAY OR SIDEWALK REMOVAL AND REPLACEMENT, OR SIDEWALK INSTALLATION SHALL BE PAID FOR SEPARATELY AS TOPSOIL FURNISH AND PLACE (PULVERIZED) VARIABLE DEPTH - 4" MIN; EXCELSIOR BLANKET, SPECIAL; AND SEEDING, CLASS 1A. THE AREA OF RESTORATION SHALL BE DETERMINED BY THE VILLAGE AND ENGINEER. ANY AND ALL RESTORATION BEYOND THESE LIMITS SHALL BE COMPLETED TO THE SATISFACTION OF THE VILLAGE AND ENGINEER AT THE CONTRACTOR'S EXPENSE.
3. SIDEWALK REMOVAL AND REPLACEMENT LOCATIONS TO BE DETERMINED BY THE ENGINEER, UNLESS OTHERWISE SHOWN. MINIMUM SIDEWALK REMOVAL AND REPLACEMENT SHALL BE 25 SQ. FT.
4. CURB AND GUTTER REMOVAL AND REPLACEMENT LOCATIONS TO BE DETERMINED BY THE ENGINEER, UNLESS OTHERWISE SHOWN. MINIMUM CURB AND GUTTER REMOVAL AND REPLACEMENT SHALL BE 10 FT.

\*3884 ARMY TRAIL BLVD.  
\*2625 MILL ROAD

I:\ADDN\070142-ARMY TRAIL-MILL LAPP & WATER MAIN\CADD-SURVEY\DRAWINGS\DWGS\070142-TYP-SEC.DWG 13  
 Plotted: 11/23/2009 3:47 PM By: 560KAR  
 Copyright © 2009, By: Baxter & Woodman, Inc.  
 State of Illinois - Professional Design Firm  
 License No. - 184-001121 - Expires 4-30-11



DESIGNED - MWP	REVISED - VILLAGE REVIEW 9-08-09
DRAWN - UKB	REVISED - VILLAGE REVIEW 11-05-09
CHECKED - RWL	REVISED - IDOT REVIEW 11-17-09
DATE - 8-19-09	REVISED -

**VILLAGE OF ADDISON, ILLINOIS  
MILL ROAD AND ARMY TRAIL BOULEVARD  
STP IMPROVEMENTS**

TYPICAL SECTIONS		FAU. RTE.	SECTION	COUNTY	TOTAL SHEETS	SHEET NO.
SCALE:	PROJECT NO: 070142	STA.	TO STA.	DuPage	69	13
		C-91-056-10		CONTRACT NO. 63427		
		FED. ROAD DIST. NO. 1	ILLINOIS	FED. AID PROJECT M-9003 (474)		