

STRUCTURES							
NO.	STATION	OFFSET	TYPE	EX. FRAME	PR. FRAME	RIM / EP	INVERT
S-5	106+17.8	18.8' LT	INLET, TYPE A	-	TY 11	685.0 EP	681.98 12" E
S-5A	106+18	18.9' RT	CATCH BASIN, TYPE A, 4'	-	TY 11	685.2 EP	681.60 12" E, W
S-5B	106+18	37.5' RT	MANHOLE, TYPE A, 4'	-	TY 1 CL	685.8 RIM	681.47 12" W, N, S
S-6	107+82.5	19.2' RT	-	TY 11	TY 11	-	-
S-6A	107+83	33.5' RT	EX MANHOLE	TY 1 CL	TY 1 CL	684.01 RIM	679.58 12" E (EX), W (EX), S
S-7	RESERVED	-	-	-	-	-	-
S-8	108+53.9	10.7' LT	-	TY 1 CL	TY 1 CL	-	-

PIPES					
NO.	TYPE	LENGTH (LF)	DIA (IN)	SLOPE	TBF (CY)
P-4	STORM SEWER (WATER MAIN REQUIREMENTS)	38	12	1.00%	12
P-5	STORM SEWER, CLASS A, TYPE 1	18	12	0.72%	6
P-6	STORM SEWER, CLASS A, TYPE 2	165	12	1.15%	105

WATER MAIN FITTINGS (RJT)	
WM-F8 STA. 105+72, 4' RT 10" X 6" TEE	WM-F13 STA. 108+17.5, 39' RT 8" - 45' BEND
WM-F9 STA. 106+91.5, 4' RT 10" X 4" TEE	WM-F14 STA. 108+17.5, 41' RT 8" SLEEVE
WM-F10 NOT USED	WM-F15 STA. 108+58, 21' RT 6" - 45' BEND
WM-F11 STA. 108+58, 4' RT 10" X 6" TEE	WM-F16A STA. 108+61, 4' RT 10" - 11 1/4' BEND
WM-F12 STA. 108+28, 29' RT 8" - 45' BEND	WM-F16A STA. 108+97, 11.5' RT 10" - 11 1/4' BEND

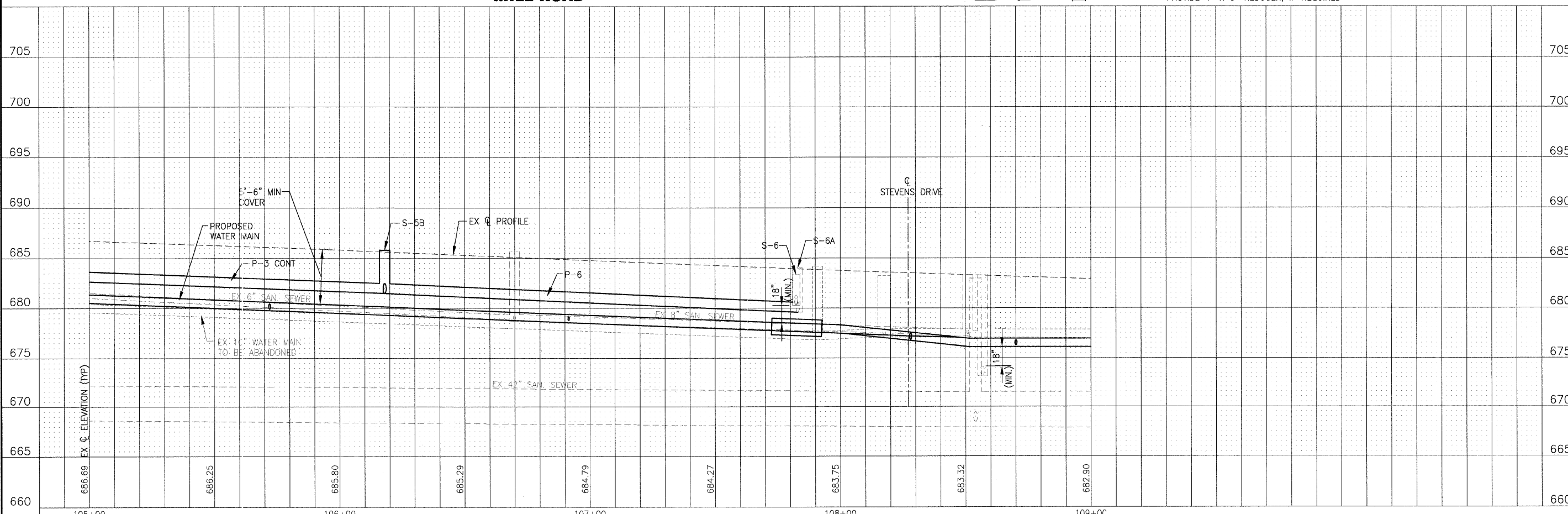
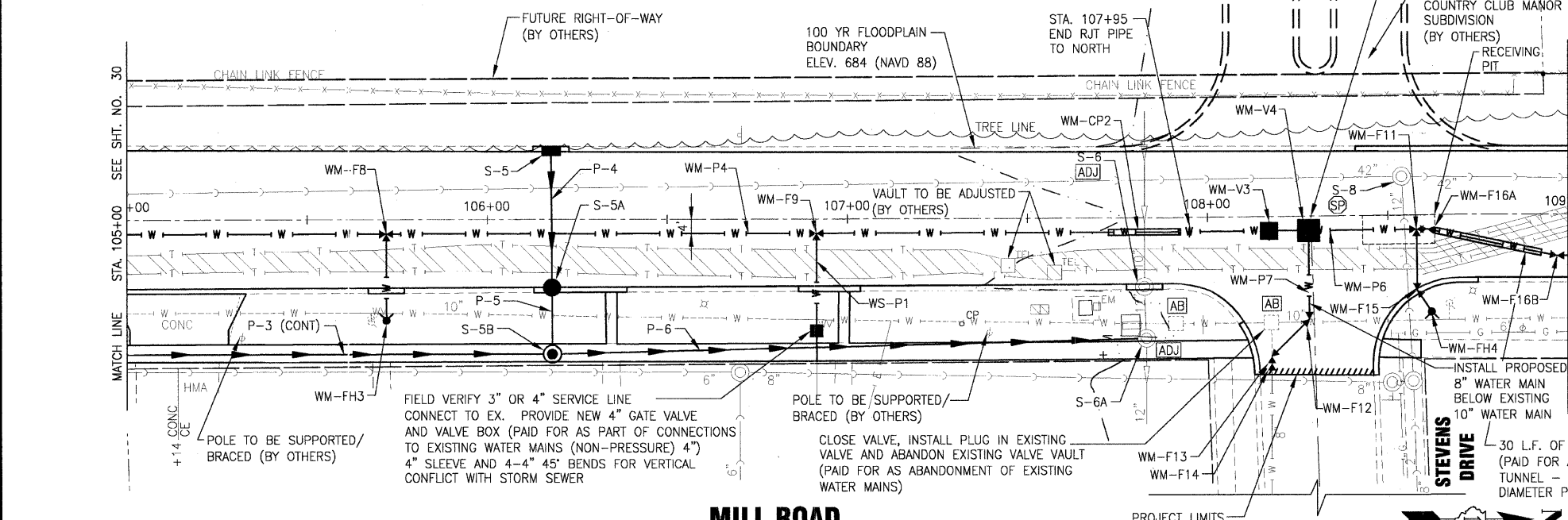
WATER MAIN VALVES	
WM-V3 STA. 108+17, 4' RT 10" GATE VALVE WITH 5' DIA VALVE VAULT	WM-V4 STA. 108+28, 4' RT 8" X 8" TEE AND 8" GATE VALVE INSIDE 6' DIA VALVE VAULT
WM-V5 NOT USED	

WATER MAIN PIPES	
WM-P4 295 L.F. OF 10" WATER MAIN	WM-P5 NOT USED
WM-P6 110 L.F. OF 10" WATER MAIN (RJT)	WM-P7 45 L.F. OF 8" WATER MAIN (RJT)

FIRE HYDRANTS	
WM-FH 3 STA. 105+72, 28' RT FIRE HYDRANT WITH 19 L.F. OF 6" LEADER PIPE (RJT)	WM-FH 4 STA. 108+62, 27' RT FIRE HYDRANT WITH 20 L.F. OF 6" LEADER PIPE

WATER SERVICE PIPE	
WS-P1 27 L.F. OF 4" WATER MAIN (RJT) PROVIDE 4" X 3" REDUCER, IF REQUIRED	

WATER MAIN CASING PIPE	
WM-CP2 20 L.F. OF 20" P.V.C. CASING PIPE INSTALLED IN OPEN CUT TRENCH	WM-CP3 NOT USED



	DESIGNED - JJS	REVISED - VILLAGE REVIEW 9-08-09	<b>VILLAGE OF ADDISON, ILLINOIS</b> <b>MILL ROAD AND ARMY TRAIL BOULEVARD</b> <b>STP IMPROVEMENTS</b>	<b>DRAINAGE AND UTILITY</b> <b>MILL ROAD</b>	*3884 ARMY TRAIL BLVD. *2625 MILL ROAD	F.A.U. RTE.	SECTION	COUNTY	TOTAL SHEETS	SHEET NO.
	DRAWN - UKB	REVISED - VILLAGE REVIEW 11-05-09				*	09-00098-00-RS	DuPage	69	31
CHECKED - SMV	REVISED - IDOT REVIEW 11-17-09					C-91-056-10	CONTRACT NO. 63427			
DATE - 8-19-09	REVISED - VILLAGE REVIEW 12-07-09					FED. ROAD DIST. NO. 1	ILLINOIS	FED. AID PROJECT M-9003 (474)		

I:\ADDISON\070142-ARMY TRAIL-MILL LAPP & WATER MAIN\CADD-SURVEY\DRAWINGS\DWG\070142-MILL-WM-PRE.DWG PP31  
Printed: 12/8/2009 2:02 PM By: 331UKB  
Scale: 1"=20' Horizontal, 1"=5' Vertical  
Author: JJS, UKB, SMV, JMS  
Checker: SMV  
Date: 8-19-09  
License No. 184-001121 - Expires 4-30-11