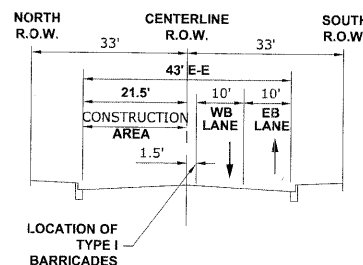


STAGE II CONSTRUCTION

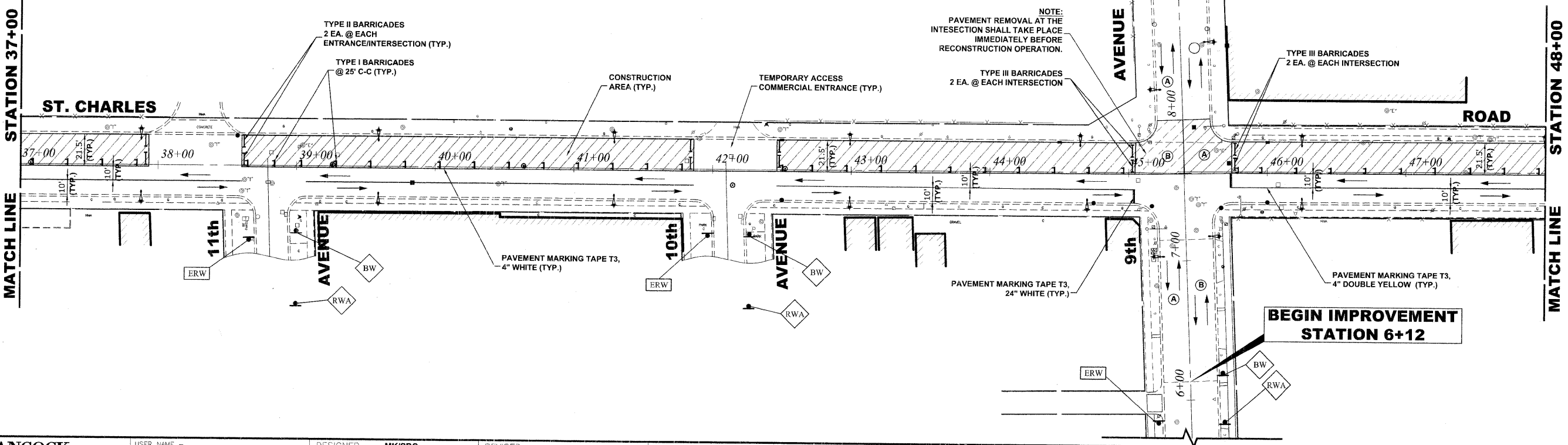
1. WORK DURING THIS STAGE SHALL CONSIST OF THE REMOVAL AND REPLACEMENT OF UTILITIES AND ROADWAY AS INDICATED ON THE PROPOSED PAVEMENT AND UTILITY PLANS ALONG NORTH SIDE OF ST. CHARLES RD.
2. ALL THE PRIVATE AND COMMERCIAL DRIVEWAYS TO BE OPENED ALL THE TIME FOR TRAFFIC OR AS DIRECTED BY THE ENGINEER.
3. IDOT STANDARD 701501-05 SHALL BE USED TO ESTABLISH TRAFFIC CONTROL AND PROTECTION NECESSARY FOR SAW CUTTING, THE REMOVAL OF EXISTING PAVEMENT, EARTH EXCAVATION AS NECESSARY AND PERFORMING ALL THE PROPOSED PAVEMENT WORK ALONG NORTH SIDE OF ST. CHARLES RD.
4. INTERSECTIONS ARE TO REMAIN OPEN AT ALL TIMES, PAID FOR AS TEMPORARY ACCESS (ROAD), EXCEPT FOR PREPARATION, POURING AND CURING OF NEW PAVEMENT. THE CONTRACTOR MUST STAGGER INTERSECTIONS THAT ARE CLOSED SUCH THAT NO TWO INTERSECTIONS ADJACENT TO EACH OTHER ARE CLOSED AT THE SAME TIME.

LEGEND

- CONSTRUCTION WORK ZONE
- DIRECTION OF TRAFFIC FLOW



TYPICAL SECTION DURING STAGE II CONSTRUCTION



BEGIN IMPROVEMENT STATION 6+12

END IMPROVEMENT STATION 10+45

HANCOCK ENGINEERING
 Civil Engineers
 Municipal Consultants
 Established 1911

USER NAME -	DESIGNED - MK/SBC	REVISED -
PLOT SCALE -	DRAWN - MK/LEV	REVISED -
PLOT DATE -	CHECKED - SBC/JGMV	REVISED -
	DATE - 11-30-09	REVISED -

STATE OF ILLINOIS DEPARTMENT OF TRANSPORTATION

MAINTENANCE OF TRAFFIC PLAN STAGE II CONSTRUCTION

SCALE: 1" = 40' SHEET NO. 2 OF 3 SHEETS STA. 25+50 TO STA. 48+00

F.A.U. RTE.	SECTION	COUNTY	TOTAL SHEETS	SHEET NO.
1397	09-00129-00-PV	COOK	103	17

FED. ROAD DIST. NO. 1 ILLINOIS FED. AID PROJECT M-9003 (267) CONTRACT NO. 63428 (BOOK NOS. 1579, 1583, 1589) E.H.E PROJECT NO. 565-09-29001

Drawing file: W:\Projects\565092900 - St. Charles Rd\12.St. Charles Staging.dwg Dec 04, 2009 - 1:49pm