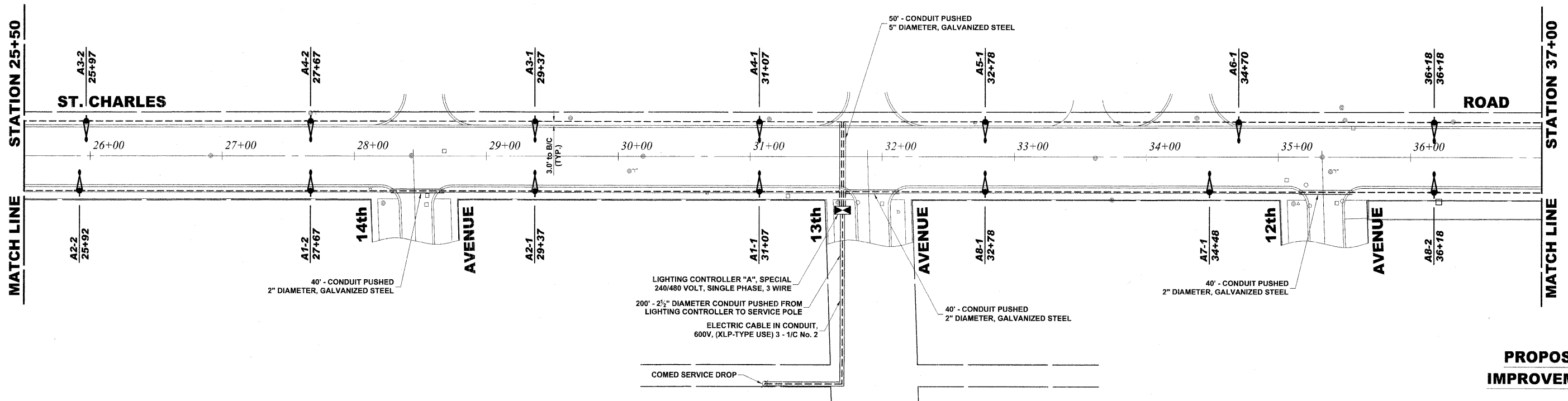


LEGEND OF SYMBOLS	
	EXISTING POST TOP LIGHT POLE AND FIXTURE TO BE REMOVED
	EXISTING LIGHT POLE AND FIXTURE TO BE REMOVED
	PROPOSED 35' MH POLE WITH 6' ARM & 250 WATT METAL HALIDE LAMP
	PROPOSED CONTROL CENTER
	EXISTING OVERHEAD WIRING
	PROPOSED UNIT DUCT WITH 3-1/C No.6 & 1-1/C No.8 GROUND, 600V (XLP-(TYPE USE)), 1" DIAMETER OR AS NOTED, BORED & PULLED
	PROPOSED GALVANIZED STEEL CONDUIT IN TRENCH OR PUSHED AS NOTED
	CONTROLLER IDENTIFICATION (TYP.)
	CIRCUIT NUMBER (TYP.)
	POLE NUMBER (TYP.)
	STATION NUMBER (TYP.)

EXISTING TOPOGRAPHY



PROPOSED IMPROVEMENT

Drawing file: W:\Projects\565082900 - St. Charles Rd\52_St. Charles Lighting.dwg Nov. 30, 2009 - 2:52pm

HANCOCK ENGINEERING
 Civil Engineers
 Municipal Consultants
 Established 1911

9033 Riverwood Road
 Wood Dale, Illinois 60194-2786
 Phone: 708.946.1300
 Fax: 708.946.1332

USER NAME -	DESIGNED - MK/SBC	REVISED -
PLOT SCALE -	DRAWN - MK/LEV	REVISED -
PLOT DATE -	CHECKED - SBC/JGMV	REVISED -
	DATE - 11-30-09	REVISED -

**STATE OF ILLINOIS
DEPARTMENT OF TRANSPORTATION**

ILLUMINATION PLAN

SCALE: 1" = 40' SHEET NO. 3 OF 5 SHEETS STA. 25+50 TO STA. 37+00

F.A.U. RTE.	SECTION	COUNTY	TOTAL SHEETS	SHEET NO.
1397	09-00129-00-PV	COOK	103	54
CONTRACT NO. 63428			M-9003 (267)	
FED. ROAD DIST. NO. 1 ILLINOIS FED. AID PROJECT (BOOK NOS. 1579, 1583, 1589) E.H.E PROJECT NO. 565-08-29001				