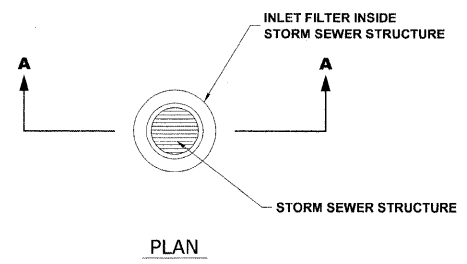
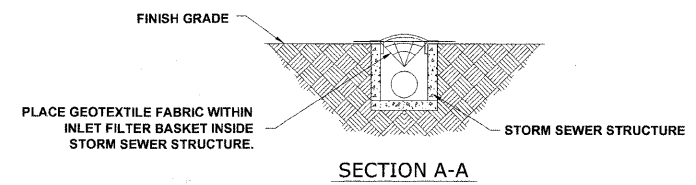


**EROSION CONTROL NOTES**

1. SEE IDOT STANDARD 280001-05 FOR TEMPORARY EROSION CONTROL SYSTEMS.
2. THE CONTRACTOR SHALL ENSURE THAT ADJACENT PROPERTIES REMAIN PROTECTED FROM SEDIMENT DEPOSITION.
3. SOIL STOCKPILES SHALL BE PROTECTED WITH PERIMETER EROSION BARRIER OR OTHER EROSION PROTECTION SPECIFIED BY THE RESIDENT ENGINEER. THE COST SHALL BE INCLUDED IN THE UNIT PRICE FOR THE INDIVIDUAL SOIL MATERIALS.
4. WHEREVER CONSTRUCTION VEHICLE ACCESS ROUTES INTERSECT PAVED PUBLIC ROADS, PROVISIONS SHALL BE MADE TO MINIMIZE THE TRANSPORT OF SEDIMENT BY RUNOFF OR VEHICLE TRACKING ONTO THE PAVED SURFACE. THE PROVISIONS MAY INCLUDE SPRAYING VEHICLE WHEELS TO CLEAR SEDIMENT BEFORE EXITING THE CONSTRUCTION SITE OR OTHER MEASURES APPROVED BY THE ENGINEER.

**LEGEND**

SYMBOL	DESCRIPTION
◆	INLET FILTER/SEDIMENT CONTROL, DRAINAGE STRUCTURE



Drawing file: W:\Projects\150508290 - St. Charles Rd\150508290 - St. Charles Rd\150508290 - Scale.dwg Dec 08, 2009 - 9:59am

**HANCOCK ENGINEERING**  
 Civil Engineers  
 Municipal Consultants  
 Established 1911

9033 Riverfront Blvd  
 Westchester, Illinois 60154-2786  
 Phone: 708-661-5500  
 Fax: 708-661-5292

USER NAME --	DESIGNED -- MK/SBC	REVISED --
	DRAWN -- MK/LEV	REVISED --
PLOT SCALE --	CHECKED -- SBC/JG/MV	REVISED --
PLOT DATE --	DATE -- 11-30-09	REVISED --

**STATE OF ILLINOIS  
DEPARTMENT OF TRANSPORTATION**

**EROSION CONTROL PLAN**

SCALE: 1" = 40'    SHEET NO. 3 OF 3 SHEETS    STA. 48+00 TO STA. 58+95

F.A.U. RTE.	SECTION	COUNTY	TOTAL SHEETS	SHEET NO.
1397	09-00129-00-PV	COOK	103	68
CONTRACT NO. 63428				
FED. ROAD DIST. NO. 1 ILLINOIS FED. AID PROJECT M-9003 (267)				
(BOOK NOS. 1579, 1583, 1589) E.H.E. PROJECT NO. 585-08-29001				