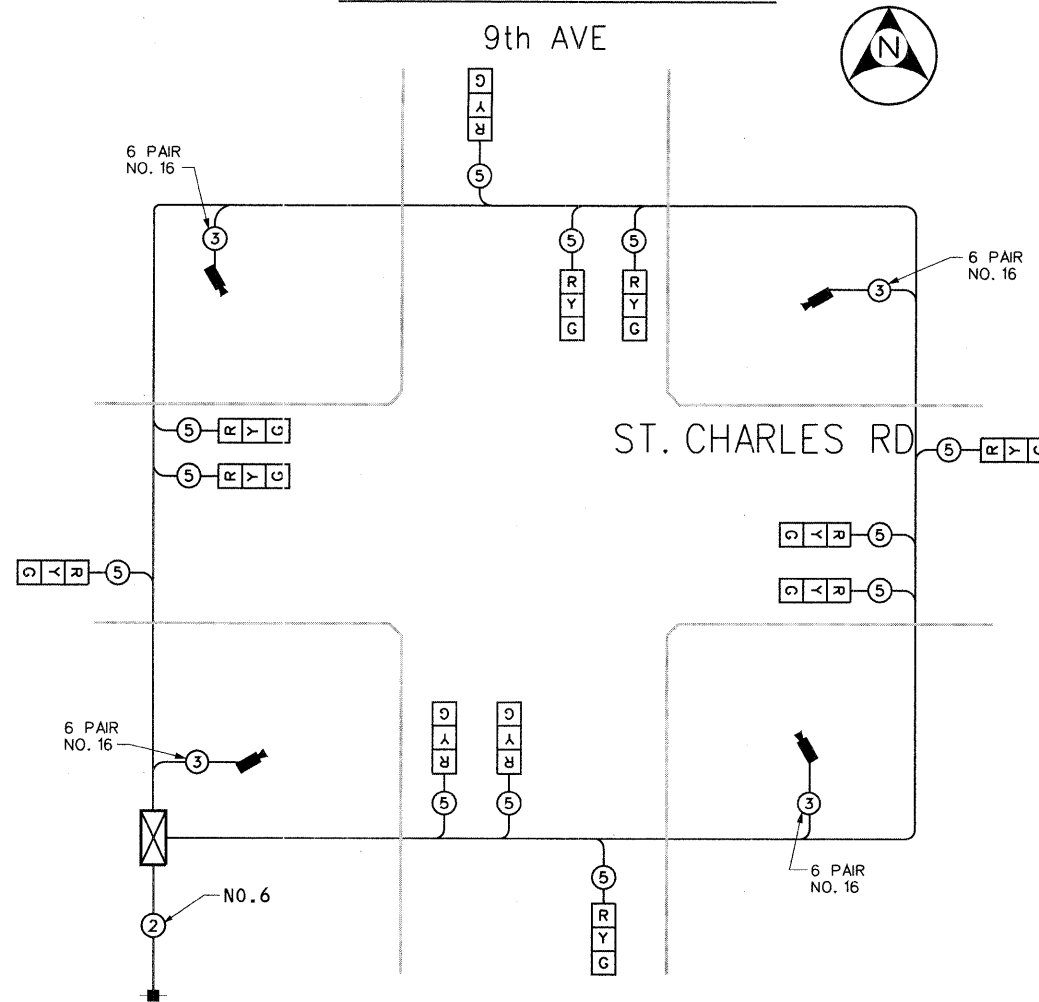


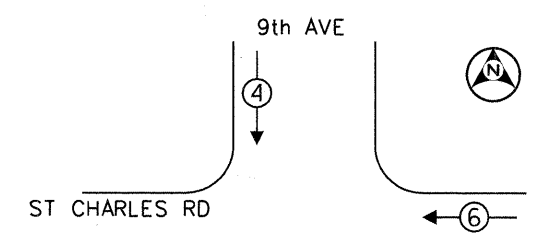
TEMPORARY CABLE PLAN



TEMPORARY CABLE DIAGRAM LEGEND

- TEMPORARY TRAFFIC SIGNAL SECTION OR PEDESTRIAN SIGNAL SECTION 12"
- TEMPORARY CONTROLLER CABINET
- PROPOSED SERVICE INSTALLATION
- INDICATES NUMBER OF CONDUCTORS IN CABLE. ALL CONDUCTORS TO BE NUMBER 14 A.W.G. WIRE UNLESS OTHERWISE NOTED.
- EMERGENCY VEHICLE LIGHT DETECTOR
- CONFIRMATION BEACON
- VEHICLE DETECTOR, INDUCTION LOOP
- PEDESTRIAN PUSHBUTTON DETECTOR
- 12"(300MM) PEDESTRIAN SIGNAL SECTION
- VIDEO VEHICLE DETECTION UNIT
- GROUND ROD AT CONTROLLER (C) OR ELECTRIC SERVICE INSTALLATION (S)

TEMPORARY CONTROLLER SEQUENCE



LEGEND

- SINGLE ENTRY PHASE
- DUAL ENTRY PHASE
- OVERLAP
- PEDESTRIAN PHASE
- NUMBER REFERS TO ASSOCIATED PHASE.

PHASE DESIGNATION DIAGRAM

I.D.O.T. TRAFFIC SIGNAL INSTALLATION ELECTRICAL SERVICE REQUIREMENTS					TOTAL WATTAGE
TYPE	NO. OF LAMPS	WATTAGE	LED % OPERATIONS		
SIGNAL (RED)	12	135	17	0.50	102
(YELLOW)	12	135	25	0.25	75
(GREEN)	12	135	15	0.25	45
ARROW		135	12	0.10	
PED. SIGNAL		90	25	1.00	
CONTROLLER	1	100	100	1.00	100
ILLUM. SIGN		84		0.05	
FLASHER				0.50	

ENERGY COSTS TO: VILLAGE OF MAYWOOD
 40 E. MADISON ST.
 MAYWOOD, ILLINOIS 60153
 (708) 344-1200

ENERGY SUPPLY - CONTACT: MICHAEL BELL
 PHONE: (708) 410-5314
 COMPANY: COMED

FOUNDATION (DEPTH)	FT. (m)	CABLE SLACK	FT. (m)	VERTICAL	FT. (m)
TYPE A - POST	4 (1.2)	HANDHOLE	6.5 (2.0)	ALL FOUNDATIONS	3.5 (1.1)
D - CONTROLLER	4 (1.2)	DOUBLE HANDHOLE	13 (4.0)	MAST ARM (L) POLE	20'±L-2' =
E - M ARM POLE		SIGNAL POST	2 (1.0)		(6.1+L-1.0) =
24" (600mm)	10 (3.0)	CONTROLLER CAB.	1 (0.5)	BRACKET MOUNTED	13 (4.0)
30" (750mm)	15 (4.6)	FIBER OPTIC	13 (4.0)	PED. PUSHBUTTON	4 (1.2)
36" (900mm)	15 (4.6)	ELECTRIC SERVICE	1 (0.5)	ELECTRIC SERVICE	13.5 (4.1)
		GROUND CABLE	1 (0.5)	SERVICE TO GROUND	13.5 (4.1)
				POST MOUNTED	6 (1.8)

HANCOCK ENGINEERING
 Civil Engineers
 Municipal Consultants
 Established 1911

USER NAME -	DESIGNED - DAP	REVISED -
PLOT SCALE -	DRAWN - DAP	REVISED -
PLOT DATE -	CHECKED - JAM	REVISED -
	DATE - 11-30-09	REVISED -

STATE OF ILLINOIS
DEPARTMENT OF TRANSPORTATION

TEMPORARY CABLE PLAN, AND PHASE DESIGNATION DIAGRAM
 9th AVE & ST. CHARLES RD, MAYWOOD, IL

PREPARED BY:
METRO TRANSPORTATION GROUP, INC.
 TRAFFIC ENGINEERING, TRANSPORTATION PLANNING,
 TRANSPORTATION ENGINEERING, SIGNAL SYSTEMS/DESIGN
 3100 W. HIGGINS ROAD, HOFFMAN ESTATES, IL 60169
 PH# 630 213-1000 FAX# 630 213-3227

F.A.U. RTE.	SECTION	COUNTY	TOTAL SHEETS	SHEET NO.
1397	09-00129-00-PV	COOK	103	78
CONTRACT NO.			63428	