



CROSS SECTION LEGEND

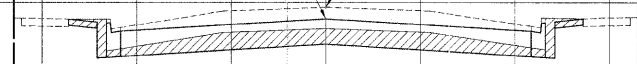
C = CUT (SQ. FT.) 
 F = FILL (SQ. FT.) 

19+50

C = 41.9
F = 0

40.0 30.0 20.0 10.0 Q 10.0 20.0 30.0 40.0
 33.0 NORTH R.O.W. 33.0 SOUTH R.O.W.

PROP. CL = 633.15
 EXIST. CL = 633.76

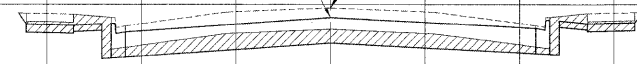


PC
16th AVE.
21+43

C = 46.1
F = 0

40.0 30.0 20.0 10.0 Q 10.0 20.0 30.0 40.0
 33.0 NORTH R.O.W. 33.0 SOUTH R.O.W.

PROP. CL = 633.30
 EXIST. CL = 633.84



19+00

C = 43.7
F = 0

PROP. CL = 633.15
 EXIST. CL = 633.72



LOW POINT (N,S)
21+25

C = 42.5
F = 0

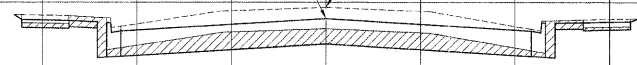
PROP. CL = 633.20
 EXIST. CL = 633.79



PT
17th AVE.
18+55

C = 43.3
F = 0

PROP. CL = 633.15
 EXIST. CL = 633.76



21+00

C = 33.8
F = 0

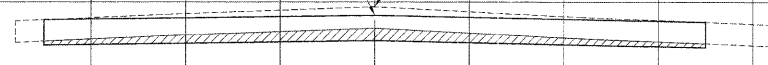
PROP. CL = 633.25
 EXIST. CL = 633.75



CL-CL
17th AVE.
18+33

C = 30.0
F = 0

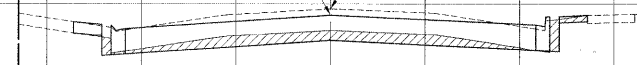
PROP. CL = 633.30
 EXIST. CL = 633.74



SUMMIT (S)
20+50

C = 23.2
F = 0

PROP. CL = 633.40
 EXIST. CL = 633.74



LOW POINT (N,S)
18+00

C = 48.8
F = 0

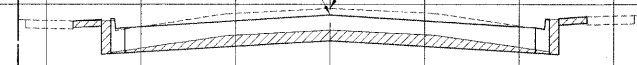
PROP. CL = 633.10
 EXIST. CL = 633.70



SUMMIT (N)
20+25

C = 26.4
F = 0

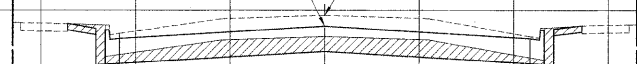
PROP. CL = 633.45
 EXIST. CL = 633.78



17+50

C = 40.4
F = 0

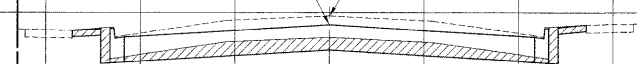
PROP. CL = 633.15
 EXIST. CL = 633.72



20+00

C = 33.3
F = 0

PROP. CL = 633.35
 EXIST. CL = 633.81



40.0 30.0 20.0 10.0 Q 10.0 20.0 30.0 40.0
 33.0 NORTH R.O.W. 33.0 SOUTH R.O.W.

40.0 30.0 20.0 10.0 Q 10.0 20.0 30.0 40.0
 33.0 NORTH R.O.W. 33.0 SOUTH R.O.W.

Drawing file: W:\Projects\56508290 - St. Charles Rd\XSECT_ST CHARLES\XSECT_ST CHARLES.dwg Nov 25, 2009 - 4:55pm

HANCOCK ENGINEERING
 Civil Engineers
 Municipal Consultants
 Established 1911

USER NAME -	DESIGNED - MK/SEC	REVISED -
PLOT SCALE -	DRAWN - MK/LEV	REVISED -
PLOT DATE -	CHECKED - SBC/JG/MV	REVISED -
	DATE - 11-30-09	REVISED -

**STATE OF ILLINOIS
 DEPARTMENT OF TRANSPORTATION**

**STATION CROSS SECTIONS
 ST. CHARLES ROAD**

SCALE: 1"=10'H/5'V. SHEET NO. 4 OF 12 SHEETS STA. 17+50 TO STA. 21+40

F.A.U. RTE.	SECTION	COUNTY	TOTAL SHEETS	SHEET NO.
1397	09-00129-00-PV	COOK	103	94
CONTRACT NO. 63428				
FED. ROAD DIST. NO. 1 ILLINOIS FED. AID PROJECT M-9003 (267)				

(BOOK NOS. 1579, 1583, 1589) E.H.E PROJECT NO. 565-08-29001