



**CROSS SECTION LEGEND**

C = CUT (SQ. FT.)   
 F = FILL (SQ. FT.) 

**SUMMIT (N,S)**

**23+75**

C = 16.6  
F = 0.7

40.0 30.0 20.0 10.0  $\bar{C}$  10.0 20.0 30.0 40.0  
 33.0 NORTH R.O.W. 33.0 SOUTH R.O.W.

PROP. CL = 633.85  
EXIST. CL = 634.06

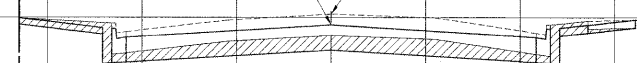


**25+50**

C = 44.2  
F = 0

40.0 30.0 20.0 10.0  $\bar{C}$  10.0 20.0 30.0 40.0  
 33.0 NORTH R.O.W. 33.0 SOUTH R.O.W.

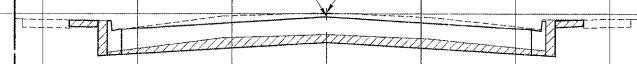
PROP. CL = 633.60  
EXIST. CL = 634.17



**23+50**

C = 25.4  
F = 0

PROP. CL = 633.85  
EXIST. CL = 634.05

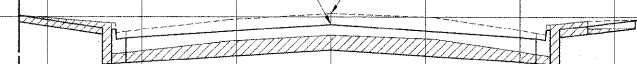


**PT 15th AVE.**

**25+35**

C = 46.2  
F = 0

PROP. CL = 633.60  
EXIST. CL = 634.17



**23+00**

C = 32.1  
F = 0

PROP. CL = 633.65  
EXIST. CL = 634.01

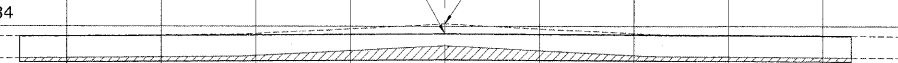


**CL-CL 15th AVE.**

**25+00**

C = 31.2  
F = 0

PROP. CL = 633.60  
EXIST. CL = 634.12



**22+50**

C = 38.5  
F = 0

PROP. CL = 633.45  
EXIST. CL = 633.96

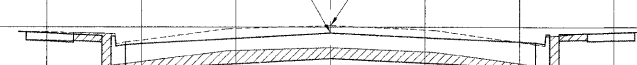


**PC 15th AVE.**

**24+69**

C = 29.8  
F = 0.3

PROP. CL = 633.70  
EXIST. CL = 634.08



**LOW POINT (N,S)**

**22+00**

C = 46.7  
F = 0

PROP. CL = 633.35  
EXIST. CL = 633.92

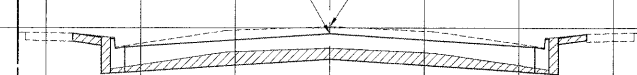


**LOW POINT (N,S)**

**24+50**

C = 31.7  
F = 0

PROP. CL = 633.70  
EXIST. CL = 634.08



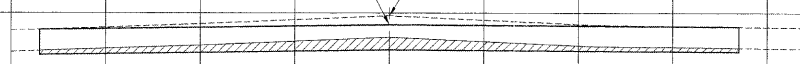
**CL-CL 16th AVE.**

**21+66**

C = 29.1  
F = 0

PROP. CL = 633.40  
EXIST. CL = 633.86

40.0 30.0 20.0 10.0  $\bar{C}$  10.0 20.0 30.0 40.0  
 33.0 NORTH R.O.W. 33.0 SOUTH R.O.W.

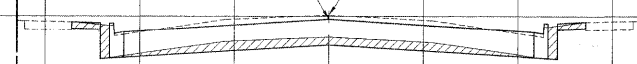


**24+00**

C = 21.5  
F = 0

PROP. CL = 633.85  
EXIST. CL = 634.07

40.0 30.0 20.0 10.0  $\bar{C}$  10.0 20.0 30.0 40.0  
 33.0 NORTH R.O.W. 33.0 SOUTH R.O.W.



**HANCOCK ENGINEERING**  
 Civil Engineers  
 Municipal Consultants  
 Established 1911

USER NAME --	DESIGNED -- MK/SBC	REVISED --
PLOT SCALE --	DRAWN -- MK/LEV	REVISED --
PLOT DATE --	CHECKED -- SBC/JGMV	REVISED --
	DATE -- 11-30-09	REVISED --

**STATE OF ILLINOIS  
 DEPARTMENT OF TRANSPORTATION**

**STATION CROSS SECTIONS  
 ST. CHARLES ROAD**

SCALE: 1"=10'H/V. SHEET NO. 5 OF 12 SHEETS STA. 21+66 TO STA. 25+50

F.A.U. RTE.	SECTION	COUNTY	TOTAL SHEETS	SHEET NO.
1397	09-00129-00-PV	COOK	103	95
CONTRACT NO. 63428			FED. ROAD DIST. NO. 1 ILLINOIS FED. AID PROJECT M-9003 (267)	
(BOOK NOS. 1579, 1583, 1589) E.H.E PROJECT NO. 565-08-29001				

Drawing file: W:\Projects\05082900 - St. Charles Rd\SECT\_ST CHARLES\SECT\_ST CHARLES.dwg Nov 25, 2009 - 4:55pm