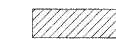


CROSS SECTION LEGEND

C = CUT (SQ. FT.)



F = FILL (SQ. FT.)



40.0 30.0 20.0 10.0 Q 10.0 20.0 30.0 40.0

33.0 WEST R.O.W.

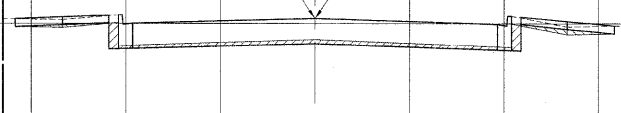
33.0 EAST R.O.W.

END IMPROVEMENT

10+45

C = 10.1
F = 2.4

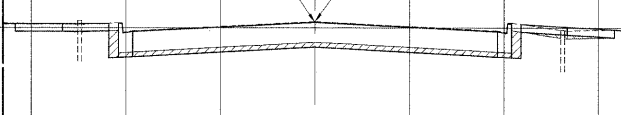
PROP. CL = 633.28
EXIST. CL = 633.28



10+00

C = 13.5
F = 1.1

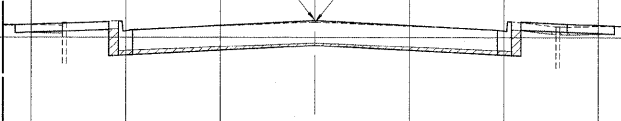
PROP. CL = 631.30
EXIST. CL = 631.35



9+50

C = 10.3
F = 1.1

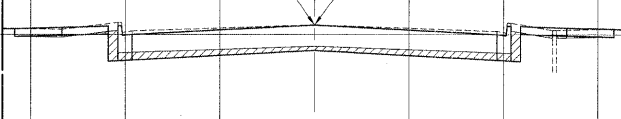
PROP. CL = 630.90
EXIST. CL = 630.81



9+00

C = 16.0
F = 0.9

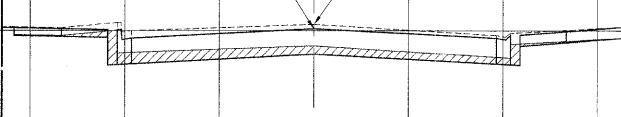
PROP. CL = 630.50
EXIST. CL = 630.50



8+50

C = 23.7
F = 0

PROP. CL = 630.10
EXIST. CL = 630.33

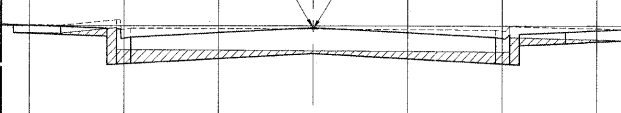


BEGIN IMPROVEMENT

8+26

C = 23.6
F = 0

PROP. CL = 629.90
EXIST. CL = 629.83



33.0 WEST R.O.W.

33.0 EAST R.O.W.

40.0 30.0 20.0 10.0 Q 10.0 20.0 30.0 40.0

Drawing File: W:\Projects\55508290 - St. Charles Rd\SECT_ST CHARLES\SECT_ST CHARLES.dwg Dec 03, 2009 - 11:47am

HANCOCK ENGINEERING
 Civil Engineers
 Municipal Consultants
 Established 1911
 9123 Riverside Road
 Westchester, Illinois 60591-2780
 Phone: 708/690-0200
 Fax: 708/690-1232

USER NAME -	DESIGNED - MK/SBC	REVISED -
PLOT SCALE -	DRAWN - MK/LEV	REVISED -
PLOT DATE -	CHECKED - SBC/JGMV	REVISED -
	DATE - 11-30-09	REVISED -

**STATE OF ILLINOIS
DEPARTMENT OF TRANSPORTATION**

**STATION CROSS SECTIONS
9th AVENUE**

SCALE: 1"=10'H/V. SHEET NO. 1 OF 1 SHEETS STA. 8+00 TO STA. 10+45

F.A.U. RTE.	SECTION	COUNTY	TOTAL SHEETS	SHEET NO.
1397	09-00129-00-PV	COOK	103	103
CONTRACT NO. 63428			FED. ROAD DIST. NO. 1 ILLINOIS FED. AID PROJECT M-9003 (267)	
(BOOK NOS. 1579, 1583, 1589) E.H.E PROJECT NO. 565-08-29001				