

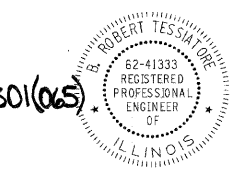
F.A.P. R.E.	SECTION	COUNTY	TOTAL SHEETS	SHEET NO.
301	43T&M	Jo Daviess	80	1

STATE OF ILLINOIS
DEPARTMENT OF TRANSPORTATION
DIVISION OF HIGHWAYS

**PROPOSED
HIGHWAY PLANS**

FAP ROUTE 301 (US 20)

SECTION 43T&M
PROJECT ACNHF-ACHSIP 0301(065)
JO DAVIESS COUNTY
C-92-053-09



B. ROBERT TESSITORE, P.E., S.E.
EXPIRES: NOVEMBER 30, 2011
FOR SHEETS 1-43, 52-80



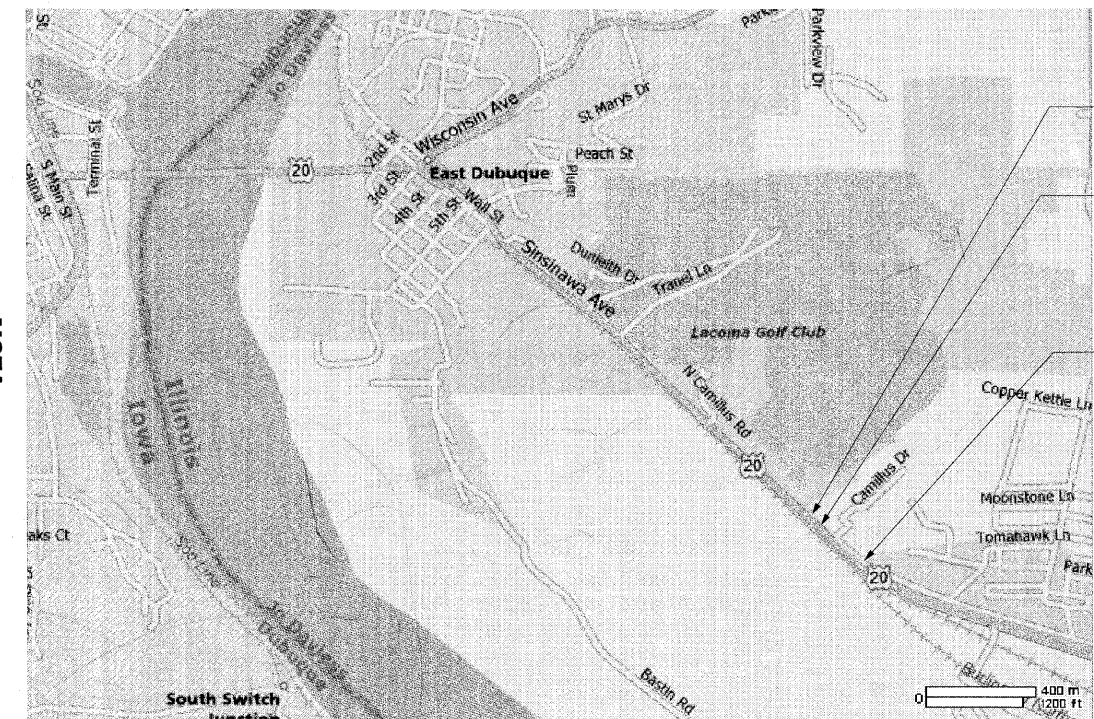
BRIAN J. MALONE, P.E., S.E.
EXPIRES: NOVEMBER 30, 2010
FOR SHEETS 44-51

D-92-117-06



LOCATION OF SECTION INDICATED THIS: - [Black Box] -

R2W-MENOMINEE TOWNSHIP SECT28



SECTION BEGINS
STA. 99 + 27

EXISTING: # SN 043-1004
PROPOSED: # SN 043-1076
STA. 107 + 67.5 REMOVE EXISTING
BOX CULVERT (14'x 8'-6")
CONSTRUCT A CAST-IN-PLACE BOX
CULVERT (16'x8") (LENGTH = 89'-6")
STA. 107 + 38.4 TO STA. 107 + 96.4

SECTION ENDS
STA. 114 + 33

NET LENGTH = 1506 FT = 0.29 MILES
GROSS LENGTH OF IMPROVEMENT 3817 FT = 0.72 MILES

INDEX OF SHEETS

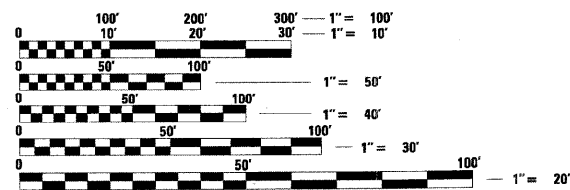
- COVER
- GENERAL NOTES
- 4- HORIZONTAL AND VERTICAL CONTROL
- 5- SUMMARY OF QUANTITIES
- 7-12- SCHEDULE OF QUANTITIES /EARTHWORK SCHEDULE
- 13- PATCHING SCHEDULE
- 14- BITUMINOUS SCHEDULE
- 15-17- TYPICAL SECTIONS
- 18- MOT STAGE 1, 2 & 5 TYPICAL SECTIONS
- 19- MOT STAGE 3 & 4 TYPICAL SECTIONS
- 20-21- MAINTENANCE OF TRAFFIC STAGE 1 PLAN
- 22-24- MAINTENANCE OF TRAFFIC STAGE 2 PLAN
- 25-27- MAINTENANCE OF TRAFFIC STAGE 3 PLAN
- 28-30- MAINTENANCE OF TRAFFIC STAGE 4 PLAN
- 31-33- MAINTENANCE OF TRAFFIC STAGE 5 PLAN
- 34-36- EXISTING PLAN AND PROFILE SHEETS
- 37-39- PROPOSED PLAN AND PROFILE SHEETS
- 40- GRADING PLAN
- 41- EROSION CONTROL PLAN
- 42- LANDSCAPING PLAN
- 43- PAVEMENT MARKING PLAN
- 44- GENERAL PLAN & ELEVATION
- 45- STAGED CONSTRUCTION
- 46- BOX PLAN & ELEVATION I
- 47- BOX PLAN & ELEVATION II
- 48- BAR SPLICER ASSEMBLY DETAILS
- 49- TEMPORARY CONCRETE BARRIER FOR STAGE CONSTRUCTION
- 50- BORING LOG, B-1
- 51- BORING LOG, B-2
- 52-63- DISTRICT 2 STANDARD SHEETS
- 64-70- CROSS SECTIONS FOR TEMPORARY PAVEMENT
- 71-80- PROPOSED CROSS SECTIONS

IDOT DIST 2 STANDARDS

STD. NO.	TITLE
2.1	STORM WATER POLLUTION PREVENTION PLAN
10.2	INLET SPECIAL
13.2	FRAME AND GRADE FOR INLET SPECIAL
17.4	DETAILS FOR CURB & GUTTER REPLACEMENT AT INLET
17.4A	DETAILS FOR CURB & GUTTER REPLACEMENT
20.4	GRADING AROUND WINGWALLS
22.1	ENTRANCE AND SIDE ROADS WITH 2.4m (8') HOT-MIX ASPHALT SHOULDERS
23.4	DETAIL OF HOT-MIX ASPHALT SHOULDERS AT GUARDRAIL
23.4a	HOT-MIX ASPHALT SHOULDERS
29.2	EROSION CONTROL DETAILS FOR SILT FENCE
32.4	PAVEMENT PATCHING FOR HOT-MIX ASPHALT SURFACED PAVEMENT
37.4	DELINEATOR AND POST ORIENTATION
39.1	TRAFFIC CONTROL TYPICAL WEAVE
39.2	INFORMATIONAL WARNING SIGNS (FOR NARROW TRAVEL LANES)
41.1	TYPICAL PAVEMENT MARKINGS
50.4	TYPICAL BENCHING DETAIL ON EXISTING EMBANKMENT
66.2	WITNESS MARKER & PERMANENT SURVEY MARKERS, TYPE II
89.4	LETTERING FOR NAME PLATE
91.2	ROUGH GROOVED SURFACE SIGN
96.4	DRAIN FOR AGGREGATE BASE COURSE

IDOT HIGHWAY STANDARDS

STD NO.	TITLE
001001-02	AREAS OF REINFORCEMENT
280001-05	TEMPORARY EROSION CONTROL SYSTEMS
420701-02	PAVEMENT FABRIC
442101-07	CLASS B PATCHES
482011-03	HMA SHLD. STRIPS/SHLDS. WITH RESURFACING OR WIDENING AND RESURFACING PROJECTS.
515001-03	NAME PLATE FOR BRIDGES
542301-02	PRECAST REINFORCED CONCRETE FLARED END SECTION
542311-01	GRATING FOR CONCRETE FLARED END SECTION 24" THRU 54" PIPE
606001-04	CONCRETE CURB TYPE B & COMBINATION CONCRETE CURB AND GUTTER
606301-04	PC CONCRETE ISLANDS & MEDIANS
630001-08	STEEL PLATE BEAM GUARDRAIL
630101-08	GUARDRAIL MOUNTED ON EXISTING CULVERTS
630301-05	SHOULDER WIDENING FOR TYPE 1 (SPECIAL) GUARDRAIL TERMINALS
631011-06	TRAFFIC BARRIER TERMINAL, TYPE 2
635001-01	DELINEATORS
635006-03	REFLECTOR AND TERMINAL MARKER PLACEMENT
635011-02	REFLECTOR MARKER AND MOUNTING DETAILS
701006-03	TRAFFIC CONTROL AND PROTECTION
701101-02	OFF-RD OPERATIONS, MULTI LANE, 15' TO 24" FROM PAVEMENT EDGE
701400-04	APPROACH TO LANE CLOSURE, FREEWAY/ EXPRESSWAY
701401-05	TRAFFIC CONTROL AND PROTECTION
701421-02	LANE CLOSURE, MULTI LANE, DAY OPERATIONS ONLY. FOR SPEEDS ≥ 45 MPH TO 55 MPH
701422-02	LANE CLOSURE, MULTI LANE, FOR SPEEDS ≥ 45 MPH TO 55 MPH
701426-03	LANE CLOSURE, MULTI LANE, INTERMITTENT OR MOVING OPERATION FOR SPEEDS ≥ 45 MPH TO 55 MPH
701431-05	LANE CLOSURE, MULTI LANE, UNDIV. WITH CROSSOVER, FOR SPEEDS ≥ 45 MPH TO 55 MPH.
701901-01	TRAFFIC CONTROL DEVICES
704001-06	TEMPORARY CONCRETE BARRIER
720011-01	METAL POSTS FOR SIGNS, MARKERS & DELINEATORS
728001-01	TELESCOPING STEEL SIGN SUPPORT
729001-01	APPLICATIONS OF TYPES A & B METAL POSTS (FOR SIGNS & MARKERS)
780001-02	TYPICAL PAVEMENT MARKINGS
781001-03	TYPICAL APPLICATION RAISED REFLECTIVE PAVEMENT MARKERS



FULL SIZE PLANS HAVE BEEN PREPARED USING STANDARD ENGINEERING SCALES. REDUCED SIZED PLANS WILL NOT CONFORM TO STANDARD SCALES. IN MAKING MEASUREMENTS ON REDUCED PLANS, THE ABOVE SCALES MAY BE USED.

J.U.L.I.E.
JOINT UTILITY LOCATION INFORMATION FOR EXCAVATION
1-800-892-0123

CONTRACT NO. 64C68

STATE OF ILLINOIS
DEPARTMENT OF TRANSPORTATION
DIVISION OF HIGHWAYS

SUBMITTED Dec. 4, 2009

Shane F. Ryan
DEPUTY DIRECTOR OF HIGHWAYS, REGION ENGINEER

January 29, 2010
Scott E. Stitt P.E.
Acting ENGINEER OF DESIGN AND ENVIRONMENT

January 29, 2010
Christine M. Reed
DIRECTOR OF HIGHWAYS, CHIEF ENGINEER

Wight

Wight & Company
2500 North Frontage Road, Darien, IL 60561
630.969.7000 630.969.7979 fax
Design Firm Registration 184-000451

PRINTED BY THE AUTHORITY
OF THE STATE OF ILLINOIS

DISTRICT TWO - BUREAU OF DESIGN SENIOR SQUAD LEADER: SAM ABDULLAH (815-284-5935)
 SQUAD LEADER: COREY CONDERMAN (815-284-5936)
 PROJECT ENGINEER: MASOOD AHMAD
 CONSULTANT: BOB TESSITORE (830) 969-7000