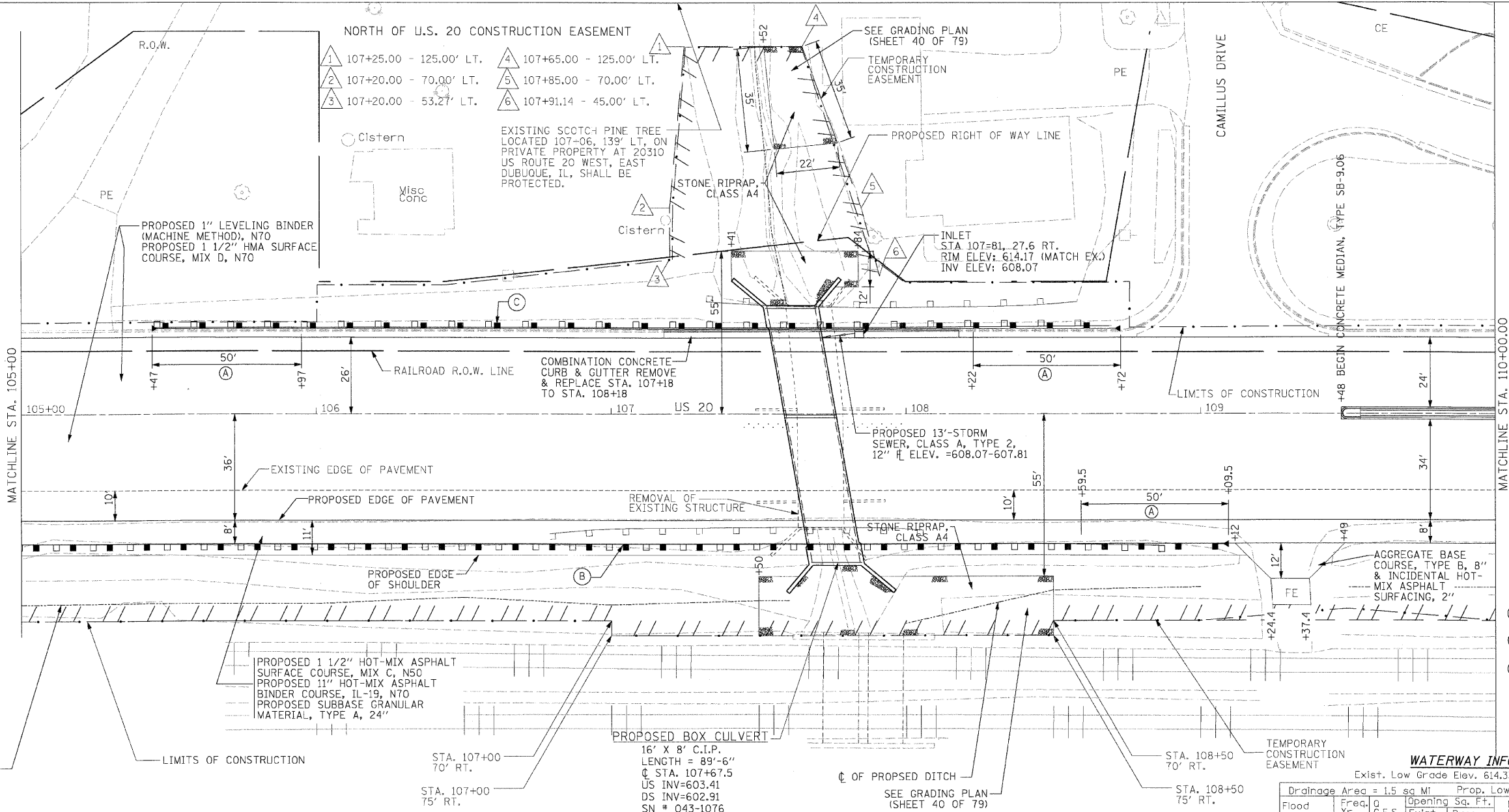


F.A.P. RTE.	SECTION	COUNTY	TOTAL SHEETS	SHEET NO.
301	43I&M	Jodavless	80	38
STA. 99+27		TO STA. 114+33		
FED. ROAD DIST. NO. - ILLINOIS FED. AID PROJECT				

PLAN	DATE	BY
SURVEYED		
PLOTTED		
CHECKED		
NOTE BOOK		
NO. OF WAY CHECKED		
CAD FILE NAME		

PROFILE	DATE	BY
SURVEYED		
PLOTTED		
CHECKED		
NOTE BOOK		
NO. OF ATMS DWD		

PLOT DATE = 12/1/2009
 FILE NAME = I:\ENVS\64C68\43I&M\64C68_S11015.plt
 PLOT SCALE = #SCALE#
 USER NAME = #USER#



- GUARDRAIL**
- (A) TRAFFIC BARRIER TERMINAL, TYPE 1 (SPECIAL) TANGENT
 - (B) 355 LF STEEL PLATE BEAM GUARD RAIL, TYPE A
 - (C) 228 LF STEEL PLATE BEAM GUARD RAIL, TYPE A

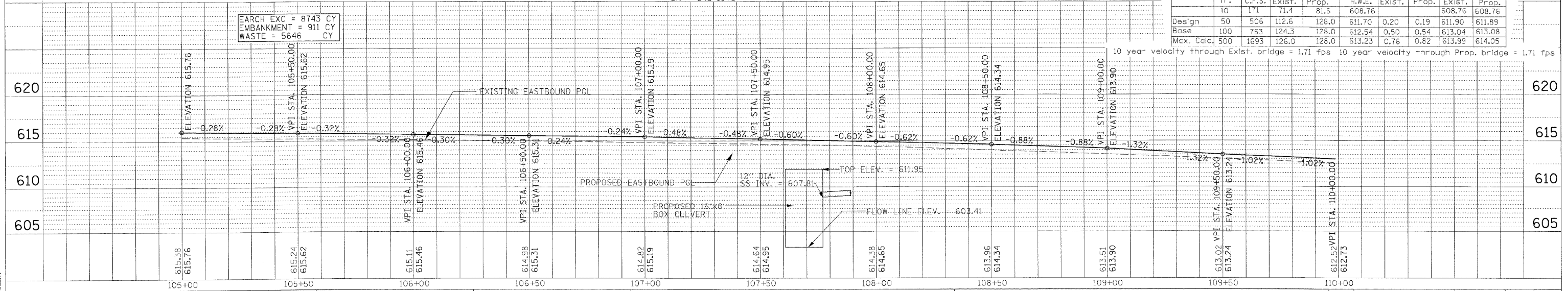
WATERWAY INFORMATION

Exist. Low Grade Elev. 614.33 @ Sta. 107+69.2

Flood Yr.	Freq. C.F.S.	Opening Sq. Ft.		Nat. Head - Ft.		Headwater El.		
		Exist.	Prop.	Exist.	Prop.	Exist.	Prop.	
10	171	71.4	81.6	608.76		608.76	608.76	
Design	50	506	112.6	128.0	611.70	0.20	0.19	611.90
Base	100	753	124.3	128.0	612.54	0.50	0.54	613.04
Mcx. Calc.	500	1693	126.0	128.0	613.23	C.76	0.82	613.99

10 year velocity through Exist. bridge = 1.71 fps 10 year velocity through Prop. bridge = 1.71 fps

SEARCH EXC = 8743 CY
 EMBANKMENT = 911 CY
 WASTE = 5646 CY



USER NAME = #USER#	DESIGNED KAC	REVISED -
PLLOT SCALE = #SCALE#	DRAWN BY: CKL/TMF	REVISED -
PLLOT DATE = 12/1/2009	CHECKED BY: KAC	REVISED -
	DATE: 11/13/2009	REVISED -

STATE OF ILLINOIS
DEPARTMENT OF TRANSPORTATION

US-20 /CAMILLUS DRIVE
PROPOSED PLAN & PROFILE

SCALE: 1" = 20'
 SHEET NO. 38 OF 80 SHEETS
 STA. 99+27 TO STA. 114+33

F.A.P. RTE.	SECTION	COUNTY	TOTAL SHEETS	SHEET NO.
301	43I&M	JODAVIESS	80	38
CONTRACT NO. 64C68				
FED. ROAD DIST. NO. - ILLINOIS FED. AID PROJECT				