

F.A.P. RTE.	SECTION	COUNTY	TOTAL SHEETS	SHEET NO.
55	(W-1-15d)BR-1	WINNEBAGO	59	1
FED. ROAD DIST. NO.	ILLINOIS	CONTRACT NO. 64D22		

FOR INDEX OF SHEETS, SEE SHEET NO. 2

STATE OF ILLINOIS
DEPARTMENT OF TRANSPORTATION
DIVISION OF HIGHWAYS

**PROPOSED
HIGHWAY PLANS**

PROJECT RS-0055(105)
FAS ROUTE 55 (IL 70)

SECTION (W-1-15d)BR-1

IL. ROUTE 70 BRIDGE REPLACEMENT
AND ROADWAY RECONSTRUCTION
OVER SOUTH BRANCH OF OTTER CREEK
WINNEBAGO COUNTY
C-92-194-09

D-92-062-07



LOCATION OF SECTION INDICATED THUS: - [shaded area] -

DESIGN DESIGNATION

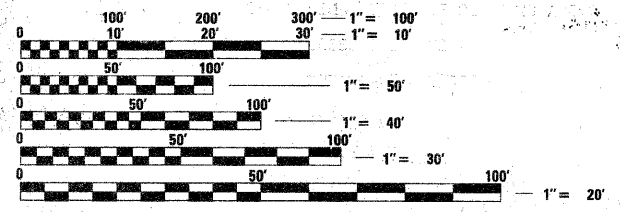
900 (31) MAJOR COLLECTOR 3.81 (FD-20)

TRAFFIC DATA

FAP ROUTE 55 (IL-70)
2011 ADT = 3,850
2031 ADT = 8,975
9.8% TRUCKS; 2031 DHV: 900
POSTED SPEED LIMIT (40MPH)

PROJECT LOCATED IN:

VILLAGE OF DURAND
DURAND TOWNSHIP (SECTION 15)
WINNEBAGO COUNTY



FULL SIZE PLANS HAVE BEEN PREPARED USING STANDARD ENGINEERING SCALES. REDUCED SIZED PLANS WILL NOT CONFORM TO STANDARD SCALES. IN MAKING MEASUREMENTS ON REDUCED PLANS, THE ABOVE SCALES MAY BE USED.

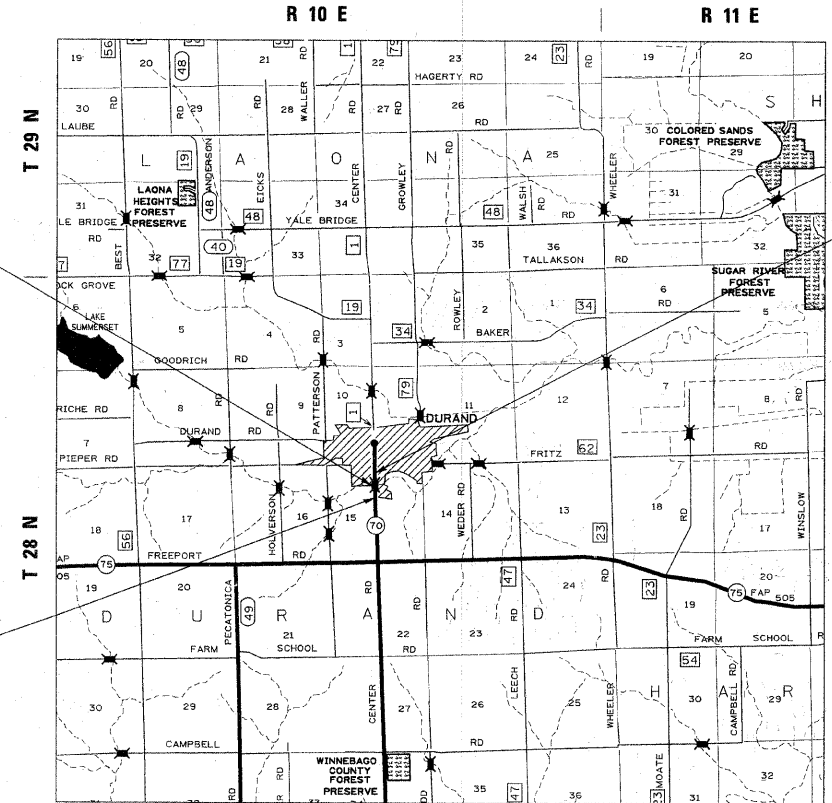
J.U.L.I.E.
JOINT UTILITY LOCATION INFORMATION FOR EXCAVATION
1-800-892-0123
OR 811

IDOT PROJECT MANAGER - MR. COREY CONDERMAN (815) 284-5936
HOH PROJECT MANAGER - MR. GERALD BERNER (312) 424-3650

CONTRACT NO. 64D22

IL - 70 BRIDGE
OVER OTTER CREEK
STR. NO. 101-0086
REMOVAL AND REPLACEMENT OF
SUPERSTRUCTURE AND
ROADWAY RECONSTRUCTION

PROJECT ENDS
STA. 66 + 00



PROJECT BEGINS
STA. 57 + 65

FINAL
11-30-09

BRENT A. PORFILI
REGISTERED PROFESSIONAL ENGINEER
STATE OF ILLINOIS
License exp. 11/30/2011

11-30-09
Date
STATE OF ILLINOIS
MOHAMMAD M. HUSAIN
REGISTERED PROFESSIONAL ENGINEER
11-30-2010
signature

HOH HARRY O. HEFTER-ASSOCIATES, INC.
DESIGN AND CONSULTING ENGINEERS
55 East Jackson Blvd.
Suite 600
Chicago, IL 60604
312-346-8131

PROJECT NUMBER
2944

STATE OF ILLINOIS
DEPARTMENT OF TRANSPORTATION
DIVISION OF HIGHWAYS
SUBMITTED Dec. 4, 2009
Deputy Director of Highways, Region Engineer
January 29, 2010
Acting Engineer of Design and Environment
January 29, 2010
Director of Highways, Chief Engineer

PRINTED BY THE AUTHORITY
OF THE STATE OF ILLINOIS
DISTRICT 2

SCALE: 1" = 1 MILE
LOCATION MAP
GROSS & NET LENGTH = 835 FT (0.158 MILES)