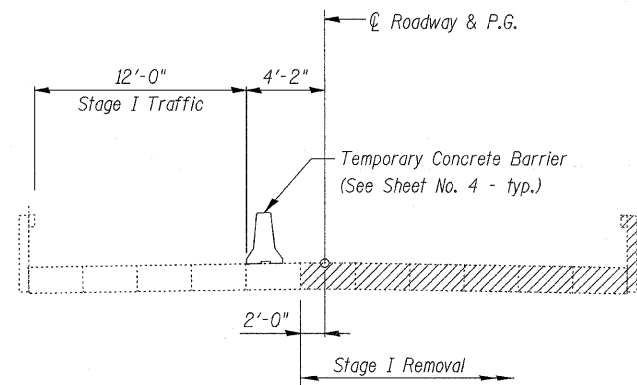
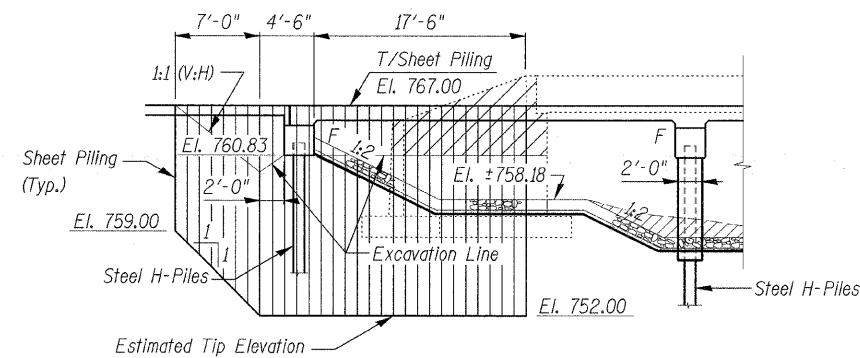


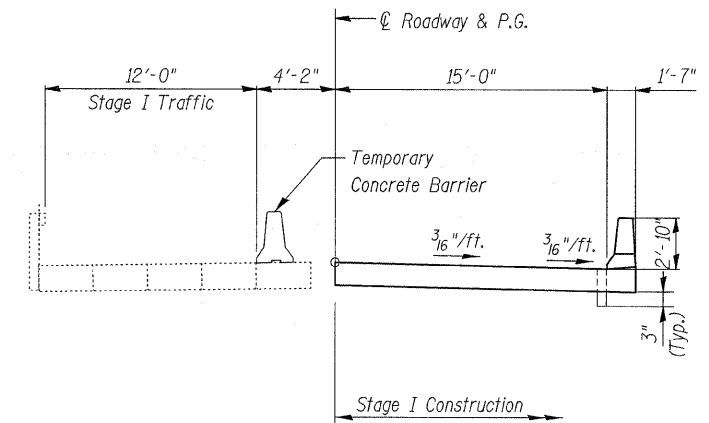
STATE OF ILLINOIS
DEPARTMENT OF TRANSPORTATION



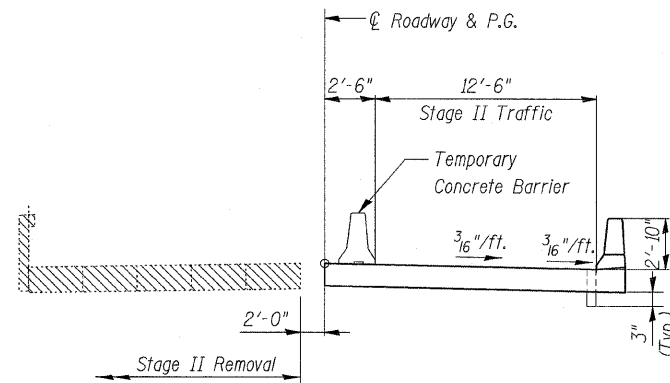
STAGE I REMOVAL
(Looking South)



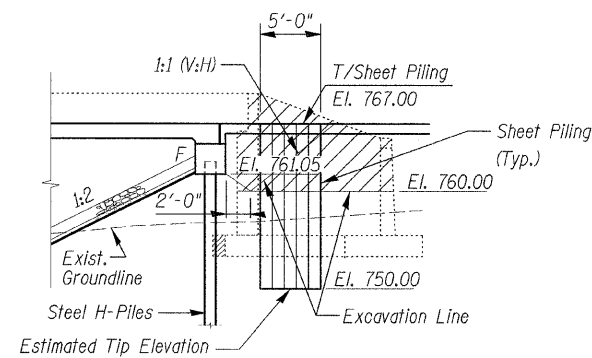
**NORTH ABUTMENT
TEMPORARY SHEET PILING**



STAGE I CONSTRUCTION



STAGE II REMOVAL



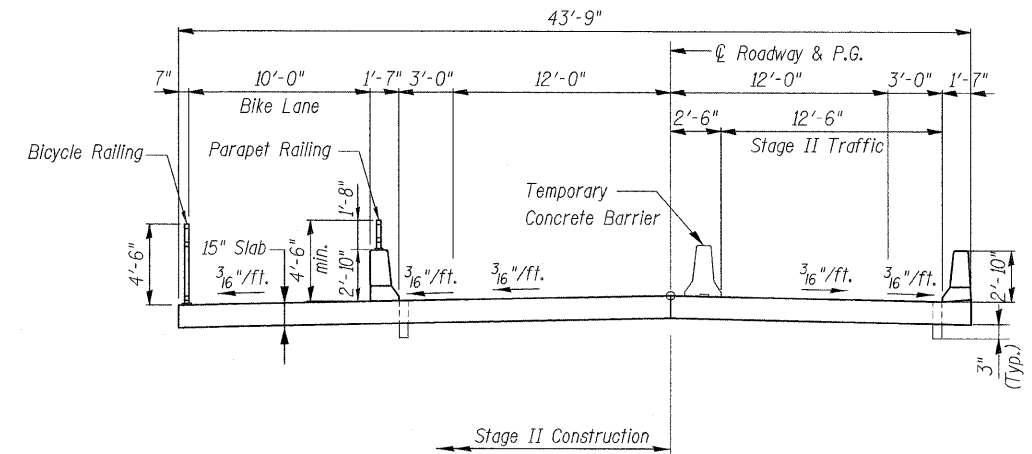
**SOUTH ABUTMENT
TEMPORARY SHEET PILING**

NOTE:
Hatched areas indicate removal
of Existing Structure.

Min. Section Modulus of Sheet Piling = 4.50 in³/ft.
Min. Embedment depth - N. Abut. = 9'-0"
Min. Embedment depth - S. Abut. = 10'-0"
Required Temporary Sheet Piling = 496 Sq.Ft.
(Total for both Abutments)

NOTES

1. If the Contractor chooses to alter the temporary cantilevered sheet piling design requirements shown on the plans, a design submittal including plan details and calculations will be required for review and acceptance by the Engineer.
2. The Contractor shall connect the first sheet to the existing abutment wall to ensure stability of sheets driven to the top of the existing footing. This connection shall be reviewed and accepted by the Engineer and included in the cost for Temporary Sheet Piling.



STAGE II CONSTRUCTION

**STAGE CONSTRUCTION
DETAILS
STRUCTURE NO. 101-0191**

DESIGNED	MMH
CHECKED	RAD
DRAWN	R.VEJAR
CHECKED	RAD

HOH ENGINEER, INC.
55 E. Jackson Blvd.
Chicago, Illinois 60604
312.346.8131
PROJECT # 2945

SHEET NO. 3 21 SHEETS	F.A.S. RTE.	SECTION	COUNTY	TOTAL SHEETS	SHEET NO.
	55	(W-1-15d)BR-1	WINNEBAGO	59	23
CONTRACT NO. 64D22					
FED. ROAD DIST. NO.		ILLINOIS FED. AID PROJECT			