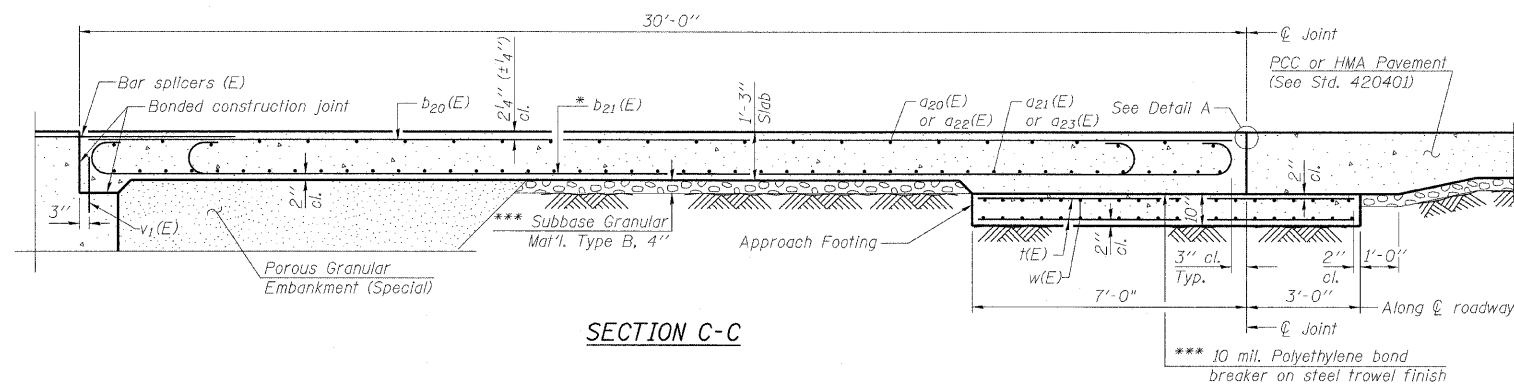
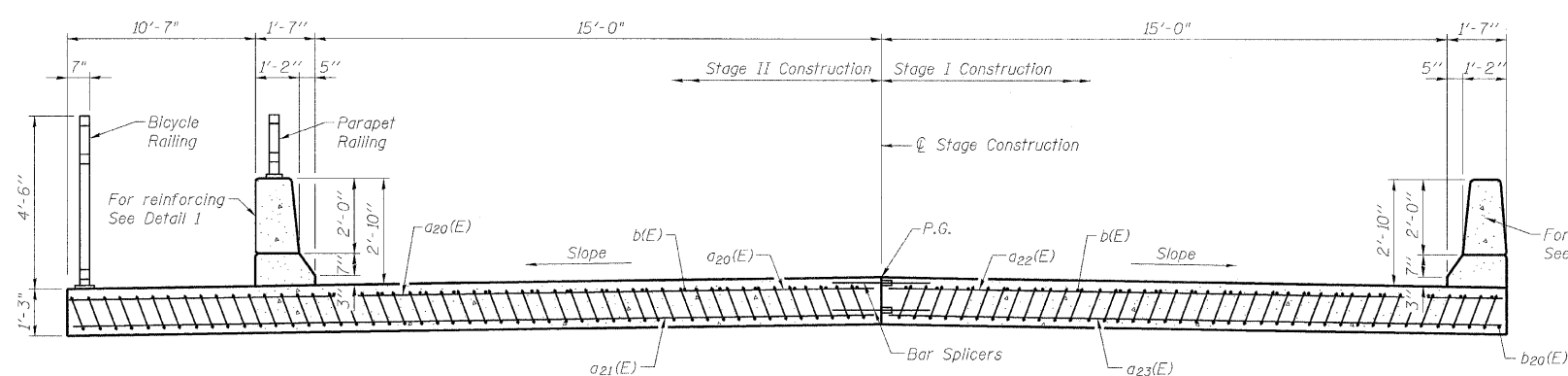


STATE OF ILLINOIS
DEPARTMENT OF TRANSPORTATION



SECTION C-C

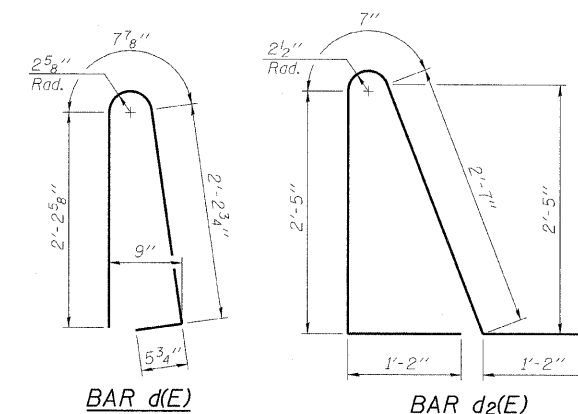


SECTION D-D

(See Plan for dimensions not shown)

NOTES:

Approach slab and parapet concrete shall be paid for as Concrete Superstructure. Approach Footing concrete shall be paid for as Concrete Structures. Reinforcement shall be paid for as Reinforcement Bars, Epoxy Coated. For $v_1(E)$ bar details, see sheet 13 of 21. The approach footing maximum applied service bearing pressure (Q_{max}) = 2.0 ksf. For bar splicer details, see sheet 18 of 21. Cost of excavation for approach footing included with Concrete Structures. For Porous Granular Embankment (Special) and drainage treatment details, see sheet 1 of 21.



BAR d(E)

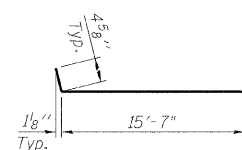
BAR d2(E)

TWO APPROACHES
BILL OF MATERIAL

Bar	No.	Size	Length	Shape
a20(E)	50	#4	26'-10"	—
a21(E)	92	#5	26'-10"	—
a22(E)	50	#4	15'-11"	—
a23(E)	92	#5	15'-7"	—
b20(E)	88	#4	29'-8"	—
b21(E)	208	#9	29'-9"	—
b22(E)	4	#4	14'-8"	—
d(E)	102	#5	5'-7"	U
d2(E)	102	#5	7'-11"	U
e20(E)	42	#4	14'-8"	—
e21(E)	2	#8	14'-8"	—
e22(E)	2	#8	29'-8"	—
e23(E)	2	#4	29'-8"	—
t(E)	180	#4	9'-8"	—
w(E)	80	#5	26'-2"	—
w1(E)	80	#5	15'-7"	—
Concrete Superstructure		Cu. Yd.	120.1	
Concrete Structures		Cu. Yd.	26.2	
Reinforcement Bars, Epoxy Coated		Pound	35,120	

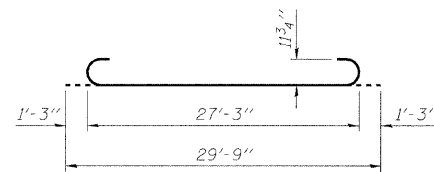
For Bar Splicers, see Sheet 18 of 21.

BRIDGE APPROACH SLAB
DETAILS SHEET 2
STRUCTURE NO. 101-0191

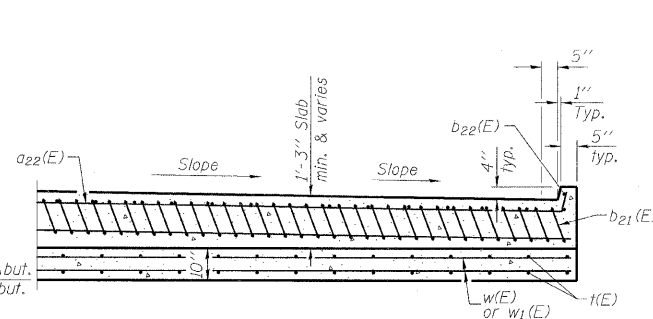


BAR a22(E)

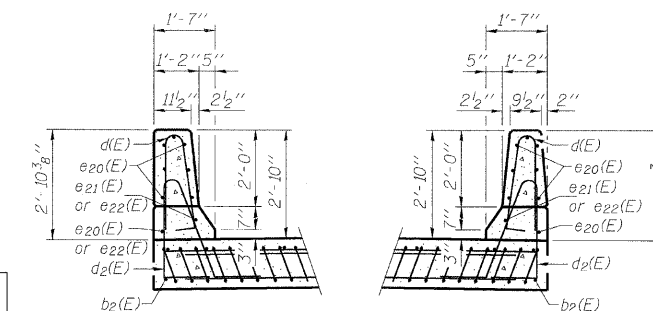
Bend at Curb only



BAR b21(E)

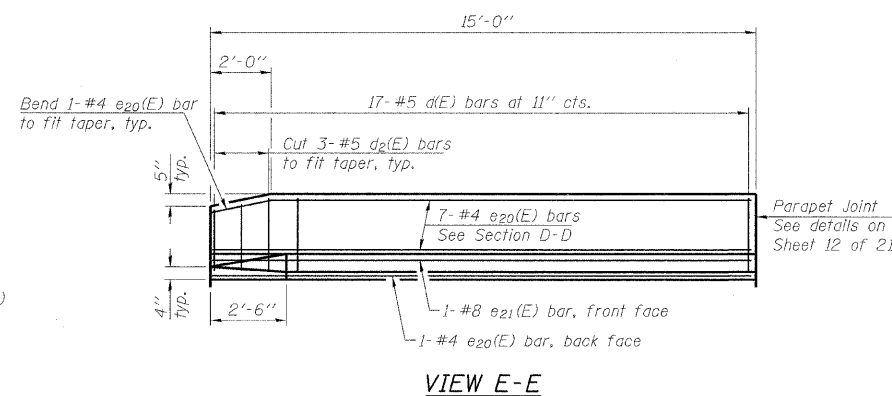


SECTION
AT APPROACH FOOTING

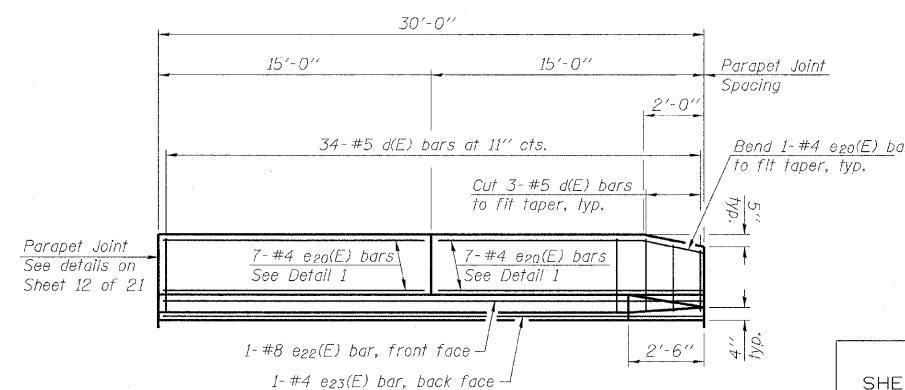


DETAIL 1

DETAIL 2



VIEW E-E



VIEW G-G

DESIGNED	MMH
CHECKED	RAD
DRAWN	R.VEJAR
CHECKED	RAD

HOH
ENGINEERS, INC.
56 E. Jackson Blvd.
Chicago, Illinois 60604
312.346.8131
PROJECT # 2845

SHEET NO. 10 21 SHEETS	F.A.S. RTE.	SECTION	COUNTY	TOTAL SHEETS	SHEET NO.
	55	(W-1-15)BR-1	WINNEBAGO	59	30
FED. ROAD DIST. NO.			ILLINOIS	FED. AID PROJECT	
			CONTRACT NO. 64D22		