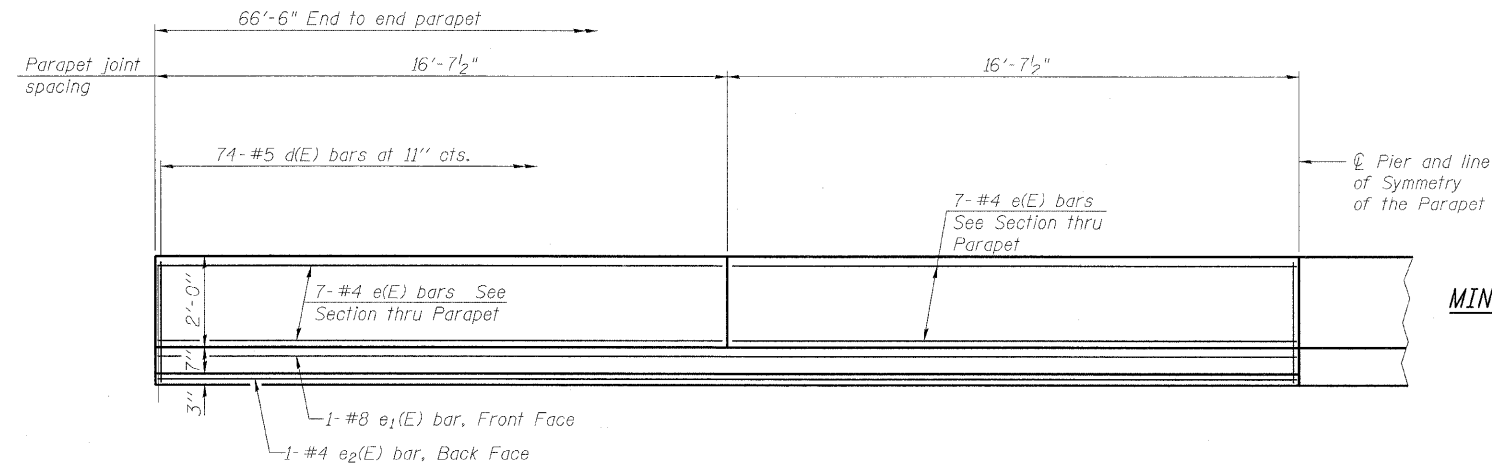
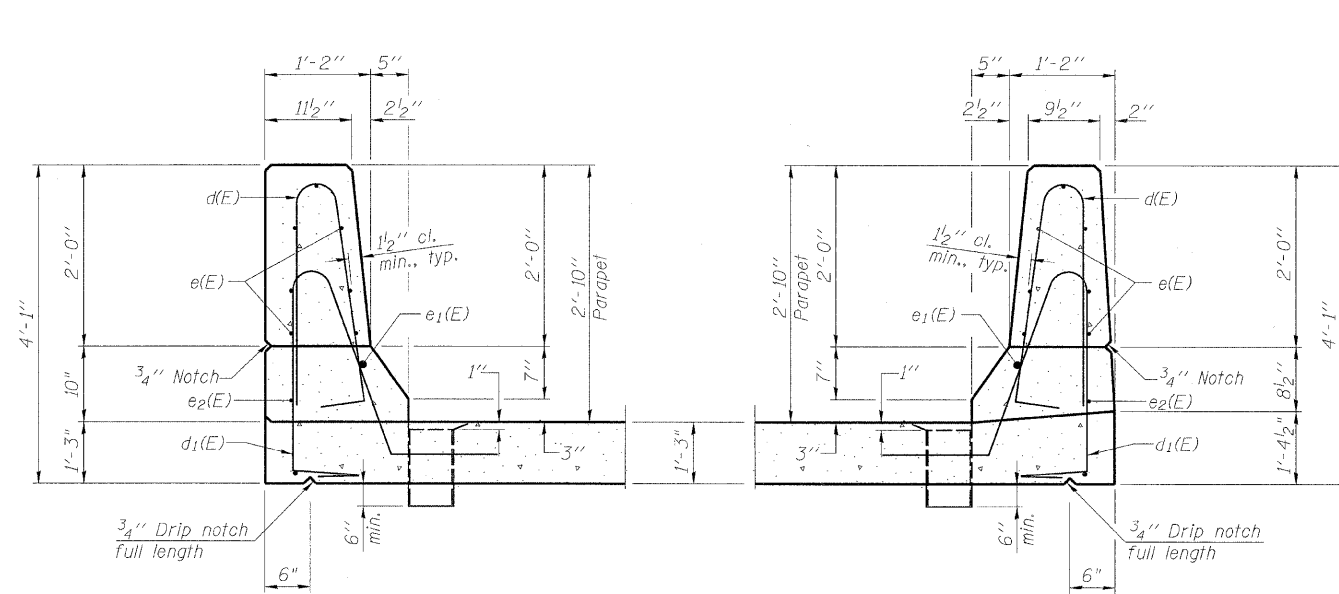


STATE OF ILLINOIS  
DEPARTMENT OF TRANSPORTATION



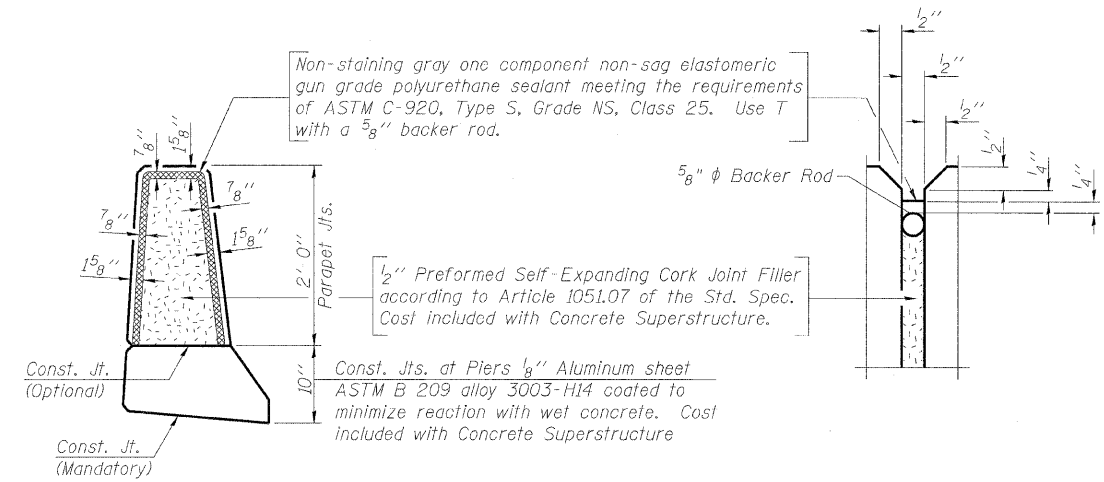
**MINIMUM BAR LAP**  
(Parapet)  
#4 bar = 1'-4"  
#8 bar = 3'-5"

**INSIDE ELEVATION OF PARAPET**  
(East Parapet is shown, West Parapet similar, opposite hand)



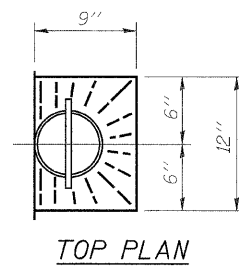
**DETAIL 3**  
**SECTION THRU PARAPET**

**DETAIL 4**  
**SECTION THRU PARAPET**

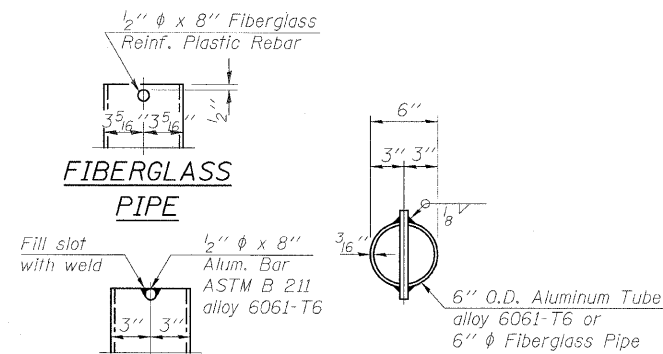


**PARAPET JOINT DETAILS**

Note:  
The exterior surfaces of the floor drains shall be coated or pigmented by the manufacturer with a color that matches the concrete. Fiberglass pipe shall conform to ASTM D 2996, with short-time rupture strength hoop tensile stress of 30,000 p.s.i. minimum.



**TOP PLAN**



**FIBERGLASS PIPE**

**ALUMINUM TUBE**

**TOP PLAN**  
(Showing Aluminum Tube)

DESIGNED	MMH
CHECKED	RAD
DRAWN	R.VEJAR
CHECKED	RAD

**HOH** ENGINEERS, INC.  
55 E. Jackson Blvd.  
Chicago, Illinois 60604  
312.346.8131  
PROJECT # 2845

S-I-D 10-1-08

**SUPERSTRUCTURE DETAILS**  
**SHEET 1**  
**STRUCTURE NO. 101-0191**

SHEET NO. 12	F.A.S. RTE.	SECTION	COUNTY	TOTAL SHEETS	SHEET NO.
	55	(W-1-15d)BR-1	WINNEBAGO	59	32
21 SHEETS	CONTRACT NO. 64D22				
FED. ROAD DIST. NO.		ILLINOIS	FED. AID PROJECT		