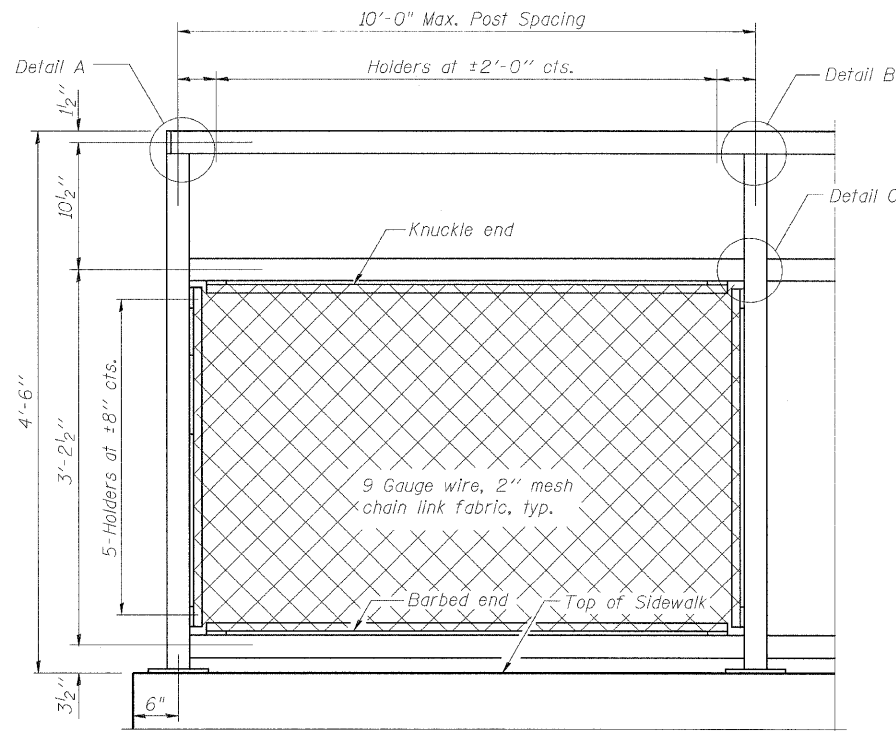
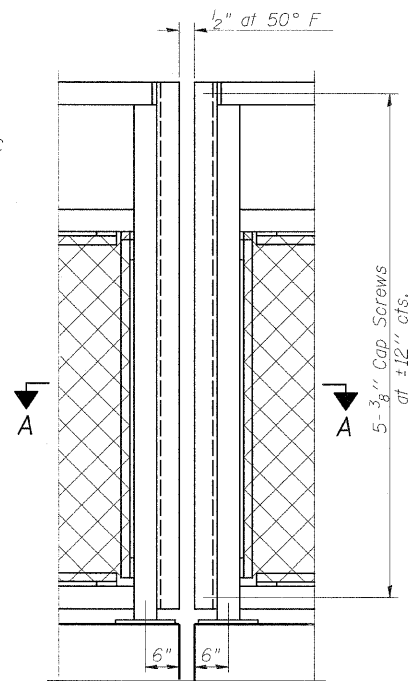


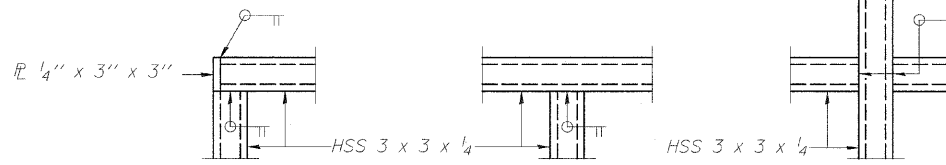
STATE OF ILLINOIS
DEPARTMENT OF TRANSPORTATION



BICYCLE RAILING



BICYCLE RAILING

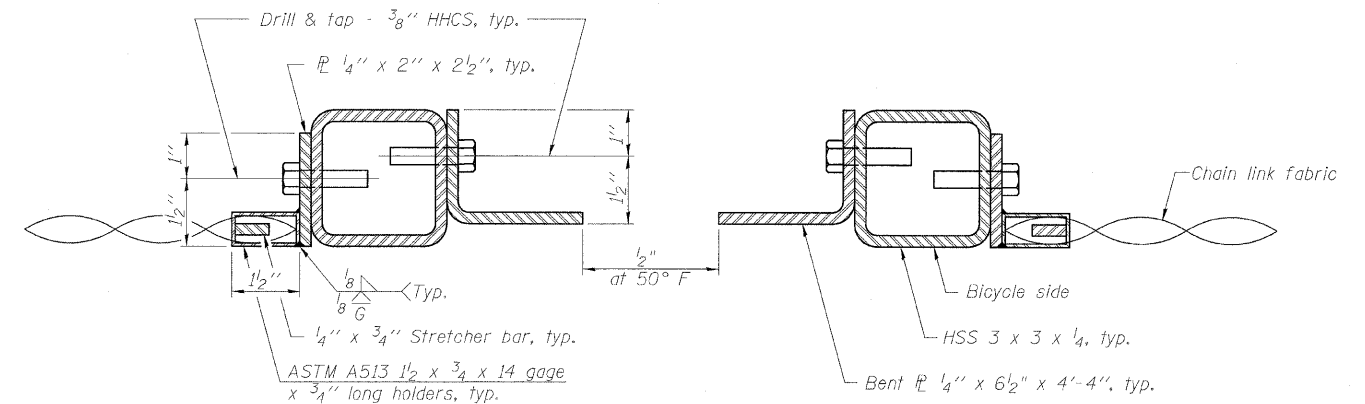


DETAIL A

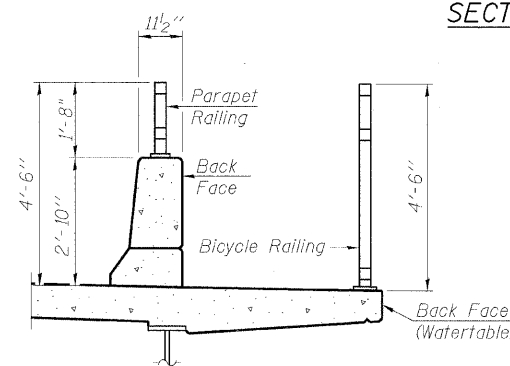
DETAIL B

DETAIL C

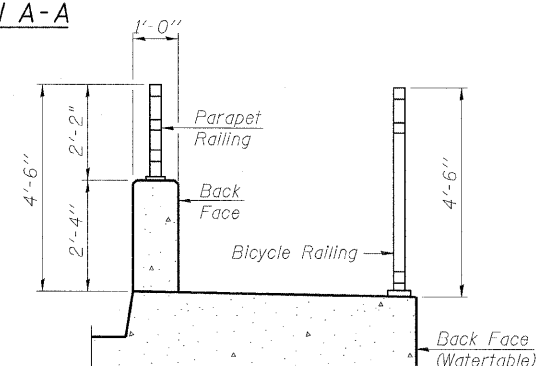
NOTE:
All steel rail elements shall be galvanized according to Article 509.05 of the Standard Specifications.



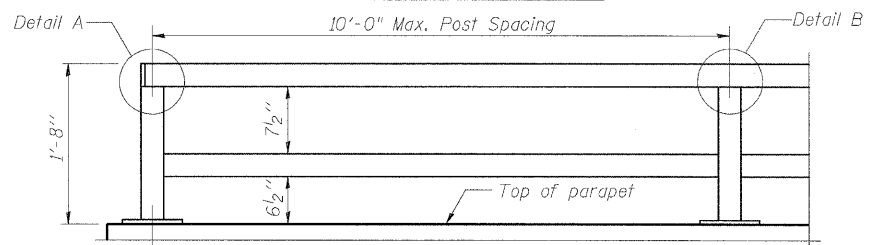
SECTION A-A



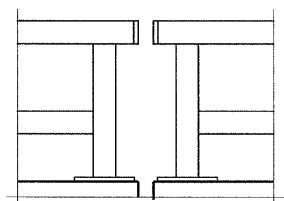
SECTION THRU DECK



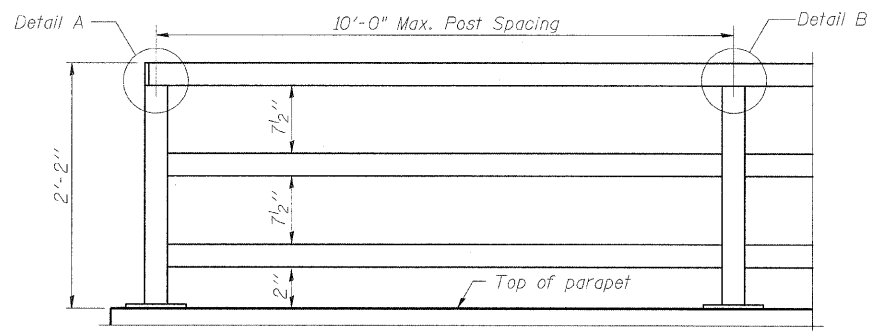
SECTION THRU SIDEWALK



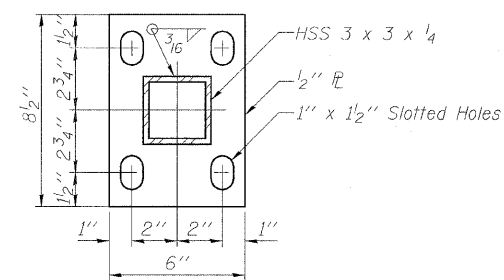
**PARAPET RAILING
ELEVATION**
(Inside Face of Two Element Rail)



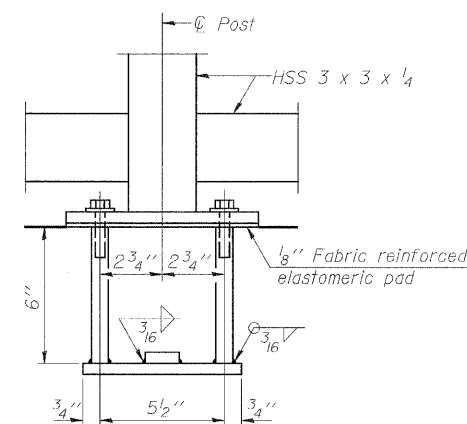
**PARAPET RAILING
ELEVATION AT EXPANSION JOINT**
(Two Element Rail Shown - Three Element Rail Similar)



**PARAPET RAILING
ELEVATION**
(Inside Face of Three Element Rail)

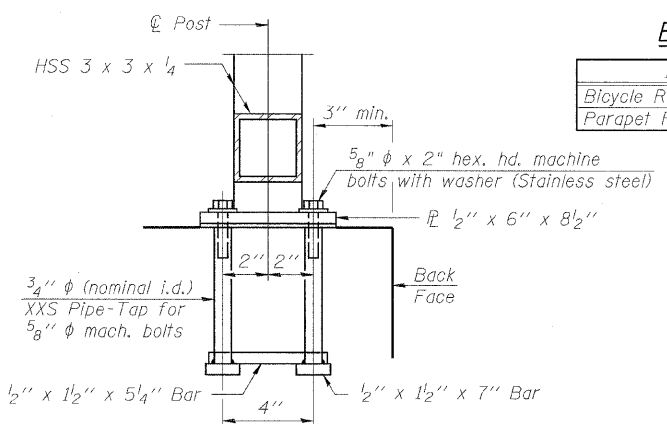


BASE PL



ANCHOR BOLT DETAILS

In lieu of the cast-in-place anchor device shown, the Contractor has the option of drilling and setting 5/8" φ anchor rods according to Article 509.06 of the Standard Specifications. Embedment shall be according to the manufacturer's specifications.



BILL OF MATERIAL

Item	Unit	Quantity
Bicycle Railing	Foot	128
Parapet Railing	Foot	128

DESIGNED	MMH
CHECKED	RAD
DRAWN	R.VEJAR
CHECKED	RAD

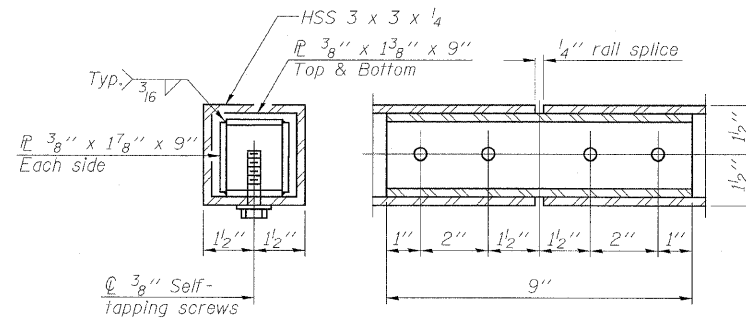
R-29

10-1-08

HOH
ENGINEERS, INC.
56 E. Jackson Blvd.
Chicago, Illinois 60604
312.346.8131

PROJECT # 2945

(10'-0" Maximum Post Spacing)



RAIL SPLICE

**BICYCLE RAILING
STRUCTURE NO. 101-0191**

SHEET NO. 14 21 SHEETS	F.A.S. RTE.	SECTION	COUNTY	TOTAL SHEETS	SHEET NO.
	55	(W-1-15d)BR-1	WINNEBAGO	59	34
FED. ROAD DIST. NO.		ILLINOIS	FED. AID PROJECT		
		CONTRACT NO. 64D22			