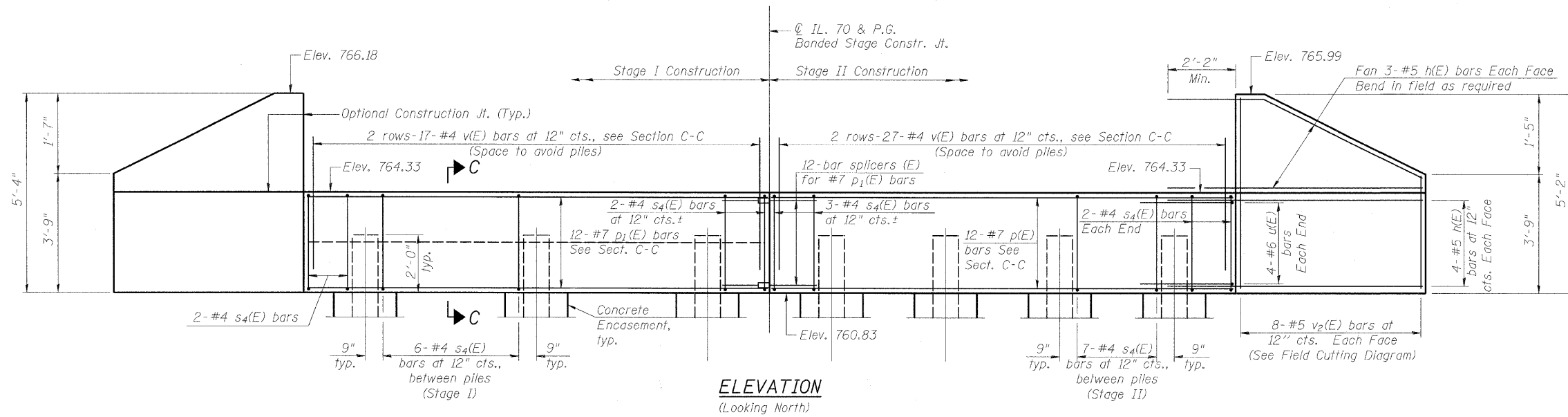
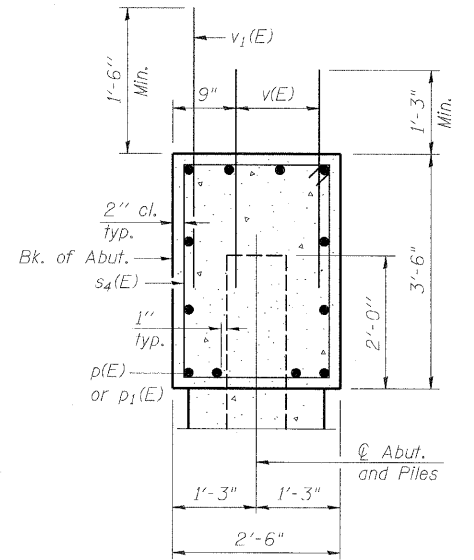


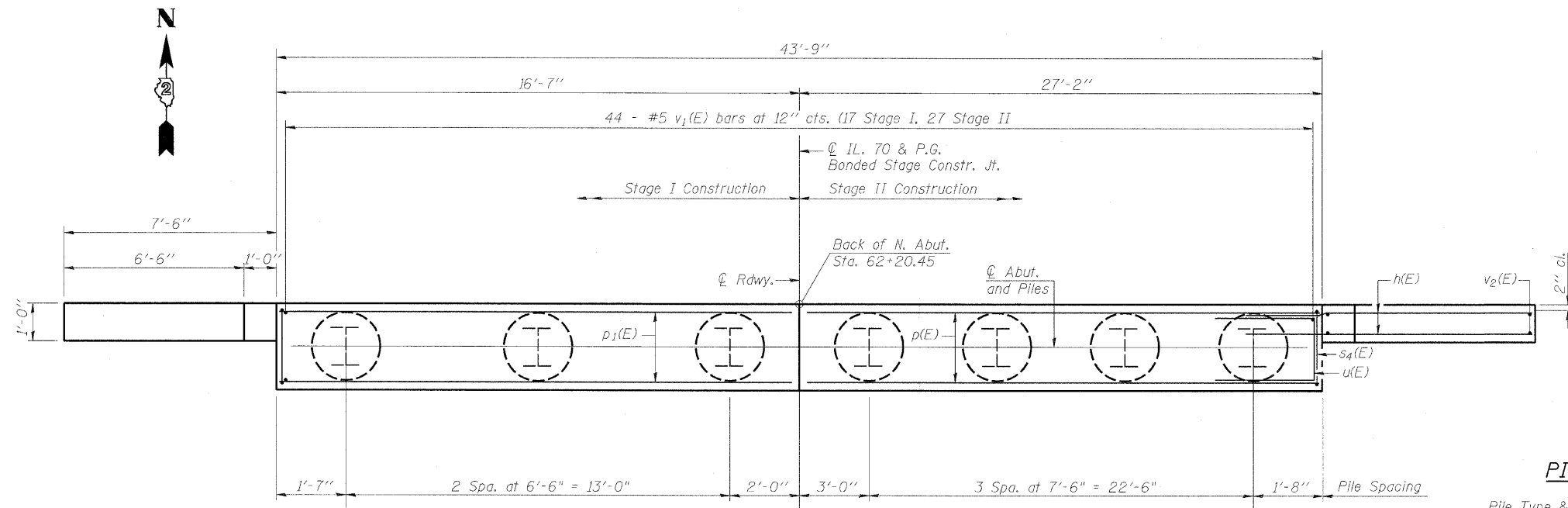
STATE OF ILLINOIS
DEPARTMENT OF TRANSPORTATION



ELEVATION
(Looking North)



SECTION C-C



PLAN

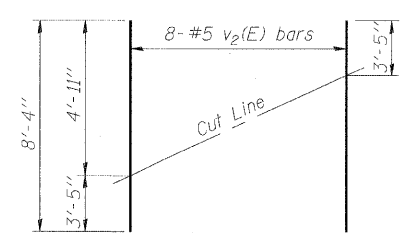
BILL OF MATERIAL

Bar	No.	Size	Length	Shape
h(E)	56	#5	9'-6"	—
p(E)	24	#7	26'-10"	—
p1(E)	24	#7	16'-3"	—
s4(E)	82	#4	11'-5"	□
u(E)	16	#6	11'-1"	—
v(E)	176	#5	2'-9"	—
v1(E)	88	#5	4'-4"	—
v2(E)	64	#5	8'-4"	—
Structure Excavation		Cu. Yd.	58	
Concrete Structures		Cu. Yd.	33.5	
Reinforcement Bars, Epoxy Coated		Pound	5,020	
Furnishing Steel Piles HP12x53		Foot	896	
Driving Piles		Foot	896	
Test Pile HP12x53		Each	1	
Concrete Encasement		Cu. Yd.	5.2	

PILE DATA

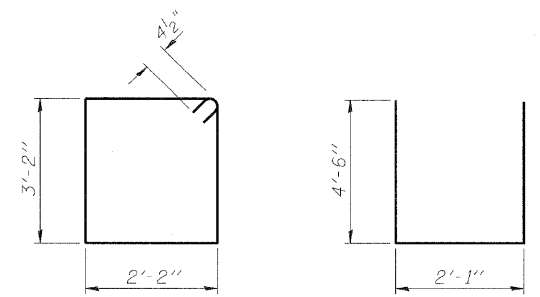
Pile Type & Size: Steel - HP12X53
Nominal Required Bearing: RN = 404 kips
Factored Resistance Available: RF = 156 kips
Estimated Pile Length: 79'-0"
Number of Production Piles: 7

For Bar Splicers, see sheet 18 of 21.
For details of piles and Concrete Encasement, see sheet 19 of 21.
Bill of material shown includes both abutments.



FIELD CUTTING DIAGRAM

Order v2(E) full length. Cut as shown and use remainder of bars in opposite face. (Each Wing Wall)



BAR s4(E)

BAR u(E)

DESIGNED	MMH
CHECKED	RAD
DRAWN	R.VEJAR
CHECKED	RAD
AI-0	10-1-08

HOH ENGINEERS, INC.
55 E. Jackson Blvd.
Chicago, Illinois 60604
312.346.8131
PROJECT # 2945

**NORTH ABUTMENT
STRUCTURE NO. 101-0191**

SHEET NO. 15 21 SHEETS	F.A.S. RTE.	SECTION	COUNTY	TOTAL SHEETS	SHEET NO.
	55	(W-1-15d)BR-1	WINNEBAGO	59	35
FED. ROAD DIST. NO.		ILLINOIS	FED. AID PROJECT	CONTRACT NO. 64D22	