

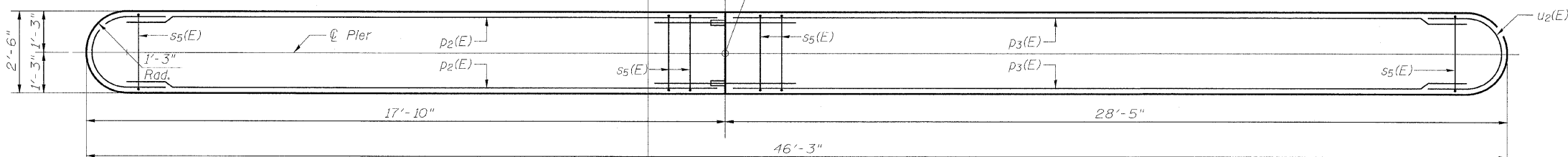
STATE OF ILLINOIS
DEPARTMENT OF TRANSPORTATION

Note:
Reinforcement bars designated (E) shall be epoxy coated
all edges shall have $\frac{3}{4}$ " chamfers unless otherwise noted.

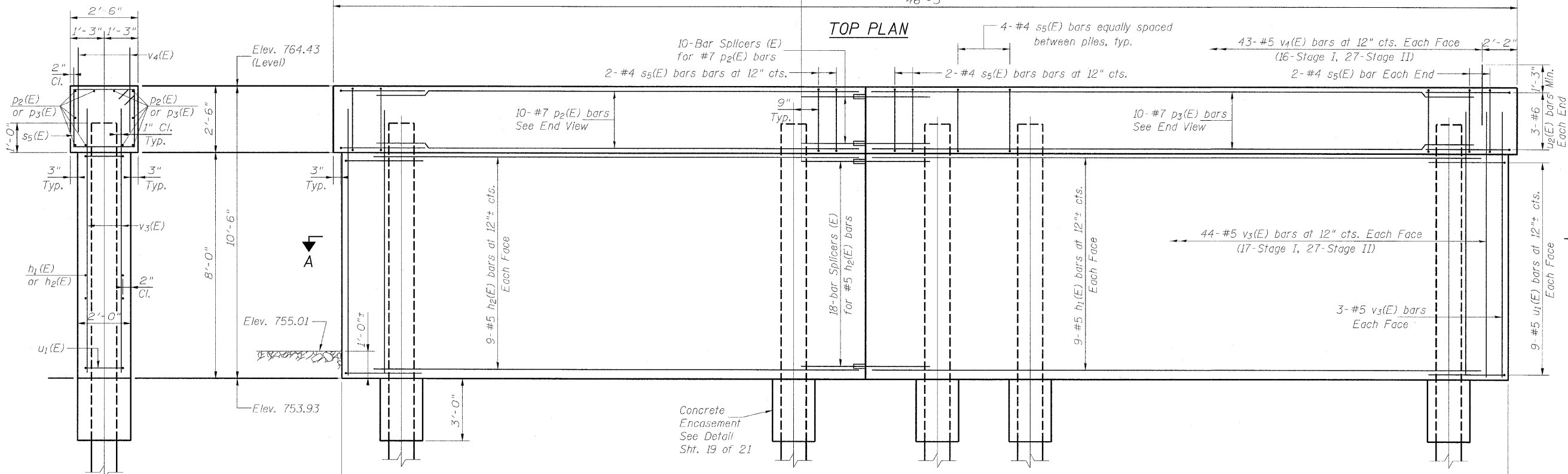


Stage I Const. Stage II Const.

Bonded Stage Jt.
℄ Roadway & P.G.
℄ Pier
Sta. 62+54.20



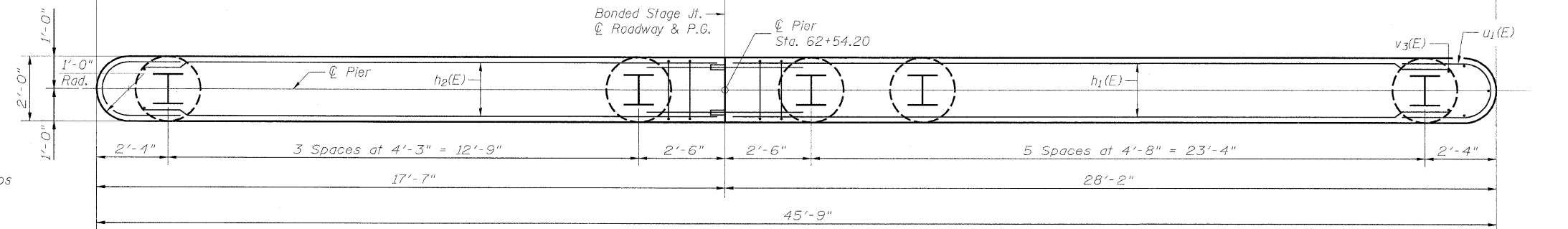
TOP PLAN



ELEVATION
(Looking North)

Stage I Const. Stage II Const.

Bonded Stage Jt.
℄ Roadway & P.G.
℄ Pier
Sta. 62+54.20



SECTION A-A

END VIEW

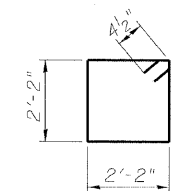
PILE DATA

Pile Type & Size: Steel - HP12X53
Nominal Required Bearing: RN = 372 kips
Factored Resistance Available: RF = 148 kips
Estimated Pile Length: 68'-0"
Number of Production Piles: 9
Number of Test Piles: 1

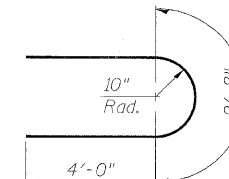
DESIGNED	MMH
CHECKED	RAD
DRAWN	R.VEJAR
CHECKED	RAD

HOH ENGINEERS, INC.
56 E. Jackson Blvd.
Chicago, Illinois 60604
312.348.8131
PROJECT # 2945

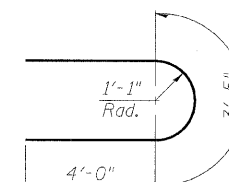
NOTE:
If a portion of the pier wall or concrete encasement is under water,
reinforcement may be placed underwater into forms. Concrete shall
be tremied according to article 503.08 of the Standard Specifications
to an elevation of 1'-0" above the water line at the time of construction.



BAR s5(E)



BAR u1(E)



BAR u2(E)

BILL OF MATERIAL

Bar	No.	Size	Length	Shape
h1(E)	18	#5	27'-0"	—
h2(E)	18	#5	16'-5"	—
p2(E)	10	#7	16'-5"	—
p3(E)	10	#7	27'-0"	—
s5(E)	40	#4	9'-5"	□
u1(E)	18	#6	10'-8"	U
u2(E)	6	#6	11'-5"	U
v3(E)	94	#5	9'-9"	—
v4(E)	86	#5	2'-9"	—
Structure Excavation		Cu. Yd.	7	
Concrete Structures		Cu. Yd.	37.7	
Reinforcement Bars, Epoxy Coated		Pound	3,550	
Furnishing Steel Piles HP12x53		Foot	612	
Driving Piles		Foot	612	
Test Pile HP12x53		Each	1	
Concrete Encasement		Cu. Yd.	3.5	

Bars indicated thus 1 x 3-#5 etc. indicates
1 line of bars with 3 lengths per line.
For Bar Splicers see Sheet 18 of 21.

PIER
STRUCTURE NO. 101-0191

SHEET NO. 17 21 SHEETS	F.A.S. RTE.	SECTION	COUNTY	TOTAL SHEETS	SHEET NO.
	55	(W-1-15d)BR-1	WINNEBAGO	59	37
FED. ROAD DIST. NO.			ILLINOIS	FED. AID PROJECT	
			CONTRACT NO. 64D22		