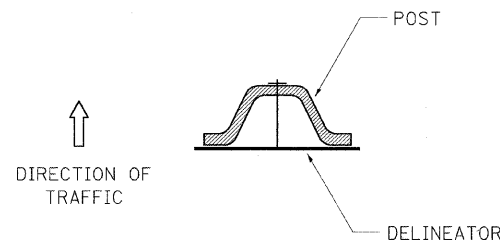


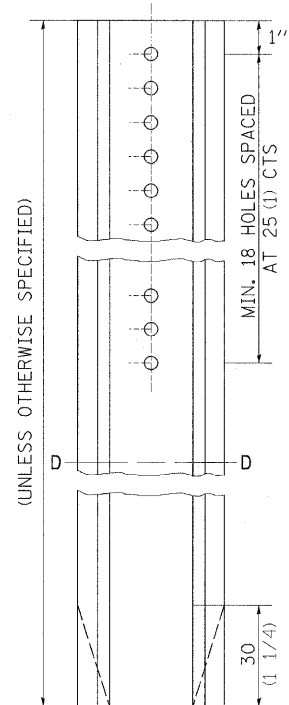
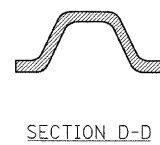
# DELINEATOR AND POST ORIENTATION



DELINEATORS SHALL BE INSTALLED ACCORDING TO STANDARD 635001 EXCEPT THAT THE POST SHALL BE ROTATED 180°. THE POST WILL HAVE THE WIDE SIDE FACING TRAFFIC AND THE DELINEATOR ATTACHED AS SHOWN ABOVE.

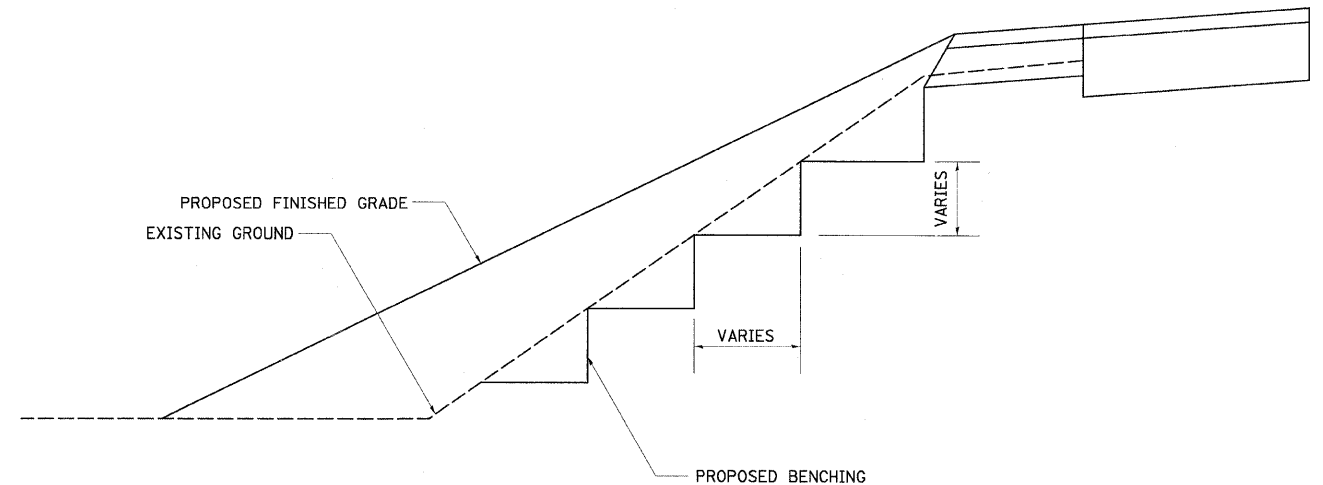
ALL DIMENSIONS ARE IN MILLIMETERS (INCHES) UNLESS OTHERWISE NOTED.

REVISED - 11-01-07



DELINEATOR AND POST ORIENTATION 37.4

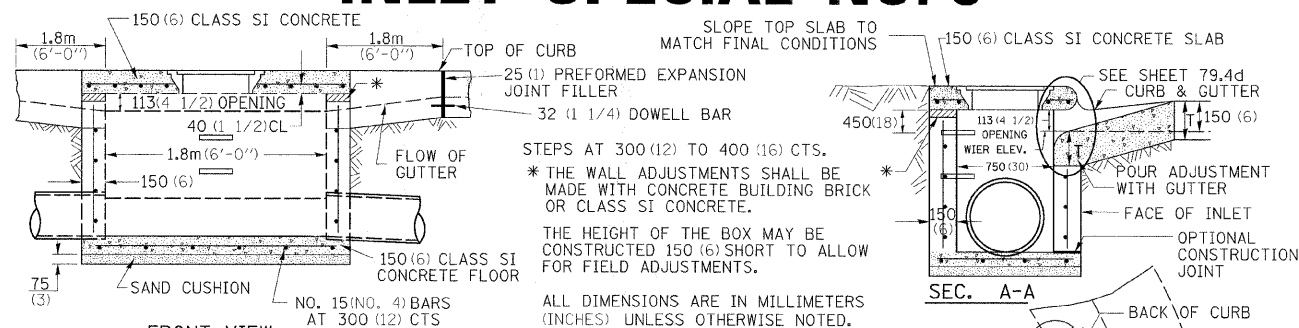
# TYPICAL BENCHING ON EXISTING EMBANKMENT



REVISED - 2-22-06

TYPICAL BENCHING ON EXISTING EMBANKMENT 50.4

# INLET SPECIAL NO. 5



STEPS AT 300(12) TO 400(16) CTS.  
\* THE WALL ADJUSTMENTS SHALL BE MADE WITH CONCRETE BUILDING BRICK OR CLASS SI CONCRETE.  
THE HEIGHT OF THE BOX MAY BE CONSTRUCTED 150(6) SHORT TO ALLOW FOR FIELD ADJUSTMENTS.

ALL DIMENSIONS ARE IN MILLIMETERS (INCHES) UNLESS OTHERWISE NOTED.

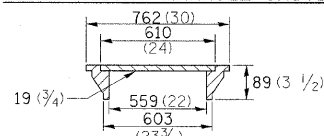
### NOTES

SEE STANDARD 602701 FOR DETAILS OF STEPS. 25 (1) PREFORMED EXPANSION JOINTS AS SHOWN SHALL BE PROVIDED ON EACH SIDE OF INLET. CLASS SI CONCRETE OR PRECAST CONCRETE SHALL BE USED THROUGHOUT.

THE SIDE WALLS MAY BE BUILT AS PRECAST SEGMENTAL SECTIONS.

REINFORCEMENT FOR INLET SPECIAL NO. 5 SHALL BE ACCORDING TO DISTRICT STANDARD 79.4e

### LIGHT WEIGHT MANHOLE CASTING

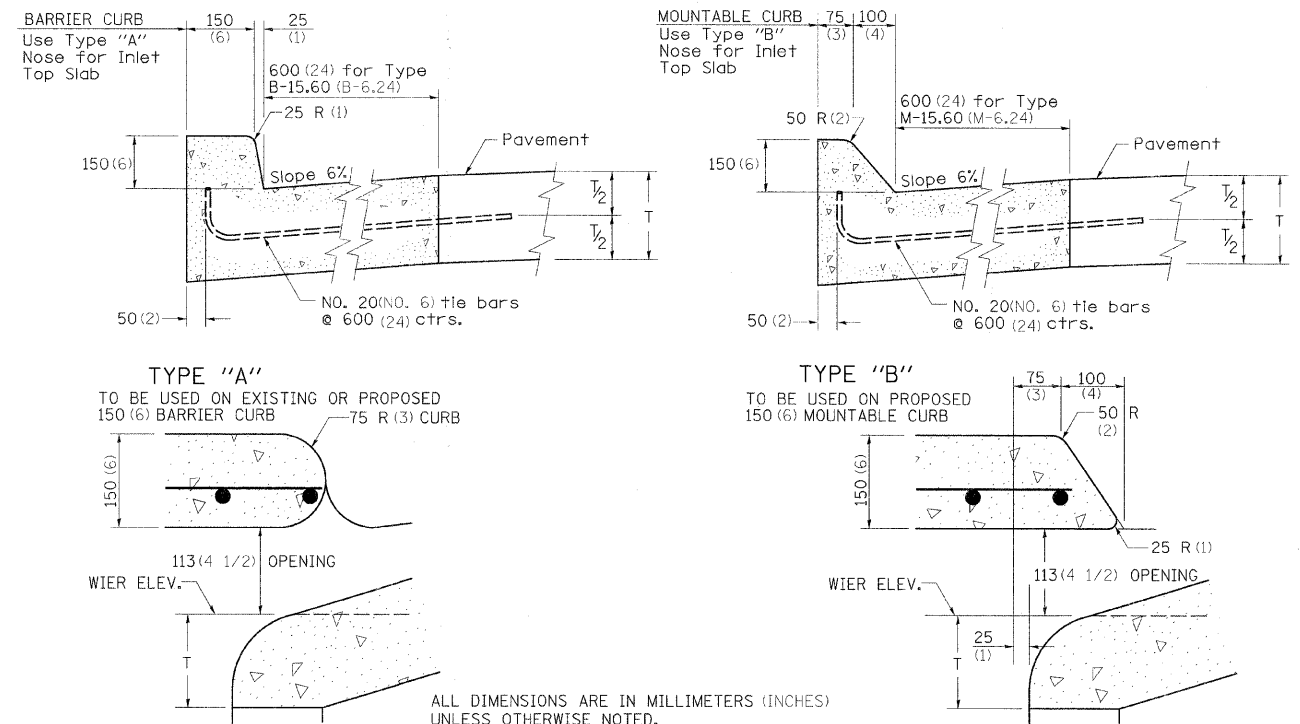


TOTAL WEIGHT 73 KG. (160 LBS.)

REVISED - 4-4-05

INLET SPECIAL NO. 5 79.4b

# NOSE TYPE FOR INLET TOP SLAB



ALL DIMENSIONS ARE IN MILLIMETERS (INCHES) UNLESS OTHERWISE NOTED.

REVISED - 2-14-95

NOSE TYPE FOR INLET TOP SLAB 79.4d

|  |                    |            |           |   |                                       |                    |                                  |   |                 |              |  |  |
|--|--------------------|------------|-----------|---|---------------------------------------|--------------------|----------------------------------|---|-----------------|--------------|--|--|
| FILE NAME = H:\Projeota\2944\DGNS\286287ST02.dgn | USER NAME = #USER* | DESIGNED - | REVISED - | <b>STATE OF ILLINOIS<br/>DEPARTMENT OF TRANSPORTATION</b> | <b>REGION 2 / DISTRICT 2 STANDARD</b> | F.A. RTE. 55       | SECTION (W-1-15)IBR-1            | COUNTY WINNEBAGO                              | TOTAL SHEETS 59 | SHEET NO. 42 |  |  |
| PLOT SCALE = 1:2000 1/2 IN.                      | CHECKED -          | REVISED -  | REVISED - |   |                                       | SCALE:             | SHEET NO. OF SHEETS STA. TO STA. | FED. ROAD DIST. NO. ILLINOIS FED. AID PROJECT |                 |              |  |  |
| PLOT DATE = 11/30/2009                           | DATE -             | REVISED -  | REVISED - |   |                                       | CONTRACT NO. 64D22 |                                  |   |                 |              |  |  |
|  |                    |            |           |   |                                       |                    |                                  |   |                 |              |  |  |