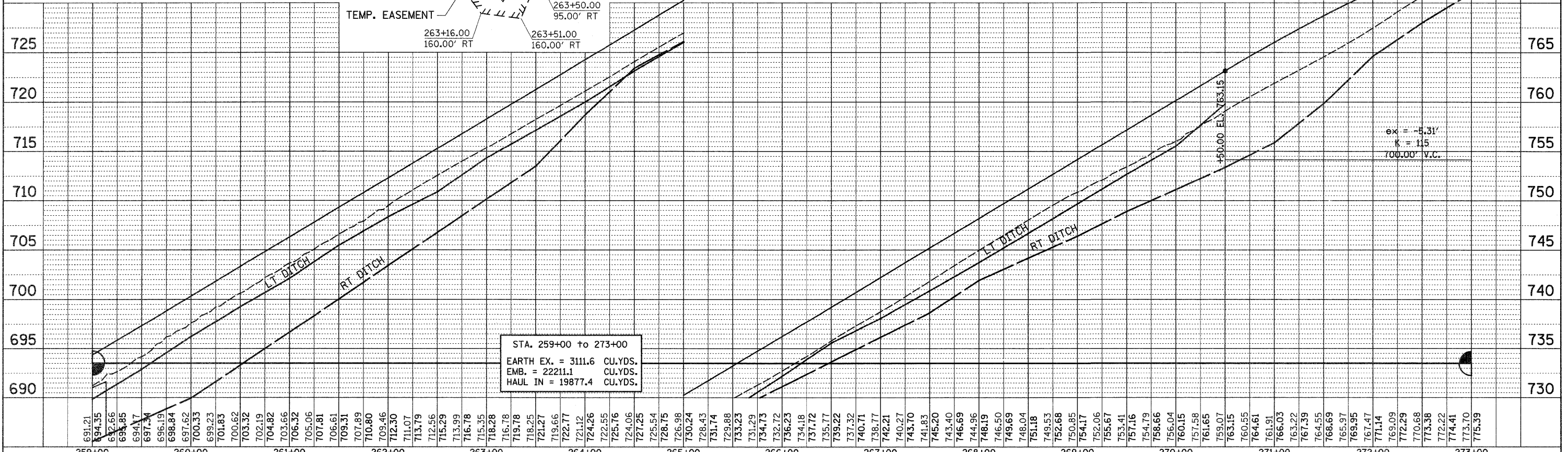
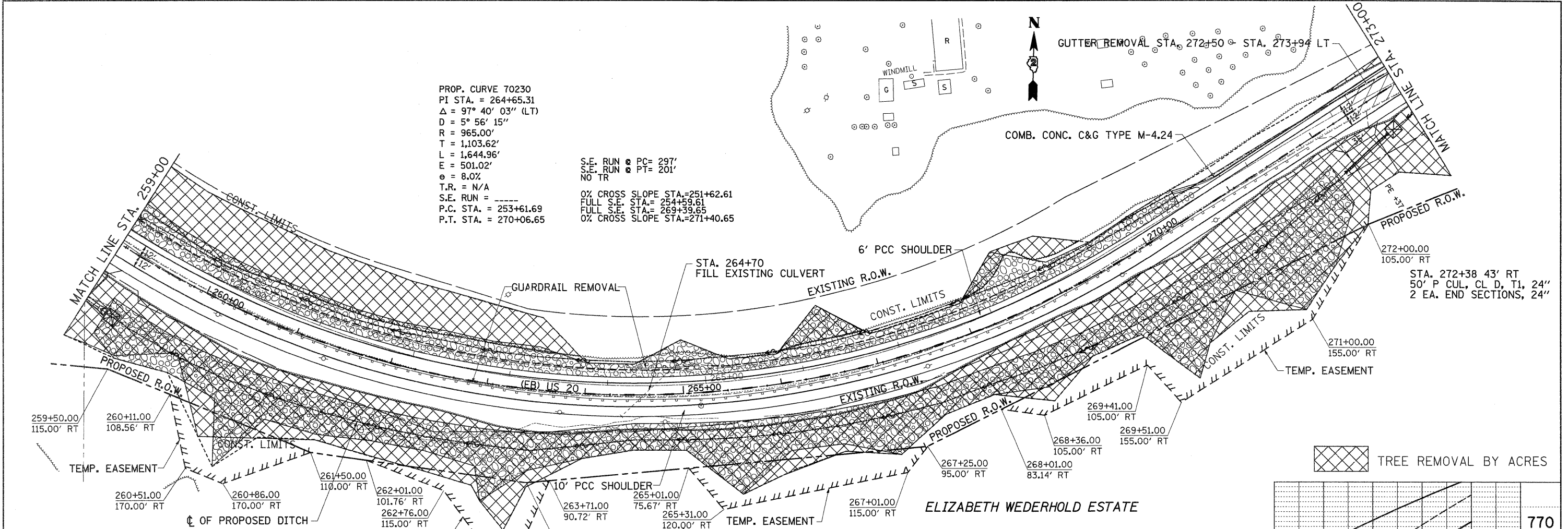


DATE: _____ BY: _____
 SURVEYED _____
 ALIGNED _____
 NOTE BOOK _____
 NO. _____

DATE: _____ BY: _____
 SURVEYED _____
 GRADES CHECKED _____
 NOTE BOOK _____
 NO. _____

PROP. CURVE 70230
 PI STA. = 264+65.31
 $\Delta = 97^\circ 40' 03''$ (LT)
 $D = 5^\circ 56' 15''$
 $R = 965.00'$
 $T = 1,103.62'$
 $L = 1,644.96'$
 $E = 501.02'$
 $e = 8.0\%$
 $T.R. = N/A$
 S.E. RUN = _____
 P.C. STA. = 253+61.69
 P.T. STA. = 270+06.65

S.E. RUN @ PC= 297'
 S.E. RUN @ PT= 201'
 NO TR
 0% CROSS SLOPE STA.=251+62.61
 FULL S.E. STA.= 254+59.61
 FULL S.E. STA.= 269+39.65
 0% CROSS SLOPE STA.=271+40.65



FILE NAME =	USER NAME = cushmanbw	DESIGNED -	REVISED -	STATE OF ILLINOIS DEPARTMENT OF TRANSPORTATION	US 20 EASTBOUND	F.A.P. RTE. 301	SECTION 31T	COUNTY JO DAVIESS	TOTAL SHEETS 160	SHEET NO. 34
CONTRACT NO. 64D92	SCALE:	SHEET NO. OF SHEETS	STA. TO STA.			ILLINOIS FED. AID PROJECT				
PLOT SCALE = 50.0000' / IN.	CHECKED -	REVISED -	REVISED -							
PLOT DATE = Wed Dec 09 13:01:49 2009	DATE -	REVISED -	REVISED -							