

F.A.P. RTE.	SECTION	COUNTY	TOTAL SHEETS	SHEET NO.
301	31T	JODAVIESS	160	45
STA.		TO STA.		
FED. ROAD DIST. NO.		ILLINOIS FED. AID PROJECT		

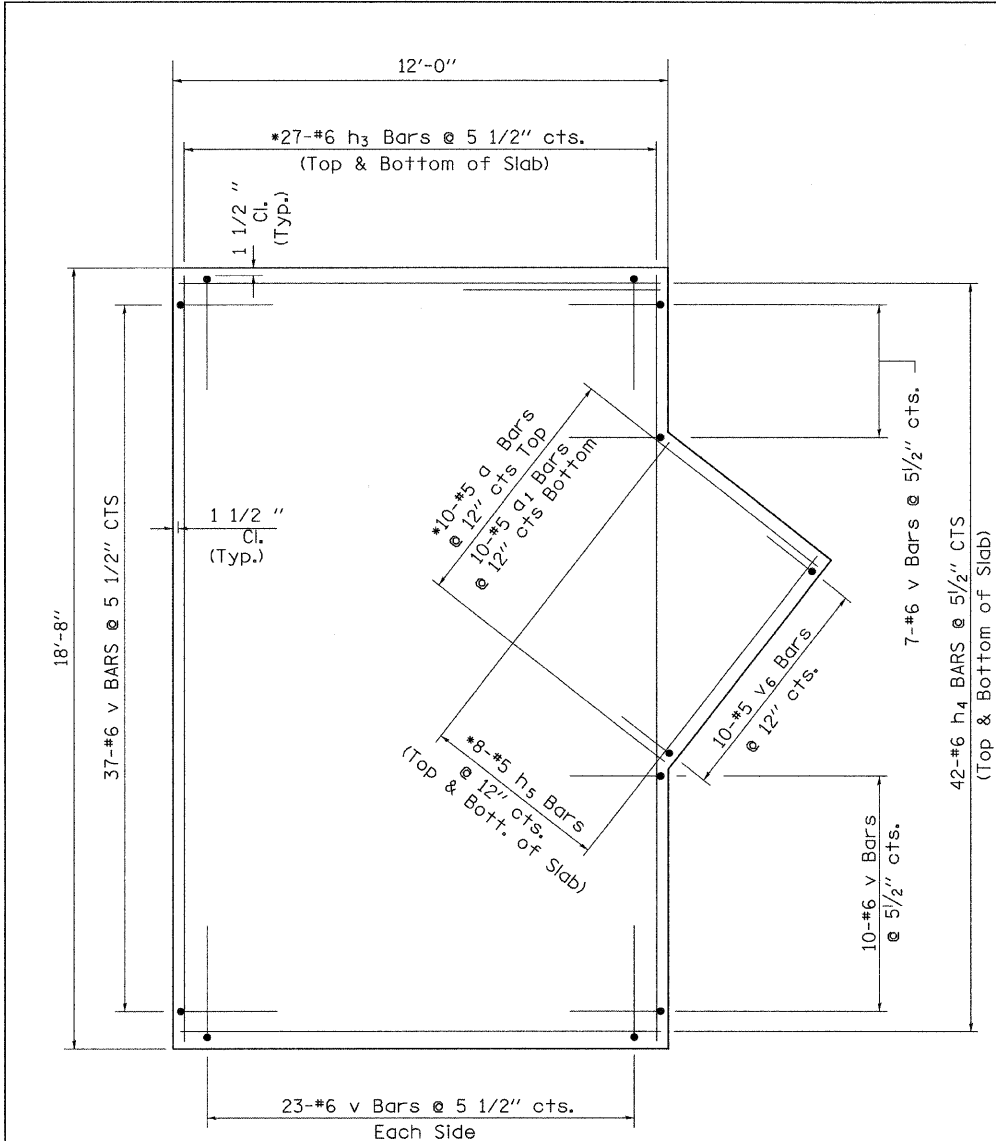
DROP BOX NO. 1

RT STA 250+27 (US 20)

BILL OF MATERIAL

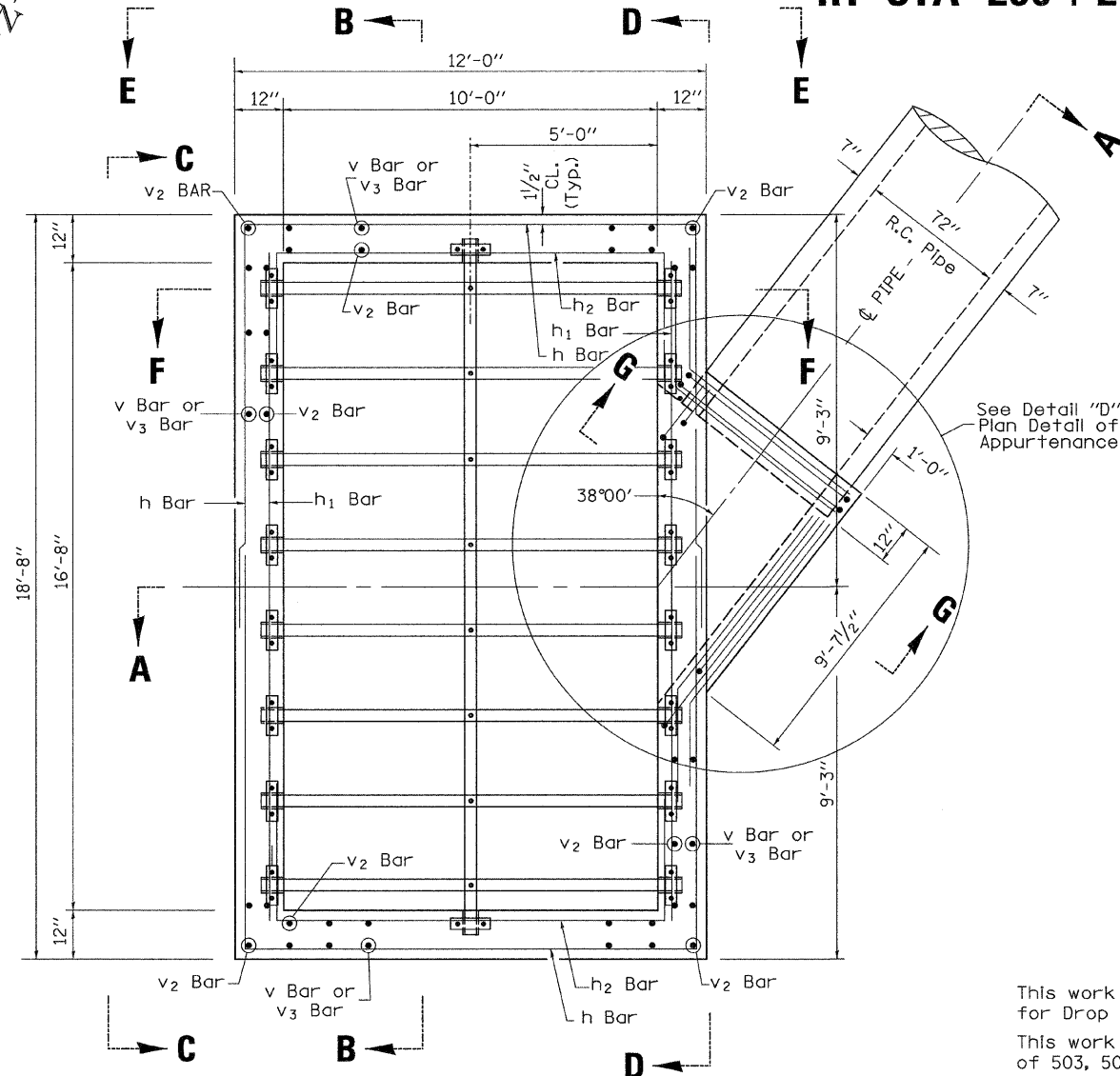
(For Information Only)

BAR	SIZE	NO.	LENGTH	SHAPE
a	5	20	11'-10"	
a1	5	20	11'-3"	
h	6	50	32'-9"	
h1	6	50	16'-11"	
h2	6	50	15'-5"	
h3	6	54	18'-3"	
h4	6	84	11'-7"	
h5	5	16	10'-3"	
h6	6	4	14'-3"	
h7	6	30	4'-6"	
h8	6	30	11'-9"	
h9	5	24	3'-0"	
v	6	100	9'-5"	
v2	5	58	13'-5"	
v3	5	52	9'-10"	
v4	5	14	16'-10"	
v5	5	13	13'-1"	
v6	5	10	9'-0"	
v7	5	10	6'-9"	
DESCRIPTION	UNIT	QTY.		
Concrete Box Culverts	CU YD	39.7		
Reinforcement Bars	LB	12,760		
DESCRIPTION	UNIT	QTY.		
4" Galvanized Steel Pipe	1e	17'-5"		
	8e	10'-9"		
1/4" Galvanized Steel Plate	EACH	18		
1/4"x 4"x 14" Galvanized Steel Plate	EACH	18		
5/8"x 10" Galvanized Steel Bolts	EACH	8		
Expansion Bolts 1/2"	EACH	36		



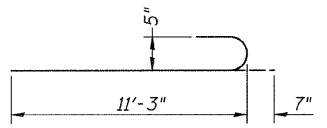
BOTTOM SLAB

*Bend to fit Top of Slab Bars around RC Pipe

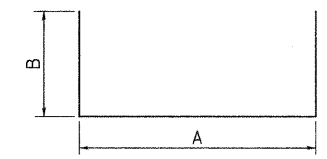


PLAN

Cut pipe to fit in field.

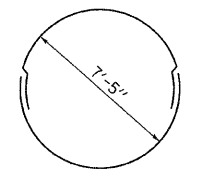


BAR a

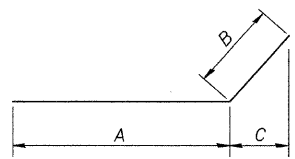


BARS h & h₂

BAR	A	B
h Bar	11'-9"	10'-6"
h ₂ Bar	10'-3"	2'-7"

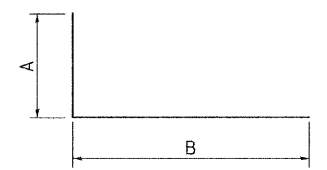


BAR h₆ (PAIR)



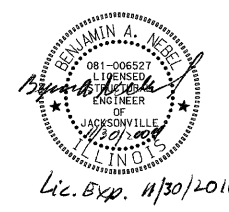
BARS h₇ & h₈

BAR	A	B	C
h ₇ Bar	2'-3"	2'-3"	1'-9"
h ₈ Bar	9'-6"	2'-3"	1'-4 1/2"



BARS v, v₄, v₅, & v₆

BAR	A	B
v Bar	2'-7"	6'-10"
v ₄ Bar	7'-4"	9'-6"
v ₅ Bar	2'-4"	10'-9"
v ₆ Bar	2'-2"	6'-10"



GENERAL NOTES:

This work shall be paid for at the contract unit price per Each for Drop Box No. 1.

This work shall be done according to the applicable portion of 503, 508, and 540 of the Standard Specifications.

Contractor shall field verify Galvanized pipe length.

Exposed edges shall be beveled 3/4".

The contract unit price "each" for DROP BOX NO. 1 shall include the Expansion Bolts, Galvanized Pipe, Concrete Structures, Reinforcement Bars, Bolts, Nuts, Washers, Steel Plates, earth excavation where required, and necessary grading to fit the inlet as shown in the cross sections or to the slope.

Reinforcement bars shall conform to the requirements of ASTM A 706 Gr. 60. See Special Provisions.

Steel Plates shall conform to AASHTO M-183 and shall be Galvanized conforming to AASHTO M-111.

Galvanized Pipe shall not be Threaded.

Bolts, Nuts, and Washers shall be in accordance with Article 505 of the Standard Specification and shall be galvanized.

See Plan & Profile Sheet for more information.

See Cross Section Sheet for more information.

Steel pipes shall conform to A.S.T.M. A-53 Grade B, Schedule 40, and shall be galvanized conforming to AASHTO Mill and A.S.T.M. A385.

Grating Design conforms to AASHTO Roadside Design Guide Art. 3.4.2.1.

PLOT DATE = 11/30/2009
 FILE NAME = V:\Bridges\2244\2244-22.dwg
 PLOT SCALE = 5/16" = 1' IN.
 USER NAME = toody