

# LAND SECTION MARKERS

## NOTES

THE REFERENCE MARKERS SHALL BE CONSTRUCTED BY POURING CLASS SI CONCRETE INTO HOLES PREPARED BY A POST HOLE DIGGER OR OTHER APPROVED METHODS. FORMS WILL NOT BE REQUIRED. PRECAST MARKERS OF THE SAME SIZE AND CONSTRUCTION MAY BE USED.

IN CULTIVATED FIELDS REFERENCE MARKERS SHALL BE PLACED TWO FEET BELOW THE GROUND SURFACE. IN FENCE LINES OR PROTECTED AREAS THE TOP SHALL BE PLACED AT GROUND LEVEL.

THE FOLLOWING WORK SHALL BE DONE UNDER THE DIRECTION OF A REGISTERED LAND SURVEYOR OF THE STATE OF ILLINOIS:

VERIFY AND TIE OFF ALL U.S. PUBLIC LAND SURVEY MONUMENTS, SHOWN IN THE PLANS, PRIOR TO CONSTRUCTION OPERATIONS. TIE POINTS SHALL BE SUFFICIENT IN NUMBER AND IN LOCATIONS AS NOT TO BE DISTURBED DURING CONSTRUCTION OPERATIONS.

AFTER CONSTRUCTION OPERATIONS ARE COMPLETE, INSTALL A PERMANENT SURVEY MARKER OF THE TYPE SPECIFIED TO REPLACE THE U.S. PUBLIC LAND SURVEY MONUMENT THAT WAS DISPLACED OR COVERED DURING CONSTRUCTION. THE LETTERING REFERRING TO THE STATE OF ILLINOIS AND DIVISION OF HIGHWAYS SHALL BE OMITTED FROM THE PERMANENT SURVEY MARKER AND THE MARKER SHALL BE MARKED AS DIRECTED BY THE ENGINEER.

SET FOUR CONCRETE REFERENCE MARKERS FOR EACH U.S. PUBLIC LAND SURVEY MONUMENT.

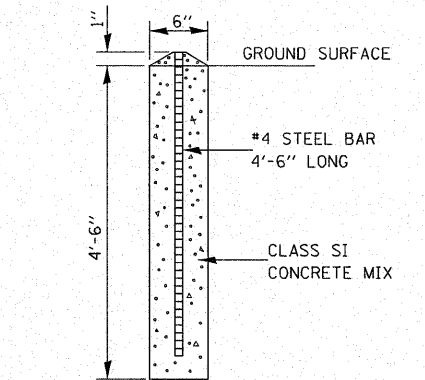
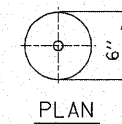
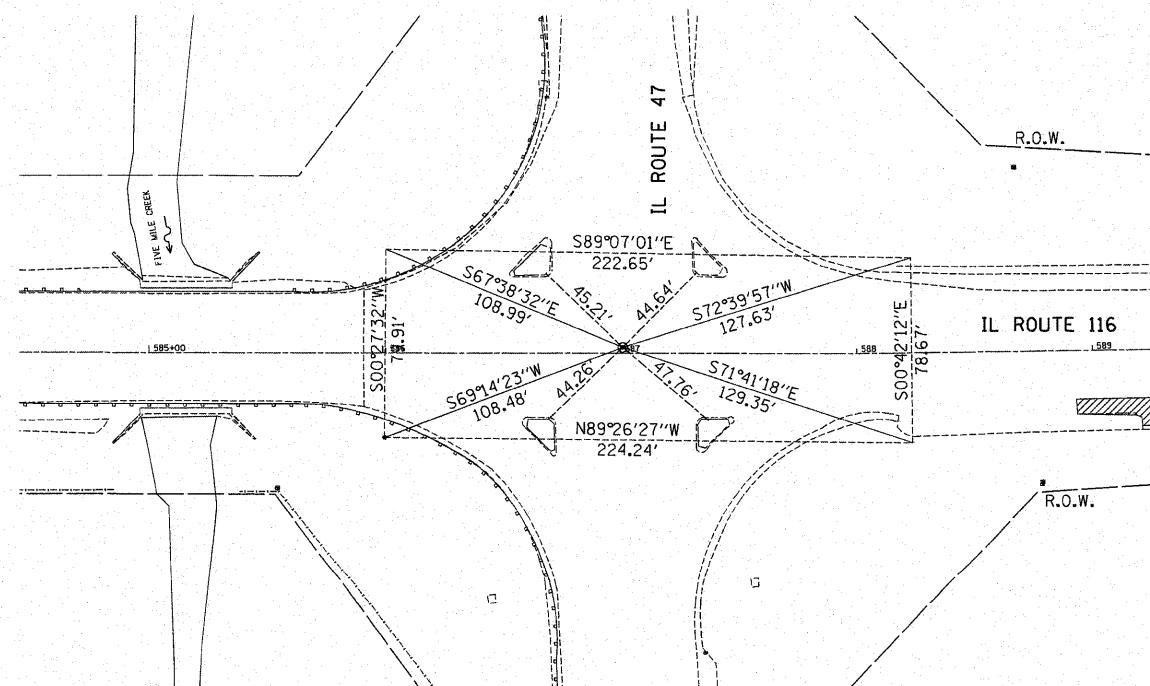
PREPARE MONUMENT RECORDS, FILE THE RECORDS AT THE COUNTY RECORDER'S OFFICE, AND PROVIDE A COPY TO THE DISTRICT OFFICE.

### PERMANENT SURVEY MARKERS, OF THE TYPE SPECIFIED

SHALL BE PAID FOR AT THE CONTRACT UNIT PRICE, EACH, WHICH WILL BE PAYMENT IN FULL FOR FURNISHING, INSTALLING AND MARKING SAID MARKERS.

### LAND SECTION MARKERS

SHALL BE PAID FOR AT THE CONTRACT UNIT PRICE, EACH, WHICH WILL BE PAYMENT IN FULL FOR SETTING TIE POINTS, SETTING FOUR CONCRETE REFERENCE MARKERS, PREPARING MONUMENT RECORDS, RECORDING AT COUNTY RECORDER'S OFFICE AND PROVIDING A COPY TO THE DISTRICT OFFICE.



SECTION  
CONCRETE REFERENCE MARKER

667-1

FILE NAME =	USER NAME = IDOTCAD	DESIGNED - SPF	REVISED -	<b>STATE OF ILLINOIS DEPARTMENT OF TRANSPORTATION</b>	<b>DETAILS</b>		F.A. RTE.	SECTION	COUNTY	TOTAL SHEETS	SHEET NO.	
W:\2183.03-IDOT IL 116 Plans\DGN\Sheet Files\202300DET.dgn	DRAWN - FJS	REVISOR -	REVISOR -		SCALE:	SHEET NO. 06 OF 09 SHEETS	STA.	TO STA.	681	114 RS-2	LIVINGSTON	63 44
PLOT SCALE = 1:3000 / IN.	CHECKED - JMS	REVISOR -	REVISOR -						CONTRACT NO. 66532			
PLOT DATE = 9/18/2009	DATE - 09/25/09	REVISOR -	REVISOR -						ILLINOIS FED. AID PROJECT			