

F.A.P. RTE.	SECTION	COUNTY	TOTAL SHEETS	SHEET NO.
623	(H)I-1	LASALLE	25	1
FED. ROAD DIST. NO.	ILLINOIS	CONTRACT NO. 66914		

INDEX OF SHEETS

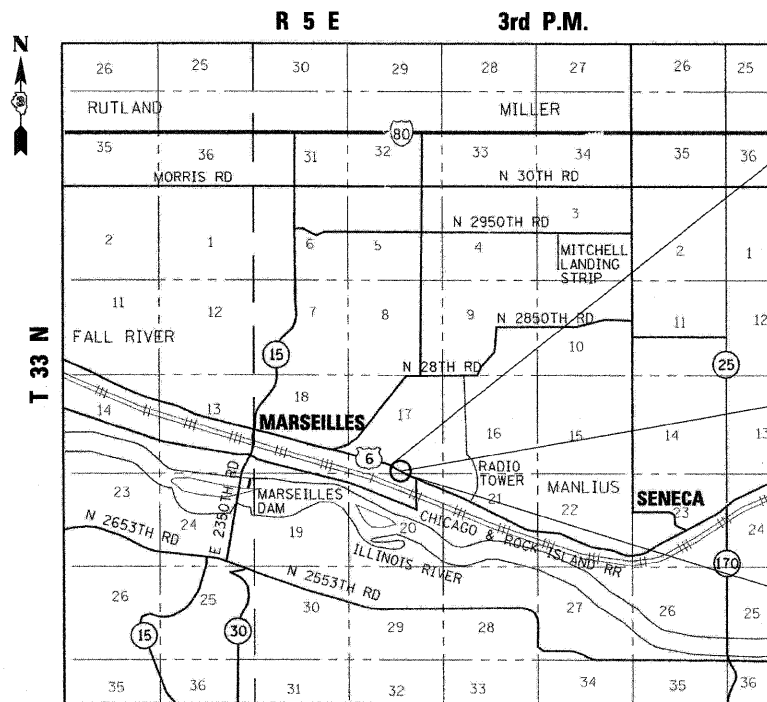
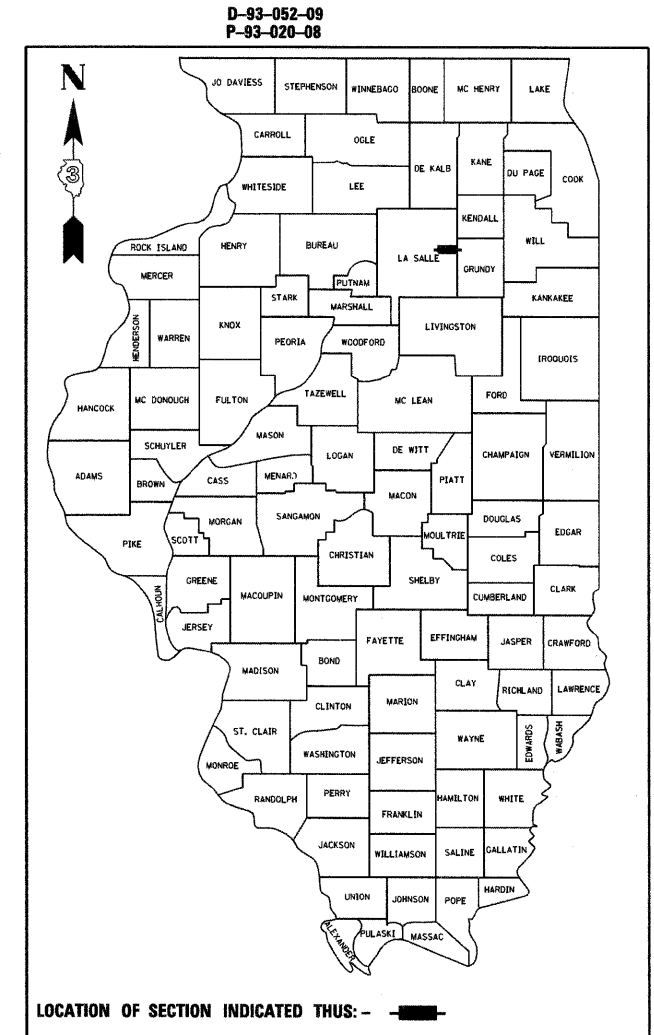
- 1 COVER SHEET
 - 2 GENERAL NOTES AND LIST OF STANDARDS
 - 3 SUMMARY OF QUANTITIES
 - 4-5 TYPICAL SECTIONS
 - 6-7 SCHEDULE OF QUANTITIES
 - 8 ALIGNMENT, TIES AND BENCHMARKS
 - 9 PLAN AND PROFILE
 - 10 DETOUR PLAN
 - 11 EROSION CONTROL PLAN
 - 12 DRAINAGE PLAN AND PROFILE
 - 13 RIGHT OF WAY PLAN
 - 14-17 STRUCTURAL PLANS
 - 18 EXISTING PLAN - STRUCTURE
 - 19-20 DETAILS
 - 21-25 CROSS SECTIONS
- FOR LIST OF HIGHWAY STANDARDS SEE SHEET NO. 2

STATE OF ILLINOIS
DEPARTMENT OF TRANSPORTATION
DIVISION OF HIGHWAYS
PROPOSED
HIGHWAY PLANS

FAP ROUTE 623 (US 6)
SECTION (H)I-1
PROJECT ACF-0623(027)
LASALLE COUNTY

C - 93 - 106 - 09

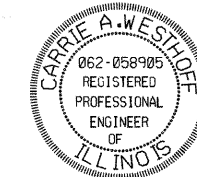
REMOVE AND REPLACE EXISTING CULVERT (SN 050-2595) WITH
NEW CULVERT (SN 050-2643) OVER UNNAMED TRIBUTARY TO
ILLINOIS RIVER 3.6 MILES WEST OF IL 170



BEGIN IMPROVEMENT
STA. 146+00.00

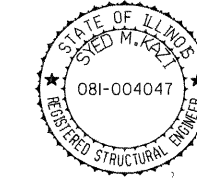
EXISTING
S.N. 050-2595
PROPOSED
S.N. 050-2643
STA. 149+29.00
12' X 7' CAST-IN-PLACE
CONCRETE BOX CULVERT

END IMPROVEMENT
STA. 152+00.00



Carrie Westhoff

Carrie A. Westhoff
Licensed Professional Engineer
State of Illinois
Lic. No. 062-058905
Expires: 11-30-2011
Signature and Seal apply
to Civil Drawings



Syed M. Kazi
Licensed Structural Engineer
State of Illinois
Lic. No. 081-004047
Expires: 11-30-2010
Signature and Seal apply
to Structural Drawings

FUNCTION CLASSIFICATION

MINOR RURAL ARTERIAL
2008 ADT = 2900
P.V. = 85.9% S.U. = 8.8% M.U. = 5.3%

STATE OF ILLINOIS
DEPARTMENT OF TRANSPORTATION
DIVISION OF HIGHWAYS

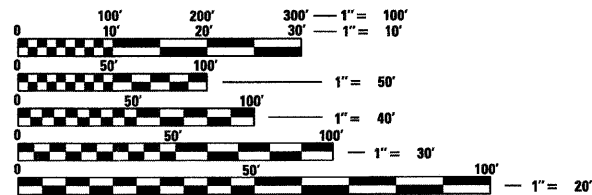
SUBMITTED _____ 20 _____

George Ryan
DEPUTY DIRECTOR OF HIGHWAYS, REGION ENGINEER

Scott E. Stolt, P.E., P.D.
Acting ENGINEER OF DESIGN AND ENVIRONMENT

Christine M. Reed
DIRECTOR OF HIGHWAYS, CHIEF ENGINEER

PRINTED BY THE AUTHORITY
OF THE STATE OF ILLINOIS



FULL SIZE PLANS HAVE BEEN PREPARED USING STANDARD ENGINEERING SCALES. REDUCED SIZED PLANS WILL NOT CONFORM TO STANDARD SCALES. IN MAKING MEASUREMENTS ON REDUCED PLANS, THE ABOVE SCALES MAY BE USED.

J.U.L.I.E.
JOINT UTILITY LOCATION INFORMATION FOR EXCAVATION
1-800-892-0123
OR 811

DISTRICT 3 NO. (815) 434-6131
PROJECT ENGINEER: JOSEPH KANNEL, P.E.
UNIT CHIEF: MICHELE LINDEMANN, P.E.
TOWNSHIP: MANLIUS
CONTRACT NO. 66914

LOCATION MAP

1 INCH = 1 MILE
GROSS LENGTH = 600 FT. = 0.114 MI.
NET LENGTH = 600 FT. = 0.114 MI.

DELTA ENGINEERING, INC.
CONSULTING ENGINEERS, CONSTRUCTION MANAGERS, SURVEYORS
111 West Jackson Blvd., Suite 910 Chicago, IL 60604-2001