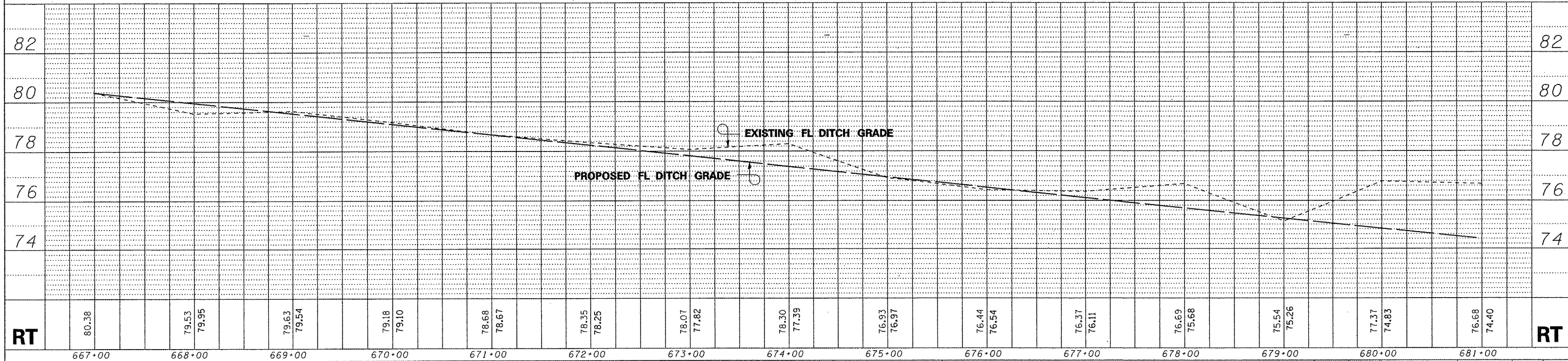
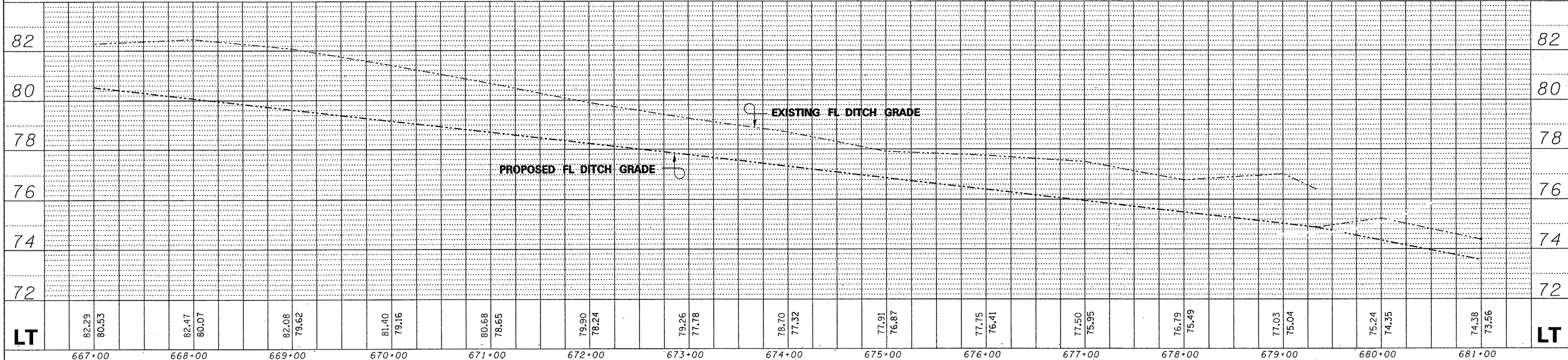
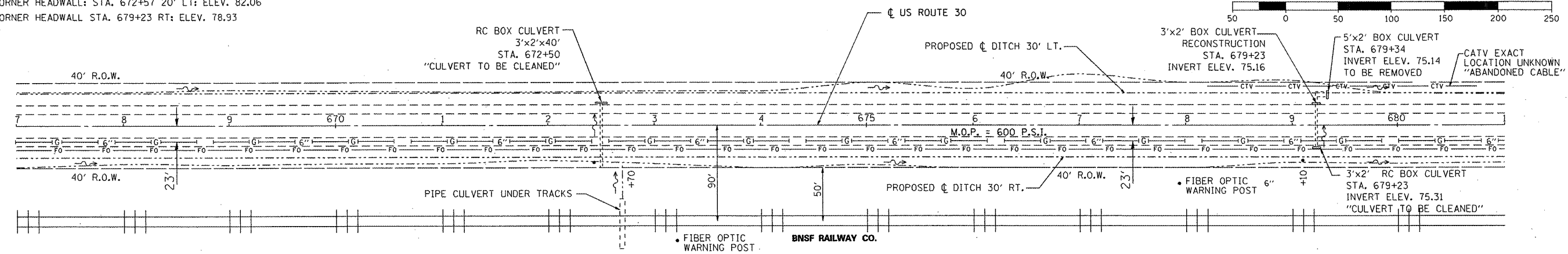
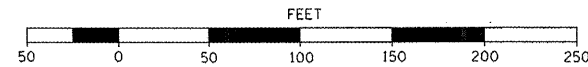


BM #6: WOOD HUB: STA. 667+50 40 LT: ELEV. 84.55
 BM #7: N.E. CORNER HEADWALL: STA. 672+57 20' LT: ELEV. 82.06
 BM #8: S.E. CORNER HEADWALL STA. 679+23 RT: ELEV. 78.93

GRAPHIC SCALE



FILE NAME =	USER NAME = woodshankr1	DESIGNED - RON WOODSHANK	REVISED -
c:\pwwork\k\p\dot\WOODSHANKR1\d0135041\066939-dets\ls.dgn		CHECKED - RON WOODSHANK	REVISED -
PLOT SCALE = 48.0349 / IN.		DRAWN -	REVISED -
PLOT DATE = Feb 08, 2010 - 01:51:10 PM		CHECKED -	REVISED -

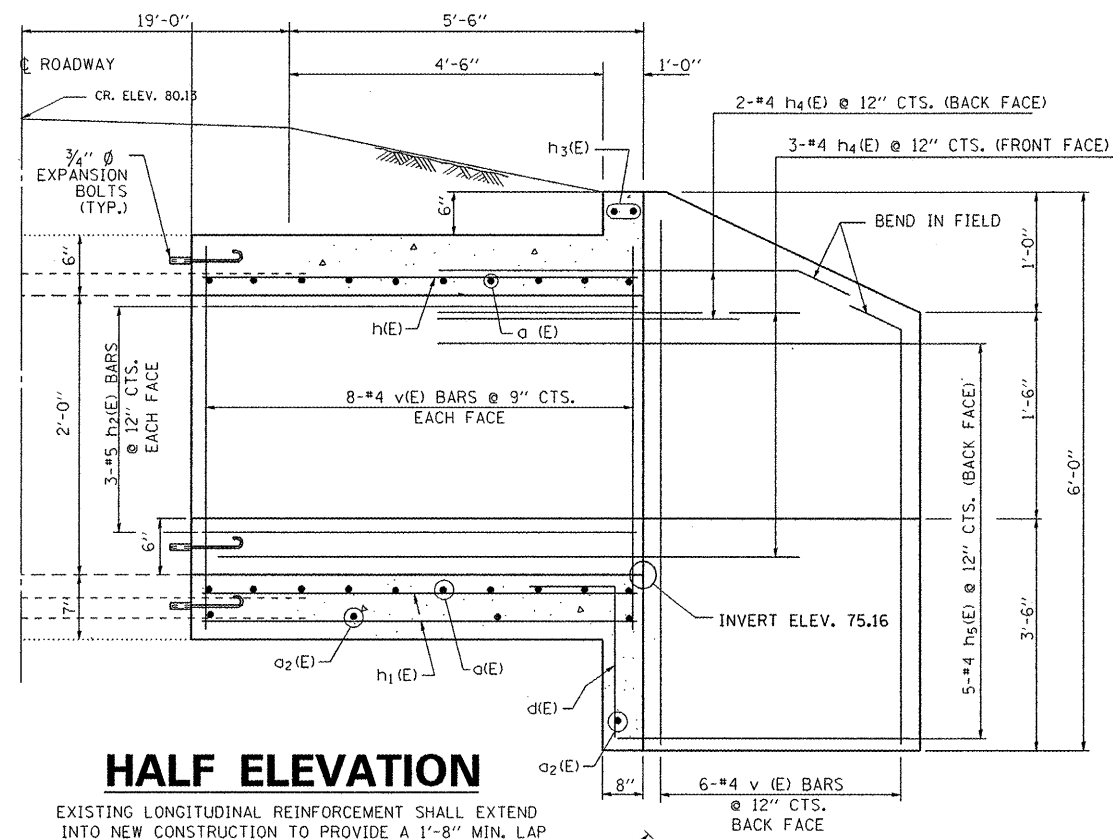
STATE OF ILLINOIS
 DEPARTMENT OF TRANSPORTATION

PLAN AND PROFILE - US 30

SCALE: 50 SHEET NO. 3 OF 4 SHEETS STA. 667+00 TO STA. 681+00

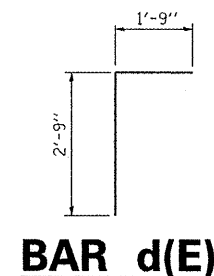
F.A.P. RTE. 573/557	SECTION (116,128)T	COUNTY DEKALB	TOTAL SHEETS 21	SHEET NO. 11
ILLINOIS			CONTRACT NO. 66939	

Rev. 2-11-10

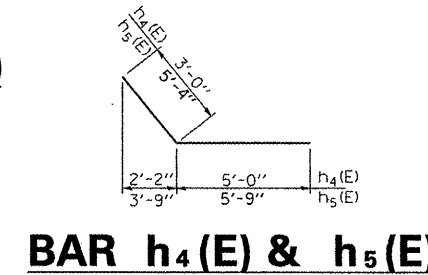


HALF ELEVATION

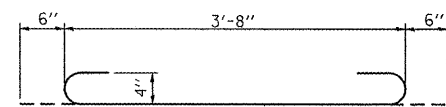
EXISTING LONGITUDINAL REINFORCEMENT SHALL EXTEND INTO NEW CONSTRUCTION TO PROVIDE A 1'-8" MIN. LAP



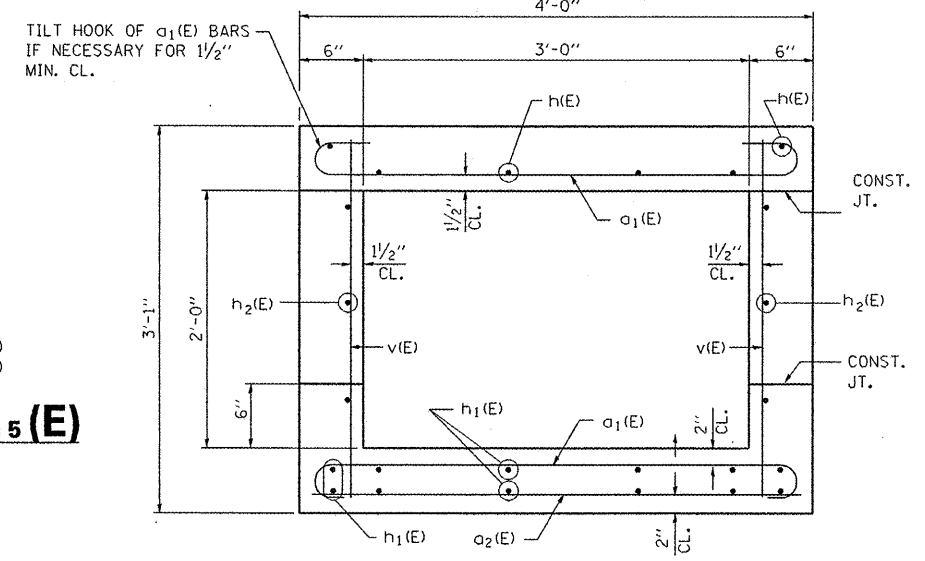
BAR d(E)



BAR h4(E) & h5(E)



BAR a1(E)



SECTION THRU BARREL REINFORCEMENT

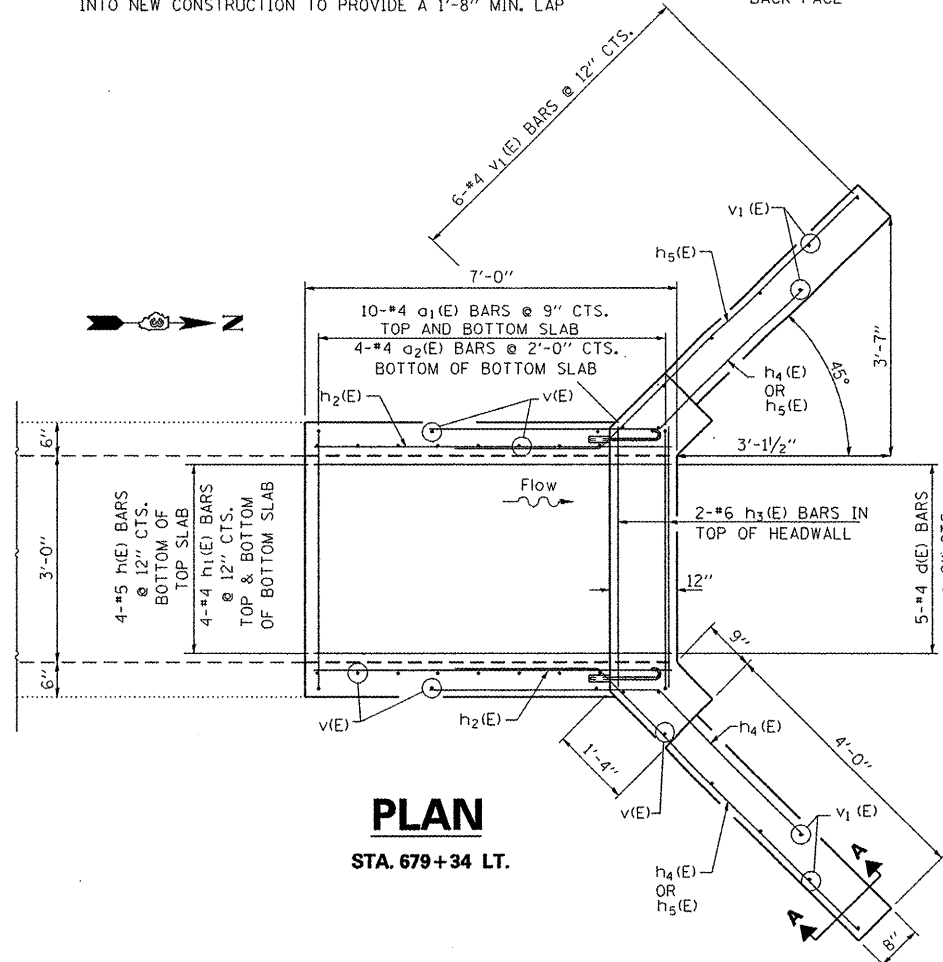
NOTES

A DISTANCE OF HALF THE LENGTH OF THE WINGWALL BUT NOT LESS THAN SIX FEET (6') OF THE BARREL SHALL BE POURED MONOLITHICALLY WITH THE WINGWALLS.

REINFORCEMENT BARS SHALL CONFORM TO THE REQUIREMENTS OF ASTM A 706, GR 60. SEE SPECIAL PROVISIONS.

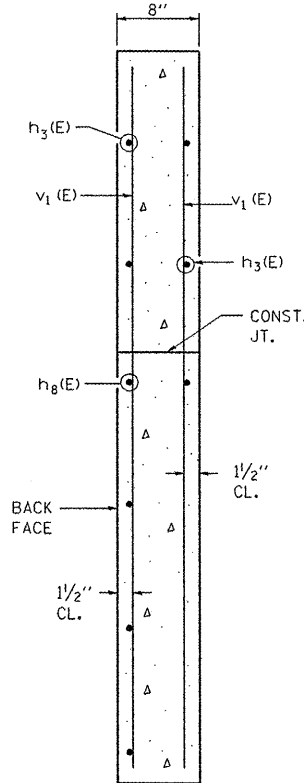
REINFORCEMENT BARS DESIGNATED (E) SHALL BE EPOXY COATED.

ALL CONSTRUCTION JOINTS SHALL BE BONDED.

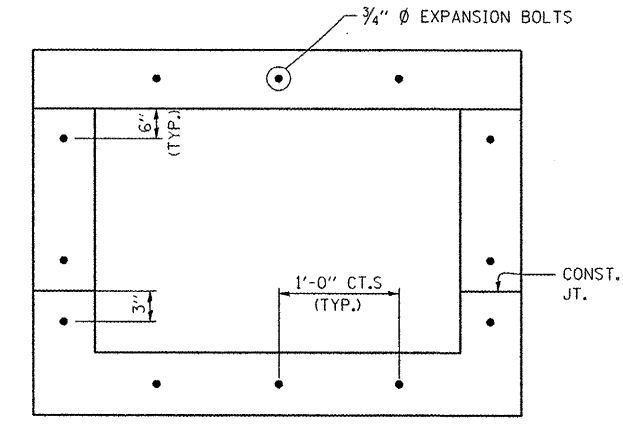


PLAN

STA. 679+34 LT.



SECTION A-A



SECTION THRU BARREL EXPANSION BOLTS

NOTE: EXPANSION BOLTS SHALL BE 3/4" Ø HOOKED BOLTS. HOOKED BOLTS SHALL EXTEND A MINIMUM OF 9" INTO NEW CONCRETE

BILL OF MATERIAL

Bar	No.	Size	Length	Shape
a1(E)	20	#4	4'-8"	
a2(E)	4	#4	3'-8"	
d(E)	5	#4	4'-6"	
h(E)	6	#5	6'-9"	
h1(E)	12	#4	6'-9"	
h2(E)	6	#5	5'-9"	
h3(E)	2	#6	3'-9"	
h4(E)	5	#4	8'-0"	
h5(E)	5	#4	11'-1"	
v(E)	16	#4	2'-10"	
v1(E)	16	#4	5'-9"	
REINFORCEMENT BARS EPOXY COATED			POUNDS	300

(E) DENOTES "EPOXY COATED"

FILE NAME =	USER NAME = woodshank-r	DESIGNED - RON WOODSHANK	REVISED -
c:\pwwork\pwwid\WOODSHANKR\0135041\3366939-details.dgn		DRAWN - RON WOODSHANK	REVISED -
PLOT SCALE = 48.0349 / IN.		CHECKED -	REVISED -
PLOT DATE = Feb 08, 2010 - 01:52:09 PM		DATE -	REVISED -

STATE OF ILLINOIS
DEPARTMENT OF TRANSPORTATION

BOX CULVERT RECONSTRUCTION

SCALE: SHEET NO. 2 OF 3 SHEETS / STA. 679+23 LT.

F.A.P. RTE.	SECTION	COUNTY	TOTAL SHEETS	SHEET NO.
573/557	(116.128)T	DEKALB	21	20
ILLINOIS			CONTRACT NO. 66939	

Rev. 2-11-10