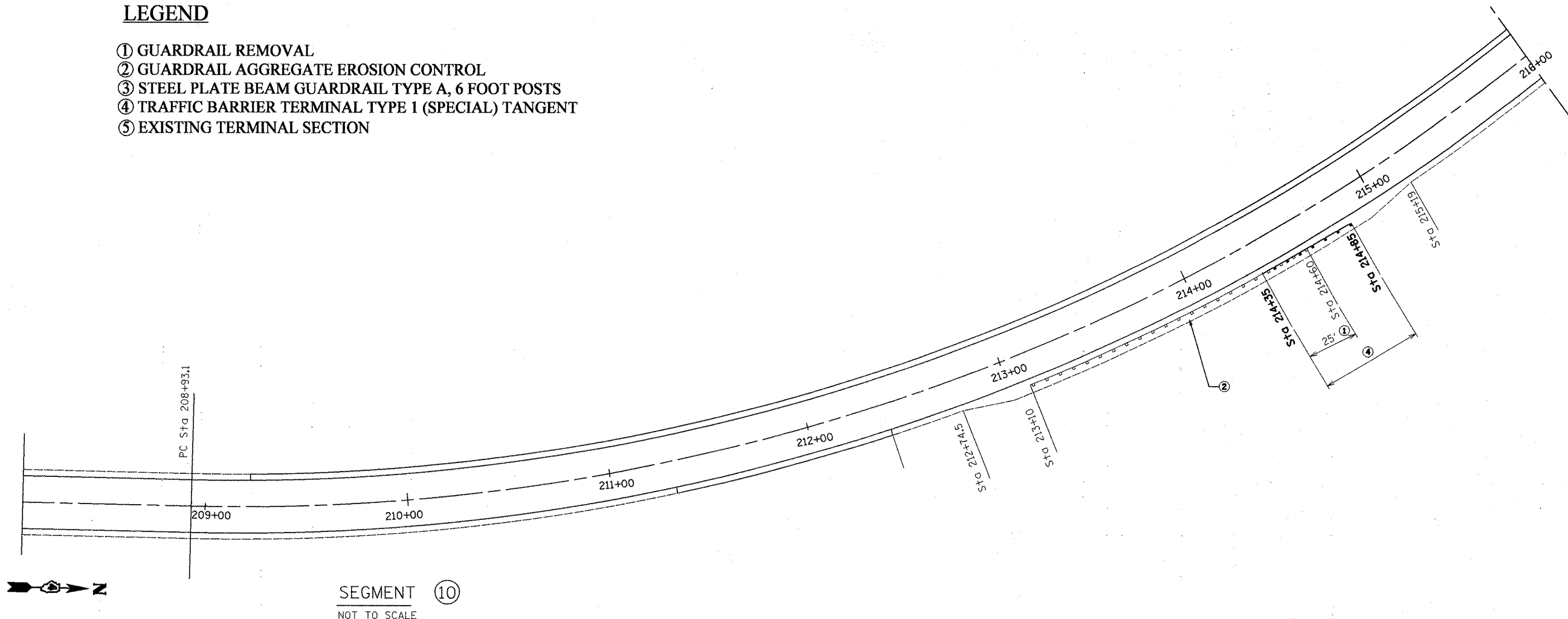


LEGEND

- ① GUARDRAIL REMOVAL
- ② GUARDRAIL AGGREGATE EROSION CONTROL
- ③ STEEL PLATE BEAM GUARDRAIL TYPE A, 6 FOOT POSTS
- ④ TRAFFIC BARRIER TERMINAL TYPE 1 (SPECIAL) TANGENT
- ⑤ EXISTING TERMINAL SECTION



SEGMENT 10

ITEM	UNIT	QUANTITY
GUARDRAIL REMOVAL	FOOT	25.00
GUARDRAIL AGGREGATE EROSION CONTROL	TON	45.00
STEEL PLATE BEAM GUARDRAIL TYPE A, 6 FEET POSTS	FOOT	0.00
TRAFFIC BARRIER TERMINAL TYPE 1 (SPECIAL) TANGENT	EACH	1.00
GUARDRAIL MARKER, TYPE A	EACH	1.00
TERMINAL MARKER DIRECT APPLIED	EACH	1.00

FILE NAME = D468747-sh1-plan.dgn	USER NAME = mendezp	DESIGNED -	REVISED -
		DRAWN -	REVISED -
		CHECKED -	REVISED -
		DATE -	REVISED -

**STATE OF ILLINOIS
DEPARTMENT OF TRANSPORTATION**

GUARDRAIL IMPROVEMENTS IL 17/91

SCALE: NONE SHEET NO. OF SHEETS STA. TO STA.

F.A.P. RTE. 643	SECTION (11,12)RS-2+(6)RS-3+(10)RS-4	COUNTY STARK	TOTAL SHEETS 45	SHEET NO. 25
CONTRACT NO. 68747				
ILLINOIS FED. AID PROJECT				