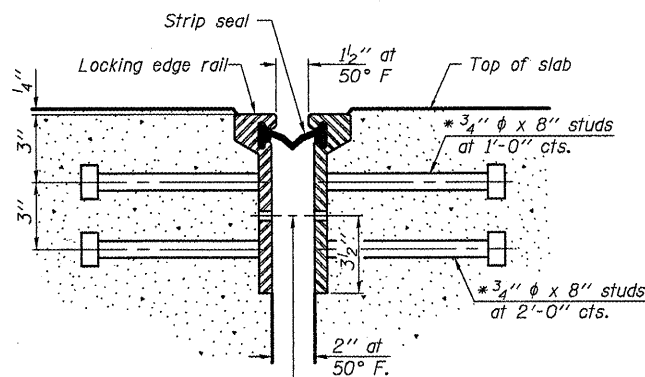
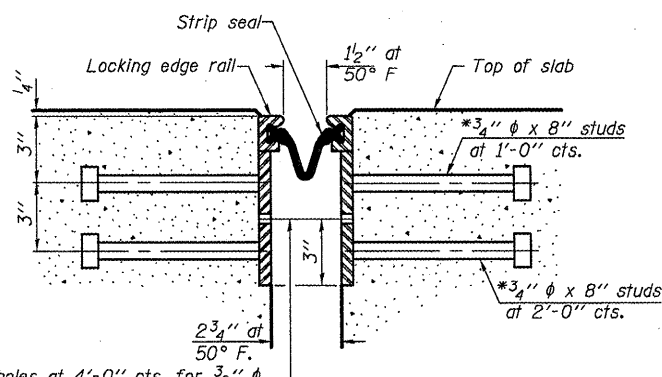


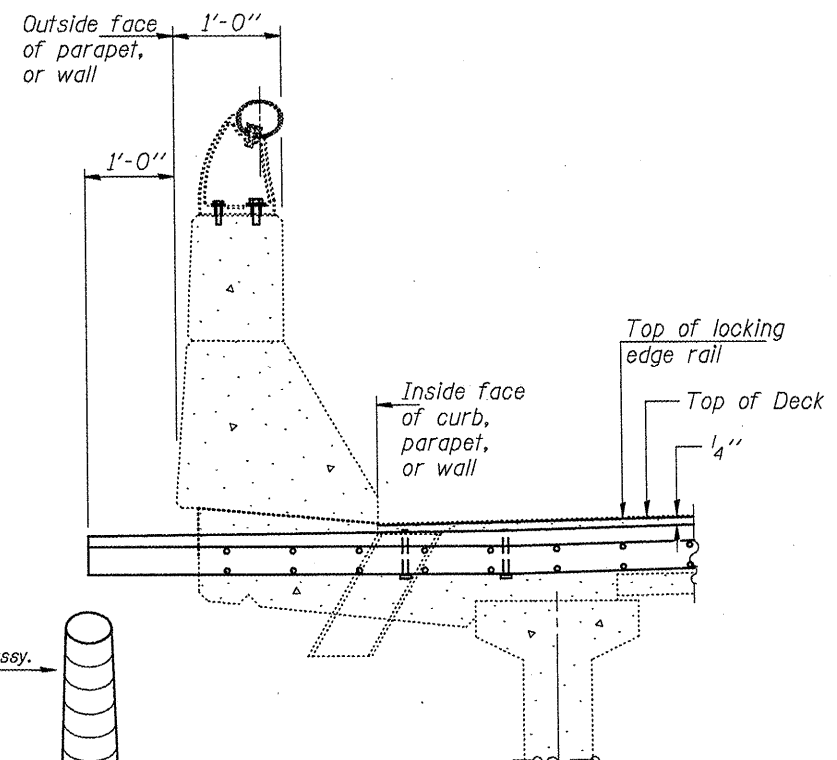
* Granular or solid flux filled headed studs conforming to Article 1006.32 of the Std. Specs., automatically end welded.



SECTION THRU ROLLED RAIL JOINT



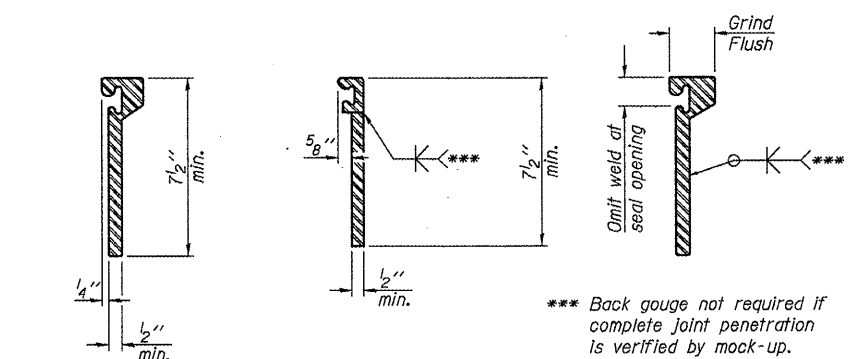
SECTION THRU WELDED RAIL JOINT



END TREATMENT AT CURB, PARAPET, OR WALL

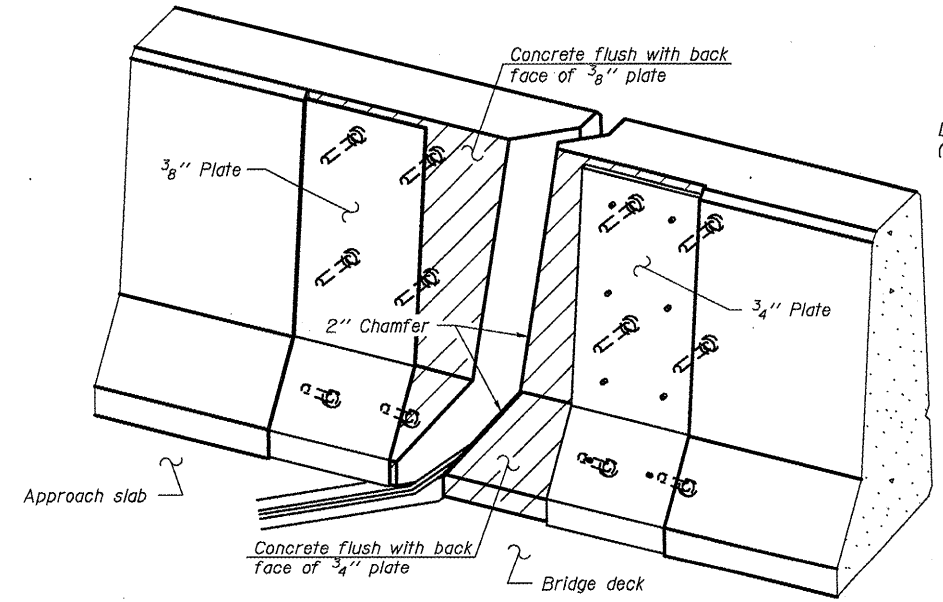
7/16" φ holes at 4'-0" cts. for 3/8" φ bolts. All bolts shall be burned, sawed, or chipped off flush with the plates after forms are removed, typ.

7/16" φ holes at 4'-0" cts. for 3/8" φ bolts. All bolts shall be burned, sawed, or chipped off flush with the plates after forms are removed, typ.

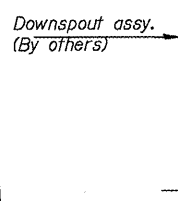


ROLLED EXTRUDED RAIL WELDED RAIL

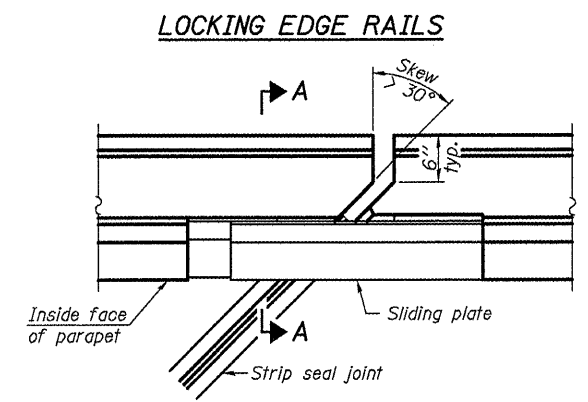
*** Back gouge not required if complete joint penetration is verified by mock-up.



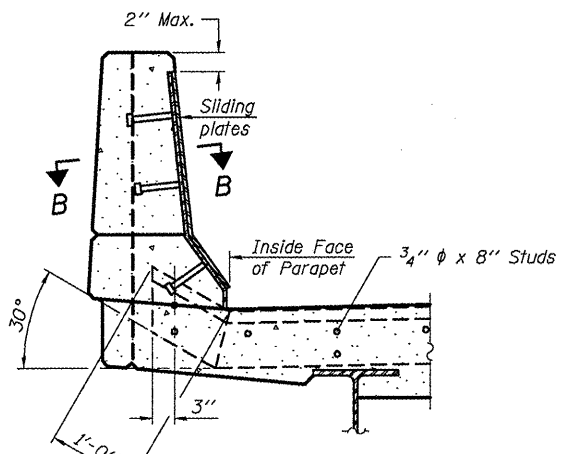
TRIMETRIC VIEW (Showing back plates only)



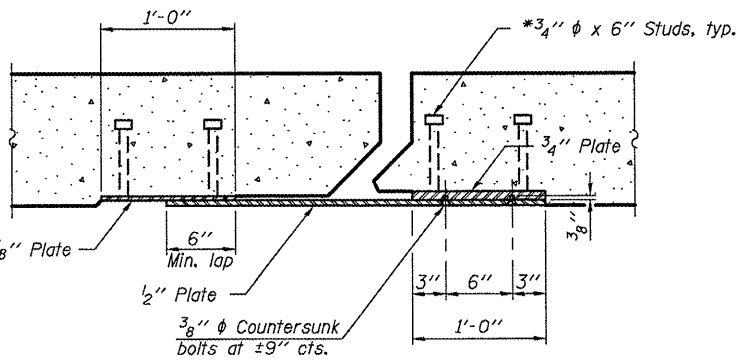
Notes:
 The strip seal shall be made continuous and shall have a minimum thickness of 1/4". The configuration of the strip seal shall match the configuration of the Locking Edge Rails. Open or "webbed" strip seal gland configurations are not permitted. The gland shall be sized for a maximum rated movement of 4 inches.
 The Locking Edge Rails depicted are conceptual only, except for the minimum dimensions shown. The actual configuration of the Locking Edge Rails and matching strip seal may vary from manufacturer to manufacturer. Flanged edge rails will not be allowed. Locking Edge Rails may be spliced at slope discontinuities.
 The manufacturer's recommended installation methods shall be followed.
 The joint opening and deck dimensions detailed on the superstructure are based on a rolled rail expansion joint. If the Contractor elects to use the welded rail expansion joint, the opening and deck dimensions shall be modified according to the dimensions detailed on this sheet. Required modifications shall be made at no additional cost to the State.
 All steel components shall be galvanized after fabrication according to Article 520.03 of the Standard Specifications.
 Maximum space between rail segments at stage lines shall be 3/16", sealed with a suitable sealant.



PLAN



POINT BLOCK DETAILS (for skews > 30°)



SECTION B-B

BILL OF MATERIAL

ITEM	UNIT	TOTAL
Preformed Joint Strip Seal	Foot	36

PREFORMED JOINT STRIP SEAL STRUCTURE NO.

S:\GEN\DRAWING\STANDARD\BRIDGE CONTRACTS\JOINTS\JOINTS\JOINTS\11-1-09\11-1-09-1111C.dgn

FILE NAME =	USER NAME = #USER#	DESIGNED - CEJ	REVISED -
#FILE#		DRAWN - CEJ	REVISED -
	PLOT SCALE = #SCALE#	CHECKED -	REVISED -
	PLOT DATE = #DATE#	DATE - 11/18/2009	REVISED -

**STATE OF ILLINOIS
DEPARTMENT OF TRANSPORTATION**

D4 REPLACEMENT STRIP SEAL DETAIL			
SCALE:	SHEET NO. OF SHEETS	STA.	TO STA.

RTE.	SECTION	COUNTY	TOTAL SHEETS	SHEET NO.
702	(114BR-1)I	WOODFORD	23	21
MISC. BRIDGE REPAIRS		CONTRACT NO. 68928		
FED. ROAD DIST. NO. 4 ILLINOIS FED. AID PROJECT				

SN. 102-0041 IL117 6VR
MILL CRK. S. OF US24

11-1-09