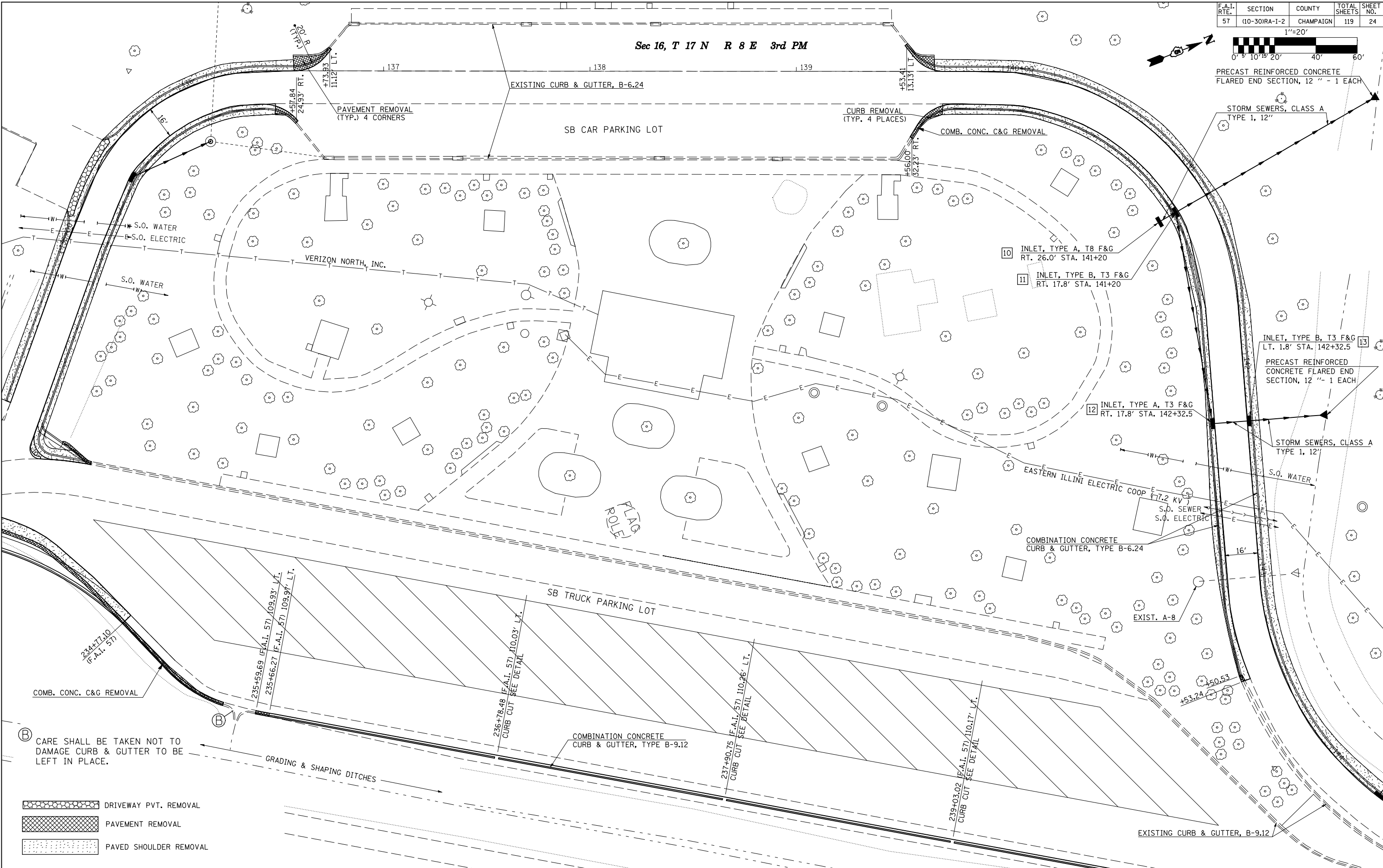


F.A.I. RTE.	SECTION	COUNTY	TOTAL SHEETS	SHEET NO.
57	10-30IRA-1-2	CHAMPAIGN	119	24



Sec 16, T 17 N R 8 E 3rd PM



PRECAST REINFORCED CONCRETE FLARED END SECTION, 12" - 1 EACH

STORM SEWERS, CLASS A TYPE 1, 12"

10 INLET, TYPE A, T8 F&G RT. 26.0' STA. 141+20

11 INLET, TYPE B, T3 F&G RT. 17.8' STA. 141+20

13 INLET, TYPE B, T3 F&G LT. 1.8' STA. 142+32.5

PRECAST REINFORCED CONCRETE FLARED END SECTION, 12" - 1 EACH

12 INLET, TYPE A, T3 F&G RT. 17.8' STA. 142+32.5

STORM SEWERS, CLASS A TYPE 1, 12"

EASTERN ILLINI ELECTRIC COOP (7.2 KV) S.O. SEWER S.O. ELECTRIC

COMBINATION CONCRETE CURB & GUTTER, TYPE B-6.24

SB TRUCK PARKING LOT

COMBINATION CONCRETE CURB & GUTTER, TYPE B-9.12

EXISTING CURB & GUTTER, B-9.12

CARE SHALL BE TAKEN NOT TO DAMAGE CURB & GUTTER TO BE LEFT IN PLACE.

- DRIVEWAY PVT. REMOVAL
- PAVEMENT REMOVAL
- PAVED SHOULDER REMOVAL