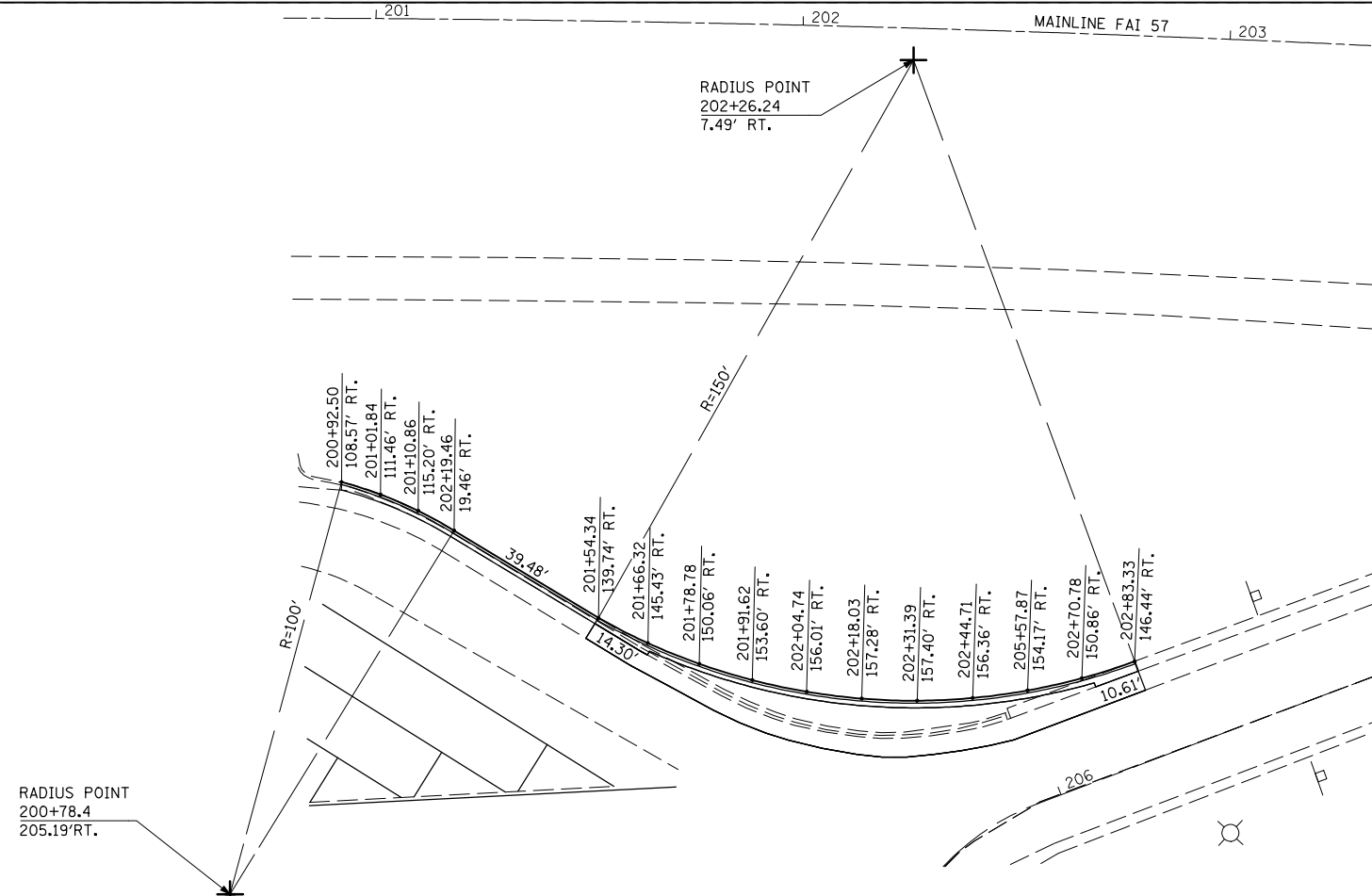


F.A.I. RTE.	SECTION	COUNTY	TOTAL SHEETS	SHEET NO.
57	(10-30)RA-1-2	CHAMPAIGN	119	33
STA.		TO STA.		
FED. ROAD DIST. NO.	ILLINOIS	FED. AID PROJECT		

LAYOUT DETAIL
B-9.12 TO B-6.24 CURB & GUTTER TRANSITION

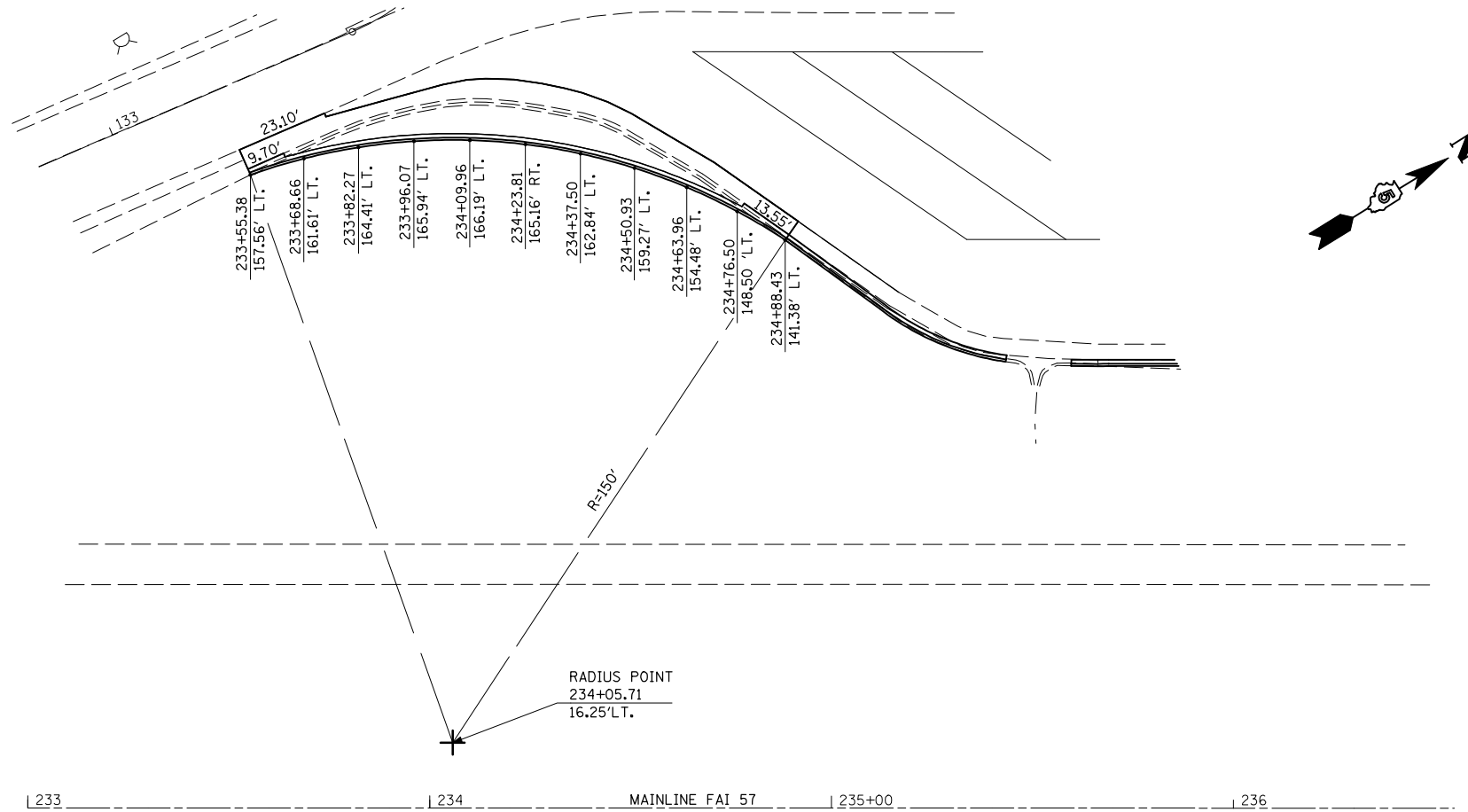
NORTHBOUND
STA 200 + 95.50 – STA. 202 + 83.33
(STATIONING FROM I-57)



NOTE: ALL STATIONS AND OFFSETS ARE TO THE BACK OF PROPOSED CURB

LAYOUT DETAIL
B-9.12 TO B-6.24 CURB & GUTTER TRANSITION

SOUTHBOUND
STA. 233 + 55.38 – STA. 234 + 88.43
(STATIONING FROM I-57)



NOTE: ALL STATIONS AND OFFSETS ARE TO THE BACK OF PROPOSED CURB

REVISIONS	
NAME	DATE

ILLINOIS DEPARTMENT OF TRANSPORTATION

LAYOUT DETAIL OF
CCC & G TRANSITION
FROM B-9.12 TO B-6.24

SCALE: VERT.
HORIZ.
DATE

DRAWN BY
CHECKED BY