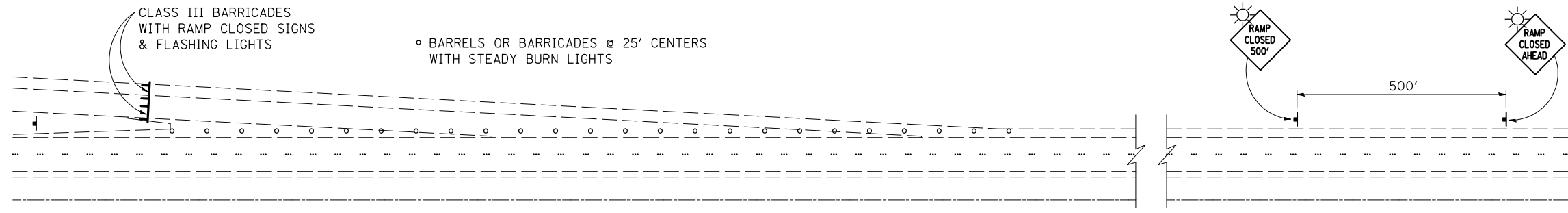


F.A.I. RTE.	SECTION	COUNTY	TOTAL SHEETS	SHEET NO.
57	(10-30)RA-I-2	CHAMPAIGN	119	38



**TYPICAL APPLICATION OF TRAFFIC CONTROL DEVICES FOR ROAD CLOSURE FOR REST AREA ENTRANCE RAMP**

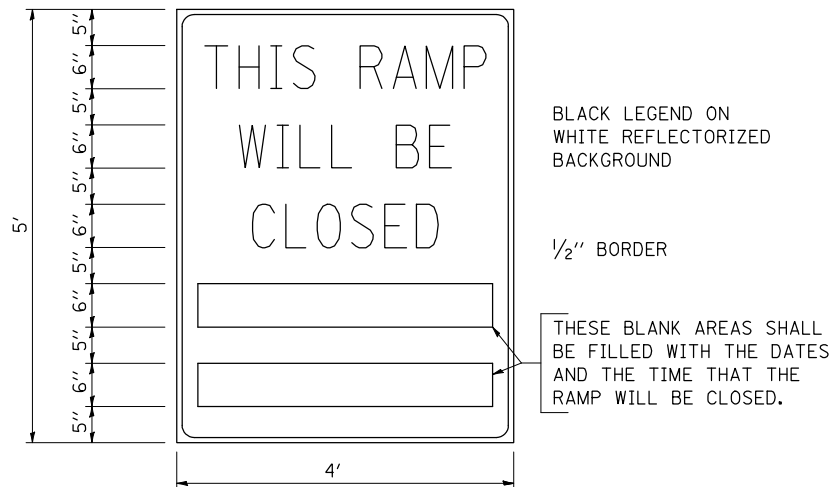
**GENERAL NOTES:**

THESE ITEMS WILL NOT BE PAID FOR SEPARATELY BUT SHALL BE CONSIDERED AS INCIDENTAL TO THE CONTRACT.

THE FOLLOWING SIGNS WILL NOT BE NEEDED AS PART OF THIS SET-UP OF TRAFFIC CONTROL AND PROTECTION (SPECIAL):

- 1 - WORK ZONE SPEED LIMIT SIGNS
- 2 - CONSTRUCTION SPEED LIMIT SIGNS
- 3 - END WORK ZONE SPEED LIMIT SIGNS

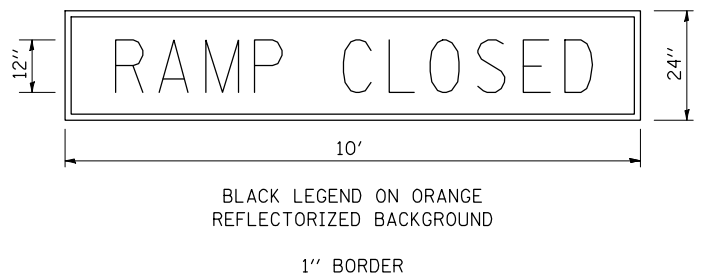
CONTACT THE DISTRICT TRAFFIC OPERATIONS ENGINEER AT 217-465-4181, ONE WEEK PRIOR TO CLOSING THE RAMP.



- GENERAL NOTES:**
1. CONES MAY BE SUBSTITUTED FOR DRUMS OR TYPE II BARRICADES DURING DAY OPERATIONS. CONES SHALL BE A MINIMUM OF 28 INCHES HIGH.
  2. STEADY BURN LIGHTS WILL NOT BE REQUIRED FOR DAY OPERATIONS.
  3. A FLAGGER SHALL BE POSITIONED AT EACH CLOSED RAMP THAT IS OPEN TO CONSTRUCTION VEHICLES.
  4. FOR DAYTIME RAMP CLOSURES, LASTING 6 HOURS OR LESS, THE CONTRACTOR MAY ELIMINATE THE ADVANCE WARNING SIGNS ON THE EXIT GUIDE SIGNS.
  5. ALL ROUTE MARKERS AND TRAILBLAZER ASSEMBLIES WHICH DIRECT MOTORISTS TO A CLOSED ENTRANCE RAMP SHALL BE COVERED.
  6. THE SIGNING AND BARRICADING WHICH IS REQUIRED BY THIS DETAIL SHALL BE CONSIDERED INCIDENTAL TO THE CONTRACT AND NO COMPENSATION SHALL BE ALLOWED.
  7. THE RAMP CLOSURE ADVANCE INFORMATION SIGNS SHALL BE ERECTED IF THE CLOSURE TIME EXCEEDS TWENTY FOUR (24) HOURS.
  8. ADDITIONAL ADVANCE WARNING SIGNS ON EXIT GUIDE SIGNING WILL BE REQUIRED FOR EXIT RAMP CLOSURES THAT EXCEED TWENTY FOUR (24) HOURS IN LENGTH.
  9. THE CONSTRUCTION SHALL BE DONE IN STAGES. THROUGHOUT THE CONSTRUCTION PROCESS, ONLY REST AREA MAY BE COMPLETELY CLOSED. AT NO TIME SHALL THE CONTRACTOR BE ALLOWED TO WORK ON BOTH LOCATIONS AT THE SAME TIME. ALL WORK MUST BE COMPLETE PRIOR TO THE CONTRACTOR BEGINNING WORK AT THE SECOND LOCATION.

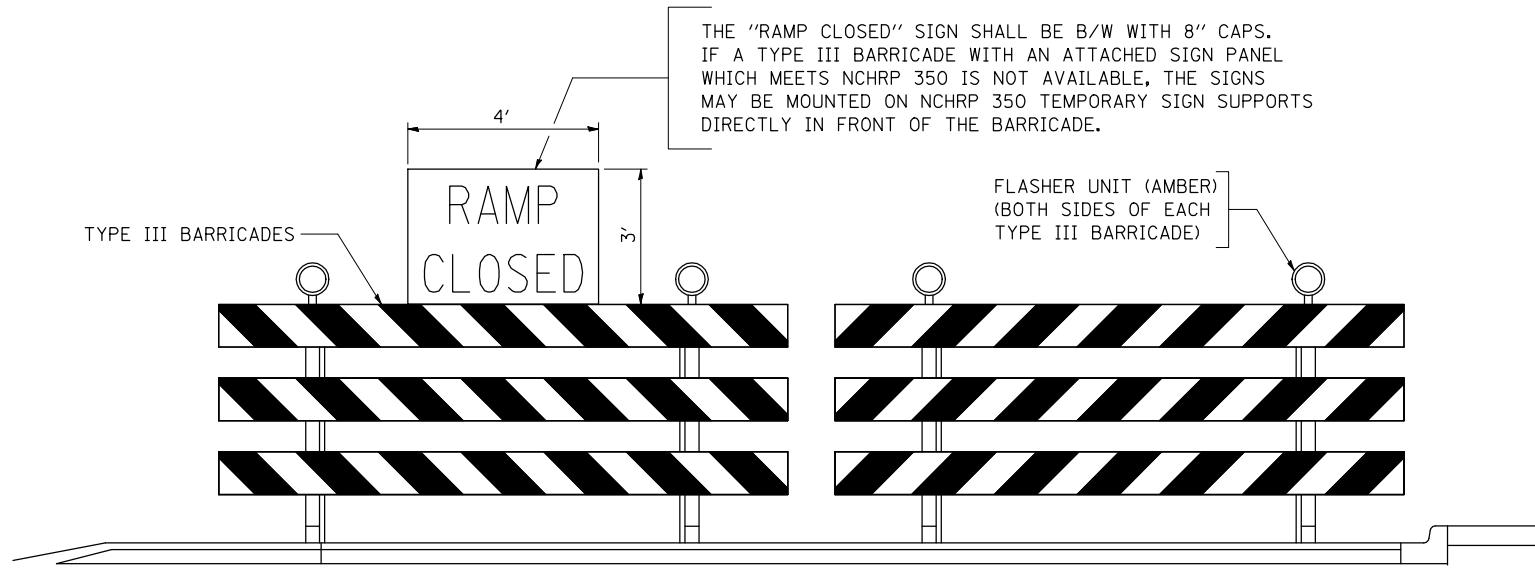
THESE SIGNS ARE REQUIRED ON BOTH SIDES OF THE RAMP, A MINIMUM OF 1 WEEK IN ADVANCE OF THE CLOSURE.

**RAMP CLOSURE ADVANCE INFORMATION SIGN**



THESE SIGNS ARE REQUIRED ON ALL THE EXIT GUIDE SIGNS FOR THE CLOSED EXIT RAMP.

**RAMP CLOSURE ADVANCE WARNING SIGN**



**DETAIL FOR REQUIRED BARRICADES & SIGNS**

ILLINOIS DEPARTMENT OF TRANSPORTATION  
**REST AREA**  
**RAMP CLOSURE DETAIL**  
 F.A.I. ROUTE 57  
 SECTION (10-30)RA-I-2  
 CHAMPAIGN COUNTY  
 SCALE: NOT TO SCALE  
 DATE: 11-18-09  
 DRAWN BY: JMS  
 CHECKED BY:

PLOT DATE = 12/2/2009  
 FILE NAME = c:\p\work\11001\SHERERJMA.dwg  
 PLOT SCALE = 211.7647 / IN.  
 USER NAME = shererjm