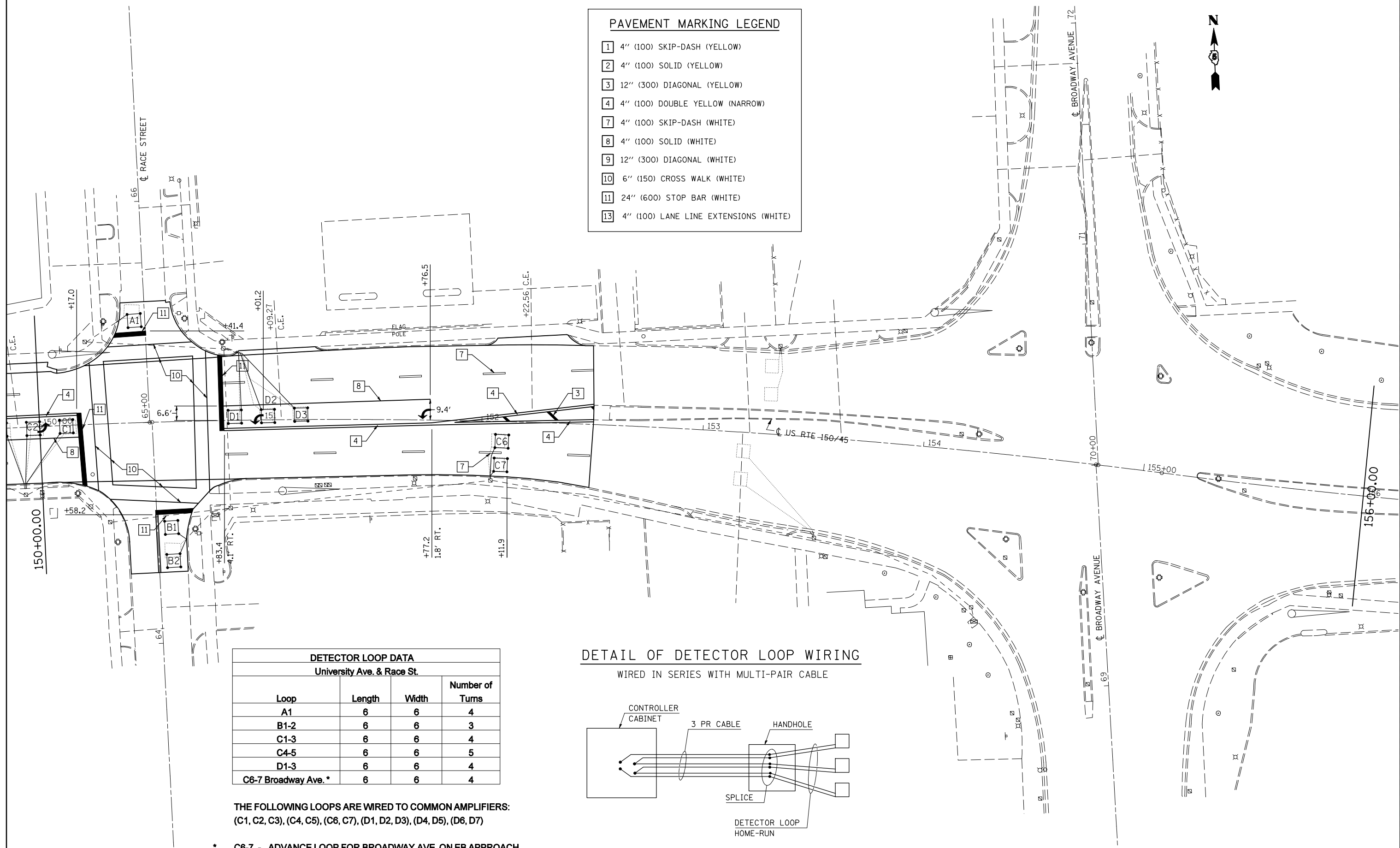


PAVEMENT MARKING LEGEND

- 1 4" (100) SKIP-DASH (YELLOW)
- 2 4" (100) SOLID (YELLOW)
- 3 12" (300) DIAGONAL (YELLOW)
- 4 4" (100) DOUBLE YELLOW (NARROW)
- 7 4" (100) SKIP-DASH (WHITE)
- 8 4" (100) SOLID (WHITE)
- 9 12" (300) DIAGONAL (WHITE)
- 10 6" (150) CROSS WALK (WHITE)
- 11 24" (600) STOP BAR (WHITE)
- 13 4" (100) LANE LINE EXTENSIONS (WHITE)

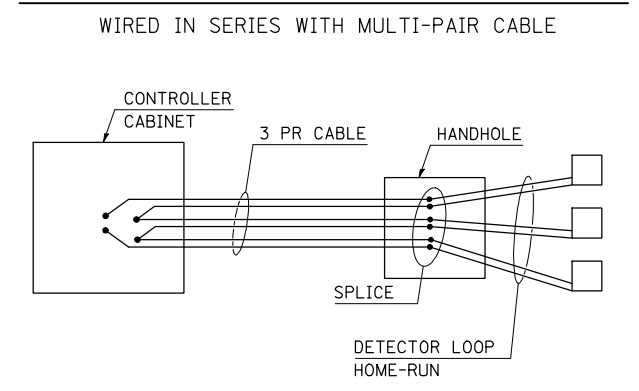


DETECTOR LOOP DATA			
University Ave. & Race St.			
Loop	Length	Width	Number of Turns
A1	6	6	4
B1-2	6	6	3
C1-3	6	6	4
C4-5	6	6	5
D1-3	6	6	4
C6-7 Broadway Ave. *	6	6	4

THE FOLLOWING LOOPS ARE WIRED TO COMMON AMPLIFIERS:
(C1, C2, C3), (C4, C5), (C6, C7), (D1, D2, D3), (D4, D5), (D6, D7)

* C6-7 - ADVANCE LOOP FOR BROADWAY AVE. ON EB APPROACH.

DETAIL OF DETECTOR LOOP WIRING



FILE NAME =	USER NAME = bucklesJJ	DESIGNED -	REVISED -
ce:\pwork\pwidot\BUCKLESJJ\d0141663\0570121-shit-striping_details.dgn		DRAWN -	REVISED -
PLOT SCALE = 40.0000' / IN.		CHECKED -	REVISED -
PLOT DATE = 12/11/2009		DATE -	REVISED -

**STATE OF ILLINOIS
DEPARTMENT OF TRANSPORTATION**

STRIPING & DETECTOR LOOP DETAIL

SCALE: SHEET NO. OF SHEETS STA. 150+00 TO STA. 156+00

F.A.P. RTE.	SECTION	COUNTY	TOTAL SHEETS	SHEET NO.
808	(28Z)RS-5	Champaign	59	51
ILLINOIS FED. AID PROJECT			CONTRACT NO. 70121	