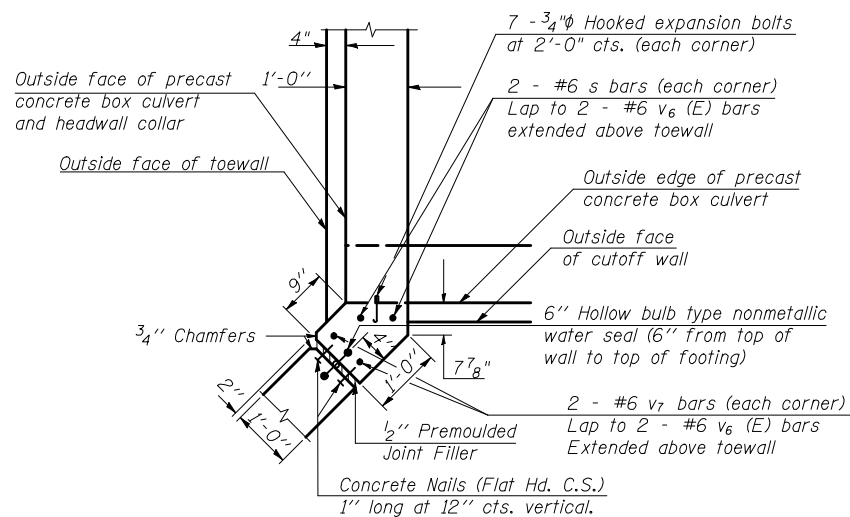
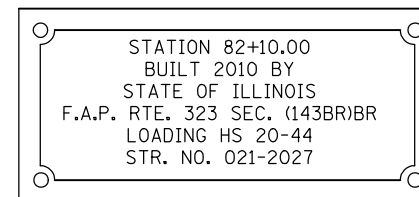


**SECTION B-B  
TOEWALL/CUTOFF WALL DETAIL ONLY  
(SIDE WALL OF PRECAST BOX CULVERT NOT SHOWN)**

NOTE: Place a Non-Shrink Grout bed on top of the cut-off wall in order to evenly distribute the weight of the precast box culvert section on top of it.



**CAST-IN-PLACE CORNER DETAIL  
FOR HEADWALL COLLAR**

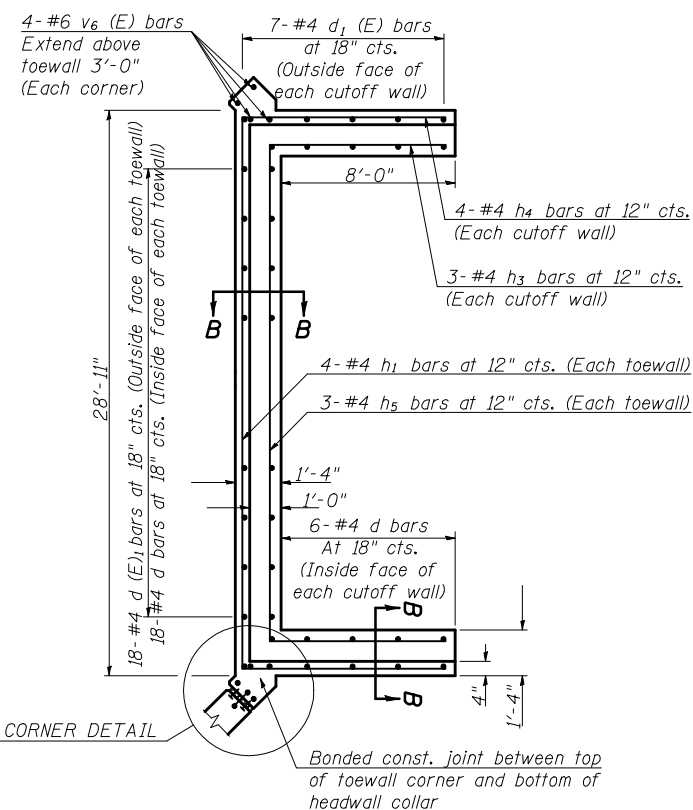


**NAME PLATE**

\* See Highway Standard 515001-03 for dimensions and placement.

\* Name Plate will be paid for at the contract unit price per "EACH" for "NAME PLATES".

**50100100 REMOVE EXISTING STRUCTURES - 1.0 EACH**  
FROM 1954 AS-BUILT PLANS: FOR INFORMATION ONLY  
EXISTING SUPER-STRUCTURE CONCRETE 44.0 CU. YDS.  
EXISTING SUB-STRUCTURE CONCRETE 148.8. CU YDS.  
EXISTING REINFORCEMENT BARS 24, 780 POUNDS



**TOEWALL / CUTOFF WALL DETAIL  
WITH CORNER DIMENSIONS**

S.N. 021-2027  
STA. 82+10.00

FILE NAME =	USER NAME = ceorlockjd	DESIGNED -	REVISED -
ce:\pw\work\PWIDOT\CEARLOCKJD\0110229\70223details.dgn		DRAWN -	REVISED -
		CHECKED -	REVISED -
		DATE -	REVISED -

STATE OF ILLINOIS  
DEPARTMENT OF TRANSPORTATION

CAST-IN-PLACE BOX CULVERT END SECTION DETAIL  
PAGE 2 OF 2

SCALE: SHEET NO. OF SHEETS STA. TO STA.

F.A.P. RTE.	SECTION	COUNTY	TOTAL SHEETS	SHEET NO.
323	(143BR)BR	DOUGLAS	68	15
CONTRACT NO. 70223				
FED. ROAD DIST. NO. ILLINOIS FED. AID PROJECT				