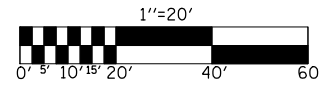
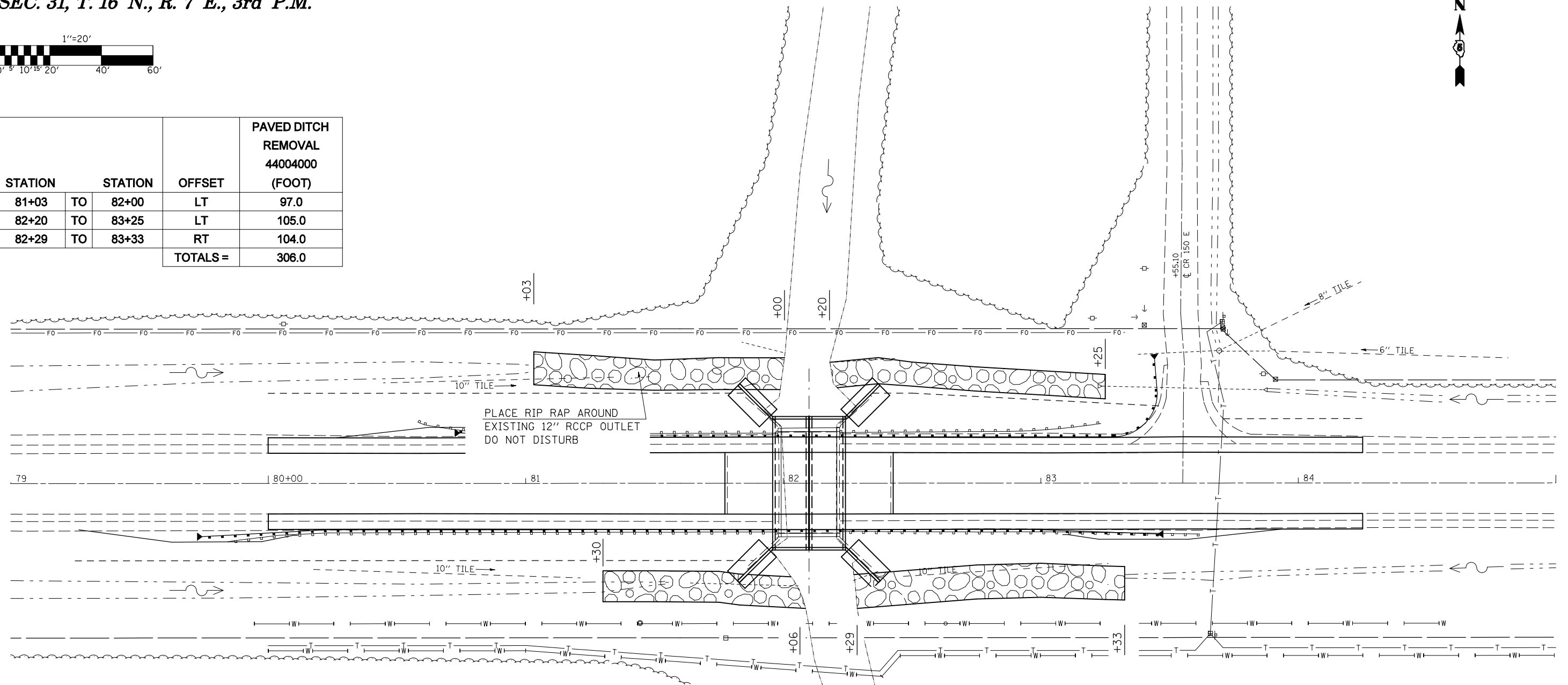



SEC. 31, T. 16 N., R. 7 E., 3rd P.M.



STATION	STATION	OFFSET	PAVED DITCH REMOVAL 44004000 (FOOT)
81+03	TO 82+00	LT	97.0
82+20	TO 83+25	LT	105.0
82+29	TO 83+33	RT	104.0
TOTALS =			306.0



STATION	TO	STATION	OFFSET	LENGTH (FEET)	CONTOUR WIDTH (FEET)	FILTER FABRIC 28200200 (SQ YD)	STONE RIPRAP	STONE RIPRAP CLASS A4 (TONS)	BEDDING STONE (TONS)
							CLASS A4 28100107 (SQ YD)		
81+03		82+00	LT	97.00	14.00	151.00	151.00	100.67	45.30
81+30		82+06	RT	76.00	12.00	102.00	102.00	68.00	30.60
82+20		83+25	LT	105.00	10.00	117.00	117.00	78.00	35.10
82+29		83+33	RT	104.00	14.00	162.00	162.00	108.00	48.60
TOTALS =						532.00	532.00	354.67	159.60

 STONE RIPRAP, CLASS A4, 16" WITH 6" OF A1 BEDDING STONE AND FILTER FABRIC. SEE ART. 281.04 (A)

NOTES:

1. STONE RIPRAP AND BEDDING STONE TONAGE QUANTITIES ARE AN ESTIMATE AND FOR INFORMATION ONLY.
2. STONE RIPRAP IS ESTIMATED BASED ON 1.5 TONS PER CU YD.
3. BEDDING STONE IS ESTIMATED BASED ON 1.8 TONS PER CU YD.

SEC. 5, T. 15 N., R. 7 E., 3rd P.M.