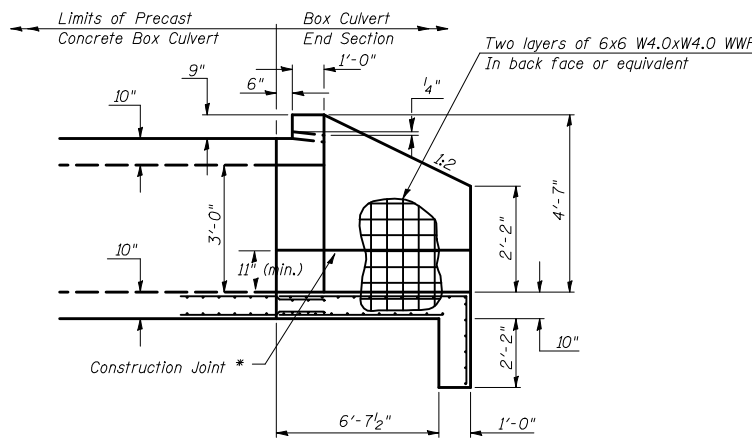
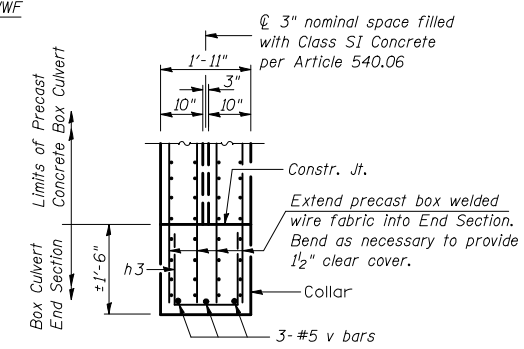


END ELEVATION



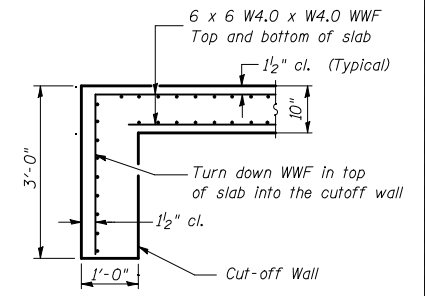
HALF SIDE ELEVATION

(DIMENSIONS AT RIGHT ANGLES TO CL OF ROADWAY)

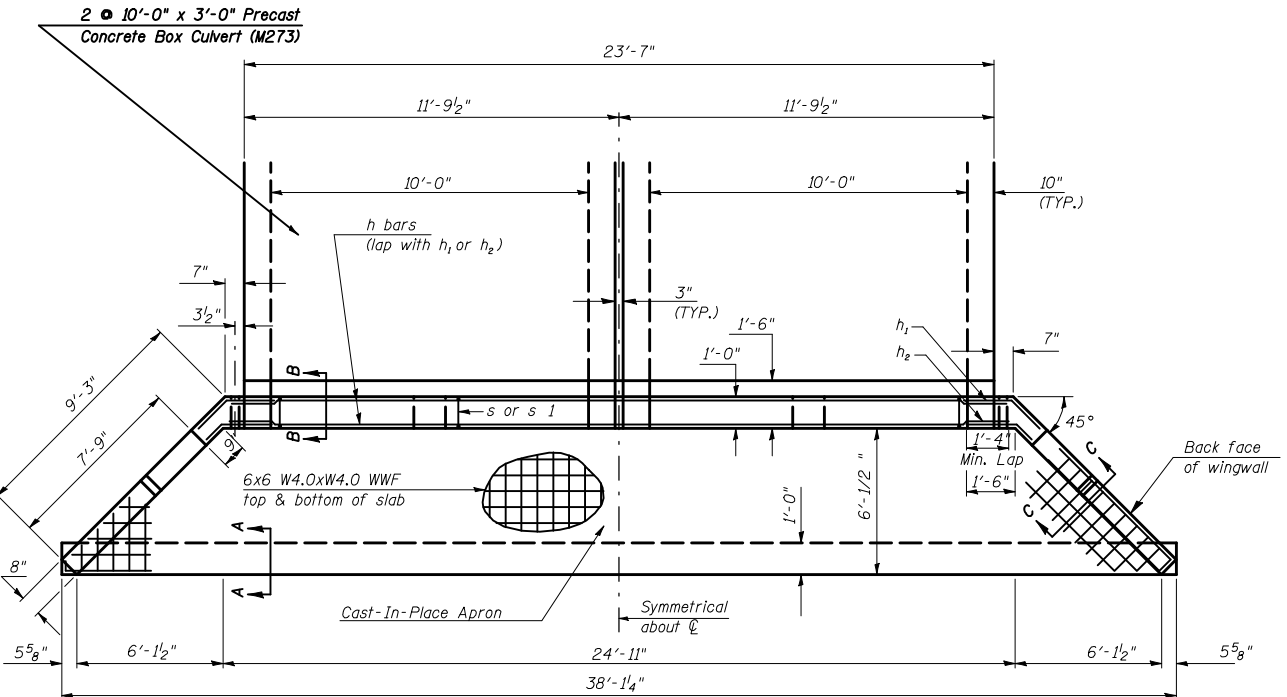


SECTION E-E

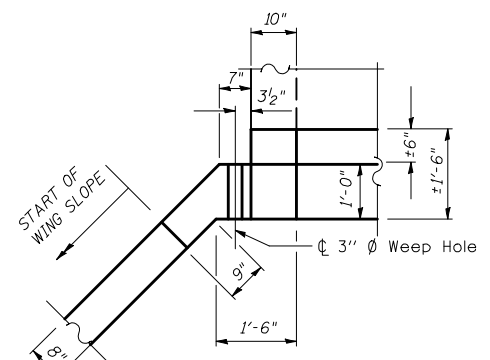
Tilt or adjust h3 bar as necessary to fit



SECTION A-A

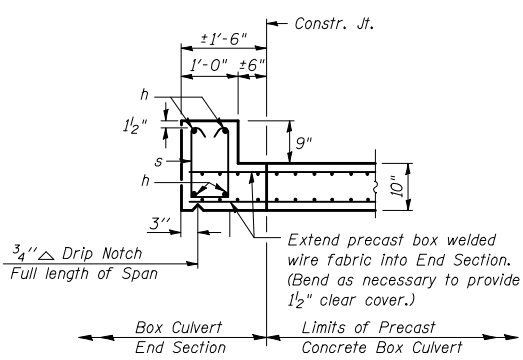


PLAN



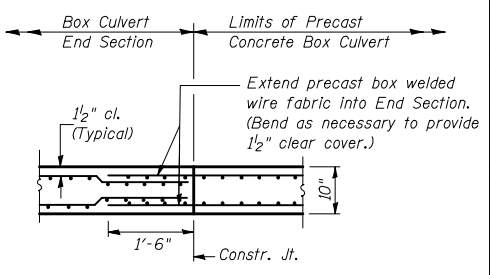
CORNER DETAIL

(Showing dimensions and weep hole)



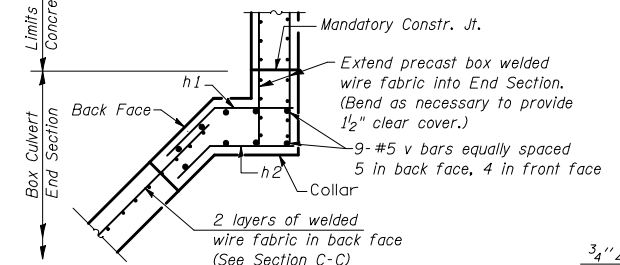
SECTION F-F

TOP SLAB / HEADWALL DOWNSTREAM END



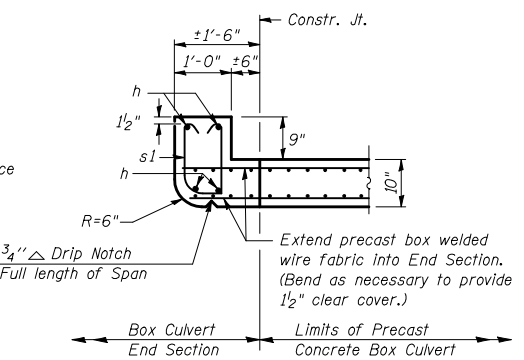
SECTION B-B

(BOTTOM SLAB)



SECTION D-D

(Showing reinforcement)



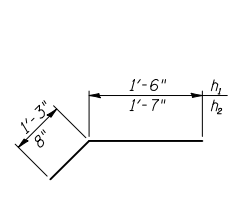
SECTION F-F

TOP SLAB / HEADWALL UPSTREAM END

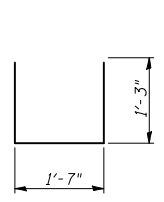
BILL OF MATERIAL

For Information Only (ONE END SECTION)

Bar	No.	Size	Length	Shape	
h	4	#6	24'-6"	—	
h1	12	#4	2'-9"	—	
h2	12	#4	2'-3"	—	
h3	6	#4	4'-1"	—	
s or s1	24	#4	4'-2"	—	
v	18	#5	5'-2"	—	
Item				Unit	Total
CONCRETE BOX CULVERTS				Cu. Yd.	25.2
Reinforcement Bars				Pound	370.0
Welded Wire Fabric				Sq. Ft.	623.0
Name Plate				Each	1

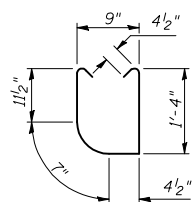


h1 & h2 BARS



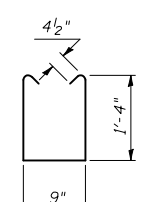
h3 BARS

DOWNSTREAM END



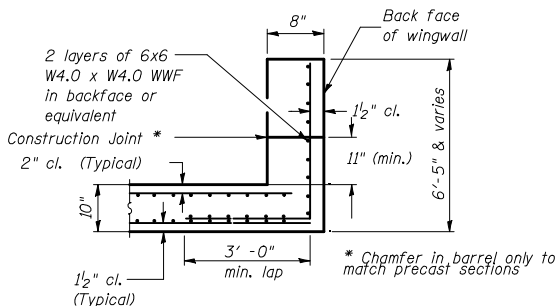
s1 BARS

UPSTREAM END



s BARS

DOWNSTREAM END



SECTION C-C

* Chamfer in barrel only to match precast sections

END SECTION DETAIL
DOUBLE 10'X3' PRECAST BOX CULVERT
F.A.P. ROUTE 709 - SECTION (101, 102)X,R-2
MCLEAN COUNTY STATION 354+72.83
CULVERT NO. 8 SN 057-2044(P)

FILE NAME =	USER NAME = bucklesj	DESIGNED -	REVISED -
ca:\pw\work\p\dot\bucklesj\d0170848\057-2044-sht-details.dgn		DRAWN -	REVISED -
PLOT SCALE = 40.0000' / IN.		CHECKED -	REVISED -
PLOT DATE = 12/9/2009		DATE -	REVISED -

STATE OF ILLINOIS
DEPARTMENT OF TRANSPORTATION

END SECTION DETAIL
BOX CULVERT #8; S.N. 057-2044

SCALE: SHEET NO. OF SHEETS STA. TO STA.

F.A.P. RTE.	SECTION	COUNTY	TOTAL SHEETS	SHEET NO.
315	*	MCLEAN	115	57
*101,102X,RS-2 & 55RS-PRK LN		CONTRACT NO.	70507	
ILLINOIS FED. AID PROJECT				