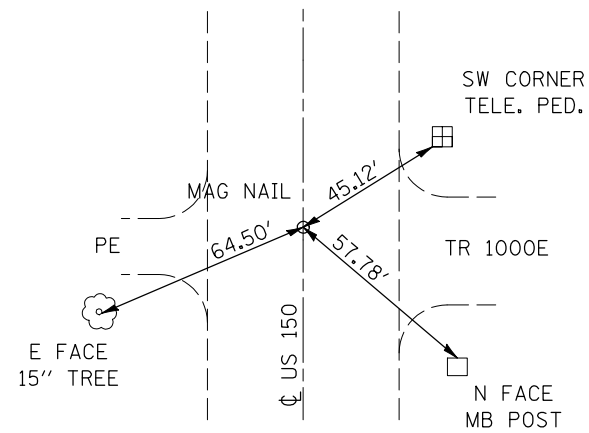
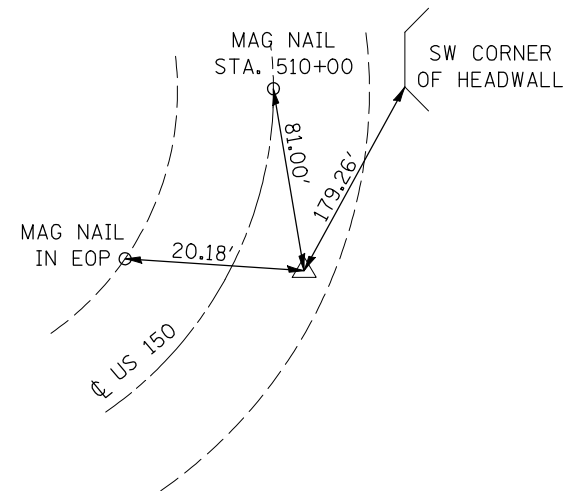


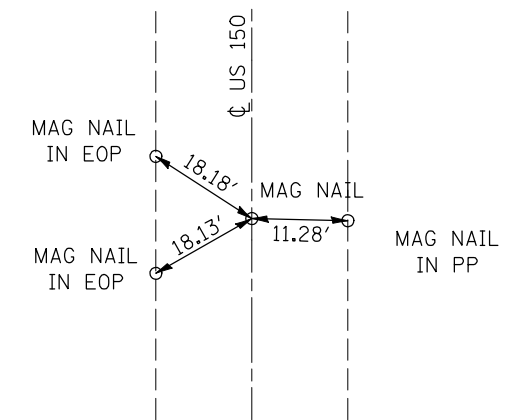
P.C.
STA. 499 + 60.74



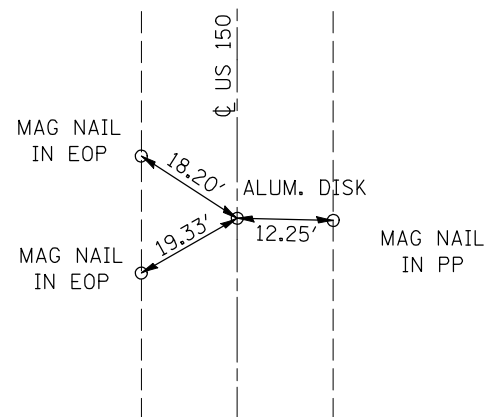
P.I.
STA. 465 + 87.30, 5.24' LT.



P.T./STA. EQUATION
STA. 522 + 00.58 BK
STA. 523 + 17.54 AH



P.O.T.
STA. 568 + 66.23



BENCHMARKS

- BM #4842-1 CHISELED SQUARE ON TOP OF W HEADWALL OF A.R.P.C., STA. 564+08.30, 38.61' RT., ELEV. 792.58
- BM #4842-2 CHISELED SQUARE ON TOP OF E HEADWALL OF A.R.B.C., STA. 537+33.51, 38.26' LT., ELEV. 800.33
- BM #4842-3 CHISELED SQUARE ON TOP OF E HEADWALL OF A.R.P.C., STA. 503+49.76, 34.97' LT., ELEV. 815.31
- BM #4842-4 CHISELED SQUARE ON TOP OF SE CORNER OF E HEADWALL OF A.R.P.C., STA. 413+15.94, 49.20' LT., ELEV. 831.38
- BM #4842-5 CHISELED SQUARE ON TOP OF SW CORNER OF S HEADWALL OF A.R.B.C., STA. 319+64.06, 30.65' RT., ELEV. 762.16
- BM #4842-6 CHISELED SQUARE ON TOP OF E HEADWALL OF A.R.B.C., STA. 279+36.06, 29.86' LT., ELEV. 755.18
- BM #4842-7 CHISELED SQUARE ON TOP OF E HEADWALL OF A.R.B.C., STA. 244+81.40, 30.80' LT., ELEV. 776.74

FILE NAME =	USER NAME = piersonbr	DESIGNED -	REVISED -
ct:\pw\work\PIWIDOT\PIERSONBR\d0115438\0523-sht- ATB.dgn		DRAWN -	REVISED -
	PLOT SCALE = 40.0000' / IN.	CHECKED -	REVISED -
	PLOT DATE = 12/4/2009	DATE -	REVISED -

STATE OF ILLINOIS
DEPARTMENT OF TRANSPORTATION

TIE POINTS & BENCHMARKS

SCALE: SHEET NO. OF SHEETS STA. TO STA.

F.A.S. RTE.	SECTION	COUNTY	TOTAL SHEETS	SHEET NO.
2466	(9,10,11)RS-3	McLean	47	20
CONTRACT NO. 70523			ILLINOIS FED. AID PROJECT	