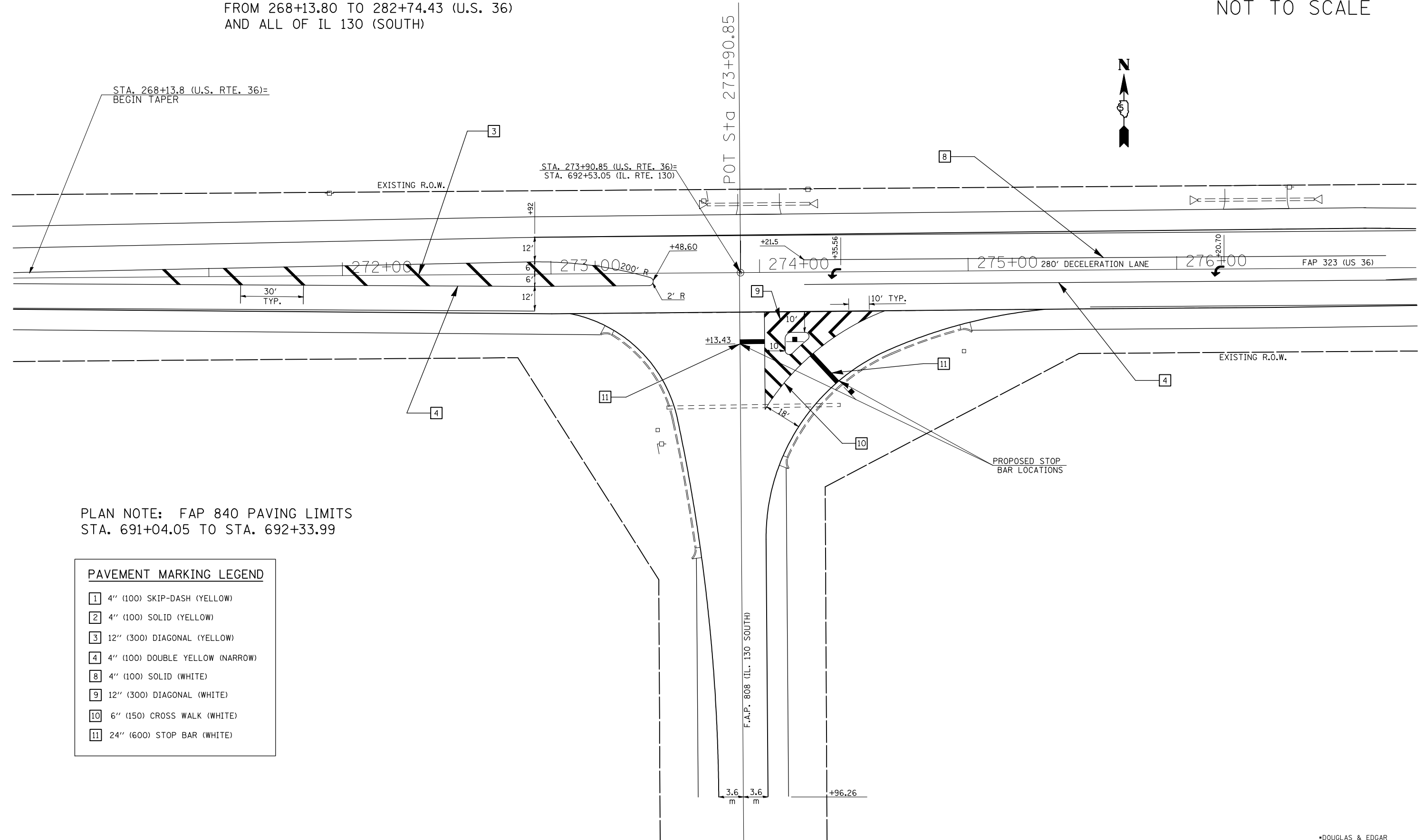


THERMOPLASTIC LIMITS  
 FROM 268+13.80 TO 282+74.43 (U.S. 36)  
 AND ALL OF IL 130 (SOUTH)

NOT TO SCALE



PLAN NOTE: FAP 840 PAVING LIMITS  
 STA. 691+04.05 TO STA. 692+33.99

**PAVEMENT MARKING LEGEND**

- 1 4" (100) SKIP-DASH (YELLOW)
- 2 4" (100) SOLID (YELLOW)
- 3 12" (300) DIAGONAL (YELLOW)
- 4 4" (100) DOUBLE YELLOW (NARROW)
- 8 4" (100) SOLID (WHITE)
- 9 12" (300) DIAGONAL (WHITE)
- 10 6" (150) CROSS WALK (WHITE)
- 11 24" (600) STOP BAR (WHITE)

•DOUGLAS & EDGAR

FILE NAME =	USER NAME = shererjm	DESIGNED - JMS	REVISED -
et\pw\work\PWIDOT\SHERERJM\d0115071\707600\details.dgn		DRAWN - JMS	REVISED -
	PLOT SCALE = 40.0000' / IN.	CHECKED - JMS	REVISED -
	PLOT DATE = 11/27/2009	DATE - 12/29/08	REVISED -

**STATE OF ILLINOIS  
 DEPARTMENT OF TRANSPORTATION**

**STRIPING DETAILS IL 130 SOUTH**

SCALE: N/A SHEET NO. 1 OF 4 SHEETS STA. 691+00.00 TO STA. 692+33.99

F.A.P. RTE.	SECTION	COUNTY	TOTAL SHEETS	SHEET NO.
323	(145,146)RS-3 & 147RS-5	*	27	17
				CONTRACT NO. 70760
ILLINOIS FED. AID PROJECT				