

STATE OF ILLINOIS
DEPARTMENT OF TRANSPORTATION
DIVISION OF HIGHWAYS
PROPOSED
HIGHWAY PLANS
FAP ROUTE 658 (IL 29)
SECTION D6 RUMBLE STRIP, MRKING 2010

FOR INDEX OF SHEETS, SEE SHEET NO. 02

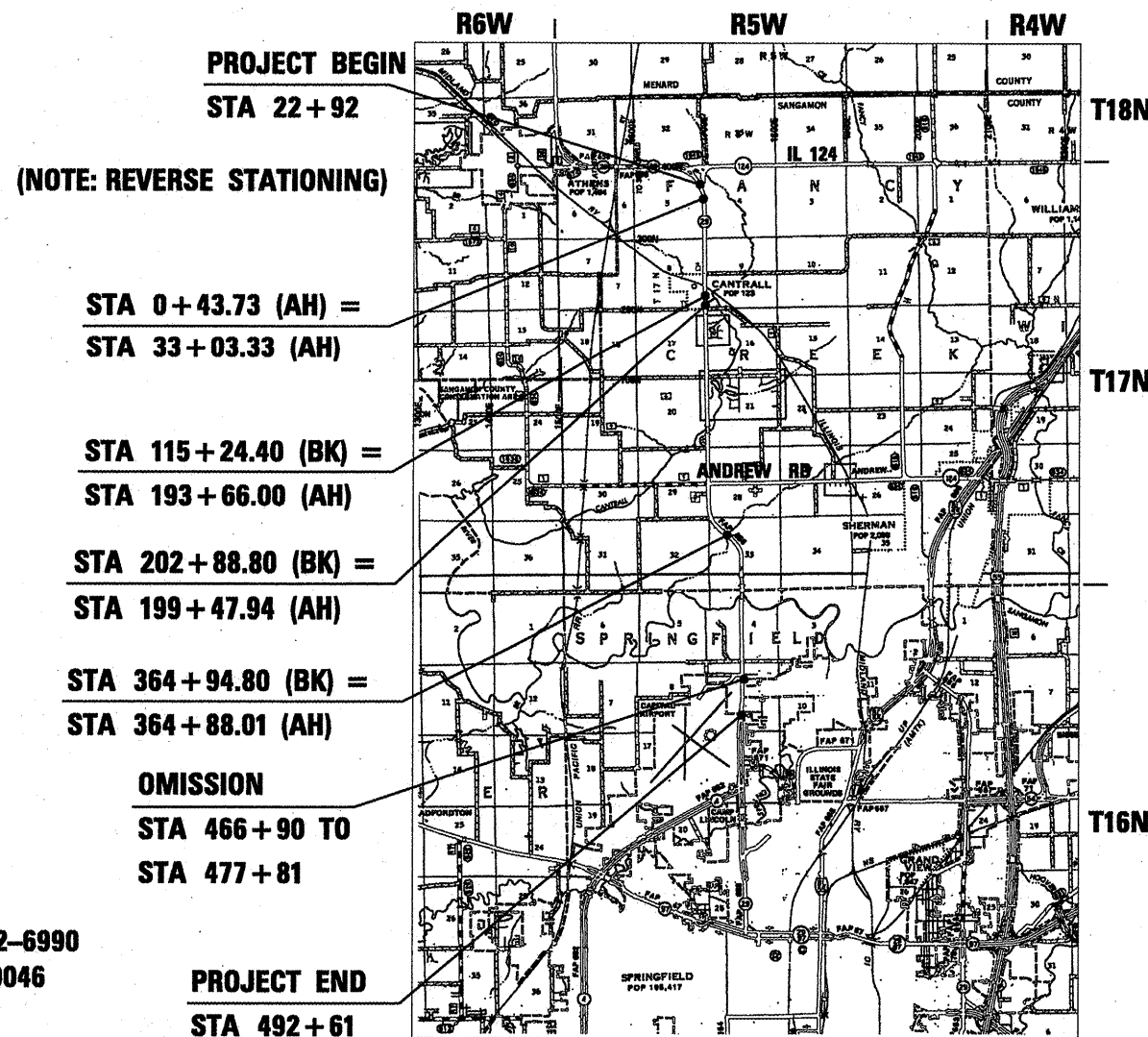
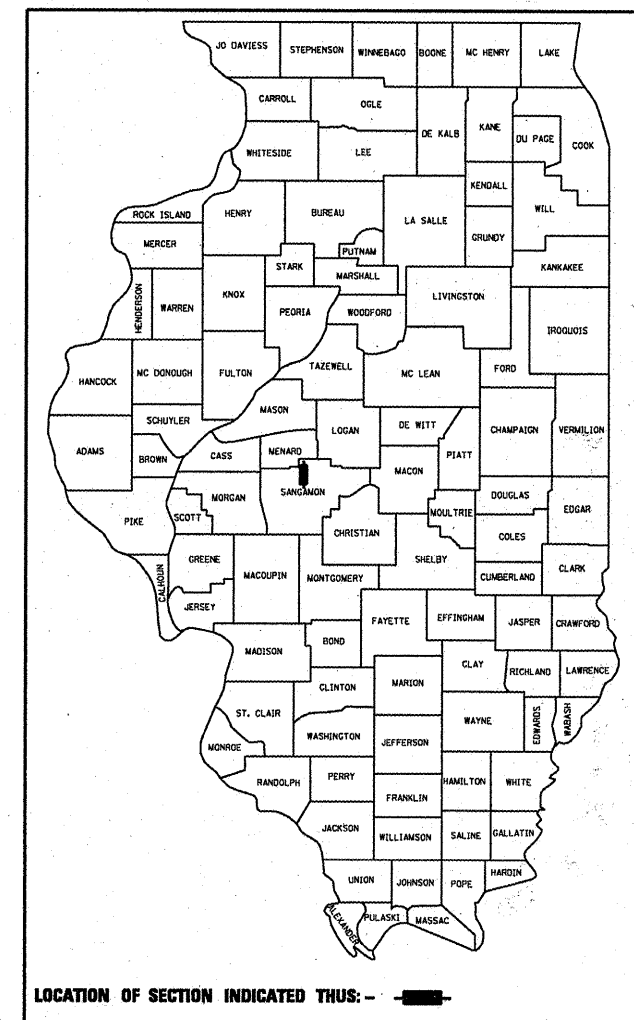
PROJ. ACHSIP-0658(023)
SANGAMON COUNTY

C-96-123-10

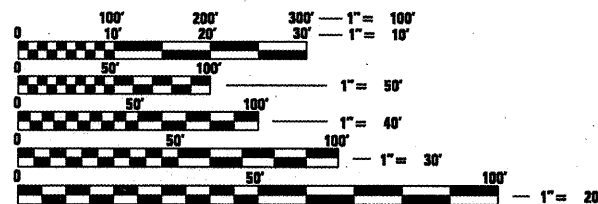
F.A.P. RTE.	SECTION	COUNTY	TOTAL SHEETS	SHEET NO.
658		ILLINOIS	16	1
		CONTRACT NO. 72D19		

• D6 RUMBLESTRIP, MRKING 2010
 SANGAMON

D-96-123-10



GROSS LENGTH = 40,712 FT. = 7.71 MILE
 NET LENGTH = 39,621 FT. = 7.50 MILE



FULL SIZE PLANS HAVE BEEN PREPARED USING STANDARD ENGINEERING SCALES. REDUCED SIZED PLANS WILL NOT CONFORM TO STANDARD SCALES. IN MAKING MEASUREMENTS ON REDUCED PLANS, THE ABOVE SCALES MAY BE USED.

J.U.L.I.E.
 JOINT UTILITY LOCATION INFORMATION FOR EXCAVATION
 1-800-892-0123
 OR 811

PROJECT ENGINEER JOHN NEGANGARD 217-782-6990
 PROJECT MANAGER VINCE MADONIA 217-785-9046

CONTRACT NO. 72D19

STATE OF ILLINOIS
 DEPARTMENT OF TRANSPORTATION
 DIVISION OF HIGHWAYS

SUBMITTED *August 31, 2009*
Ross D. Orkell
 DEPUTY DIRECTOR OF HIGHWAYS, REGION ENGINEER

October 2, 2009
Charles J. Ingersoll
 ENGINEER OF DESIGN AND ENVIRONMENT

October 2, 2009
Christine M. Reed
 DIRECTOR OF HIGHWAYS, CHIEF ENGINEER

PRINTED BY THE AUTHORITY
OF THE STATE OF ILLINOIS

GENERAL NOTES AND COMMENTS

1. ALL ENTRANCES CURRENTLY IN USE SHALL REMAIN ACCESSIBLE BOTH DURING AND AFTER CONSTRUCTION.
2. NO LANE CLOSURES WILL BE ALLOWED WITHOUT FLAGGER PROTECTION AND NO WORK OR LANE CLOSURES PRIOR TO 9:00 AM OR AFTER 3:30 PM
3. FIELD/RESIDENT ENGINEER SHALL COORDINATE WITH OPERATION TO VERIFY NO PASSING ZONES, BUT SHALL CONTACT STUDIES & PLANS CONCERNING COMMITMENTS AND REASONS FOR PROPOSED CHANGES IN NO PASSING ZONES FROM PREVIOUS PAVEMENT MARKINGS.
4. THERE SHALL BE NO LANE CLOSURES WITHIN THE LIMITS OF THIS PROJECT DURING THE ILLINOIS STATE FAIR.

COMMITMENTS

THE FIELD/RESIDENT ENGINEER SHALL CONTACT STUDIES AND PLANS CONCERNING ANY MAJOR PLAN CHANGES TO MAKE SURE NO PREVIOUS COMMITMENTS (NOT LISTED) WERE MADE AFFECTING THE DESIGN, AND ALLOW AN IMPROVED DESIGN FOR FUTURE PROJECTS.

EXPERIMENTAL FEATURES - CENTERLINE RUMBLE STRIPS & SHOULDER RUMBLE STRIPS ON TWO-LANE RURAL HIGHWAY.

PROPOSED SCOPE OF WORK - REP. POE.

INDEX OF SHEETS

- 1 COVER SHEET
- 2 GENERAL NOTES
- 3 SUMMARY OF QUANTITIES
- 4-5 SCHEDULES
- 6-13 LINE DIAGRAM
- 14-15 INTERSECTION MARKING DETAILS
- 16 RUMBLE STRIP DETAILS

LIST OF STANDARDS

- 701001-02
- 701006-03
- 701011-02
- 701301-03
- 701306-02
- 701311-03
- 701901-01
- 780001-02
- 781001-03

DISTRICT SIX	
EXAMINED <u>Aug 28</u>	20 <u>09</u>
<i>Bonnie Hester</i>	
OPERATIONS ENGINEER	
EXAMINED <u>Aug 27</u>	20 <u>09</u>
<i>Bonnie Hester</i>	
PROGRAM IMPLEMENTATION ENGINEER	
EXAMINED <u>August 27</u>	20 <u>09</u>
<i>ARMLI</i>	
PROGRAM DEVELOPMENT ENGINEER	

* D6 RUMBLESTRIP, MRKING 2010

FILE NAME =	USER NAME = bslj	DESIGNED -	REVISED -	STATE OF ILLINOIS DEPARTMENT OF TRANSPORTATION	GENERAL NOTES	F.A.U RTE.	SECTION	COUNTY	TOTAL SHEETS	SHEET NO.	
ct:\pwork\PMIDOT\BALJ\0157369\0672019	ent-genote.dgn	DRAWN -	REVISED -			658	.	SANGAMON	16	2	
	PLOT SCALE = 100.0000' / IN.	CHECKED -	REVISED -			CONTRACT NO. 72D19					
	PLOT DATE = Aug-28-2009 09:40:05AM	DATE -	REVISED -			ILLINOIS FED. AID PROJECT					
					SCALE:	SHEET NO. OF SHEETS STA. TO STA.					

0815 1 0 432

90% FED,
10% STATE

SANGAMON
COUNTY

PAY CODE	DESCRIPTION	UNIT	TOTAL	SFTY-1D
X0326697	CENTER LINE - RUMBLE STRIP - 8"	FOOT	16,888	16,888
X0326698	CENTER LINE - RUMBLE STRIP - 20"	FOOT	18,355	18,355
78001120	PAINT PAVEMENT MARKING - LINE 5"	FOOT	114,600	114,600
20100210	TREE REMOVAL (OVER 15 UNITS DIAMETER)	UNIT	23	23
67100100	MOBILIZATION	L SUM	1	1
70100460	TRAFFIC CONTROL AND PROTECTION, STANDARD 701306	L SUM	1	1
* 72400100	REMOVE SIGN PANEL ASSEMBLY - TYPE A	EACH	5	5
* 72400500	RELOCATE SIGN PANEL ASSEMBLY - TYPE A	EACH	1	1
78000300	THERMOPLASTIC PAVEMENT MARKING - LINE 5"	FOOT	7,529	7,529
78000400	THERMOPLASTIC PAVEMENT MARKING - LINE 6"	FOOT	224	224
78000500	THERMOPLASTIC PAVEMENT MARKING - LINE 8"	FOOT	138	138
78000600	THERMOPLASTIC PAVEMENT MARKING - LINE 12"	FOOT	290	290
78003100	PREFORMED PLASTIC PAVEMENT MARKING, TYPE B - LETTERS AND SYMBOLS	SQ FT	62.4	62.4
78003180	PREFORMED PLASTIC PAVEMENT MARKING, TYPE B - LINE 24"	FOOT	128	128
78300100	PAVEMENT MARKING REMOVAL	SQ FT	3,950	3,950

* Specialty Items

SECTION D6 RUMBLESTRIPS, MARKING 2010

FILE NAME =	USER NAME = laughlinr1	DESIGNED -	REVISED -	STATE OF ILLINOIS DEPARTMENT OF TRANSPORTATION	SUMMARY OF QUANTITIES				F.A.P. RTE.	SECTION	COUNTY	TOTAL SHEETS	SHEET NO.	
c:\pwwork\PW100T\LAUGHLINRL\d0157369	72019-shr-soq.dgn	DRAWN -	REVISED -		SCALE:	SHEET NO.	OF	SHEETS	STA.	TO STA.	658	SANGAMON	16	3
	PLOT SCALE = 100.0000' / IN.	CHECKED -	REVISED -		CONTRACT NO. 72019									
	PLOT DATE = Aug-29-2009 02:43:48PM	DATE -	REVISED -		ILLINOIS FED. AID PROJECT									

Paint Pavement Marking - Line 5"

Location	Sta.	Sta.	Pass (ft)	DBL NP (ft)	NBNP (ft)	SBNP (ft)
	492+61	487+06				555
	487+06	477+81		925		
Omission	477+81	466+90				Buckhorn / Est III turn lanes - Omission
	466+90	459+39		751		
	461+07	444+89			1618	
	444+89	443+32		157		
	443+32	433+55				977
	433+55	364+88	6867			
Sta Eq (Ah)	364+88					
Sta Eq (Bk)	364+95					
	364+95	363+31	164			
	363+31	355+18			813	
	355+18	344+59		1059		
	344+59	333+82				1077
	333+82	328+82		500		
Andrew Rd - Thermo	328+82	315+30				Thermo - see schedule
	315+30	310+30				500
	310+30	296+49	1381			
	296+49	286+04		1045		
	286+04	280+20				584
	280+20	265+96	1424			
	265+96	258+68			728	
	258+68	241+19		1749		
	241+19	233+04	815			
	233+04	222+96			1008	
	222+96	199+48		2348		
Sta. Eq (AH)	199+48					
Sta. Eq (BK)	202+89					
	202+89	193+66		923		
Sta. Eq (AH)	193+66					
Sta. Eq (BK)	115+24					
	115+24	80+00		3524		
	80+00	33+03	4697			
Sta Reverses	33+03					
Sta Reverses	+44					
	+44	17+92	1748			
	17+92	22+92			500	

Note: Add extra 2x quantity for edge lines

17096	12981	4667	3693
x2.25	x4	x3.25	x3.25
38466	51924	15168	12002

Note: No EOP markings between 492+61 to 477+81 (deduct 2960')

Total = 117,560
 -2960
 Final = 114,600

White = 73,914
 Yellow = 40,686

Center Line Rumble Strips

Location	Sta	to	Sta	8" Length (ft)	20" Length (ft)
	492+61		477+81		1480
Buckhorn/Est III Omission	477+81		466+90		
	466+90		433+55		3335
	433+55		364+88	6867	
Sta Eq (Ah)	364+88				
Sta Eq (Bk)	364+95				
	364+95		363+31	164	
	363+31		328+82		3449
Andrew Rd Omission	328+82		315+30		
	315+30		310+30		500
	310+30		296+49	1381	
	296+49		280+20		1629
	280+20		265+96	1424	
	265+96		241+19		2477
	241+19		233+04	815	
	233+04		199+48		3356
Sta Eq (Ah)	199+48				
Sta Eq (Bk)	202+89				
	202+89		193+66		923
Sta Eq (Ah)	193+66				
Sta Eq (Bk)	115+24				
	115+24		108+18		706
Contra II Omission	108+18		77+92		
	77+92		33+03	4489	
Sta Reverses	33+03				
Sta Reverses	+44				
	+44		17+92	1748	
	17+92		22+92		500
				1	18355

D6 RUMBLESTRIP, MRKING 2010 Rev

Thermoplastic and Preformed Plastic Pavement Marking

Sta	to	Sta	Thermoplastic				Preformed			
			5" White (ft)	5" Yellow (ft)	6" White (ft)	8" White (ft)	12" White (ft)	12" Yellow (ft)	Letter & Symbols (sq ft)	24" White (ft)
<u>IL 29</u>										
328+82		315+30	2414	4494	224			230	62.4	83
<u>Andrew Rd</u>										
100' East		100' West	427	194		138	60			45
			2841	4688	224	138	60	230	62.4	128

Pavement Marking Removal

Location	(sq ft)	(sq ft)	(sq ft)	(sq ft)	(sq ft)	(sq ft)	(sq ft)	(sq ft)
IL 29 and Andrew Rd	2841	4688	224	138	60	230		128
	x5/12	x5/12	x6/12	x8/12	x12/12	x12/12		x2
	1184	1953	112	92	60	230	62.4	256

Total = 5950 sq ft

Remove Sign Panel Assy A, Relocate Sign Panel Assy A

Location	Quantity	Location	Quantity
Remove	(EA)	Relocate	(EA)
108+18 - SBL	1		
203+87 - NBL	1		
207+33 - SBL	1		
295+00 - NBL	1	296+49 - NBL	1
336+19 - SBL	1		
	<u>5 total</u>		<u>1 total</u>

• D6 RUMBLESTRIP, MRKING 2010

FILE NAME =	USER NAME = laughlinc1	DESIGNED -	REVISED -
o:\pw_work\PM100\LAUGHLIN\LD157369\72019-shr-schedule.dgn		DRAWN -	REVISED -
PLOT SCALE = 100.0000' / IN.		CHECKED -	REVISED -
PLOT DATE = Aug-28-2009 02:47:31PM		DATE -	REVISED -

STATE OF ILLINOIS
DEPARTMENT OF TRANSPORTATION

SCHEDULES

SCALE:	SHEET NO.	OF	SHEETS	STA.	TO STA.

F.A.U. RTE.	SECTION	COUNTY	TOTAL SHEETS	SHEET NO.
658		SANGAMON	16	5
CONTRACT NO. 72D19				
ILLINOIS FED. AID PROJECT				



EXIST. CURVE 200
 PI STA. = 26+00.37
 $\Delta = 90^\circ 13' 10''$ (LT)
 D = 2° 14' 59"
 R = 2,546.87'
 T = 2,556.64'
 L = 4,010.37'
 E = 1,061.87'
 e = -----
 T.R. = -----
 S.E. RUN = -----
 P.C. STA. = 0+43.73
 P.T. STA. = 40+54.10



PC Sta 0+43.73 AH=
 POT STA 33+03.33 AH
 13+00
 14+00
 PI Sta 40+84.36
 MATCHLINE STA. 42+00

• D6 RUMBLESTRIP, MRKING 2010

FILE NAME =	USER NAME = laughlinr	DESIGNED -	REVISED -
c:\pw\work\PW1007\LAUGHLINR\157369\	72019-ah-1-linediagram.dgn	DRAWN -	REVISED -
	PLOT SCALE = 400.0000' / 1IN.	CHECKED -	REVISED -
	PLOT DATE = Aug-28-2009 02:47:33PM	DATE -	REVISED -

**STATE OF ILLINOIS
 DEPARTMENT OF TRANSPORTATION**

LINE DIAGRAM				
SCALE:	SHEET NO.	OF SHEETS	STA.	TO STA.

F.A.P. RTE.	SECTION	COUNTY	TOTAL SHEETS	SHEET NO.
658	*	SANGAMON	16	6
CONTRACT NO. 72019			ILLINOIS FED. AID PROJECT	



MATCHLINE STA. 42+00

145+00 150+00 155+00 160+00 165+00 170+00 175+00

PI Sta 74+65.40

80+00 85+00 90+00 95+00 100+00
 91+81 97+60 101+25

MATCHLINE STA. 103+00

EXTEND NB & SB NP ZONE TO STA 80+00

SB NP ZONE (TYP)

NB NP ZONE (TYP)

NOTE: NO CENTERLINE RUBLE STRIPS FROM STA 77+92 TO STA 108+18

CLAYPOOL / BARBER RD.
STA 87+92.37 MP 2.58

HOLLAND ST.
STA 92+34.41 MP 2.26

IL MIDLAND RR
STA 97+60.00 (approx) MP 2.76

CANTERBERRY ST.
STA 97+83.61 MP 2.77

CANTRAL ST.
STA 101+24.53 MP 2.83

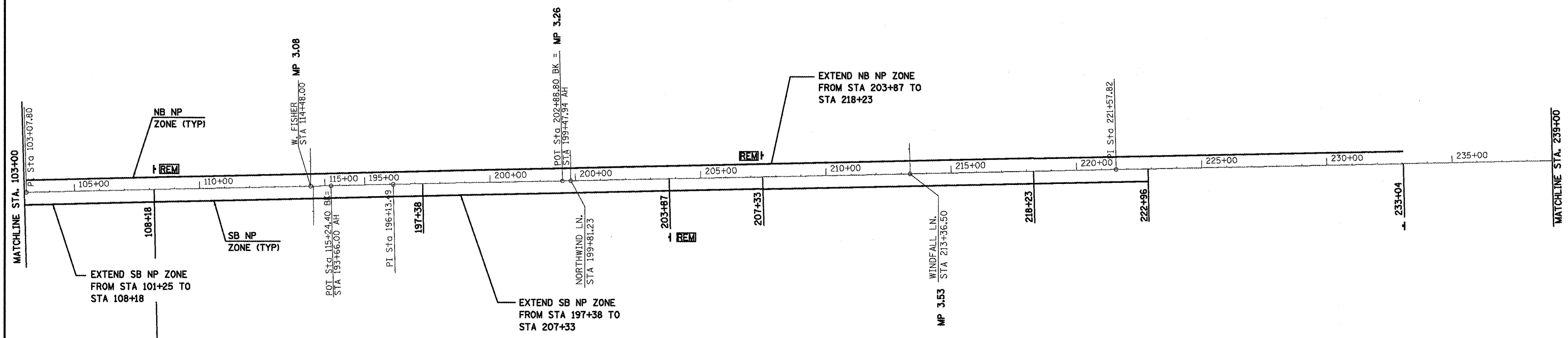
FILE NAME =	USER NAME = leughlrr1	DESIGNED -	REVISED -
er\pwr\work\FWIDOT\LAUGHLINRL\08157369\072019\shv-linediagram.dgn		DRAWN -	REVISED -
PLOT SCALE = 400.0000 ' / 1".		CHECKED -	REVISED -
PLOT DATE = Aug-28-2009 02:47:35PM		DATE -	REVISED -

**STATE OF ILLINOIS
DEPARTMENT OF TRANSPORTATION**

LINE DIAGRAM				
SCALE:	SHEET NO.	OF SHEETS	STA.	TO STA.

F.A.P. RTE.	SECTION	COUNTY	TOTAL SHEETS	SHEET NO.
658		SANGAMON	16	7
CONTRACT NO. 72D19				
ILLINOIS FED. AID PROJECT				

• D6 RUMBLESTRIP, MRKING 2010



NOTE: NO CENTERLINE RUMBLE STRIPS FROM STA 77+92 TO THE NCL OF CANTRALL (STA 108+18)

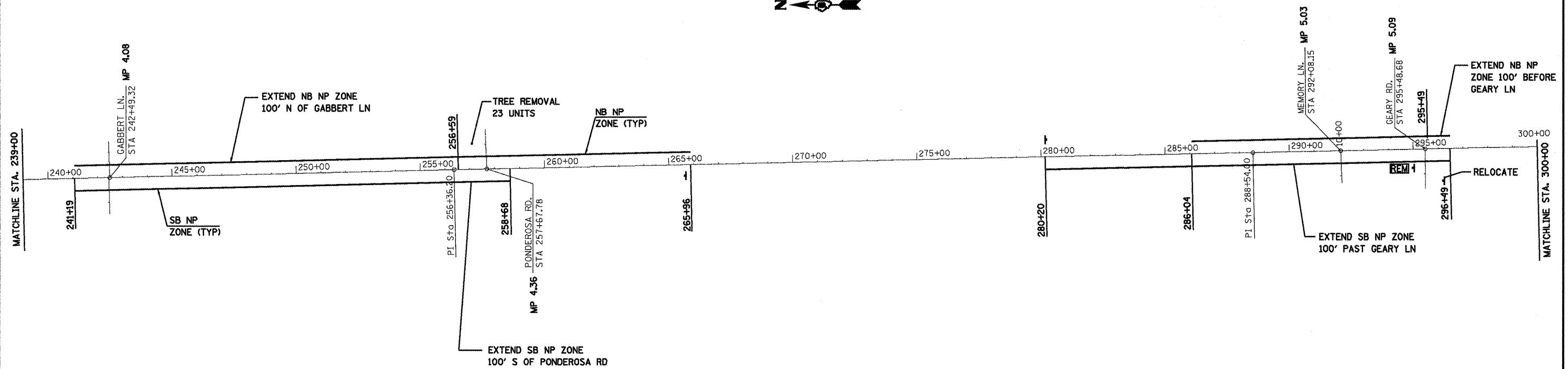
• D6 RUMBLESTRIP, MRKING 2010

FILE NAME =	USER NAME = laughlira1	DESIGNED -	REVISED -
e:\pwork\PWIDOT\LAUHLIN\RL\015182\72019-shk-linediagram.dgn		DRAWN -	REVISED -
		CHECKED -	REVISED -
		DATE -	REVISED -

**STATE OF ILLINOIS
DEPARTMENT OF TRANSPORTATION**

LINE DIAGRAM				
SCALE:	SHEET NO.	OF	SHEETS	STA. TO STA.

F.A.P. RTE.	SECTION	COUNTY	TOTAL SHEETS	SHEET NO.
658		SANGAMON	16	8
CONTRACT NO. 72019				
ILLINOIS FED. AID PROJECT				



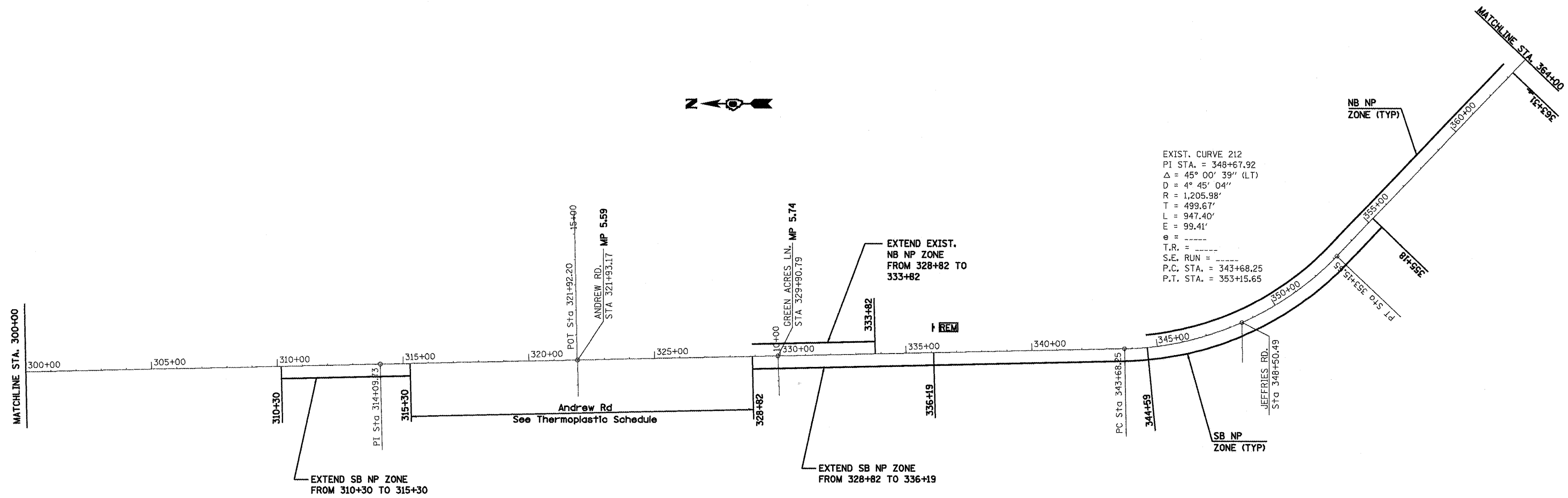
FILE NAME =	USER NAME = laughlinr	DESIGNED -	REVISED -
et\pwork\PW100T\LAUGHLINRL\0157369\072019-shr-linediagram.dgn		DRAWN -	REVISED -
PLOT SCALE = 400.0000' / IN.		CHECKED -	REVISED -
PLOT DATE = Aug-28-2009 02:47:39PM		DATE -	REVISED -

**STATE OF ILLINOIS
DEPARTMENT OF TRANSPORTATION**

LINE DIAGRAM			
SCALE:	SHEET NO.	OF SHEETS	STA. TO STA.

F.A.P. RTE.	SECTION	COUNTY	TOTAL SHEETS	SHEET NO.
658		SANGAMON	16	9
CONTRACT NO. 72019				
ILLINOIS FED. AID PROJECT				

• D6 RUMBLESTRIP, WRKING 2010



• D6 RUMBLESTRIP, MRKING 2010

FILE NAME =	USER NAME = laughlinr1	DESIGNED -	REVISED -
c:\pvc\work\p1007\LAUGHLINRL\0157369\	72019-shv-linediagram.dgn	DRAWN -	REVISED -
	PLOT SCALE = 400.0000' / IN.	CHECKED -	REVISED -
	PLOT DATE = Aug-28-2009 02:47:41PM	DATE -	REVISED -

STATE OF ILLINOIS
 DEPARTMENT OF TRANSPORTATION

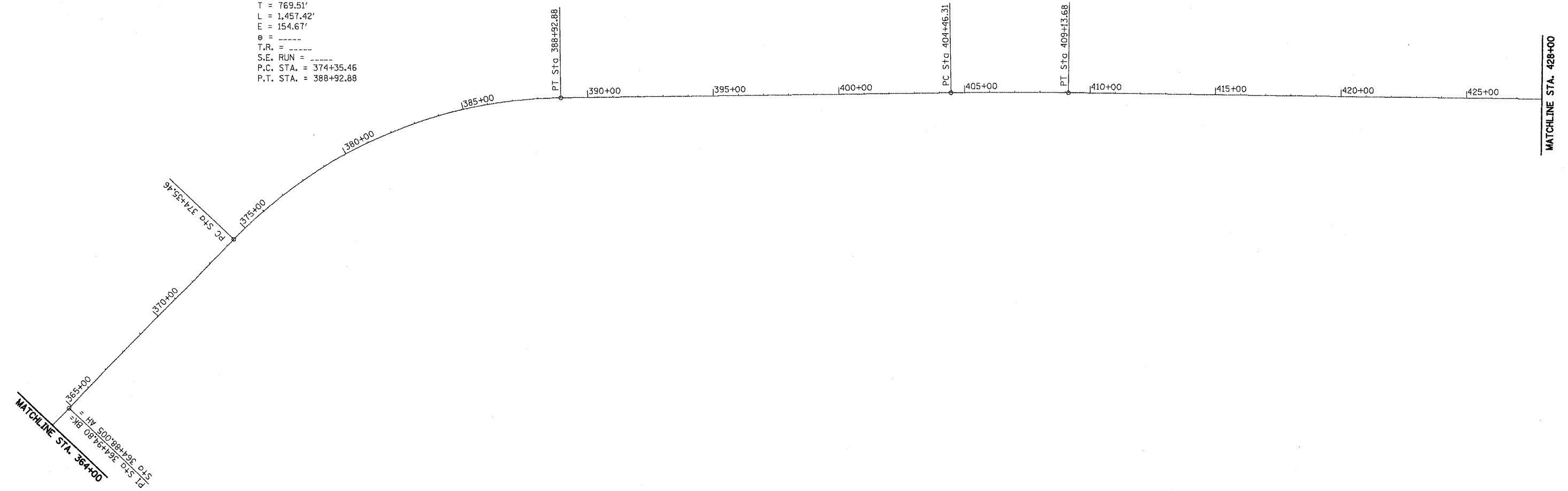
LINE DIAGRAM

F.A.P. RTE. 658	SECTION	COUNTY	TOTAL SHEETS	SHEET NO.
		SANGAMON	16	10
SCALE:	SHEET NO.	OF SHEETS	STA.	TO STA.

CONTRACT NO. 72D19	
ILLINOIS FED. AID PROJECT	

EXIST. CURVE TA201
 PI STA. = 382+04.97
 $\Delta = 45^\circ 27' 33''$ (RT)
 D = $3^\circ 07' 09''$
 R = 1,836.91'
 T = 769.51'
 L = 1,457.42'
 E = 154.67'
 $\theta =$ -----
 T.R. = -----
 S.E. RUN = -----
 P.C. STA. = 374+35.46
 P.T. STA. = 388+92.88

EXIST. CURVE TA202
 PI STA. = 406+80.01
 $\Delta = 1^\circ 29' 36''$ (RT)
 D = $0^\circ 19' 10''$
 R = 17,930.50'
 T = 233.70'
 L = 467.37'
 E = 1.52'
 $\theta =$ -----
 T.R. = -----
 S.E. RUN = -----
 P.C. STA. = 404+46.31
 P.T. STA. = 409+13.68



MATCHLINE STA. 364+00
 = AH 500+88.00 BK= 364+88.00 AH =
 PI STA. 364+88.00

• D6 RUMBLESTRIP, MRKING 2010

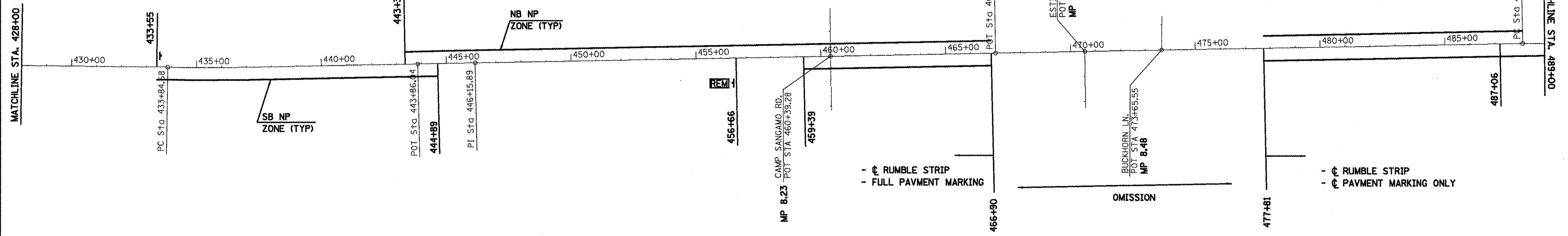
FILE NAME =	USER NAME = laughlrr1	DESIGNED -	REVISED -
ca:\pv\work\PWIDOT\LAUGHLINRL\d0157369\	72D19-shr-linediagram.dgn	DRAWN -	REVISED -
	PLOT SCALE = 400.0000' / 1IN.	CHECKED -	REVISED -
	PLOT DATE = Aug-28-2009 02:47:43PM	DATE -	REVISED -

**STATE OF ILLINOIS
 DEPARTMENT OF TRANSPORTATION**

LINE DIAGRAM				
SCALE:	SHEET NO.	OF	SHEETS	STA. TO STA.

F.A.P. RTE.	SECTION	COUNTY	TOTAL SHEETS	SHEET NO.
658	•	SANGAMON	16	11
CONTRACT NO. 72D19				
ILLINOIS FED. AID PROJECT				

EXIST. CURVE TA203
 PI STA. = 435+69.65
 $\Delta = 1^{\circ} 50' 07''$ (LT)
 $D = 0^{\circ} 29' 46''$
 $R = 11,548.22'$
 $T = 184.97'$
 $L = 369.91'$
 $E = 1.48'$
 $\theta = \text{-----}$
 T.P. = -----
 S.E. RUN = -----
 P.C. STA. = 433+84.68
 P.T. STA. = 437+54.60



• D6 RUMBLESTRIP, MRKING 2010

FILE NAME =	USER NAME = laughlir-1	DESIGNED -	REVISED -
er\pv_work\PWIDOT\LAUGHLINRL\20157369\72D19-shs-linediagram.dgn		DRAWN -	REVISED -
PLOT SCALE = 400.0000' / 1"		CHECKED -	REVISED -
PLOT DATE = Aug-28-2009 02:47:45PM		DATE -	REVISED -

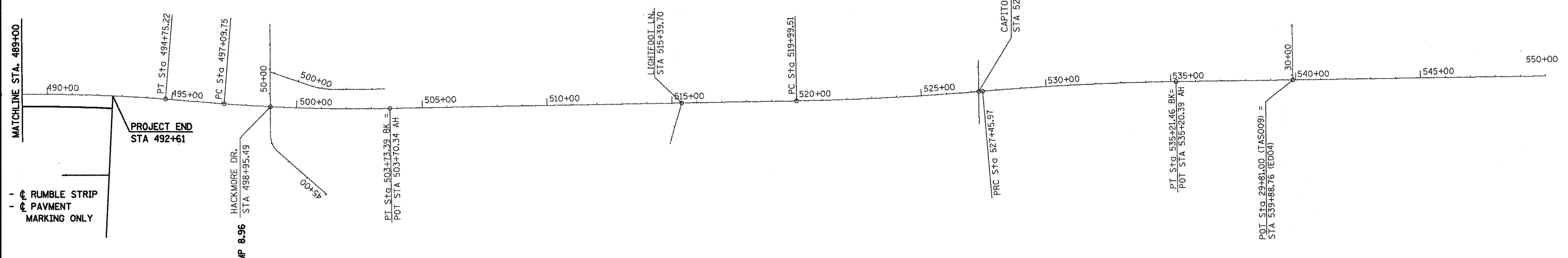
**STATE OF ILLINOIS
 DEPARTMENT OF TRANSPORTATION**

LINE DIAGRAM				
SCALE:	SHEET NO.	OF	SHEETS	STA. TO STA.

F.A.P. RTE.	SECTION	COUNTY	TOTAL SHEETS	SHEET NO.
658	•	SANGAMON	16	12
CONTRACT NO. 72D19				
ILLINOIS FED. AID PROJECT				

EXIST. CURVE 206
 PI STA. = 491+43.99
 $\Delta = 5^\circ 36' 41''$ (RT)
 $D = 0^\circ 50' 47''$
 $R = 6,769.50'$
 $T = 331.76'$
 $L = 663.00'$
 $E = 8.12'$
 $e =$ -----
 $T.R. =$ -----
 $S.E. RUN =$ -----
 $P.C. STA. = 488+12.23$
 $P.T. STA. = 494+75.22$

EXIST. CURVE 209
 PI STA. = 531+33.87
 $\Delta = 3^\circ 59' 12''$ (RT)
 $D = 0^\circ 30' 51''$
 $R = 11,145.20'$
 $T = 387.90'$
 $L = 775.49'$
 $E = 6.75'$
 $e =$ -----
 $T.R. =$ -----
 $S.E. RUN =$ -----
 $P.C. STA. = 527+45.97$
 $P.T. STA. = 535+21.46$



- RUMBLE STRIP
 - PAYMENT MARKING ONLY

• D6 RUMBLESTRIP, MRKING 2010

FILE NAME =	USER NAME = leughlrv1	DESIGNED -	REVISED -
et\pwork\PI\DOT\LAUGHLIN\LA0157369\72019-shr-linediagram.dgn		DRAWN -	REVISED -
PLOT SCALE = 400.0000 ' / IN.		CHECKED -	REVISED -
PLOT DATE = Aug-28-2009 02:47:48PM		DATE -	REVISED -

**STATE OF ILLINOIS
 DEPARTMENT OF TRANSPORTATION**

LINE DIAGRAM				
SCALE:	SHEET NO.	OF SHEETS	STA.	TO STA.

F.A.P. RTE.	SECTION	COUNTY	TOTAL SHEETS	SHEET NO.
658		SANGAMON	16	13
CONTRACT NO. 72019				
ILLINOIS FED. AID PROJECT				

307+47.95

310+00

313+47.95

- THERMOPLASTIC**
- (A) EX & PR PAVEMENT MARKING - LINE - 5" WHITE (SOLID)
 - (B) EX & PR PAVEMENT MARKING - LINE - 5" DOUBLE YELLOW (SOLID)
 - (C) EX & PR PAVEMENT MARKING - LINE - 6" WHITE (SOLID)
 - (D) EX & PR PAVEMENT MARKING - LINE - 8" WHITE (SOLID)
 - (E) EX & PR PAVEMENT MARKING - LINE - 12" WHITE (SOLID)
- PREFORMED PLASTIC**
- (F) EX PAVEMENT MARKING TY B INLAID - LETTERS & SYMBOLS - WHITE (SOLID)
(PR THERMOPLASTIC)
 - (G) EX PAVEMENT MARKING TY B INLAID - LINE - 24" WHITE (SOLID)
(PR THERMOPLASTIC)



BEGIN THERMOPLASTIC PAVEMENT MARKING

313+47.95

315+00

319+47.95

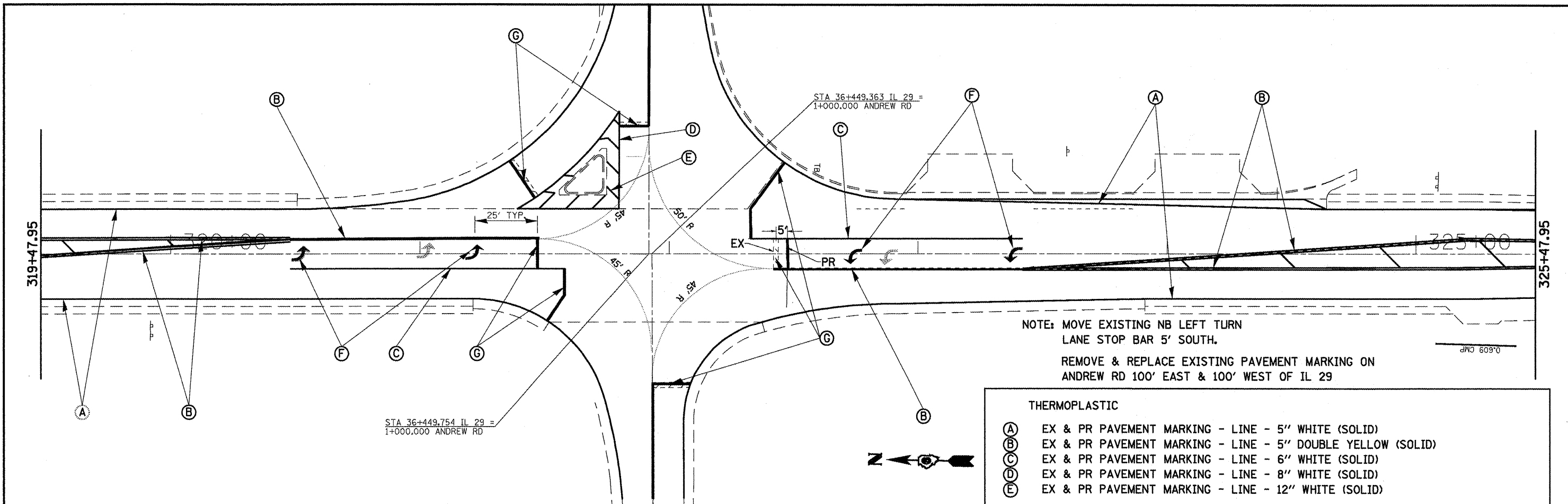
(A)

(B)

FILE NAME = e:\pwork\pwidot\LAUGHLIN\l\0157369\072019-shs-IntPaveMark.dgn	USER NAME = laughlin1	DESIGNED -	REVISED -	STATE OF ILLINOIS DEPARTMENT OF TRANSPORTATION	PAVEMENT MARKING PLAN			F.A.P. RTE.	SECTION	COUNTY	TOTAL SHEETS	SHEET NO.
	PLLOT SCALE = 48.0000' / IN.	CHECKED -	REVISED -					658	•	SANGAMON	16	14
PLLOT DATE = Aug-28-2009 02:47:50PM	DATE -	REVISED -	REVISED -	SCALE:	SHEET NO.	OF	SHEETS	STA.	TO STA.	ILLINOIS FED. AID PROJECT		

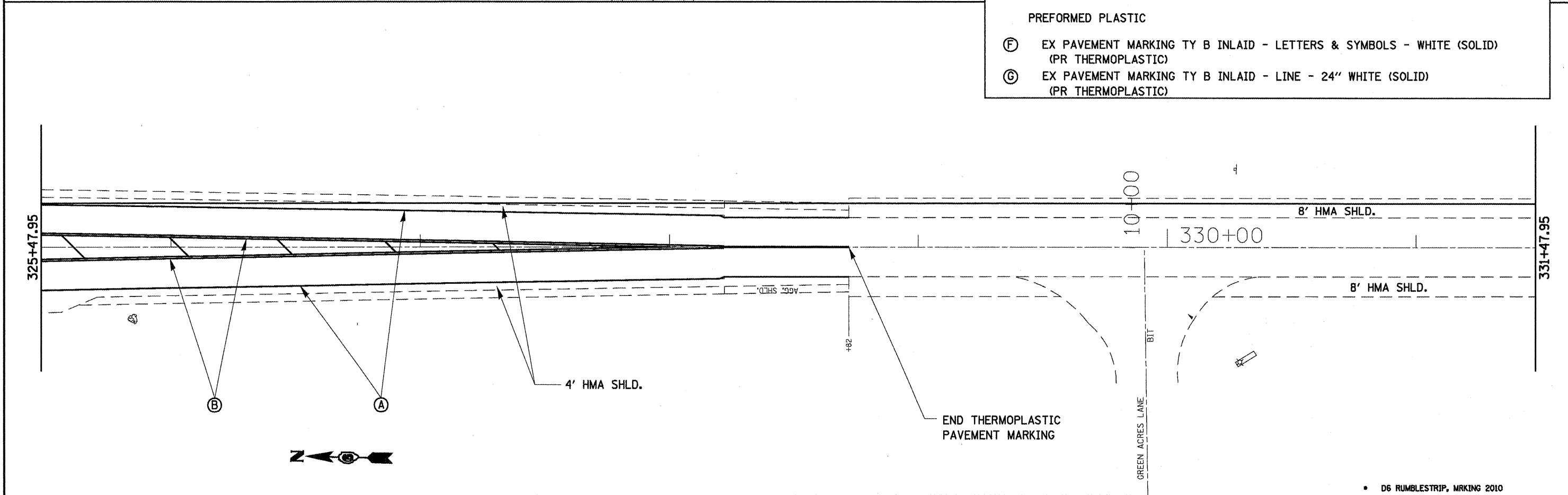
• D6 RUMBLESTRIP, MRKING 2010

CONTRACT NO. 72D19



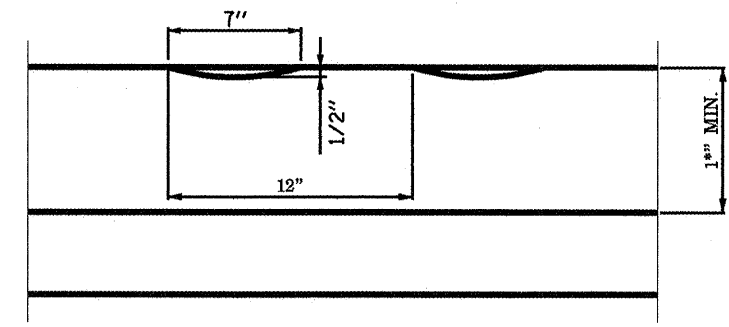
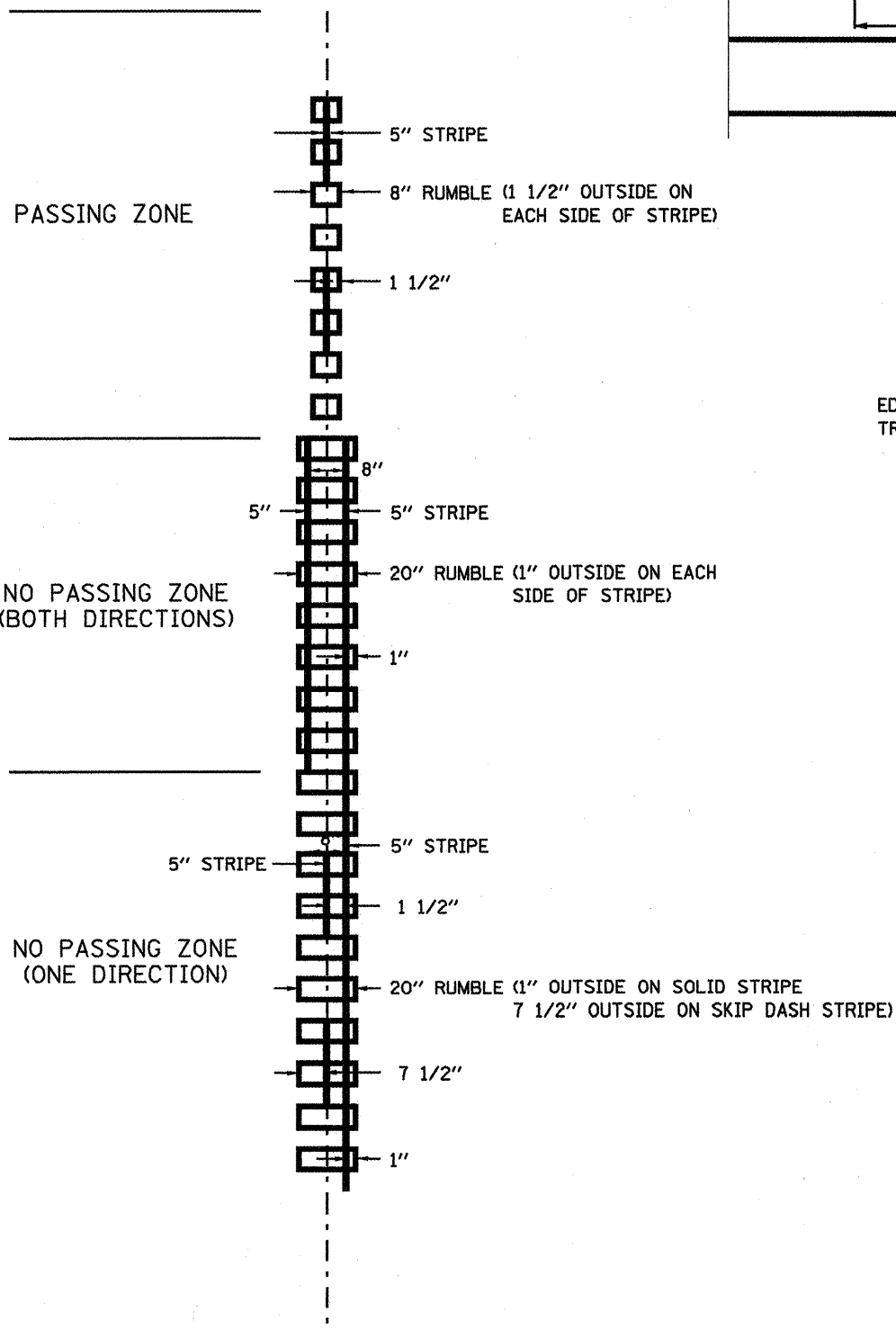
NOTE: MOVE EXISTING NB LEFT TURN LANE STOP BAR 5' SOUTH.
 REMOVE & REPLACE EXISTING PAVEMENT MARKING ON ANDREW RD 100' EAST & 100' WEST OF IL 29

- THERMOPLASTIC**
- (A) EX & PR PAVEMENT MARKING - LINE - 5" WHITE (SOLID)
 - (B) EX & PR PAVEMENT MARKING - LINE - 5" DOUBLE YELLOW (SOLID)
 - (C) EX & PR PAVEMENT MARKING - LINE - 6" WHITE (SOLID)
 - (D) EX & PR PAVEMENT MARKING - LINE - 8" WHITE (SOLID)
 - (E) EX & PR PAVEMENT MARKING - LINE - 12" WHITE (SOLID)
- PREFORMED PLASTIC**
- (F) EX PAVEMENT MARKING TY B INLAID - LETTERS & SYMBOLS - WHITE (SOLID) (PR THERMOPLASTIC)
 - (G) EX PAVEMENT MARKING TY B INLAID - LINE - 24" WHITE (SOLID) (PR THERMOPLASTIC)

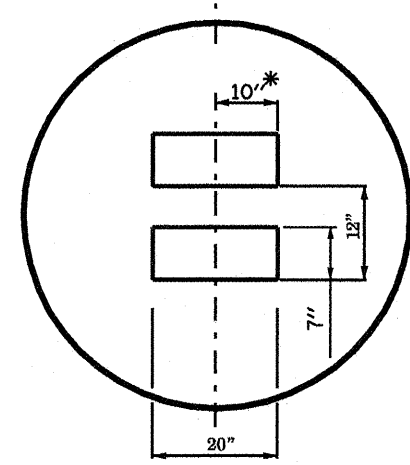


FILE NAME =	USER NAME = leughlrv1	DESIGNED -	REVISED -	STATE OF ILLINOIS DEPARTMENT OF TRANSPORTATION	PAVEMENT MARKING PLAN	F.A.P. RTE. 658	SECTION	COUNTY	TOTAL SHEETS	SHEET NO.
et\pvc\work\PWIDOT\LAUGHLINRL\0157369\072019-shrt-IntPaveMark.dgn	DRAWN -	REVISED -	658				SANGAMON	16	15	
PLOT SCALE = 40,0000' / IN.	CHECKED -	REVISED -	CONTRACT NO. 72019							
PLOT DATE = Aug-28-2009 02:47:53PM	DATE -	REVISED -	ILLINOIS FED. AID PROJECT							
					SCALE:	SHEET NO.	OF	SHEETS	STA.	TO STA.

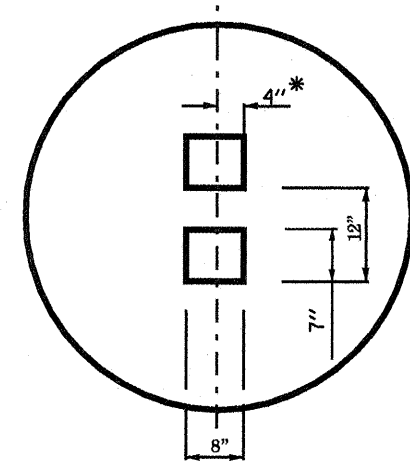
SKIP-DASH
PAVEMENT MARKING



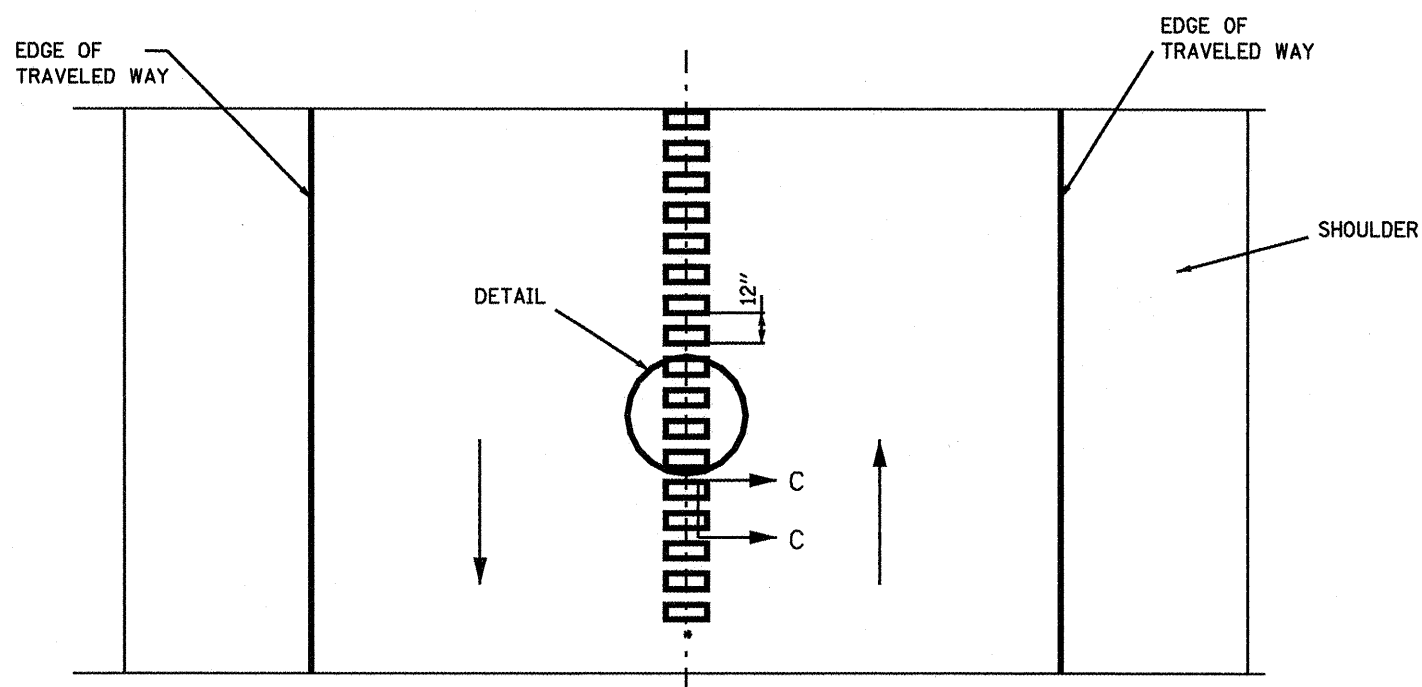
SECTION C-C



DETAIL
12" WIDE
NP ZONES



DETAIL
8" WIDE
PASS ZONES



TWO-WAY ROAD

* = LATERAL DEVIATION SHALL NOT EXCEED ONE INCH IN 100 FEET.

GENERAL NOTES:

- SKIP OVER EXISTING (4' GAP, 2' ON EACH SIDE) RAISED REFLECTIVE PAVEMENT MARKERS
- RUMBLE STRIPS SHALL NOT BE PLACED ON BRIDGES.
- ALL RUMBLE STRIPS SHALL BE MILLED.
- CENTERLINE RUMBLE STRIPS SHALL NOT BE CONTINUOUS THROUGH CONNECTIONS OF SIDEROADS WITH NO LEFT TURN LANES.
- DISCONTINUE CENTERLINE RUMBLE STRIPS THROUGH THE LIMITS OF ALL LEFT TURN LANES, INCLUDING ANY LANE TAPER SECTIONS.

FILE NAME =	USER NAME = laughlinr1	DESIGNED -	REVISED -
6:\pwork\p\1001\LAUGHLINRL\0157369\72019-ahtr-details.dgn		DRAWN -	REVISED -
PLOT SCALE = 200.0000' / IN.		CHECKED -	REVISED -
PLOT DATE = Aug-28-2009 02:47:55PM		DATE -	REVISED -

STATE OF ILLINOIS
DEPARTMENT OF TRANSPORTATION

RUMBLE STRIPS CENTERLINE DETAIL			
SCALE:	SHEET NO.	OF SHEETS	STA. TO STA.

F.A.P. RTE.	SECTION	COUNTY	TOTAL SHEETS	SHEET NO.
658			16	16
CONTRACT NO. 72019				
ILLINOIS FED. AID PROJECT				